

Euri Lighting Product Introduction

Euri Lighting's Premium Edge-Lit Panel



DLC Premium- 5 Year Warranty



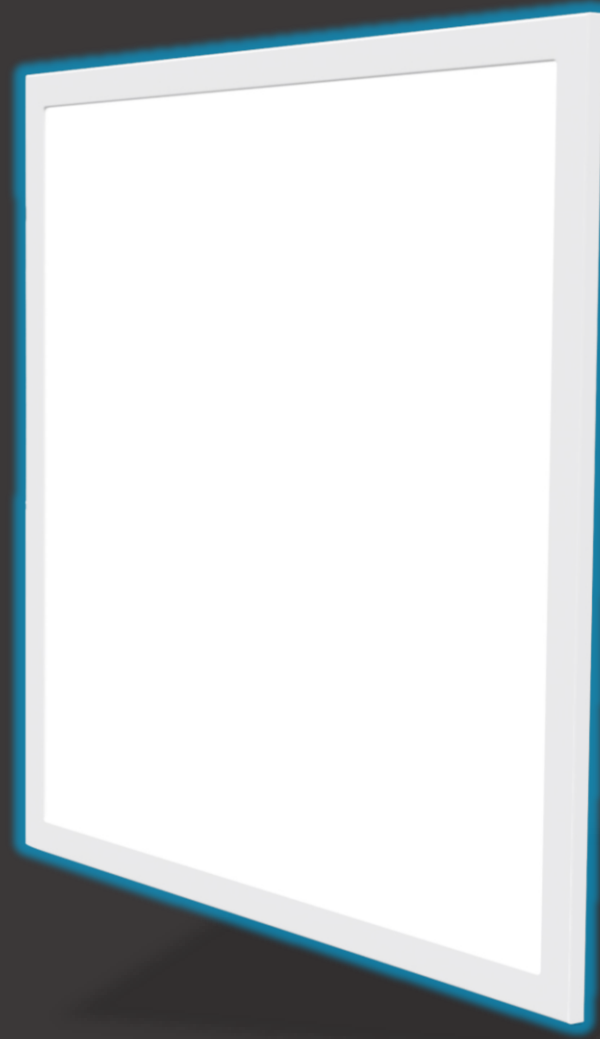
Seamless Frame



Robust and Dust-Proof Backplate



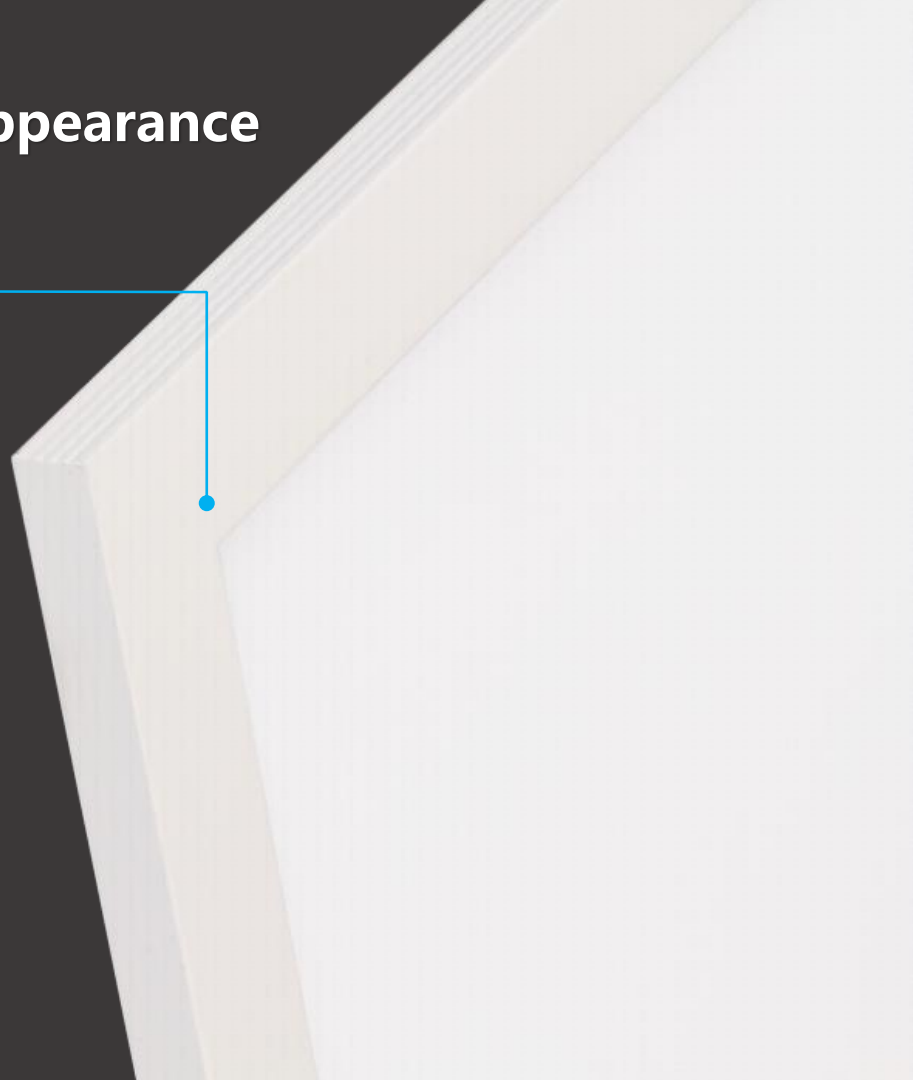
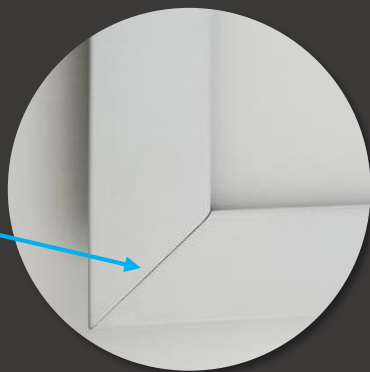
PMMA LGP Material



Seamless Frame for Premium Appearance

Features double-sided welding for seamless frame construction

Most common frame style has a seam due to single-sided welding

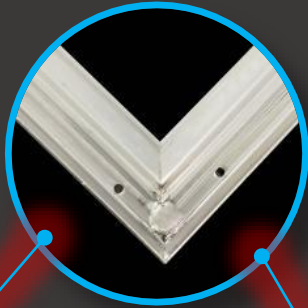


Euri

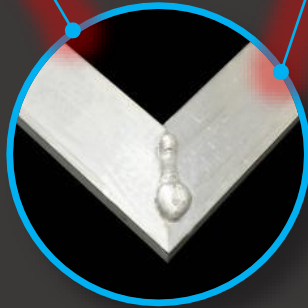
Double-sided Welding for a Premium and Seamless Frame



Robotic Welding Arm



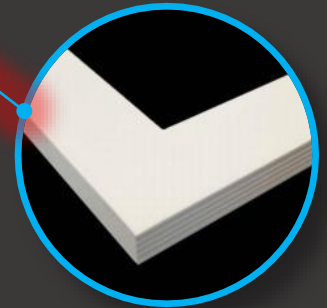
Inside Welding



Surface Welding



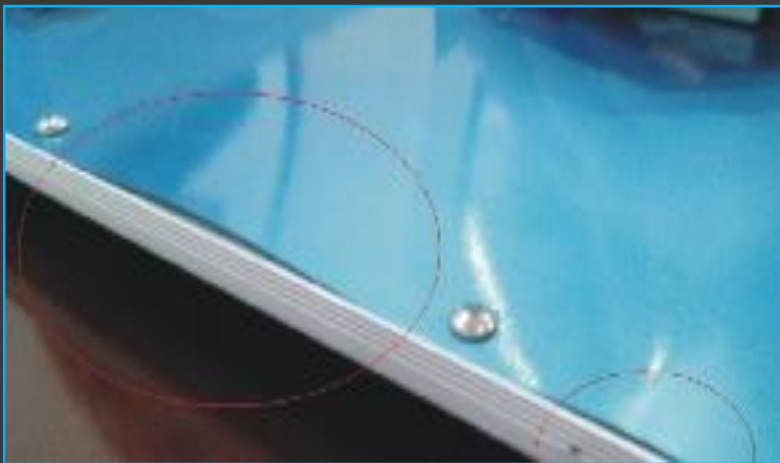
Polishing



Powder Coating

Euvi

Many LED Panel Backplates Suffer From Poor Construction



Bulges cause light-leakage and allow dust to penetrate the panel.



Inferior panels bulge easily due to cheap construction.

Euri Lighting Backplate



- Robust Design
- Dust Proof
- Insect Proof
- Deformation Resistant

Concave-Convex Folded Backplate

Euri

PMMA LGP Ensures Our Panel Will **Never** Yellow

Euri PMMA



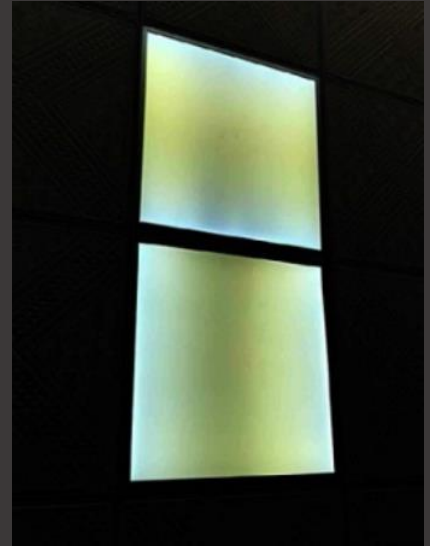
Cheap panels using PS material can yellow in as little as 8 months

VS.

UV exposure yellows the LGP. Protect your customers and insist on PMMA LGP only!

PMMA also offers much better light transmission than PS!

Others PS

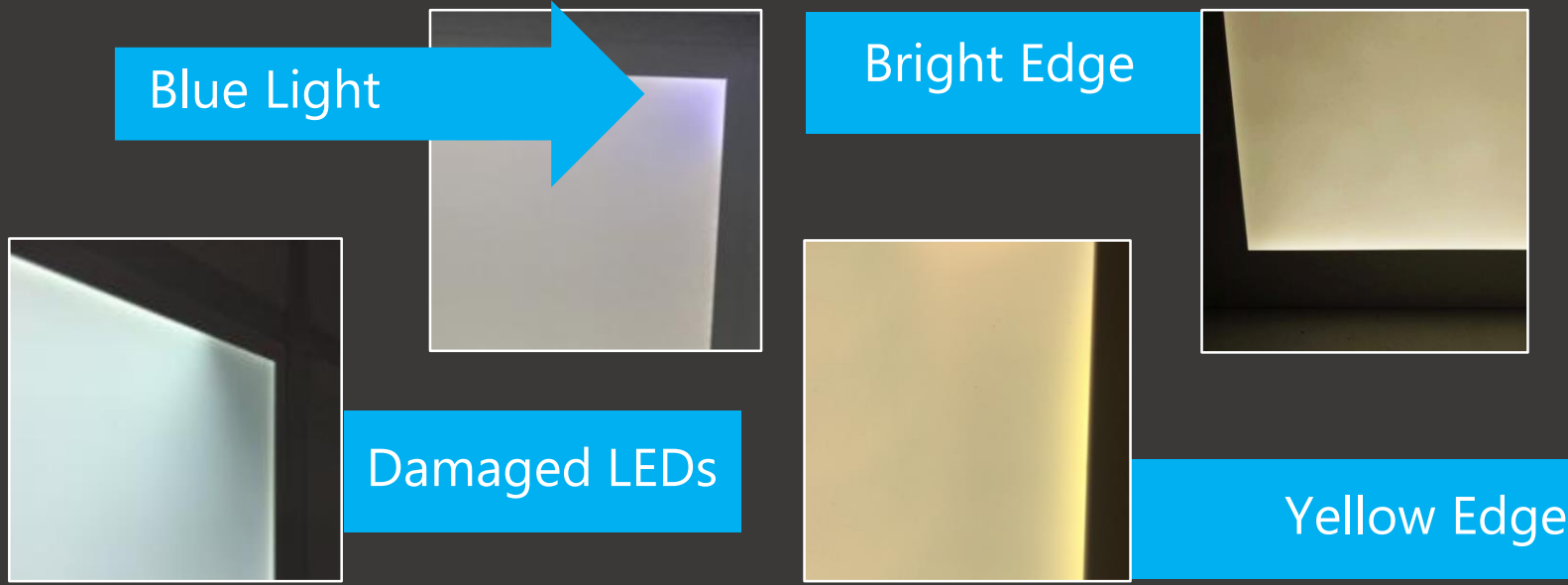


Euri

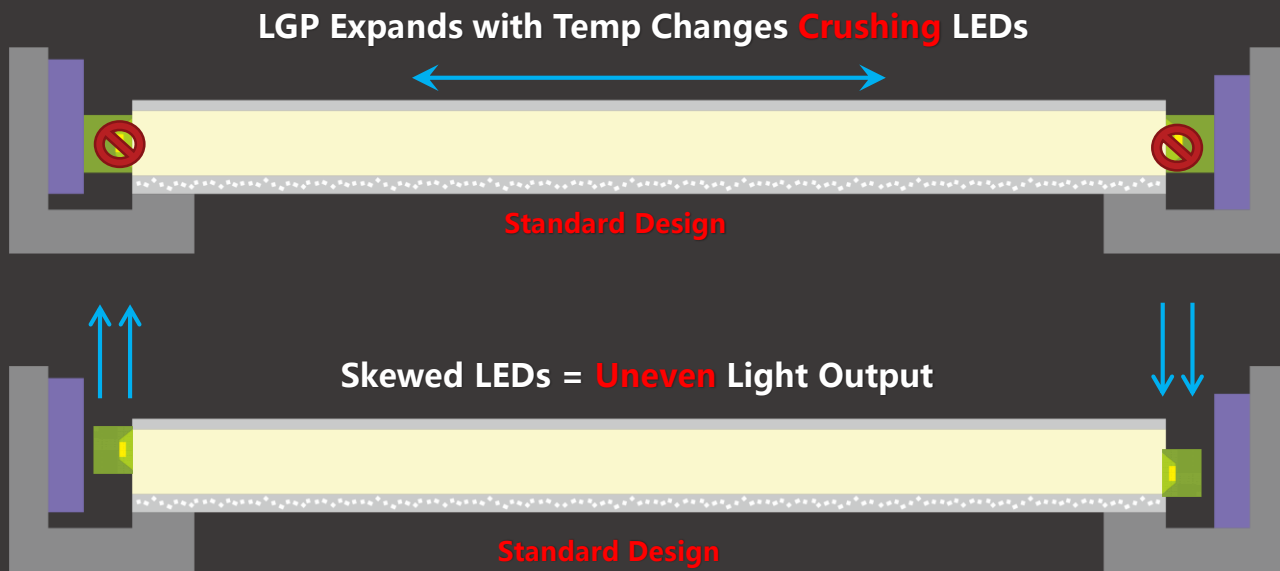
Panels Can be Internally Damaged During Shipping or Storage



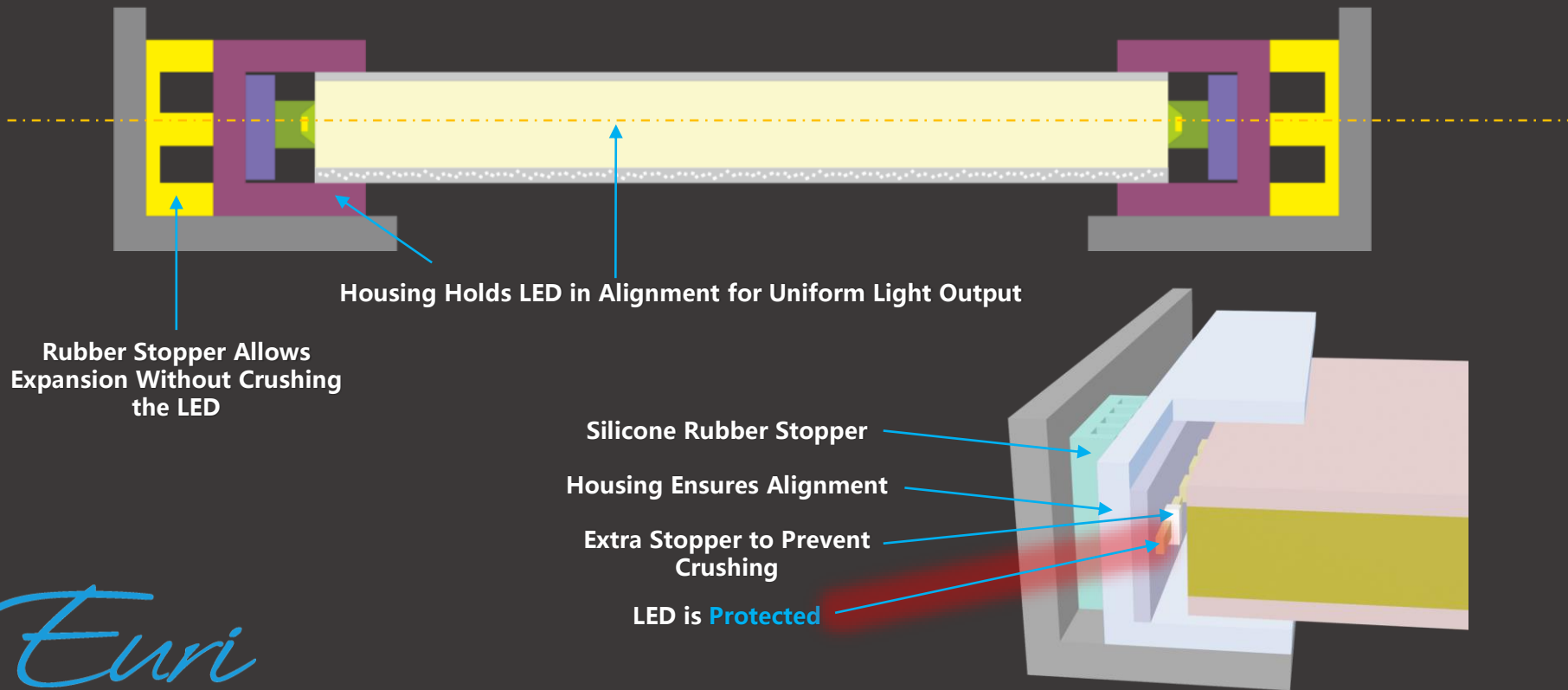
Common Damage Suffered By Inferior LED Panels – Inferior Construction Leads to Damaged LEDs



The **Problem?** Standard Panel Design Does not Protect the LEDs

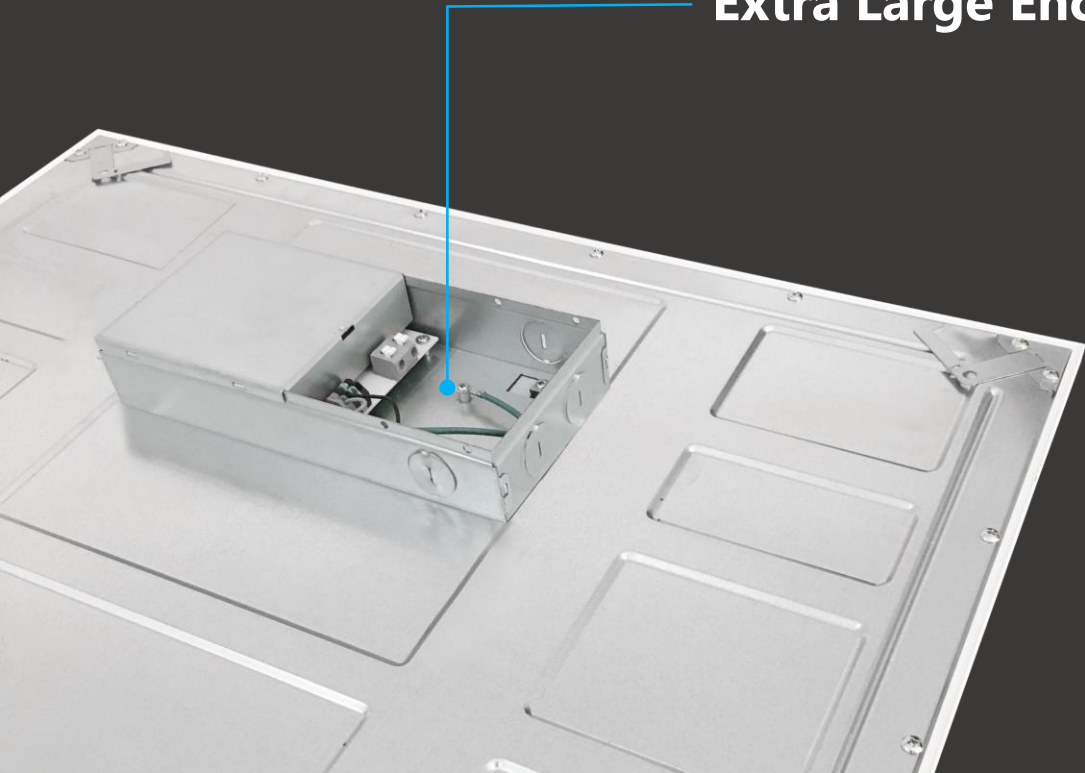


The **Solution**? Our Internal Locking Mechanism Prevents Damage



LED Driver – Designed Specifically for Euri Lighting Premium Edge-Lit Panel

Extra Large Enclosure for Ease of Wiring



1. UL/FCC Standard
2. High input voltage
3. Stable operation from AC 90V-305V
4. Flicker Free
5. EMI Protection
6. Large heat sink
7. Dual Capacitor

Euri