

INSTALLATION INSTRUCTION
500 Series LED Quick Connect™ Socket Set
 QP-LED503, MP-LED503

WAC LIGHTING
 Responsible Lighting®

OVERVIEW:

Socket Set 503LED is designed for use with WAC. MP-LED05M and all WAC quick connector.

Model MP-LED503 is same with Socket Set and

Model QP-LED503 is similar with Socket Set except for provided with a quick connector.

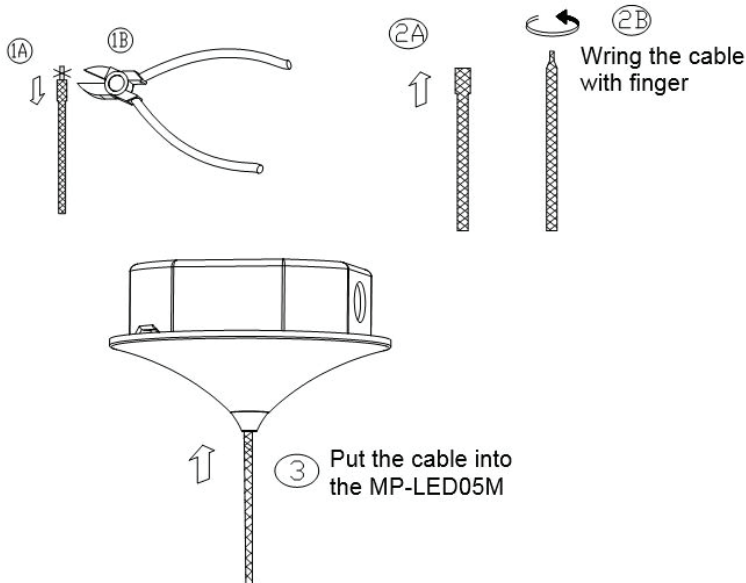
Model MP-LED503 is designed for use with WAC power unit MP-LED05M, model QP-LED503 is designed for use with WAC the track system (LM, HM1, LM2, JT, LT, HT) by quick connect adapters.

INSTALLING SHADE:

1. Position Socket Set 503LED so that threads through the hole in the shade and screw on Ring from below by finger or Ring Tool. (See diagram).

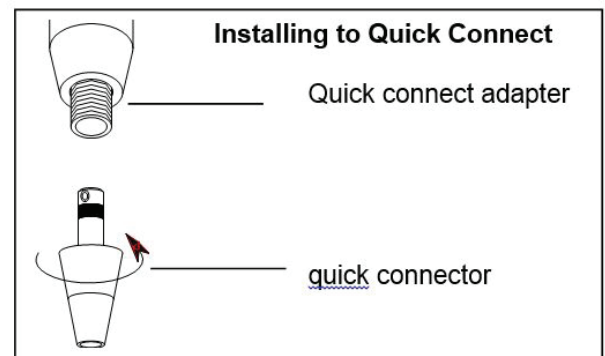
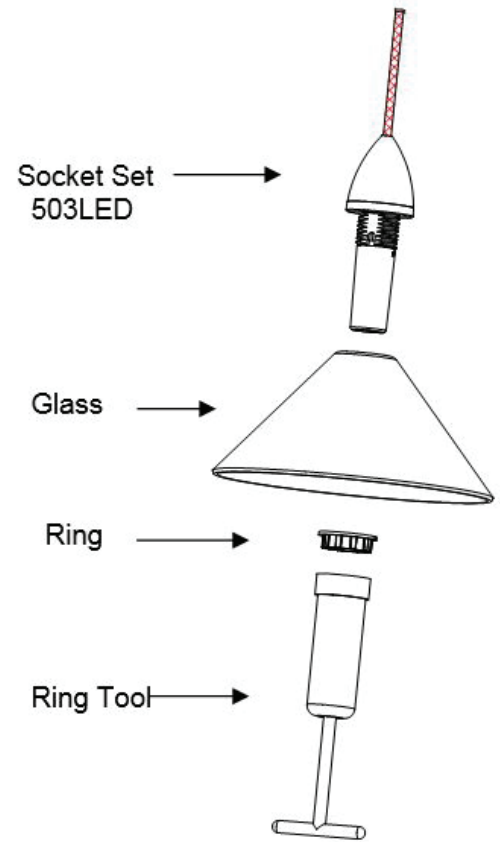
For model MP-LED503:

1. Put the knitted cable from the Socket Set into the cable grip (according to the step 1, 2, 3, shown with picture below)



FOR MODEL QP-LED503:

1. Insert the post of the quick connect into the quick connect adapter.
2. Thread the top half of the conical section until it seats with the adapter.
3. Adjust fixture position, use caution not to loosen the conical section

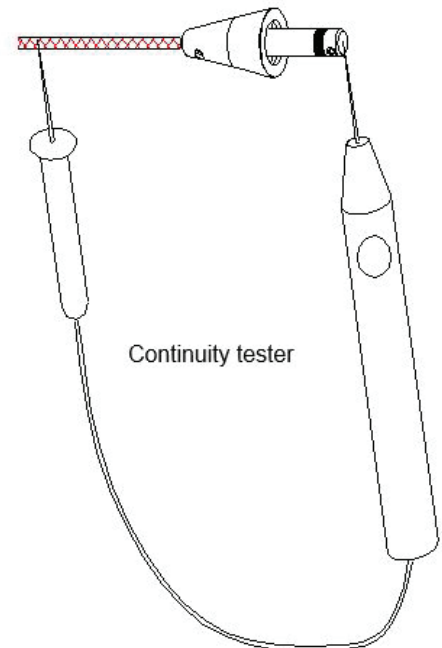
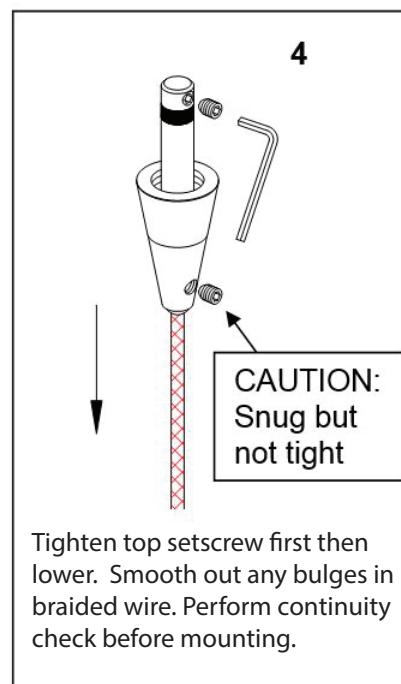
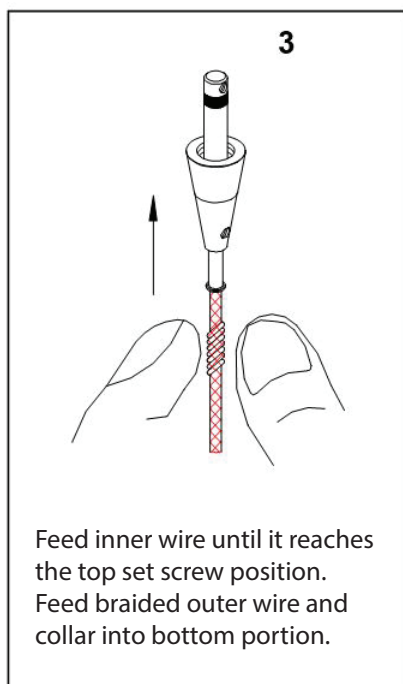
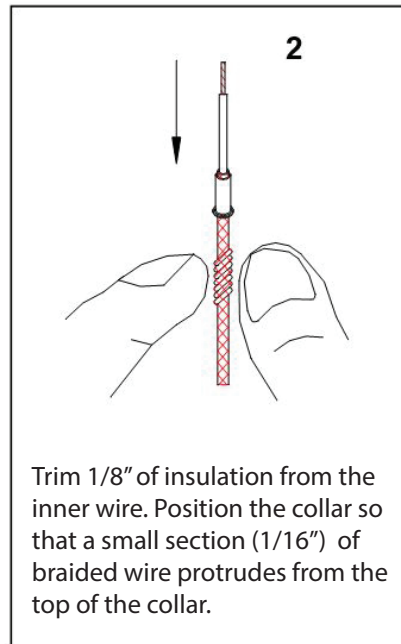
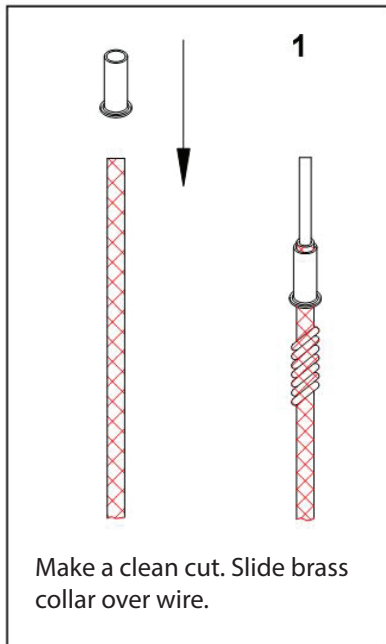


INSTALLATION INSTRUCTION
500 Series LED Quick Connect™ Socket Set
QP-LED503, MP-LED503

WAC LIGHTING
Responsible Lighting®

TO INSTALL / SHORTEN THE CABLE:

Feed the cable end through the Top Conical section and the metal finial. If cable needs to be shortened, make the cut now. To install the top conical section, follow the step-by-step instructions bellow. **NOTE: Pendant cables are co-axial, if the lower screw in step 4 is made too tight, the inner an outer wire will short. A short circuit will render the entire system in-operative and possibly damage the transformer. Check all pendant splices for continuity before installing.**



CHECK SPLICE:

Before mounting, with lamp removed from the socket, check for continuity. There should be none.

Insert lamp in socket and re-check. There should now be continuity, indicating a completed circuit.

Install with power off.