

131 2' x 4'

Lensed Static Troffer,
Grid Mount



FEATURES & SPECIFICATIONS

INTENDED USE

Specification grade, low profile troffer meets an almost limitless range of applications. Troffer is ideal for all commercial and industrial buildings requiring general illumination with recessed configurations.

SIZE W x L x H in inches (mm)

23.75W x 48.0L x 4.0Dp (600 x 610 x 100)

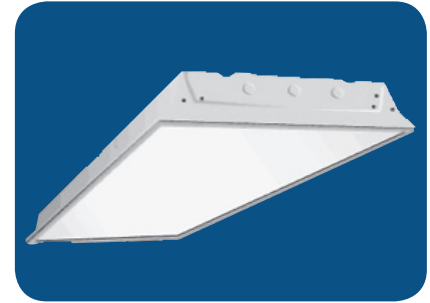
LAMP

2, 3, or 4 lamp positions.

MATERIALS & FEATURES

Housing is die-formed and embossed code 22 gauge steel. Finish is high reflectance baked white enamel. Wiring knockouts are provided on back and end of housing. Ballast cover or reflector snaps into place; no tools required for ballast access. Lens is held with a hinged steel door frame; frame hinges downward on either side and is held closed by two positive cam latches. Premium, full specular reflectors are available as an option to increase efficiency or modify lighting distribution.

- POST PAINTED POWDER COAT FINISH
- Shallow design for low clearance plenums
- Clear 0.10thk A12 acrylic lens is standard; many options available.
- Flush steel hinges from either side; field reversible.
- Access plate to simplify installation



MOUNTING

Recessed inverted T-Bar ceilings. Grid mount.

LISTING

Fixture & Ballast: UL Listed.

Ballast: Thermally protected, class P, HPF, Non PCB

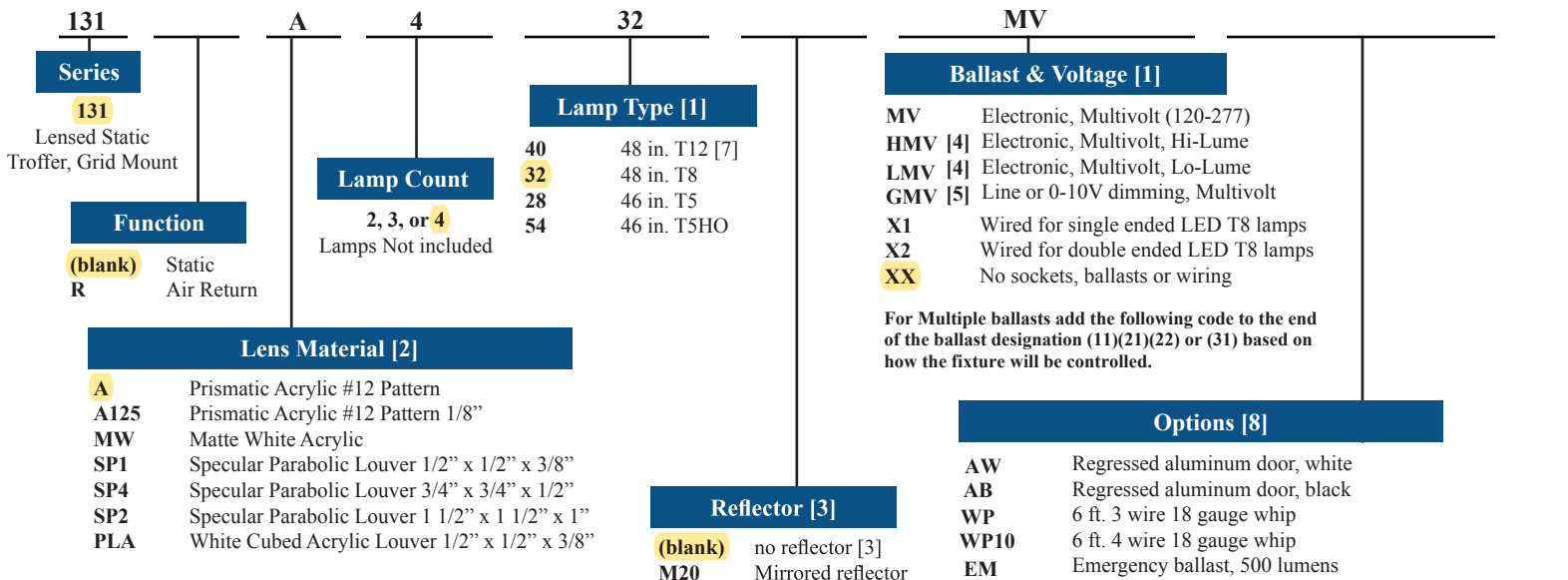
TYPICAL OPTIONS AND ACCESSORIES

Emergency ballasts, whips, regressed doors, wire guards, frame kits, and lenses. See options page at the end of the T02Grid section, or contact factory for more details.

*See HB131 Series for 6 lamp conversion

ORDERING INFORMATION

Example: 131 A 432 MV



Notes

- [1] See end of T02Grid for many additional lamps, ballasts, finishes, and options.
- [2] Many additional lens materials are available. Contact factory for additional information.
- [3] Custom reflectors available to create any light distribution.
- [4] HiLume and LoLume ballasts available for T8 lamps only.
- [5] Line dimming ballasts available for T8 & T5HO lamps only.
- [6] Magnetic ballasts available for T8 & T12 only.
- [7] Magnetic & electronic T12 ballasts drive a 34W energy saver lamp.
- [8] EM for T5, T5HO requires T5 emergencies

* Change 35 to 40 or 50 for 4000K or 5000K