



HLF LED Floods; Size 1 & 2

Energy-Saving, High-Lumen Floodlighting Solutions



Outdoor

AcuityBrands.

Confidentiality Statement

The information in this presentation is confidential and proprietary, and may not be used, reproduced or distributed without the express written permission of

Acuity Brands Lighting, Inc.

Defining the Opportunity

+ **No-apologies replacements for 400W and 1000W HID Floodlights**

With up to 64,000 lumens the Lithonia High Lumen Flood (HLF) products can replace HID luminaires without sacrificing illuminance.

+ **Huge install base**

The Lithonia HLF products can replace the installed base of over 10 million 400W and 1000W floods. Both yoke and slip fitter mounting options makes for easy one-for-one replacements.

+ **Priced to Sell**

The Lithonia HLFs are priced to not only be competitive, but to also provide the financial paybacks customers desire.

Key Benefits

+ Energy Savings

Delivering up to 70% in energy savings when replacing 400W and 1000W metal halide luminaires lumens

+ Maintenance Savings

The combination of the short lamp life of 1000W metal halide (only 9,000 hours) and the typical high mounting heights of high wattage floods makes maintenance savings an important part of the HLF value proposition. The HLF expected service life is over 100,000 hrs.; saving up to ten expensive lamp changes.

+ Easy to Install

With universal yoke and slip fitter mounting options, the Lithonia HLF's are easy to install, keeping total installed costs low.

Introducing Lithonia High Lumen Flood



HLF1

19,200 – 32,000 Lumens
400W MH Equal ++
1000W MH Replacement



HLF2

39,000 – 64,000 Lumens
1000W MH Equal

Performance Summary

	HLF1			HLF2		
Power Package	P1	P2	P3	P1	P2	P3
Lumens (MFL, 4000K)	19,370	27,354	32,638	39,250	53,847	64,248
Lumens (WFL, 4000K)	19,203	27,117	32,315	38,911	53,381	63,611
Watts	166W	246W	295W	328W	487W	598W
Initial LPW (MFL)	116 LPW	111 LPW	110 LPW	119 LPW	110 LPW	107 LPW
Lumen Maintenance (50,000 hours)	L96	L96	L90	L96	L96	L89
Lumen Maintenance (100,000 hours)	L93	L93	L83	L93	L93	L83

1000W MH Replacement

Luminaire Package	TFA Flood 1000W MH	HLF2 LED		
		P1	P2	P3
Watts	1080W	328W	487W	598W
Initial Delivered Lumens (6x6)	70,810	39,250	53,847	64,248
Mean Delivered Lumens (40% of Life)	45,665	37,680	51,693	57,181
End of Life Delivered Lumens	38,911	36,503	50,078	53,325
LPW (Mean)	42 LPW	115 LPW	106 LPW	96 LPW
Lamp Life	9,000 hrs.	100,000 hrs.	100,000 hrs.	100,000 hrs.
Energy Savings (%)	-	70%	55%	45%

5-Year Operating Cost Comparison

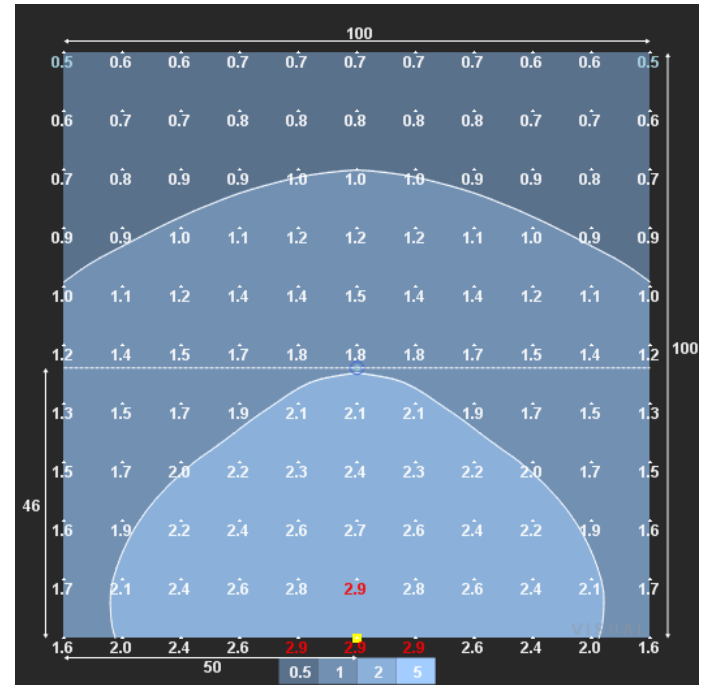
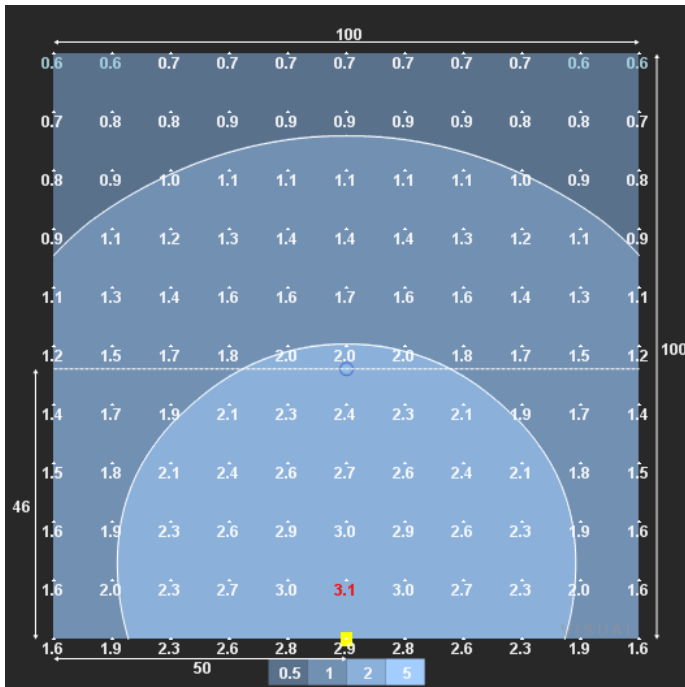
Luminaire Package	TFA Flood 1000W MH	HLF2 LED		
		P1	P2	P3
Input Watts	1080W	328W	487W	598W
Energy Savings (percent over HID)	-	70%	55%	45%
Annual Energy Costs* (\$0.13/KWH)	\$615	\$186	\$277	\$341
Lamp change costs (2 changes @ \$200 each)	\$400	-	-	-
5-year Total Operating Cost per Luminaire	\$3,475	\$930	\$1,385	\$1,705
5-Year Savings	-	\$2,545	\$2,090	\$1,770
Average Annual Savings	-	\$509	\$418	\$354

* 12 hrs./day operation

1000W MH Equivalent

HLF2 LED **P3** 40K WFL MVOLT
 0.90 LLF (57,100 delivered lumens)
 598W (45% savings)

TFA 1000M Metal Halide
 0.72 LLF (45,600 delivered lumens)
 1080W



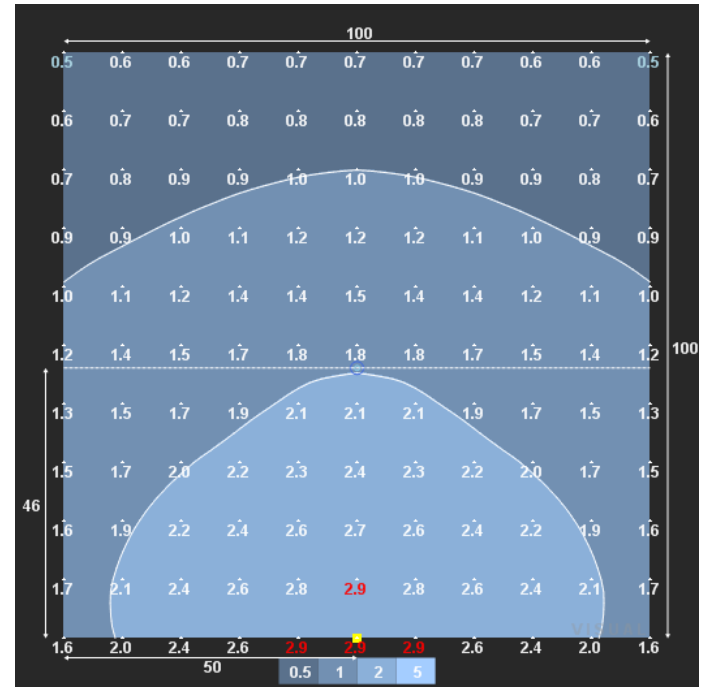
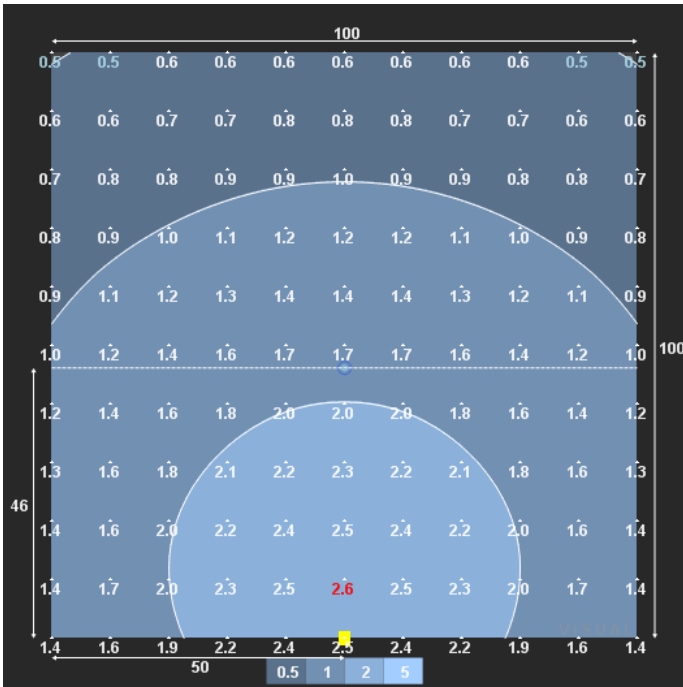
100'W x 100'H
 80' Setback

3.1 fc	Maximum fc	2.9 fc
---------------	-------------------	---------------

1000W MH Replacement

HLF2 LED **P2** 40K WFL MVOLT
 0.90 LLF (51,700 delivered lumens)
 487W (55% Savings)

TFA 1000M Metal Halide
 0.72 LLF (45,600 delivered lumens)
 1080W

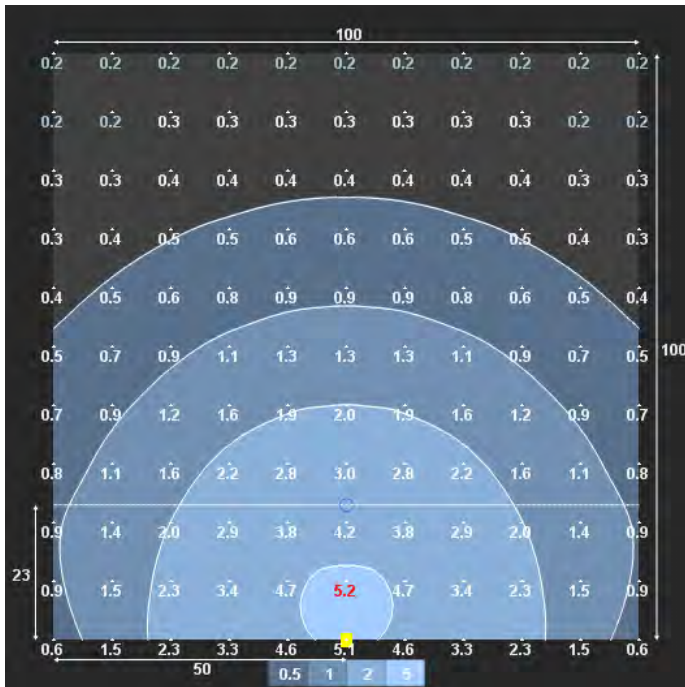


100'W x 100'H
 80' Setback

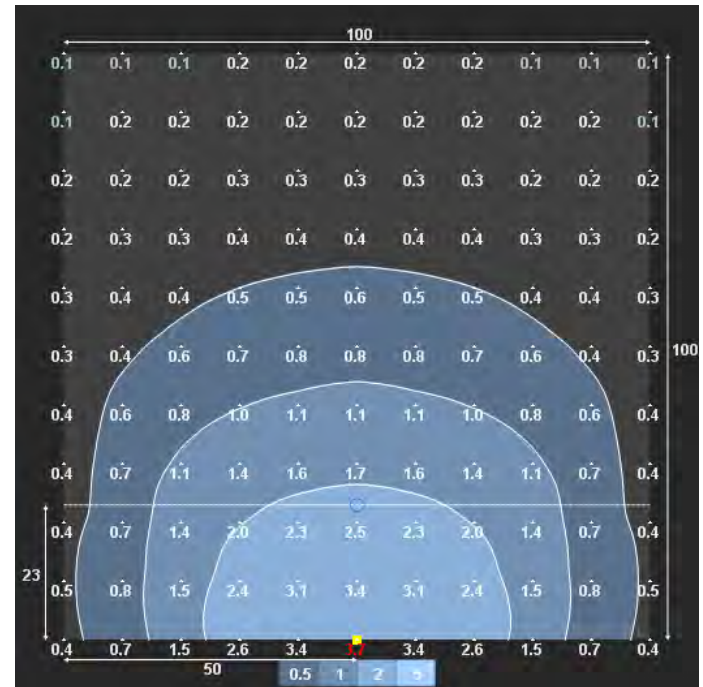
2.6 fc	Maximum fc	2.9 fc
---------------	-------------------	---------------

400W MH Equal ++

HLF1 LED **P2** 40K WFL MVOLT
 0.90 LLF
 246W (47% savings)



TFA 400M Metal Halide
 0.72 LLF
 460W



100'W x 100'H
 40' Setback

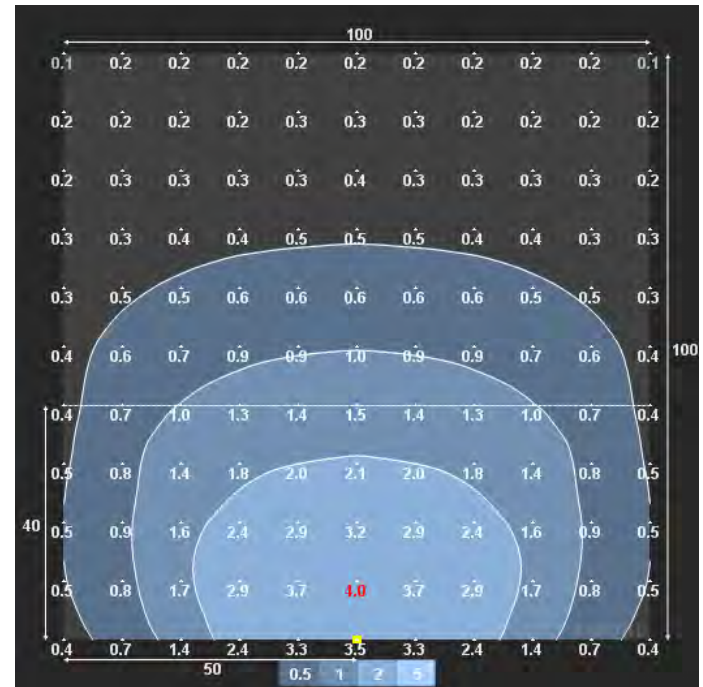
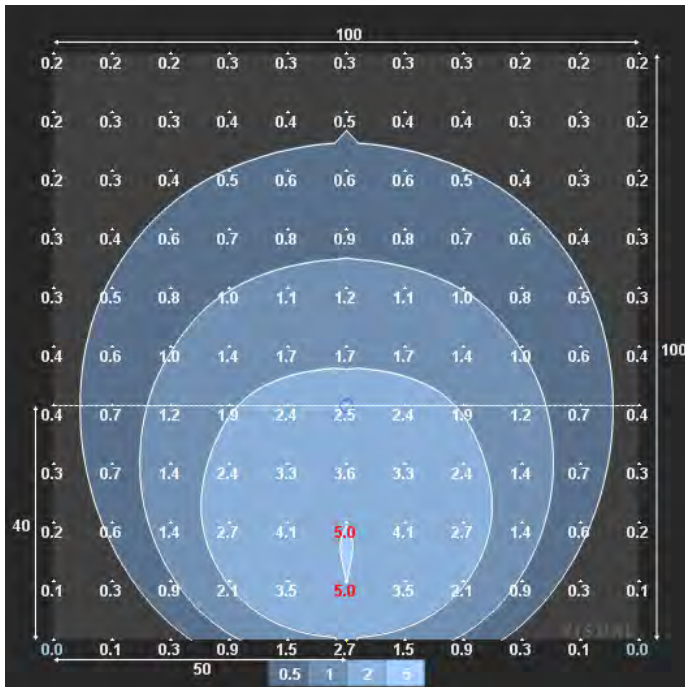
5.2 fc	Maximum fc	3.7 fc
---------------	------------	---------------

400W MH Equal

DSXF3 LED 8 530 40K WFL
 0.90 LLF
 148W (67% savings)



TFA 400M Metal Halide
 0.72 LLF
 460W



100'W x 100'H
 40' Setback

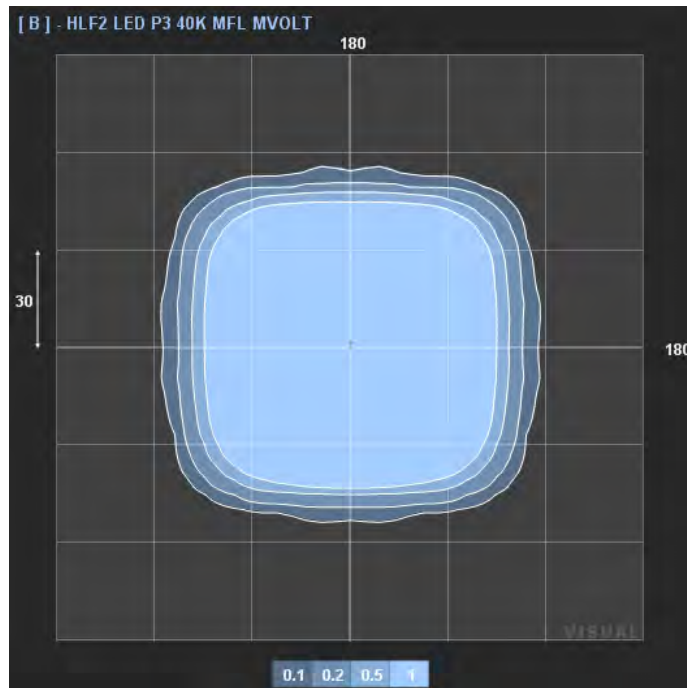
5.0

Maximum fc

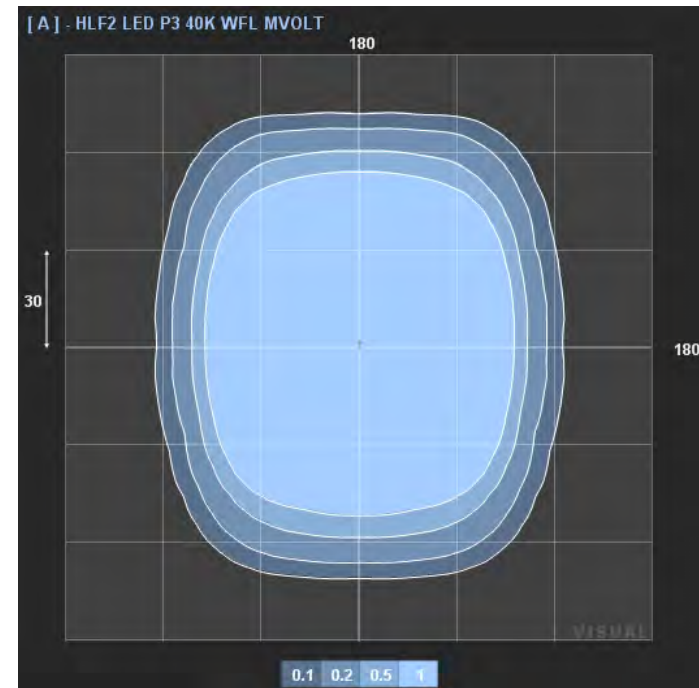
4.0 fc

Distribution Options

HLF2 LED P3 40K **MFL** MVOLT
0.90 LLF
6 x 6



HLF2 LED P3 40K **WFL** MVOLT
0.90 LLF
7 x 7



100'W x 100'H
30' Setback

82% of the installed base of TFA's have a 7x7 (TA) distribution.

Mounting Options

HLF2
Tilted Yoke Mount



HLF2
Slip Fitter Mount



Faceplate Options

White (standard)



Black (optional)



HLF2 LED P2 40K WFL MVOLT IS **CFB** DDBXD

Accessories

Full Baffle



Top Visor



HLF2 LED P2 40K WFL MVOLT IS **UBV** DDBXD

HLF2 LED P2 40K WFL MVOLT IS **FV** DDBXD

HLF Accessories

Wire Guard



Polycarbonate Vandal Guard



HLF2 LED P2 40K WFL MVOLT IS **UGA** DDBXD

HLF2 LED P2 40K WFL MVOLT IS **WG** DDBXD

ROAM Enabled

+ Site-wide Control and Monitoring

- + Increased energy savings by dimming luminaires during periods of low occupancy.
- + Save \$85 per year by dimming to 50% for six hours per night.*
- + New ANSI C136.41 5/7-pin receptacle allows driver dimming leads to be connected directly to the ROAM node.
- + Eliminates need for the Dimming Control Module (DCR)
- + MVOLT (120-277V), 347V & 480V nodes available



HLF2 LED ... **PER5** DDBXD

*HLF2 P3 (599W) dimmed to 50% for 6 hrs. per night; \$0.13 KW*Hr.