

| |
|----------------|
| Catalog Number |
| Notes |
| Type |

FEATURES & SPECIFICATIONS

INTENDED USE — SBL LED wraparound provides a digital lighting platform to deliver general ambient lighting for surface-mount applications. The SBL provides a similar look to that of an existing fluorescent wrap with all of the excellent benefits of LED: energy savings, long life, and maintenance savings. Ideal for closets, storage rooms, and offices.

CONSTRUCTION — Linear side prisms control brightness, pyramidal bottom prisms minimize lamp image. Continuous side flanges on fixture body provide light trap and continuous diffuser support to prevent accidental opening and simplify maintenance. Full depth, white enamel end plates.

Die-formed from code gauge cold-rolled steel. Channel cover snaps into place without the use of tools. Full end cap factory installed to reduce job site labor.

OPTICS — The translucent white diffuser reduces glare and pixilation without impacting performance.

ELECTRICAL — Long-life LEDs, coupled with high-efficiency drivers, provide superior quantity and quality of illumination for extended service life. 90% LED lumen maintenance at 50,000 hours (L90/50,000). The LEDs have a CRI of 82.

eldoLED driver options deliver choice of dimming range and choices for control, while assuring flicker-free, low-current inrush, 89% efficiency and low EMI.

Pair the SBL with the fixture mount Sensor Switch LSXR sensor for additional energy savings when the space is unoccupied. The LSXRHL sensor dims the fixture down to a low-level setting when there is no occupancy. This option is ideal for stairwells, back rooms, and closets due to the low occupancy level in those spaces.

Optional nLight® embedded controls continuously monitor system performance, allow for constant lumen management / compensation function, facilitate simple "plug-and-play" network and controls upgrading via Cat-5 cable. Ballast disconnect provided where required to comply with US and Canadian codes.

LISTINGS — CSA certified to meet U.S. and Canadian standards.

Damp listed.

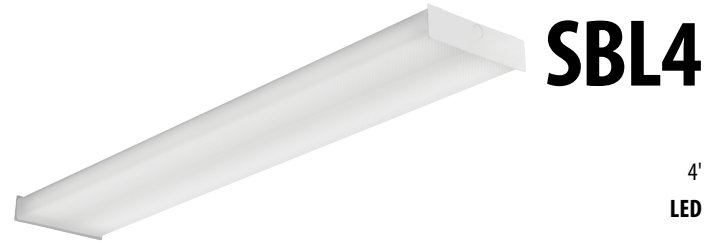
WARRANTY — 5-year limited warranty. Complete warranty terms located at

Note: Actual performance may differ as a result of end-user environment and application.

All values are design or typical values, measured under laboratory conditions at 25 °C.

Specifications subject to change without notice.

Square-basket LED Wraparound




CSA+ Capable Luminaire

This item is an A+ capable luminaire, which has been designed and tested to provide consistent color appearance and out-of-the-box control compatibility with simple commissioning.

- All configurations of this luminaire meet the Acuity Brands' specification for chromatic consistency
- This luminaire is part of an A+ Certified solution for nLight® control networks when ordered with drivers marked by a shaded background*
- This luminaire is part of an A+ Certified solution for nLight control networks, providing advanced control functionality at the luminaire level, when selection includes driver and control options marked by a shaded background*

To learn more about A+, visit [*See ordering tree for details](#)

SBL4 LED Wraparound



A+ Capable options indicated by this color background.

ORDERING INFORMATION

Lead times will vary depending on options selected. Consult with your sales representative.

Example: SBL4 4000LM 80CRI 35K MIN10 GZT MVOLT

| SBL4 | | | | | | |
|------------------|---------------------|--------------|-------------------|--|---------------------------|--------------------------------------|
| Series | Lumens ¹ | CRI | Color temperature | Minimum Dimming Level | Control | Voltage |
| SBL4 4' LED wrap | 3000LM 3000 lumens | 80CRI 80 CRI | 30K 3000 K | MIN10 Dims to 10% ² | GZT Generic 0-10V Dimming | MVOLT 120-277V 347 347V ⁵ |
| | 4000LM 4000 lumens | | 35K 3500 K | MIN1 Dims to 1% ³ | | |
| | 4800LM 4800 lumens | | 40K 4000 K | NODIM On/off, non-dimming ⁴ | ZT eldoLED 0-10V Dimming | |
| | 6000LM 6000 lumens | | 50K 5000 K | SLD Step-level dimming ⁴ | NLIGHT nLight enabled | |
| | 7200LM 7200 lumens | | | | | |

| Emergency Options | | Lumen Management | | Occupancy Control | Occupancy Sensor Technology | Options | | | |
|-------------------|---|------------------|----------------------------|-------------------|--|---------|------------------|-------|-------------------------|
| EL7L | 700 nominal lumen battery pack (non-CEC compliant) ⁵ | (blank) | None | LSXRHL | Sensor Switch® fixture mount sensor with High/Low occupancy operation ^{8,9} | PIR | Passive Infrared | USPOM | US Point of Manufacture |
| EL14L | 1400 nominal lumen battery pack (non-CEC compliant) ⁶ | CL80 | Constant lumen output, 80% | LSXR10 | Sensor Switch® fixture mount sensor with on/off occupancy operation ⁸ | | | | |
| E10WLCP | EM Self-Diagnostic battery pack, 10W Constant Power, CEC compliant ⁶ | | | | | | | | |
| EMG | for use with nLight on generator supply EM power ⁷ | | | | | | | | |

| ORDERING INFORMATION | | | | | | | | |
|----------------------|--------------|-------------------|--------|-------------------|---------|---------|------------|----------------------|
| Catalog number | UPC | Description | Lumens | Color temperature | Voltage | Wattage | Pallet qty | Standard carton qty. |
| SBL4 347 LP835 | 190887855692 | 4' LED Wraparound | 3,933 | 3500 K | 347 | 32 | 70 | 1 |
| SBL4 347 LP840 | 190887856675 | 4' LED Wraparound | 3,994 | 4000 K | 347 | 32 | 70 | 1 |

- Notes
- 1

Approximate lumen output.
- 2

Requires GZT control option.
- 3

Requires GZT, ZT, or NLIGHT control.
- 4

Not available with Control or Sensor Options.
- 5

Not available with SLD option.
- 6

Not available with 7200LM option.
- 7

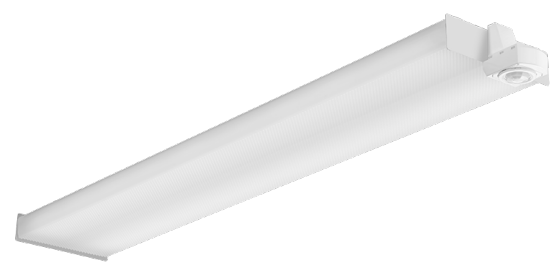
nLight EMG option requires a connection to existing nLight network. Power is provided from a separate N80 or N100 enabled fixture. Requires NLIGHT.
- 8

Requires MIN1, ZT and PIR options.
- 9

Dims to approximately 10% light output when unoccupied.

SBL4 LED Wraparound

| Performance Data | | | |
|------------------|--------|-------------|-----|
| Lumen Package | Lumens | Input Watts | LPW |
| 3000LM 80CRI 30K | 3165 | 25.5 | 124 |
| 3000LM 80CRI 35K | 3236 | 25.5 | 127 |
| 3000LM 80CRI 40K | 3286 | 25.5 | 129 |
| 3000LM 80CRI 50K | 3407 | 25.5 | 133 |
| 4000LM 80CRI 30K | 3847 | 32.4 | 119 |
| 4000LM 80CRI 35K | 3933 | 32.4 | 121 |
| 4000LM 80CRI 40K | 3994 | 32.4 | 123 |
| 4000LM 80CRI 50K | 4141 | 32.4 | 128 |
| 4800LM 80CRI 30K | 4698 | 40.5 | 116 |
| 4800LM 80CRI 35K | 4802 | 40.5 | 119 |
| 4800LM 80CRI 40K | 4877 | 40.5 | 120 |
| 4800LM 80CRI 50K | 5057 | 40.5 | 125 |
| 6000LM 80CRI 30K | 5985 | 49.9 | 120 |
| 6000LM 80CRI 35K | 6119 | 49.9 | 123 |
| 6000LM 80CRI 40K | 6214 | 49.9 | 125 |
| 6000LM 80CRI 50K | 6443 | 49.9 | 129 |
| 7200LM 80CRI 30K | 7052 | 61.9 | 114 |
| 7200LM 80CRI 35K | 7209 | 61.9 | 117 |
| 7200LM 80CRI 40K | 7321 | 61.9 | 118 |
| 7200LM 80CRI 50K | 7591 | 61.9 | 123 |

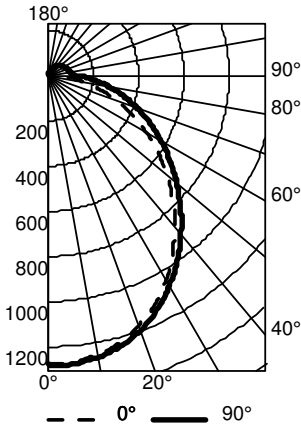


| Sensor Switch LSXRHL Sensor | |
|-----------------------------|---|
| Lens type: | 10 - Low Mount 360° coverage |
| Dimming: | HL - High/Low Occupancy operation |
| Min Dim Level: | 3V - approximately 10% light output when unoccupied |
| Time Delay: | 5M - 5 minutes |

How to Estimate Delivered Lumens in Emergency Mode
Use the formula below to estimate the delivered lumens in emergency mode.
Delivered Lumens = 1.25 x P x LPW
P = Output power of emergency driver. P = 10W for E10WLCP option.
LPW = Lumen per watt rating of the luminaire. LPW information available in Performance Data section.

PHOTOMETRICS

SBL4 4000LM 80CRI 35K



| CP Summary | | Coefficients of Utilization | | | | | | | | | | Zonal Lumen Summary | | | | |
|------------|------|-----------------------------|-----|-----|-----|-----|-----|-----|-----|-----|-----|---------------------|------------|------|-------|--------|
| | | pc | 80% | | | 20% | | | 50% | | | | | | | |
| | | 0° | 90 | pw | 70% | 50% | 30% | 70% | 50% | 30% | 10% | 50% | 30% | 10% | Zone | Lumens |
| 0° | 1279 | 1279 | 0 | 117 | 117 | 117 | 114 | 114 | 114 | 107 | 107 | 107 | 0° - 30° | 979 | 24.9 | 24.9 |
| 5° | 1275 | 1281 | 1 | 106 | 101 | 96 | 98 | 94 | 90 | 92 | 89 | 86 | 0° - 40° | 1583 | 40.2 | 40.2 |
| 15° | 1224 | 1240 | 2 | 96 | 88 | 80 | 85 | 78 | 73 | 80 | 75 | 70 | 0° - 60° | 2748 | 69.9 | 69.9 |
| 25° | 1118 | 1139 | 3 | 88 | 77 | 68 | 75 | 67 | 61 | 71 | 64 | 59 | 0° - 90° | 3660 | 93.1 | 93.1 |
| 35° | 962 | 997 | 4 | 80 | 68 | 59 | 66 | 58 | 51 | 63 | 56 | 50 | 90° - 120° | 182 | 4.6 | 4.6 |
| 45° | 780 | 829 | 5 | 74 | 61 | 51 | 59 | 51 | 44 | 56 | 49 | 43 | 90° - 130° | 221 | 5.6 | 5.6 |
| 55° | 596 | 657 | 6 | 68 | 55 | 46 | 53 | 45 | 39 | 51 | 43 | 38 | 90° - 150° | 263 | 6.7 | 6.7 |
| 65° | 414 | 497 | 7 | 63 | 49 | 41 | 48 | 40 | 34 | 46 | 39 | 33 | 90° - 180° | 273 | 6.9 | 6.9 |
| 75° | 242 | 344 | 8 | 59 | 45 | 37 | 44 | 36 | 30 | 42 | 35 | 30 | 0° - 180° | 3933 | 100.0 | 100.0 |
| 85° | 91 | 203 | 9 | 55 | 41 | 33 | 41 | 33 | 27 | 39 | 32 | 27 | | | | |
| 90 | 15 | 132 | 10 | 51 | 38 | 30 | 37 | 30 | 25 | 36 | 29 | 24 | | | | |

MOUNTING DATA

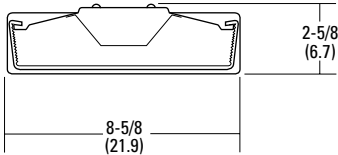
Suspension Kit Ceiling Types: F1 for use with most T-bar and screw slot grid ceiling applications. Designed for on-grid and off-grid installations.
F2 for use with recessed or surface-mount horizontal J-box applications.
For unit or row installation; surface or suspend mounting.
Individual installation — One double-stem or two single-stem hangers required.
For aircraft cable, one STACG_, STACGF_, or STACGE_ required for each suspension point.
Note: 2' configurations with emergency option cannot be stem mounted.
See ACCESSORIES below for hanging devices.



DIMENSIONS

All dimensions are inches (centimeters) unless otherwise noted.

| Specifications | |
|----------------|--------------|
| Length: | 48 (122.0) |
| Width: | 8-5/8 (21.9) |
| Depth: | 2-5/8 (6.7) |



All dimensions are inches (centimeters) unless otherwise indicated.