



**READ AND FOLLOW ALL SAFETY INSTRUCTIONS!
SAVE THESE INSTRUCTIONS AND DELIVER TO OWNER
AFTER INSTALLATION**

IMPORTANT SAFETY INSTRUCTIONS

▲ WARNING

To reduce the risk of death, injury or property damage from fire, electric shock, cuts, abrasions, falling parts, and other hazards:

- Service of the equipment must be performed by qualified service personnel.
- Installation and maintenance must be performed by a person familiar with the construction and operation of this product and any hazards involved. All applicable codes and ordinances must be followed.
- Read this document before installing, servicing, or maintaining this equipment or installing a lamp. These instructions do not cover all installation, service, and maintenance situations. If your situation is not covered, or if you do not understand these instructions or additional information is required, contact *Lithonia Lighting* or your local *Lithonia Lighting* Distributor.
- Read and follow all warnings and instructions provided by the lamp manufacturer.

▲ WARNING

Before installing, servicing, or maintaining this equipment, follow these general precautions.

To reduce the risk of electrocution:

- Make sure the equipment is properly grounded.
- Always de-energize the circuit and/or equipment before connecting to, disconnecting from, or servicing the equipment.


To reduce the risk of fire:

- Keep material away that can burn from hot lamp.
- Make sure lamps are correctly installed.
- Use supply conductors with a minimum installation temperature rating as specified on equipment.

To reduce the risk of personal injury from cuts, abrasions, or falling parts:

- Wear gloves to prevent cuts or abrasions from sharp edges when removing from carton, handling and maintaining this equipment.
- Do not use abrasive materials, glass cleaners or other solvents on reflector or lens. These substances may damage equipment and cause parts to eventually break and fall.
- Do not install a damaged fixture.

▲ CAUTION: Observe lamp manufacturer's recommendations and restrictions on lamp operation, including but not limited to ballast type, burning position, replacement and cycling. Use only lamps that comply with applicable ANSI standards.

NOTICE: If lamp is marked  it contains mercury. Follow disposal laws. See www.lamprecycle.org

Lithonia Lighting, a division of *Acuity Brands Lighting, Inc.*, assumes no responsibility for claims arising out of improper or careless installation or handling of this product.

SAVE THESE INSTRUCTIONS



An **Acuity Brands** Company

Lithonia Lighting
INDUSTRIAL VALUE STREAM
One Lithonia Way, Conyers, GA 30012
Phone: 800-315-4963 Fax: 770-981-8141
www.lithonia.com

PART NUMBER: U217808
REVISION DATE: 1/24/20087

Installation Instructions

VSL SURFACE ENCLOSED VANDAL FIXTURE



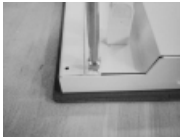
MUST HAVE TORX® TYPE SCREW DRIVER WITH CENTER PIN REJECT TO CORRECTLY INSTALL THE LENS. IF VSL OR VSLC PRODUCTS ARE SHIPPED WITH LAMPS INSTALLED, LAMPS MUST BE REMOVED BEFORE BEGINNING INSTALLATION.

FOR WET LOCATION SIDE CONDUIT ENTRY; IMPORTANT NOTE PLEASE READ.

If you are using side entry conduit as your source for running the supply wires, please see additional instructions under the section: FOR SIDE ENTRY CONDUIT APPLICATION ONLY.

WIRING (when supply wires will be coming into the fixture from the back of unit.

1. Remove gear tray by removing the 4 hex head type screws. Do not discard. You will use them to re-attach the gear tray after wiring is completed.



2. Lift gear tray up and away from housing.



3. Determine location of where incoming supply wires will enter the fixture. Remove the appropriate knock out.

4. Pull supply wires through knock out into the housing to prepare for wiring. Mount housing utilizing the 6 mounting holes located on the back of the housing. (mounting hardware not provided)

5. Connect the safety chain from the gear tray to the housing.



6. Wire fixture wires in accordance with your local electrical code and NEC. (black wire to black wire, white wire to white wire and ground wire to ground wire or ground screw.

7. Re-attach gear tray to housing. Be extremely careful not to pinch any wires.

8. Secure gear tray to housing by using the 4 hex head screws you removed in step 1.

Installation Instructions

VSL SURFACE ENCLOSED VANDAL FIXTURE

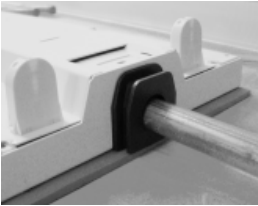


FOR SIDE ENTRY CONDUIT APPLICATION ONLY:

1. Using pliers, remove the tear away section from the end of the lens. This is accomplished by placing pliers onto the tear away section and gently rocking back and forth until section comes free of the lens.



2. Slide black lens gasket (provided) over the end of the conduit that you will be threading into the fixture. For WL (Wet Location applications, you must attach the gasket (supplied with fixture)



4. Follow steps 1, 2, 4, 6, 7 and 8 from basic wiring instructions above

INSTALLATION OF LAMPS

Install lamps carefully. Making sure pins are properly inserted into the sockets.

ATTACHING THE LENS

1. Attach lens to housing with screws provided.
2. Make sure that lens is properly secured to ensure there are no gaps between lens and housing.