

## FEATURES & SPECIFICATIONS

**INTENDED USE** — Ideal one-for-one replacement of conventional HID and fluorescent high bay systems. Applications include warehousing, manufacturing, gymnasiums, and other large indoor spaces with mounting heights up to 60'. **Certain airborne contaminants can diminish the integrity of acrylic and/or polycarbonate.**

**CONSTRUCTION** — Structural elements such as the channel and end caps are fabricated from steel for maximum rigidity. Wireguard attachment points provided. For high ambient (HA) option, lightweight aluminum heat sink designed to perform in ambient temperatures up to 55 °C for maximum naturally convective cooling.

**OPTICS** — General, narrow, wide and focus distributions available to meet both horizontal and vertical light level requirements. Injection molded refractors for repeatable photometry. Diffuse lens standard to provide glare control and LED protection. Optics are IP5X rated.

**ELECTRICAL** — L88 at 60,000 hours, L70> 100,000 hours. Utilizes a 90°C case temperature driver for maximum life at high temperatures. 0.90 power factor and 3kA/6kV level of surge protection is standard. Optional 5kA/10kV surge protection available. Available as 120-277V or 347-480V input.

0-10V dimming standard for a dimming range of 100% to 10%.

**WIRELESS NETWORKING** — XPoint™ Wireless technology creates a mesh network to ensure communication between fixtures, sensors and wall stations facility-wide. This option provides superior lighting management capabilities including granular control, configuration and custom grouping for increased energy savings.

**INSTALLATION** — Suitable for suspension by chain, cable, surface-mounting bracket (THUN accessory), hook monopoint or single (pendant) monopoint. Surface mounting not recommended without optional surface mounting bracket. To maintain ambient listing, fixture should be mounted at a minimum plenum height of 18".

**LISTINGS** — CSA certified to US and Canadian safety standards. Damp location listed. Suitable for ambient temperatures from -40°F (-40°C) to 113°F (45°C) when suspended 18" from ceiling. High ambient option available (HA), suitable for ambient temperatures -40°F (-40°C) to 131°F (55°C) when suspended 18" from ceiling. The Bluetooth® word mark and logos are registered trademarks owned by Bluetooth SIG, Inc. and any use of such marks by Acuity Brands is under license. Other trademarks and trade names are those of their respective owners.

DesignLights Consortium® (DLC) Premium qualified product and DLC qualified product. Not all versions of this product may be DLC Premium qualified or DLC qualified. Please check the DLC Qualified Products List.

**WARRANTY** — 5-year limited warranty.

**Note:** Actual performance may differ as a result of end-user environment and application.

All values are design or typical values, measured under laboratory conditions at 25 °C. Specifications subject to change without notice.

LED High Bay

# IBG



### Stock configurations are offered for shorter lead times:

Standard Part Number	Stock Part Number	DLC QPL Product ID	DLC Premium?
IBG 12000LM SEF AFL GND MVOLT GZ10 40K 80CRI DWH	IBG 12L MVOLT	PAMMN2VX	✓
IBG 15000LM SEF AFL GND MVOLT GZ10 40K 80CRI DWH	IBG 15L MVOLT	P3G6HADN	✓
IBG 18000LM SEF AFL GND MVOLT GZ10 40K 80CRI DWH	IBG 18L MVOLT	P851GVEP	✓
IBG 24000LM SEF AFL GND MVOLT GZ10 40K 80CRI DWH	IBG 24L MVOLT	PZBJQY5S	✓
IBG 12000LM SEF AFL GND HVOLT GZ10 40K 80CRI DWH	IBG 12L HVOLT	PQ5BU878	✓
IBG 15000LM SEF AFL GND HVOLT GZ10 40K 80CRI DWH	IBG 15L HVOLT	PSWUYJP8	✓
IBG 18000LM SEF AFL GND HVOLT GZ10 40K 80CRI DWH	IBG 18L HVOLT	PRVPPS9D	✓
IBG 24000LM SEF AFL GND HVOLT GZ10 40K 80CRI DWH	IBG 24L HVOLT	P2UE1Z54	✓
IBG 12000LM SEF AFL GND MVOLT GZ10 50K 80CRI DWH	IBG 12L MVOLT 5K	P7TZ4ZV	✓
IBG 15000LM SEF AFL GND MVOLT GZ10 50K 80CRI DWH	IBG 15L MVOLT 5K	PMX8GZJS	✓
IBG 18000LM SEF AFL GND MVOLT GZ10 50K 80CRI DWH	IBG 18L MVOLT 5K	P85EZU7	✓
IBG 24000LM SEF AFL GND MVOLT GZ10 50K 80CRI DWH	IBG 24L MVOLT 5K	PQ5CSK48	✓
IBG 12000LM SEF AFL GND HVOLT GZ10 50K 80CRI DWH	IBG 12L HVOLT 5K	PFRXRQKT	✓
IBG 15000LM SEF AFL GND HVOLT GZ10 50K 80CRI DWH	IBG 15L HVOLT 5K	PV4M2BP5	✓
IBG 18000LM SEF AFL GND HVOLT GZ10 50K 80CRI DWH	IBG 18L HVOLT 5K	PA36YXUT	✓
IBG 24000LM SEF AFL GND HVOLT GZ10 50K 80CRI DWH	IBG 24L HVOLT 5K	P5H22E5M	✓

### A+ Capable Luminaire

This item is an A+ capable luminaire, which has been designed and tested to provide consistent color appearance and out-of-the-box control compatibility with simple commissioning.

- All configurations of this luminaire meet the Acuity Brands' specification for chromatic consistency
- This luminaire is part of an A+ Certified solution for nLight® or XPoint™ Wireless control networks marked by a **shaded background\***

\*See ordering tree for details

# IBG LED High Bay



A+ Capable options indicated by this color background.

## ORDERING INFORMATION

Lead times will vary depending on options selected. Consult with your sales representative.

**Example:** IBG 24000LM SEF AFL GND MVOLT GZ10 40K 80CRI DWH

IBGN	24000LM		SEF	AFL	GND	277	AZ10	40K		
Series	Nominal lumens		Performance package	Lens	Distribution	Voltage	Driver	Color temperature		
IBG	8000LM	8,000 lumens <sup>2</sup>	30000LM	30,000 lumens	SEF Standard efficiency	AFL Acrylic, frosted	WD Wide	MVOLT 120-277V	GZ10 0-10V dimming <sup>7</sup>	30K 3000 K
IBGN <sup>1</sup>	12000LM	12,000 lumens	36000LM	36,000 lumens	HEF Premium efficiency	ACL Clear acrylic	GND General	HVOLT 347-480V <sup>3</sup>	AZ10 0-10V dimming, aux. output <sup>8</sup>	35K 3500 K
	15000LM	15,000 lumens	48000LM	48,000 lumens		PCL Clear polycarbonate	ND Narrow	120 120V		40K 4000 K
	18000LM	18,000 lumens	60000LM	60,000 lumens		PFL Semi-diffuse polycarbonate	FD Focus	208 208V		50K 5000 K
	24000LM	24,000 lumens				L/LENS Less lens		240 240V		
								277 277V		
								347 347V <sup>4,5</sup>		
								480 480V <sup>4,5,6</sup>		

80CRI	PS30250		HLN360HL	BPK	DWH
Coloring rendering index	Options				Finish
70CRI 70 CRI	HA	High ambient <sup>9</sup>	Individual Controls: <sup>23</sup>		DNA Natural aluminum
80CRI 80 CRI	SPD	Surge protection device <sup>10</sup>	HLN360	Haleon 360° High Mount Occ Sensor, pre-wired; Bluetooth <sup>® 24</sup>	DWH Gloss white
90CRI 90 CRI	BPK	Fixture backpack <sup>11</sup>	HLN360HL	Haleon 360° High Mount Occ Sensor w/HL Default, pre-wired; Bluetooth <sup>® 24</sup>	
	PS1050	Emergency battery pack 10W, non-CEC compliant <sup>12</sup>	HLN360ADC	Haleon 360° High Mount Occ Sensor w/ADC Default, pre-wired; Bluetooth <sup>® 24</sup>	
	PS10250	Emergency battery pack 10W, non-CEC compliant <sup>13</sup>	HLN360ANL	Haleon 360° High Mount Occ Sensor w/ANL Default, pre-wired; Bluetooth <sup>® 24</sup>	
	PS10250 T20C	Emergency battery pack 10W, CEC compliant <sup>13</sup>	HLNASL	Haleon High Mount Aisleway Occ Sensor, pre-wired; Bluetooth <sup>® 24</sup>	
	PS30250	Emergency battery pack, 30W, non-CEC compliant <sup>14</sup>	HLNASLHL	Haleon High Mount Aisleway Occ Sensor w/HL Default, pre-wired; Bluetooth <sup>® 24</sup>	
	BGTD	Generator transfer device <sup>15</sup>	HLNASLADC	Haleon High Mount Aisleway Occ Sensor w/ADC Default, pre-wired; Bluetooth <sup>® 24</sup>	
	SF	Single fuse <sup>16</sup>	HLNASLANL	Haleon High Mount Aisleway Occ Sensor w/ANL Default, pre-wired; Bluetooth <sup>® 24</sup>	
	DF	Double fuse <sup>17</sup>	LAOZU	360° high mount motion sensor, pre-wired <sup>25</sup>	
	OUTCTR	Wiring leads pulled through back center of fixture <sup>18</sup>	LAH0SZU	360° high mount motion sensor with dimming, pre-wired <sup>25</sup>	
	OCS	RELOC <sup>®</sup> OnePass <sup>®</sup> selectable cable 6' installed <sup>20,21</sup>	LAPZU	360° high mount motion sensor with photocell, pre-wired <sup>25</sup>	
	OCU___	RELOC <sup>®</sup> OnePass <sup>®</sup> unselectable cable 6' installed (must specify tap position) <sup>19,21</sup>	LAM0SZU	360° high mount motion sensor, dimming & switching photocell, pre-wired <sup>25</sup>	
	IMP	Integrated modular plug <sup>22</sup>	C6D0SUEM	360° high mount motion sensor, dimming only (photocell disabled), pre-wired; UL924 listed (not available with battery pack or BGTD) <sup>26,27</sup>	
	RRL_	RELOC <sup>®</sup> -Ready luminaire. (Not available with Haleon sensor options) See page 10 for ordering information	C10D0SUEM	360° low mount motion sensor, dimming only (photocell disabled), pre-wired; UL924 listed (not available with battery pack or BGTD) <sup>26,28</sup>	
	WGX	Standard wire guard, installed (not available with Haleon sensor)	nLight wired: <sup>29</sup>		
	Cord sets:		nPP16D	nLight <sup>®</sup> dimming & switching module	
	CS1W	Straight plug, 120V <sup>19</sup>	nPP16DER	nLight <sup>®</sup> dimming & switching module with emergency relay (not available with battery pack or BGTD)	
	CS3W	Twist-lock, 120V <sup>19</sup>	nMSI	nLight <sup>®</sup> high mount aisleway motion sensor, pre-wired <sup>30,31</sup>	
	CS7W	Straight plug, 277V <sup>19</sup>	nMSI360	nLight <sup>®</sup> 360° high mount motion sensor, pre-wired <sup>31,32</sup>	
	CS11W	Twist-lock, 277V <sup>19</sup>	nMSID	nLight <sup>®</sup> high mount aisleway motion sensor with dimming, pre-wired <sup>32,33</sup>	
	CS25W	Twist-lock, 347V <sup>19</sup>	nMSI360D	nLight <sup>®</sup> 360° high mount motion sensor with dimming, pre-wired <sup>33,34</sup>	
	CS97W	Twist-lock, 480V <sup>19</sup>	nLight wireless:		
	CS93W	600 SO white cord, no plug (no voltage required)	NLTAIR2 RKOA	nLight AIR Generation 2 enabled 360° high mount motion sensor	
	CS93W5CD	600 SO 5-conductor white cord, no plug (no voltage required)	NLTAIR2 RKOB	nLight AIR Generation 2 enabled 360° low mount motion sensor	
			NLTAIR2 rPP20D	nLight AIR Generation 2 dimming and switching module <sup>26,27</sup>	
			NLTAIR2 rPP20DER	nLight AIR Generation 2 dimming and switching module with emergency relay (not available with battery pack or BGTD) <sup>26,27</sup>	
			X-Point wireless:		
			MSI6XADL DSCXADL	XPoint™ Wireless 360° high mount motion sensor with photocell	
			XPW	XPoint™ Wireless 0-10V relay, external (utilizes XPA CMRBO) 55°C max ambient	
			XAD	XPoint™ Wireless 0-10V relay, internal, lower max ambient (not available with Haleon sensor) <sup>33</sup>	
			XPWEM	XPoint™ Wireless 0-10V relay, external (utilizes XPACMRBOEM) 55°C max ambient, meets UL924 (not available with battery pack or BGTD)	
			XAD924	XPoint™ Wireless 0-10V relay, internal, lower max ambient, meets UL924 (not available with battery pack or BGTD) <sup>35</sup>	

See Accessories and footnotes on next page

# IBG LED High Bay

Accessories: Order as separate catalog number.					
<b>Mounting:</b>		<b>Cord sets and sensors for IMP option:</b>		<b>Wire guards (not available with Haleon sensor):</b>	
IBAC120 M20	Aircraft cable 10' with hook (one pair)	CS1WIMP	Straight plug, 120V	WGIBG22	Wire guard for IBG 8000LM; gloss white
IBAC240 M20	Aircraft cable 20' with hook (one pair)	CS3WIMP	Twist-lock, 120V	WGIBG24	Wire guard for IBG 12000/15000LM; gloss white
IBHMP	Hook monopoint	CS7WIMP	Straight plug, 277V	WGIBG26	Wire guard for IBG 18000/24000/30000LM; gloss white
HBBS36	Chain hanger with chain, 36" (one pair)	CS11WIMP	Twist-lock, 277V	WGIBG42	Wire guard for all IBGN lumen packages; gloss white
IBGACVH	Aircraft 10' V hanger (one pair)	CS25WIMP	Twist-lock 347V	WGIBG46	Wire guard for IBG 36000/48000/60000LM; gloss white
IBGPMPHB	Pendant monopoint splice box, includes side covers (3/4" hub) for use with OUTCTR option, not available with BPK option	CS93WIMP	600V 50 white cord, no plug (no voltage required)	WGIBG22DNA	Wire guard for IBG 8000LM; natural aluminum
THUN	Tong hanger bracket (order 2 per fixture) <sup>36</sup>	CS97WIMP	Twist-lock 480V	WGIBG24DNA	Wire guard for IBG 12000/15000LM; natural aluminum
		MSIIMP1BG	Aisle sensor for use with IMP option	WGIBG26DNA	Wire guard for IBG 18000/24000/30000LM; natural aluminum
		MSI360IMP1BG	360° sensor for use with IMP option	WGIBG42DNA	Wire guard for all IBGN lumen packages; natural aluminum
				WGIBG46DNA	Wire guard for IBG 36000/48000/60000LM; natural aluminum

- Available with 18000LM, 24000LM, 30000LM and 36000LM only.
- 8,000LM not available with HVOLT, 347, 480, or Haleon sensor controls.
- Not available with 8000LM. Not available with BTGD, nPP16D, nPP16DER, PS1050, PS10250, PS30250, NLTAIR2 RPP20D, NLTAIR2 RPP20DER or XAD options.
- When ordered with 8000LM or Xpoint controls voltage selected utilizes the fixture back pack.
- Not available with NLTAIR2 RPP20D and NLTAIR2 RPP20DER options.
- Not available with nPP16D or nPP16DER.
- Not available with Haleon sensor control options.
- Required with Haleon sensor control options.
- 55 C when suspended, 45 C when surface mounted. Not available with BGTD, PS1050, PS10250, PS30250 or XAD.
- Standard with HVOLT, 347, or 480V - only specify for MVOLT, 120, 208, 240, or 277V when additional surge protection is needed. Standard with Motion sensors/ controls, BGTD & Power Sentry battery options.
- Required with PS1050, PS10250, PS30250, BGTD. Required with 8000LM when ordered with 347/480V. Required with Xpoint controls when ordered with 347/480V. Not available with nLight. Not for use with THUN mount (surface).
- Requires BPK option. Available 120-277V only. Available with 8000LM only. Not available with IMP. See spec sheet PS1050 for more information. For use in ambient temperatures 32° F to 113° F.
- Requires BPK option. Available 120-277V only. Not available with 8000LM. Not available with IMP. Only available for factory installation. See spec sheet PS10250 for more information. For use in ambient temperatures 50° F to 113° F.
- Requires BPK option. 120 or 277V only. Not available with 8000LM. Not available with IMP. See spec sheet PS30250 for more information. For use in ambient temperatures 32° F to 112° F.
- Requires BPK option. 120 or 277V only. Not available with PS1050, PS10250, PS30250 or HA. Not available with 347 or 480V when ordered in combination with XAD or XPW. For ambient temperatures up to 104°F (40°C). 16 Available on 120, 277, 347V. Not available with MVOLT or HVOLT.
- Available on 208, 240, 480V and Haleon sensors. Not available with MVOLT or HVOLT.
- Not available with BPK option. Requires IBGPMPHB accessory to mount fixture. Not available with Cord Set options.
- Must specify voltage.
- Cannot be used in dimming applications, must use RRLC12S.
- Fixture will bear dry location label.
- Not available with BPK, nPP16D, nPP16DER, nMSI, nMSI360, PS1050, PS10250, or PS30250.
- Must specify voltage. Refer to page 7 for Haleon sensor default settings matrix. Refer to page 9 for additional LSXR ordering options. Refer to page 10 for additional C6DOSUEM and C10DOSUEM information.
- RRL option not available. Not available with OUTCTR.
- This sensor configuration is suitable for minimum ambient temperature of 14°F (-10°C). See page 9 for low temperature option providing -4°F (-20°C) minimum ambient temperature.
- Daylight harvesting functionality not enabled by default. See page 10 for default sequence of operation.
- Utilizes XPA CMRB6.
- Utilizes XPA CMRB10.
- Not available with 208, 240, or 480V. Not available with HA option.
- nMSI options utilizes a nPP16 and nCMB 50 sensor, CAT5e connector cable also included.
- nMSI360 options utilizes a nPP16 and nCMB 6 sensor, CAT5e connector cable also included.
- nMSID options utilizes a nPP16D and nCMB 50 sensor CAT5e connector cable also included.
- nMSI360D options utilizes a nPP16D and nCMB 6 sensor, CAT5e connector cable also included.
- NLTAIR2 RPP20D and NLTAIR2 RPP20DER not available with BPK, battery pack options, BGTD, 347, or 480V. Not available with HA.
- Not available with HVOLT. When ordered with 347V or 480V, BPK option is required. Not available with HA option.
- Maximum ambient temperature of standard fixture mounted with THUN is 95°F (35°C). With HA option 113°F (45°C). Not available with MSIIMP1BG or MSI360IMP1BG options.

## EMERGENCY LUMENS AFL GND (500K 70CRI)

Delivered lumens calculation provided on battery spec sheet does not represent emergency lumen output on IBG product. Forward voltage does not match constant current design in all cases. See chart below for IBG lumen output in emergency mode.

Fixture	IBG			IBGN
	8000LM (PS1050 only)	12000LM - 15000LM	18000LM - 60000LM	18000LM - 36000LM
PS1050/PS10250	1600	1300	1900	1200
PS30250	N/A	4000	2400	3800

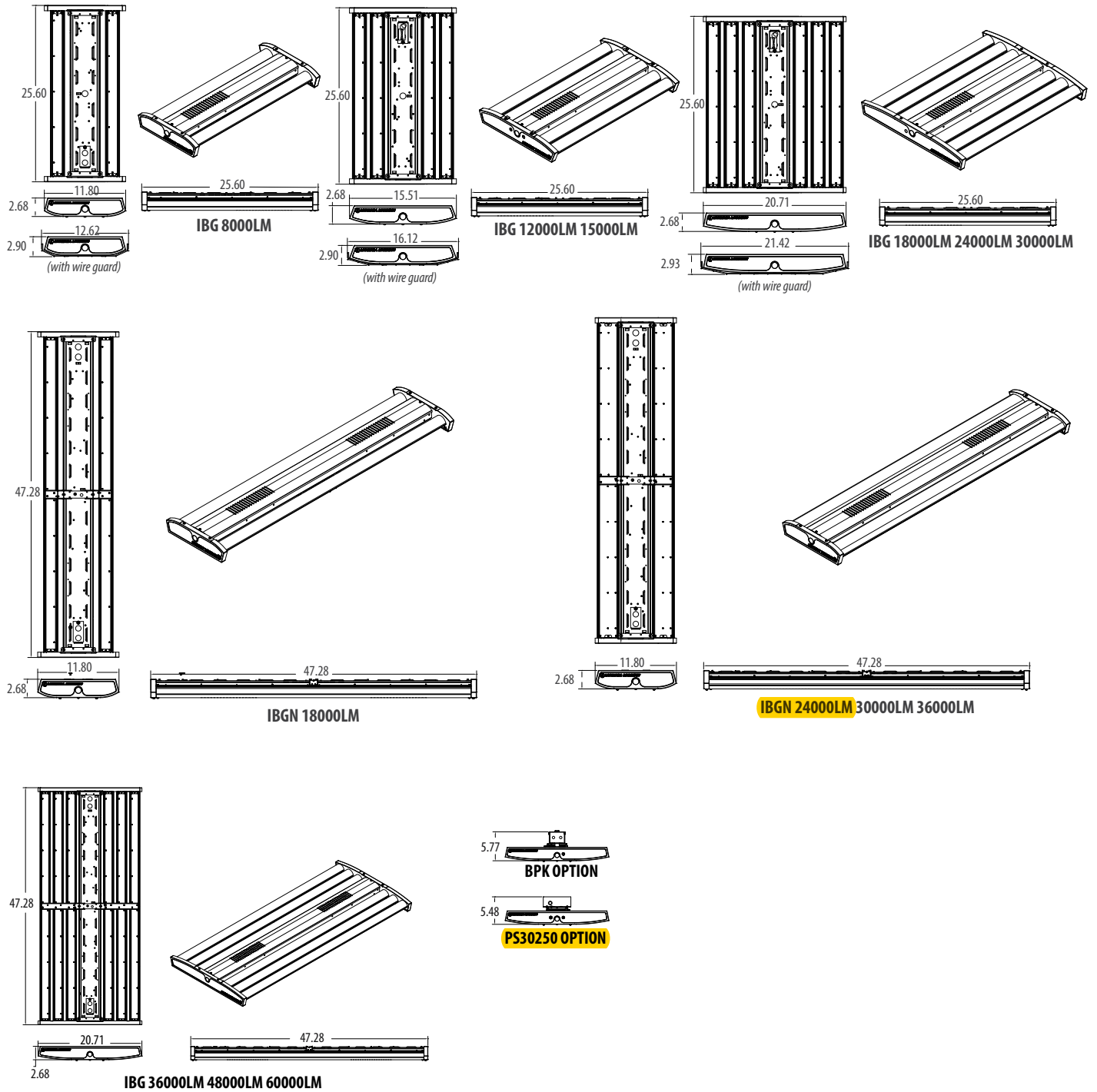
**Note:** For emergency lumen output of specific model, please consult factory.

# IBG LED High Bay

## DIMENSIONS

All dimensions are in inches (centimeters) unless otherwise indicated.  
Dimensions may vary with options or accessories.

Weight: (may vary with options or accessories)  
 8L: 7.75 lbs (3.515Kg)  
 12L/15L: 10.5 lbs (4.762Kg)  
 18L/24L/30L: 15.9 lbs (7.212Kg)  
 18L/24L/30L/36L: 4' Narrow - 16.25 lbs (7.370Kg)  
 36L/48L/60L: 4' - 6' Mod - 21.75 lbs (9.865Kg)



# IBG LED High Bay

## IBG CHARACTERISTICS

Lumen package	Wattage								Length	Width	Depth	Comparable Light Source
	Standard efficiency				High efficiency							
	120V	277V	347V	480V	120V	277V	347V	480V	Dimensions are shown in inches (centimeters) unless otherwise noted.			
8000LM	55	54	58	61	50	49	51	54	25.6	11.75	2.75	100W MH, 4-lamp T8 NBF
12000LM	79	77	77	76	70	69	68	67	25.6	15.52	2.75	175W MH, 4-lamp T8 HBF, 2-lamp T5HO
15000LM	97	95	97	96	87	86	86	86	25.6	15.52	2.75	200W MH, 6-lamp T8 NBF
18000LM	114	112	114	115	102	100	102	103	25.6	20.65	2.75	250W MH, 6-lamp T8 HBF, 4-lamp T5HO
24000LM	154	150	150	150	136	133	135	135	25.6	20.65	2.75	400W MH, 6-lamp T5HO
30000LM	193	186	188	188	176	171	173	173	25.6	20.65	2.75	575W MH, 10-lamp T8 HBF
36000LM	225	221	227	229	200	197	203	206	47.29	20.65	2.75	750W MH, 8-lamp T5HO
48000LM	301	293	301	302	267	261	269	270	47.29	20.65	2.75	875W MH, 10-lamp T5HO
60000LM	385	374	378	377	332	323	330	330	47.29	20.65	2.75	1000W MH

## IBGN OPERATIONAL DATA

	Lumen package	Efficiency level	Lens/distribution			
			Acrylic frosted/ general	Clear acrylic/narrow	Clear acrylic/wide	Clear acrylic/focus
<b>Delivered lumens 4000K, 80CRI</b>	18000LM	SEF	17036	16028	16566	16520
		HEF	17776	16724	17285	17237
	<b>24000LM</b>	<b>SEF</b>	<b>22727</b>	<b>21383</b>	<b>22100</b>	<b>22038</b>
		HEF	24123	22696	23457	23392
	30000LM	SEF	28642	26948	27851	27773
		HEF	29493	27748	28679	28599
36000LM	SEF	34336	32305	33388	33295	
	HEF	34912	32846	33948	33853	
<b>Delivered lumens 5000K, 80CRI</b>	18000LM	SEF	17663	16618	17175	17128
		HEF	18320	17237	17814	17765
	24000LM	SEF	23564	22170	22913	22849
		HEF	24862	23391	24176	24108
	30000LM	SEF	29696	27940	28876	28796
		HEF	30397	28599	29558	29475
	36000LM	SEF	35600	33494	34617	34520
		HEF	35982	33853	34988	34890

## IBGN CHARACTERISTICS

Lumen package	Wattage								Length	Width	Depth
	Standard efficiency				High efficiency						
	120V	277V	347V	480V	120V	277V	347V	480V	Dimensions are shown in inches (centimeters) unless otherwise noted.		
18000LM	117	114	115	114	104	102	101	101	47.29	11.75	2.75
<b>24000LM</b>	172	<b>170</b>	167	167	152	150	153	153	<b>47.29</b>	<b>11.75</b>	<b>2.75</b>
30000LM	209	205	208	207	183	180	179	178	47.29	11.75	2.75
36000LM	246	240	242	243	207	203	202	201	47.29	11.75	2.75

## PROJECTED LUMEN MAINTENANCE

IBG 2ft & 4ft						
Operating hours	0	15,000	30,000	45,000	60,000	100,000
Lumen maintenance factor	1	0.97	0.95	0.93	0.91	0.86
IBGN						
Operating hours	0	15,000	30,000	45,000	60,000	100,000
Lumen maintenance factor	1	0.97	0.93	0.90	0.87	0.81

## AMBIENT TEMPERATURE RATINGS

Mounting	Suspended	Surface
Standard temperature rating	113°F (45°C)	95°F (35°C)
HA option temperature rating	131°F (55°C)	113°F (45°C)

## LUMENS VS. AMBIENT TEMPERATURE

Ambient °C	Ambient °F	Lumen Multiplier
0	32	1.04
5	41	1.03
10	50	1.02
20	68	1.01
25	77	1.00
30	86	0.99
35	95	0.99
40	104	0.98
45	113	0.97
50	122	0.96
55	131	0.96

# IBG LED High Bay

## HALEON - Integrated Occupancy Sensor with Bluetooth® Programmability

- Programmable sensor settings over Bluetooth® with Acuity VLP smartphone app.
- Default programming options to service various application spaces - occupancy detection, 0-10V dimming and daylight harvesting.
- 360° High Mount and High Mount Aisleway lens detection options for mounting heights up to 40 ft.
- Integrated retractable lens mask included to block unwanted detection.
- Sensor ambient temperature rating of -40°F (-40°C) to 158°F (70°C).



## Haleon Default Programming

Model	Default Operation	LSXR Equivalent	Occupancy Time Delay	Photocell Mode	Photocell Set-point	Low Trim	High Trim	Dim to Off Time Delay
HLNxxx	On/Off Occupancy Only	LSXR 6 LT or LA00STU	10 minutes	Disabled	n/a	n/a	100%	Disabled
<b>HLNxxxHL</b>	<b>Occupancy w/ 0-10V Dimming (High/Low/Off)</b>	<b>LSXR 6 HL LT or LAH0STU</b>	<b>10 minutes</b>	<b>Disabled</b>	<b>n/a</b>	<b>10%</b>	<b>100%</b>	<b>2.5 minutes</b>
HLNxxxADC	Occupancy w/ Dim & Switch Photocell	LSXR 6 ADC LT or LAM0STU	10 minutes	On/Off & Auto Dim	50 fc	10%	100%	0 seconds
HLNxxxANL	Dim & Switch Photocell with High/Low Occupancy Operation	LSXR 6 ANL LT or LAG0STU	10 minutes	On/Off & Auto Dim	50 fc	10%	100%	Stay Dim/ Never Off

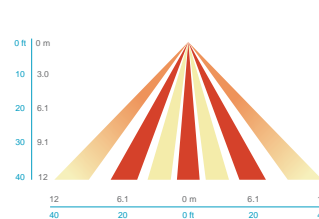
Note: Lens detection noted in place of 'xxx'

## HALEON COVERAGE PATTERNS

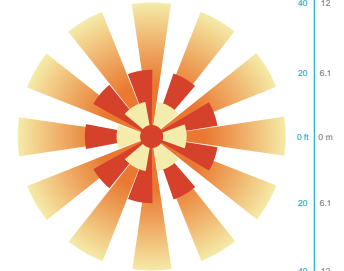
### HIGH MOUNT 360°

- Optimized full coverage pattern for 10 – 40 ft. (3.1 – 12 m)
- Reliable detection of large motion (e.g. pedestrian walking traffic) up to 30 ft. (9.1 m) mounting height
- Reliable detection of extra-large motion (e.g. forklift traffic) up to 40 ft. (12 m) mounting height
- Stow-able rotating lens shield can be utilized to mask areas in which detection is not desired

SIDE VIEW



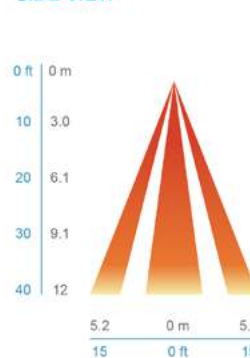
TOP VIEW



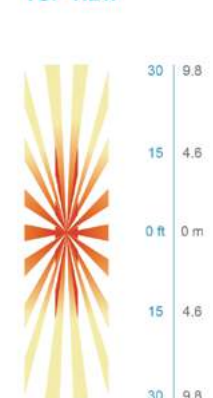
### HIGH MOUNT AISLEWAY

- Optimized bi directional coverage pattern for aisleways with 10 – 40 ft. (3.1 – 12 m) mounting heights
- 1.2X's mounting height equals approximate detection range
- Reliable detection of large motion (e.g. pedestrian walking traffic) up to 30 ft. (9.1 m) mounting height
- Reliable detection of extra-large motion (e.g. forklift traffic) up to 40 ft. (12 m) mounting height
- Stow-able rotating lens shield can be utilized to mask areas in which detection is not desired

SIDE VIEW



TOP VIEW





## FEATURES & SPECIFICATIONS

**INTENDED USE** — The PS30250 dual-voltage (120V or 277V) emergency LED driver is designed to provide a minimum of 90 minutes of illumination for LED luminaires during the loss of normal AC power. It is UL classified for field installation for specified luminaires and UL recognized for factory installation, providing 30-watts maximum output power, constant current, with two options for loads up to 100 VDC or 250VDC. Option will be configured during installation.

**CONSTRUCTION** — 20-gauge, black steel enclosure.

**PERFORMANCE** — When normal AC power fails, the PS30250 immediately drives the LED load at a reduced light output for a minimum of 90 minutes. When AC power is present, the emergency LED driver operates in various charging modes to ensure the sealed, maintenance-free, high-temperature nickel-cadmium batteries are fully recharged within 48 hours after a discharge and remains fully charged until the next loss of AC power. The pilot light/test switch provides visual and manual means of monitoring the system operation.

### ELECTRICAL

Constant current series resistor-type charger, provides high efficiency and reliable operation.

High efficiency push-pull inverter is the most effective method of converting power. It provides maximum light output, battery life and reliability.

AC/LVD reset allows battery connection before AC power is applied and prevents battery damage from deep discharge.

Dual-volt input capability – 120V or 277V

Output — 100 mA for voltage up to 250 VDC  
250 mA for voltage up to 100 VDC

Maximum Output Power – 30 watts

Maximum AC input (120V) – 92 mA, 9.6 Watts

Maximum AC input (277V) – 41 mA, 10.2 Watts

**BATTERY** — Sealed, maintenance-free, high temperature nickel cadmium battery. Ensures long life over wide temperature ranges. Battery automatically recharges after any discharge.

External battery connectors allow battery pack to be disabled for maintenance and installation.

Pilot light and test switch provide visual and manual means of monitoring system operation. Two 1/2" holes are required to permit mounting of pilot light/test switch in fixture housing.

**INSTALLATION** — Mounts concealed within plenum or on top of fixture housing for improved aesthetics and protection from vandalism. Wiring protected by 18" flexible conduit.

Emergency Driver may be remote mounted up to 50 feet from fixture, or half the distance recommended by the driver manufacturer, whichever is less.

Test switch may be remote mounted up to eight feet from emergency driver. For additional feet refer to the accessories for ordering.

**LISTINGS** — UL recognized. Meets UL 924, NFPA 101 (current Life Safety Code), NEC and OSHA illumination standards.

Standard unit is UL recognized for installation in damp or wet location sealed and gasketed listed luminaires.

Not suitable for mounting outside the luminaire in a wet location application.

Ambient temp ratings 0°C to 50°C (32°F to 122°F).

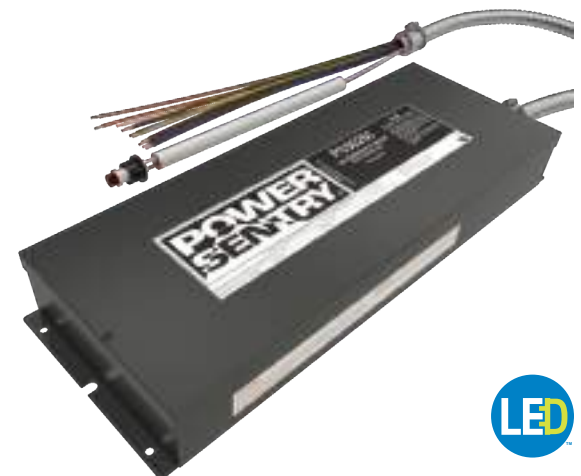
UL classified for field installation for the Acuity Brands IBG, IBL and IBH fixture families.

**WARRANTY** — 5-year limited warranty.

**Note:** Actual performance may differ as a result of end-user environment and application. Specifications subject to change without notice.

# PS30250

## Constant Current Emergency Driver



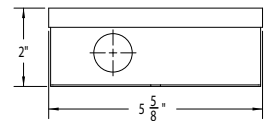
**How to Estimate Delivered Lumens in Emergency Mode** Use the formula below to estimate the delivered lumens in emergency mode

$$\text{Delivered Lumens} = 1.25 \times P \times \text{LPW}$$

P = Output power of emergency driver. P = 30W for PS30250  
LPW = Lumen per watt rating of the luminaire. This information is available on the ABL luminaire spec sheet. The LPW rating is also available at Designlight Consortium.

### MOUNTING

All dimensions are in inches.  
Enclosure Length: 15 3/8 inches  
Shipping weight: 10.3 lb (4.7 kg)



## A+ Capable Component

This product is an A+ enabling component when correctly applied with compatible Acuity Brands' Luminaires.

- This product has been interoperability tested with the luminaire and becomes part of the A+ Certified solution of the luminaire (see luminaire spec sheet for all A+ certified details)
- Field installation for these luminaires is A+ certified and luminaire warranty maintained when installed and wired per instructions

### ORDERING INFORMATION

Lead times will vary depending on options selected. Consult with your sales representative.

**Example:** PS30250 FIK

<b>PS30250 FIK</b>	
<b>Series</b>	
PS30250 FIK	Power Sentry 30W Max Output Wattage 100 or 250VDC Max Output Voltage <sup>1,2</sup>

<b>Accessories<sup>3</sup>: Order as separate catalog number.</b>	
ELA RTS2	Remote test switch; can be mounted up to 25' away from emergency driver and replaces the standard test switch shipped with the PS30250 FIK

### Notes

- 1 100VDC/250VDC option set during installation via violet wire connection. See installation instructions for more details.
- 2 Includes installation instruction and plate for field installation.
- 3 See accessories specification sheets for details on other compatible devices: ELA-RTS-TSPLP-PSTS-PSPRS8.