

## INSTALLATION INSTRUCTIONS

### LED Light Engine Kit Model: 7" Round Engine

**120V: TRIAC DIMMING**  
TKT120013RDxx-x1

**UNV (120V-277V): 0-10V DIMMING**  
TKMUNV013RDxx-x1  
TKMUNV011RDxx-x1

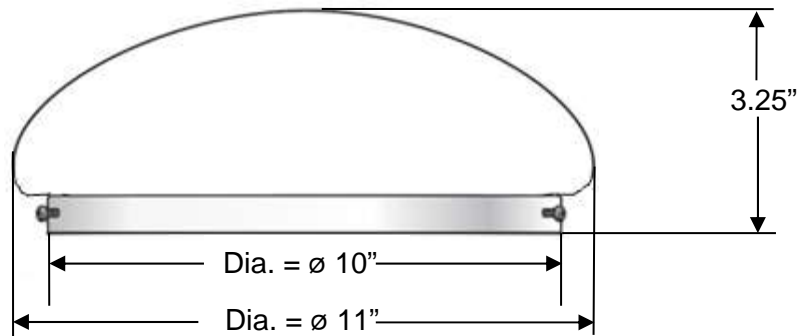
**Disclaimer:** The driver pictured above is the 0-10V Dimming version. The Triac Dimming driver does not have the gray and purple wires.

**1.0 INSTALLATION INSTRUCTION WARNINGS**

1. "THIS PRODUCT MUST BE INSTALLED IN ACCORDANCE WITH THE APPLICABLE INSTALLATION CODE BY A PERSON FAMILIAR WITH THE CONSTRUCTION AND OPERATION OF THE PRODUCT AND THE HAZARDS INVOLVED."
2. "WARNING - Risk of fire or electric shock. LED Retrofit kit installation requires knowledge of luminaires electrical systems. If not qualified, do not attempt installation. Contact a qualified electrician."
3. "WARNING - Risk of fire or electric shock. Install this kit only in the luminaires that has the construction features and dimensions shown in the photographs and/or drawings."
4. "WARNING - To prevent wiring damage or abrasion, do not expose wiring to edges of sheet metal or other sharp objects."
5. "WARNING –Risk of fire or electric shock. Luminaire wiring and electrical parts may be damaged when drilling for installation of LED retrofit kit. Check for enclosed wiring and components."
6. "Please make sure the grounding conductor of the luminaire is properly secured to the Branch Circuit Grounding conductor. "
7. "CAUTION – RISK OF FIRE. CONSULT A QUALIFIED ELECTRICIAN TO ENSURE CORRECT BRANCH CIRCUIT CONDUCTOR."
8. "The assembly of this LED retrofit should be performed by a licensed electrician or equivalent as State or Provincial Codes and Laws dictate."
9. "WARNING – RISK OF FIRE OR ELECTRIC SHOCK. DO NOT ALTER, RELOCATE, OR REMOVE WIRING, LAMP HOLDERS, POWER SUPPLY, OR ANY OTHER ELECTRICAL COMPONENT."
10. "THE RETROFIT KIT IS ACCEPTED AS A COMPONENT OF A LUMINAIRE WHERE THE SUITABILITY OF THE COMBINATION SHALL BE DETERMINED BY CSA OR AUTHORITIES HAVING JURISDICTION."

**2.0 Minimum Original Luminaire Dimensions**

- Keep the Original Diffuser.
- Remove all the remaining original fixture parts, hardware, and lamp in order to begin the retrofit.



**Illustration 1: Minimum Original Luminaire Dimensions**

Mfr: Lamar Lighting – Model: CDW11311PN1SW

**3.0 Intended Use**

- This LED Engine Kit can retrofit any luminaire with a diameter/height greater or equal to the minimum dimensions shown above.
- This LED Engine Kit can be used with luminaires similar to the one illustrated above.

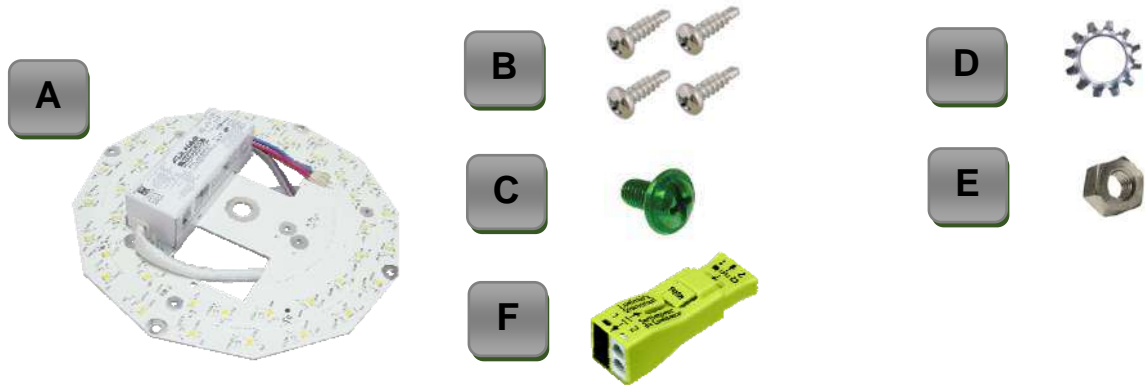
**4.0 Required Tools (Not Included)**

Tool #	Description	QTY
1	11/32" Nut Driver	1
2	3/16" Drill Bit	1
3	Power Drill	1
4	Phillips Drill Bit (P2)	1



**5.0 Included Components**

Warning: Disconnect power when servicing fixture.



Picture A: 7" LED Light Engine Kit

ITEM	DESCRIPTION	QTY
A.	LED Engine (Includes LED Module and LED Driver)	1
B.	6-20 X 3/8" Pan Head Drilling Screws	4
C.	8-32 X 1-4" Ground Green Machine Screw	1
D.	#8 External Tooth Lock Washer	1
E.	8-32 Hex Nut	1
F.	PUSH WIRE Input Power Connector (Wago 873-902 LUMI-NUTS)	1

LED Engine Retrofit Kit Consist of:				
LED Engine Retrofit Kit	LED Engine:	QTY	Hardware:	QTY
TKT120013RDxx-x1	TET120013RDxx-x1	1	TLC-HW02	1
TKMUNV013RDxx-x1	TEMUNV013RDxx-x1	1	TLC-HW02	1
TKMUNV011RDxx-x1	TEMUNV011RDxx-x1	1	TLC-HW02	1

**6.0 Original Luminaire**

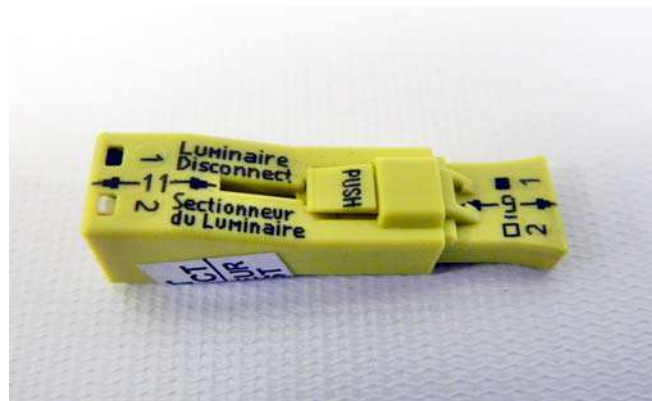
Warning: Disconnect power when servicing fixture.



Picture B: Original Luminaire Housing



Picture C: Original Diffuser and ground cable



Picture D: Connector Provided per Energy Star CSD

**Original Luminaire Disassembly:**

1. Remove all hardware, Insulation (if available) and original electronic components from the luminaire. See Picture B.
2. Parts to be kept include:
  - Original Luminaire Housing
  - Original Diffuser (See Picture C)
  - Grounding Cable (Green wire) (See Picture C). Rivet will need to be removed in order to use the Ground Cable.

**7.0 Retrofit Kit Assembly (7" Round)**

**Warning:** Disconnect power when servicing fixture.

1. Pass the LED Engine (Part: A) input power wires and dimming wires (if available) through the luminaire wire hole. See Picture #1.

**NOTE:** Please **DO NOT** remove any of the original labels in the luminaire

2. Align the LED Engine (Part: A) center hole to the luminaire center hole. See Picture #2.

**NOTE:** Make sure the key holes/mounting holes are not blocked

3. Secure the LED Engine (Part: A) to the luminaire housing by using the 6-20 x 3/8" Drilling Screws (Part: B). See Picture #2.
4. Place the provided labels in the outer space of the luminaire after the LED engine installation has been completed. Labels must be visible. See picture #2 and Illustration 2



**CAUTION: THIS LUMINAIRE HAS BEEN MODIFIED TO OPERATE LED LAMPS. DO NOT ATTEMPT TO INSTALL OR OPERATE FLUORESCENT LAMPS IN THIS LUMINAIRE.**

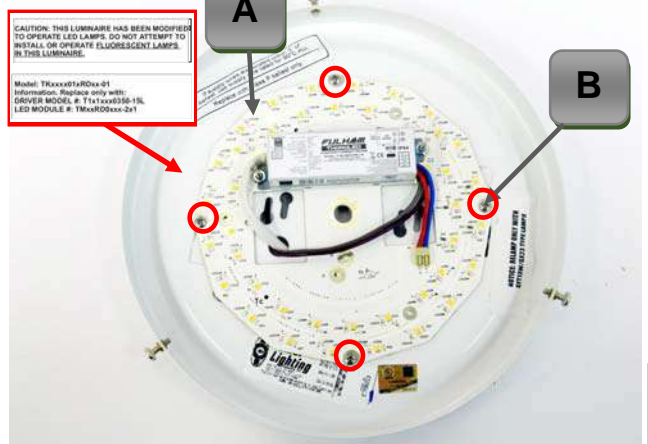
Model: TKxxx01xRDxx-01  
Information. Replace only with:  
DRIVER MODEL #: T1x1xxx0350-15L  
LED MODULE #: TMxxRD0xxx-2x1

**Illustration 2**

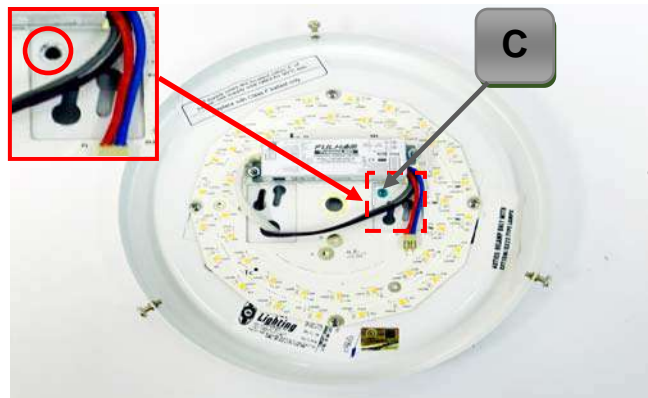
5. Drill a 3/16" hole in the shown location (arrow). See picture #3.
6. Insert the 8-32 x 3/8" Ground Green Machine Screw (Part: C) through the luminaire pre-drilled 3/16" hole. See Picture #3.



**Picture #1**



**Picture #2**



**Picture #3**

**7.1 Retrofit Kit Assembly (7" Round)**

**Warning:** Disconnect power when servicing fixture.

7. On the rear side of the luminaire, secure the grounding cable by passing the already inserted 8-32 x 3/8" Ground Green Machine Screw (Part: C) in the following order:

- A. 8-32 External Tooth Lock Washer (Part: D)



- B. Ground Cable



- C. 8-32 Hex Nut (Part: E)



**WARNING:** Ground screw assembly should not be torque down over 14 lb-in, any higher than 14lb-in will result of stripping the 8-32 x 3/8" Ground Green Machine Screw (Part: C).

**IMPORTANT:** After installation of ground wire check for grounding connection to the luminaire housing.

8. See the section below "Connecting Power to the LED System" for proper connection steps.
9. Mount the luminaire to the ceiling by using the threaded stem and nut (arrow) or the key holes (circles). See picture #5.

10. Re-attach and secure the lens to the luminaire. See Picture #6.

**Connecting power to the LED System:**

- 1) Connect the copper wire (Ground) from the luminaire housing to the ground wire (Ground) that is being fed by the power source. Connect these two wires by using a 16-18 AWG Gauge Wire Nut.
- 2) Connect the white wire (Neutral) from the LED Engine (Part: A) to the white wire (Neutral) that is being fed by the power source. Connect these two wires by using the provided connector or a 16-18 AWG Gauge Wire Nut.
- 3) Connect the black wire (Line) from the LED Engine (Part: A) to the black wire (Line) being fed by the power source. Connect these two wires by using the provided connector or a 16-18 AWG Gauge Wire Nut.

**8.0 Warranty and Contact Information**

**Warranty**

Please see our warranty policy on LED system.



**Picture #4**



**Picture #5**



**Picture #6**