



MaxLite® LED Bollard Installation

General Safety Information

These instructions should be followed to minimize condensation of moisture on the inside of the lens.

IMPORTANT:

Read instructions carefully before installing.

- This fixture must be installed by a qualified electrician.
- **WARNING** - Risk of fire or electrical shock.
- **WARNING** - Make certain power is switched OFF before starting installation or attempting any maintenance.
- This fixture must be wired in accordance with the National Electrical Code (NEC) and applicable local Codes and Ordinances. Proper grounding is required to insure personal safety. Observe all grounding procedures.

Materials Needed

- Silicone sealant, used to seal the end of the wiring conduit.
- Spray expanding foam, used to fill and seal the base of the bollard body.

Installation

STEP 1:

Remove the base from the bollard and retain the set screws to use when reinstalling the bollard body. Install the bollard anchor bolts and attach the bollard base plate to them. The method used to set the anchor bolts is dependent on the installation location and any applicable codes and ordinances, and are not a part of these instructions. Make sure the conduit containing the line feed is located within the base plate area and will extend up inside the body of the bollard when the bollard is placed on the base.

STEP 2:

Completely seal the exposed end of the wire conduit using the silicone sealant. **(Figure 1)**

STEP 3:

Remove the head of the bollard by loosening the set screws located on the outside of the bollard body underneath the head plate and place the head and set screws aside. Place the bollard body on the installed base and secure to the base using the set screws retained in Step 1.

STEP 4:

Fill the bottom of the bollard with approximately 5 inches of spray expanding foam, ensuring the foam makes complete contact around the conduit and the inside of the bollard body. **(Figure 2)**

STEP 5:

Allow time for foam to expand, then visually inspect to confirm the foam does not contain gaps between the foam and the conduit, or the foam and the inside of the bollard body. **(Figure 3)**

STEP 6:

Complete the bollard installation following all NEC and applicable local Codes and Ordinances.



Fig. 1

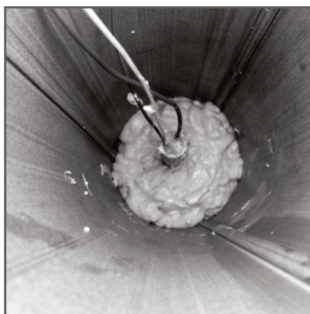


Fig. 2

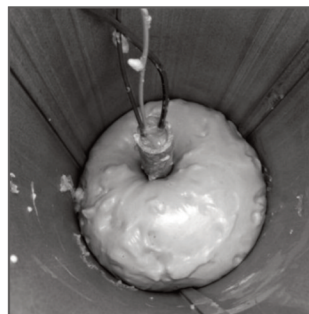


Fig. 3



MaxLite® LED Bollard Installation

Warranty Information

MaxLite Inc. warrants its products for a minimum period of **FIVE (5)** years from the date of original purchase from MaxLite or its authorized distributor/dealer (the "Warranty Period"), as follows: If a Product fails to operate during the Warranty Period as a result of defects in materials or workmanship, MaxLite will, at its option, repair it, replace it with the same or like Product.

Please refer to Maxlite's website (at <http://maxlite.com/resources/warranties>) for the complete terms and conditions of our warranty.

Limitation of Liability

THE FOREGOING WARRANTY IS EXCLUSIVE, AND IS THE SOLE REMEDY FOR ANY AND ALL CLAIMS, WHETHER IN CONTRACT, IN TORT OR OTHERWISE ARISING FROM THE FAILURE OF PRODUCT AND IS IN LIEU OF ALL OTHER WARRANTIES, EXPRESS OR IMPLIED, INCLUDING ALL WARRANTIES OF MERCHANTABILITY OR FITNESS FOR A PARTICULAR PURPOSE, WHICH WARRANTIES ARE HEREBY EXPRESSLY DISCLAIMED TO THE EXTENT PERMITTED BY LAW AND, IN ANY EVENT, SHALL BE LIMITED TO THE WARRANTY PERIOD SPECIFIED ABOVE. THE LIABILITY OF MAXLITE SHALL BE LIMITED TO THE TERMS OF THE EXPRESS WARRANTY SET FORTH HEREIN. IN NO EVENT WILL MAXLITE BE LIABLE FOR ANY SPECIAL, INCIDENTAL OR CONSEQUENTIAL DAMAGES INCLUDING, WITHOUT LIMITATION, DAMAGES RESULTING FROM LOSS OF USE, PROFITS, BUSINESS OR GOODWILL, LABOR COSTS, REMOVAL OR INSTALLATION COSTS, DECREASE IN THE LIGHT OUTPUT OF THE LAMP, AND/OR DETERIORATION IN THE LAMP'S PERFORMANCE, WHETHER OR NOT MAXLITE HAS BEEN ADVISED OF THE POSSIBILITY THEREOF. UNDER NO CIRCUMSTANCES SHALL MAXLITE'S ENTIRE LIABILITY FOR A DEFECTIVE PRODUCT EXCEED THE PURCHASE PRICE OF THAT PRODUCT. WARRANTY SERVICES PROVIDED UNDER THESE TERMS AND CONDITIONS DO NOT ENSURE THE UNINTERRUPTED OPERATION OF PRODUCTS; MAXLITE SHALL NOT BE LIABLE FOR DAMAGES CAUSED BY ANY DELAYS INVOLVING WARRANTY SERVICE.

This Limited Warranty gives you specific legal rights and you may also have other rights that may vary from state to state. Because some states or jurisdictions do not allow the exclusion or limitation of liability for consequential or incidental damages, this limitation may not apply to you.