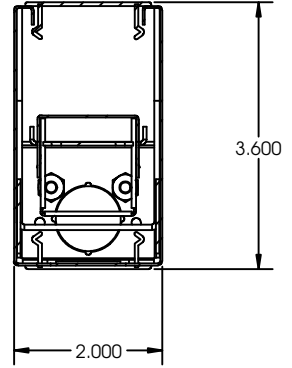




### DIMENSIONS

All dimensions are inches. Specifications subject to change without notice.



### ORDERING INFORMATION

#### 8 FT-UP and DOWN LIGHT

Example: 23WSF96LUR24WD48WDMV40KWH

<b>23W</b>	<b>SF</b>	<b>96L</b>	<b>UR24WD48W</b>	<b>DMV</b>	<b>40K</b>	<b>WH</b>	
<b>Series</b> 23P Pendant Mounted		<b>Length</b> 96L 96"	<b>Wattage &amp; Lumen</b> UR24WD48W Up Light 24 System Watts, Down Light 48 System Watts, 7200 Delivered Lumens UR36WD72W Up Light 36 System Watts, Down Light 72 System Watts, 10800 Delivered Lumens	<b>Driver</b> DMV 0-10V Dimming *Field installed-Dimming Wire DMVFID 0-10V Dimming *Factory installed-Dimming Wire	<b>Color Temperature</b> 30K 3000K 35K 3500K 40K 4000K 50K 5000K	<b>Finish</b> WH White BK Black SI Silver	<b>Configuration</b> Blank Individual -B Beginner Run -E Ender Run -J Joiner
<b>Lens Material</b> SF Snap In Frosted Acrylic Lens (85% transmission) Special for LEDs, Only available for uplight and downlight			<b>Options</b> HC301WH Cable kit with 4' Cable & 3 Wires Power Feed/Cable Incl. and White Canopy HC302WH Cable kit with 12' Cable & 3 Wires Power feed/Cable Incl. and White Canopy HC3015WWH Cable kit with 4' Cable & 5 Wires Power Feed/Cable Incl. and White Canopy HC3025WWH Cable kit with 12' Cable & 5 Wires Power feed/Cable Incl. and White Canopy 2SCS24WH Two Stem kits with 24" Stem, Canopy and Mounting hardware for a 4' fixture				

#### 8 FT-UP LIGHT ONLY or DOWN LIGHT ONLY

Example: 23PSF96LUR52W5200LDMV40KWH

<b>23P</b>	<b>SF</b>	<b>96L</b>	<b>U</b>	<b>R52W5200L</b>	<b>DMV</b>	<b>40K</b>	<b>WH</b>	
<b>Series</b> 23W Wall Mounted 23P Pendant Mounted 23R Recess Mounted, Flangeless 23RR 1/2" Recess Flanged For Before Drywall installation 23RF Flanged For Exiting Drywall installation		<b>Length</b> 96L 96"	<b>Direct/Indirect</b> U Up Light Only Blank Down Light Only	<b>Wattage &amp; Lumen</b> R52W5200L 52 System Watts, 5200 Delivered Lumens R76W7600L 76 System Watts, 7600 Delivered Lumens R90W9000L 90 System Watts, 9000 Delivered Lumens	<b>Driver</b> DMV 0-10V Dimming *Field installed-Dimming Wire DMVFID 0-10V Dimming *Factory installed-Dimming Wire	<b>Color Temperature</b> 30K 3000K 35K 3500K 40K 4000K 50K 5000K	<b>Finish</b> WH White BK Black SI Silver	<b>Configuration</b> Blank Individual -B Beginner Run -E Ender Run -J Joiner
<b>Lens Material</b> SF Snap In Frosted Acrylic Lens (85% transmission) Special for LEDs, Only available for uplight and downlight			<b>Options</b> HC301WH Cable kit with 4' Cable & 3 Wires Power Feed/Cable Incl. and White Canopy HC302WH Cable kit with 12' Cable & 3 Wires Power feed/Cable Incl. and White Canopy HC3015WWH Cable kit with 4' Cable & 5 Wires Power Feed/Cable Incl. and White Canopy HC3025WWH Cable kit with 12' Cable & 5 Wires Power feed/Cable Incl. and White Canopy 2SCS24WH Two Stem kits with 24" Stem, Canopy and Mounting hardware for a 4' fixture					

\*23R-Designed for standard 1" grid. Consult factory for custom made grid size.

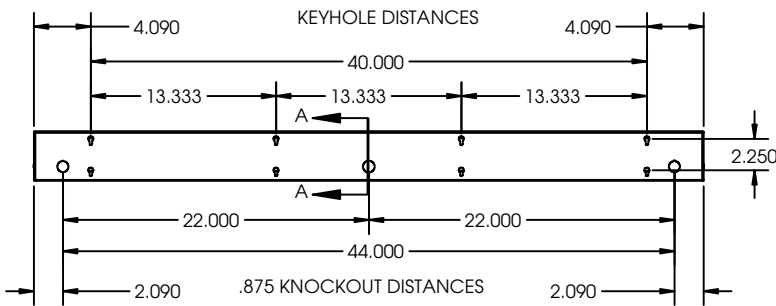
Catalog Number:
Notes:

## Dimensions

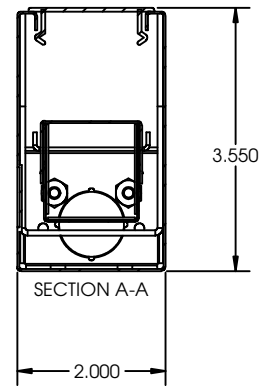
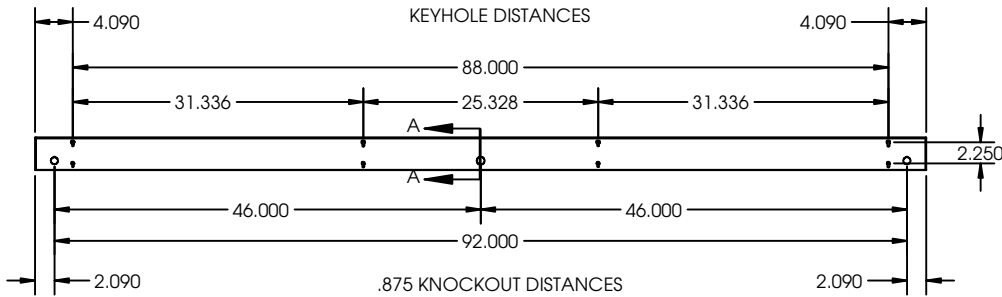
All dimensions are inches. Specifications subject to change without notice



### WALL MOUNT 48L Drawing



### WALL MOUNT 96L Drawing



\*Consult factory for more options.

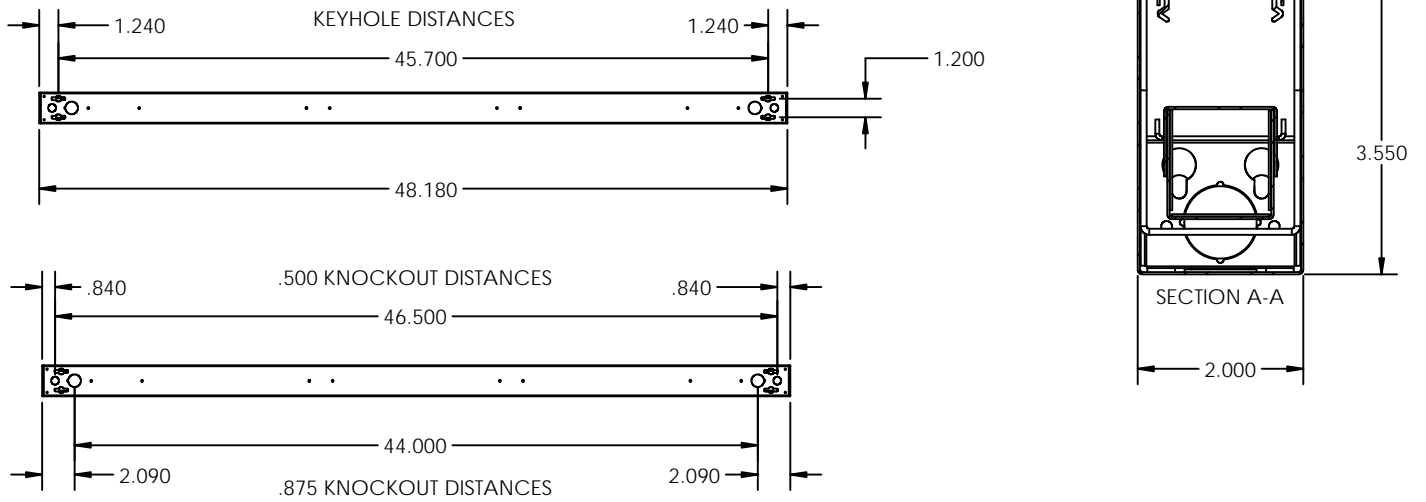
**Plug in system Options** - it's for continuous run application by simply plugging in sections together

Part Number	Descriptions
PI1	3 Wires Harness, Including White, Black and Green
PI2	4 Wires Harness, Including White, Black, Green and Blue for Emergency Battery Backup
PI3D	5 Wires Harness, Including White, Black, Green, Violet and Gray

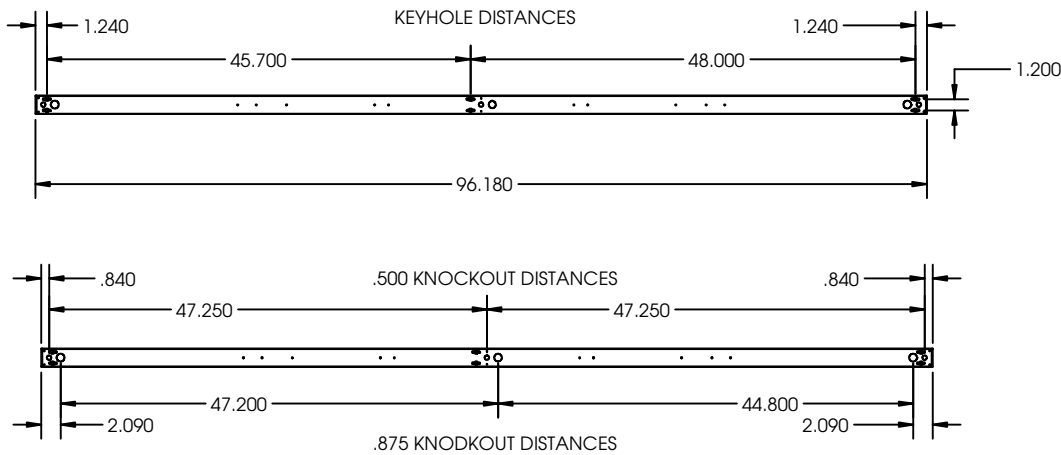
\* Add the accessories part numbers at the end to be factory installed

Catalog Number:
Notes:

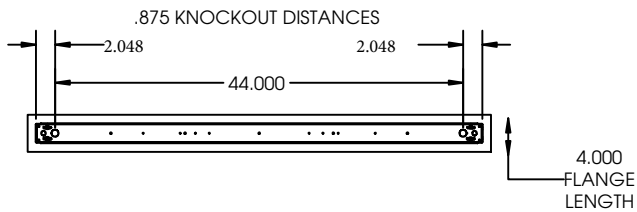
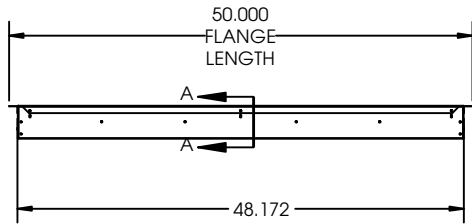
## PENDANT/SURFACE MOUNT 48L Drawing



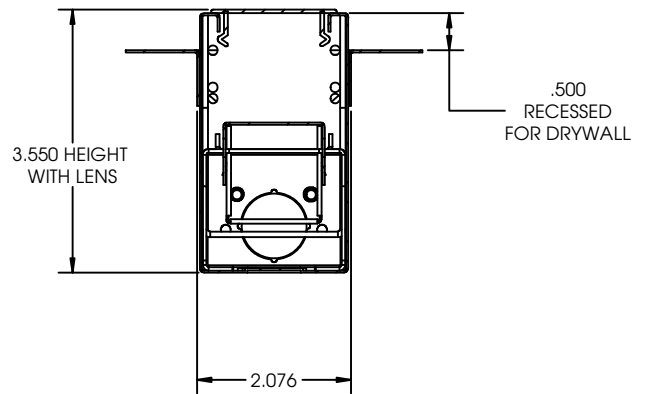
## PENDANT/SURFACE MOUNT 96L Drawing



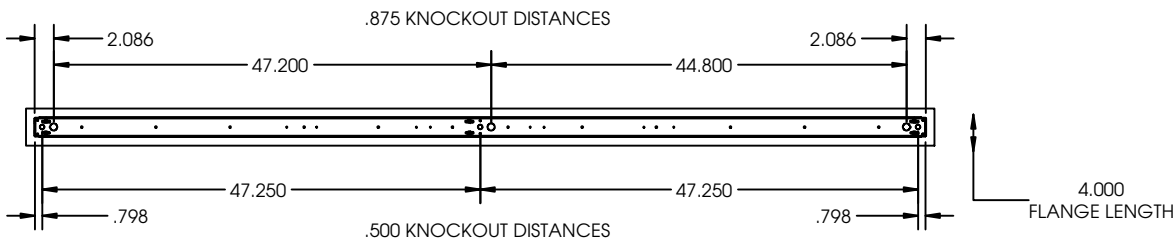
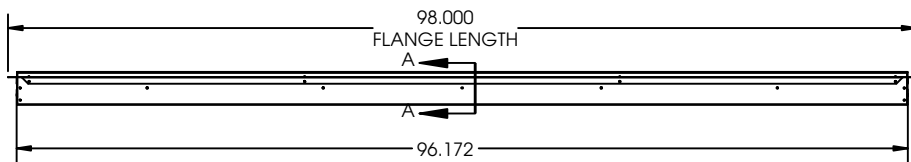
### RECESSED MOUNT (RF) 48L Drawing



### FLUSH FLANGE RECESS Recessed Mount (RF)



### RECESSED MOUNT(RR) 96L Drawing



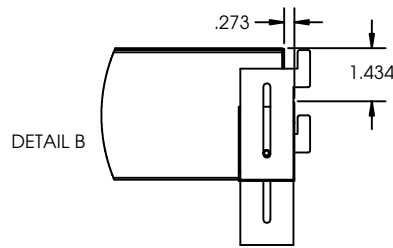
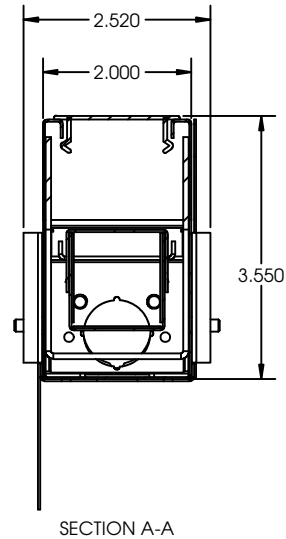
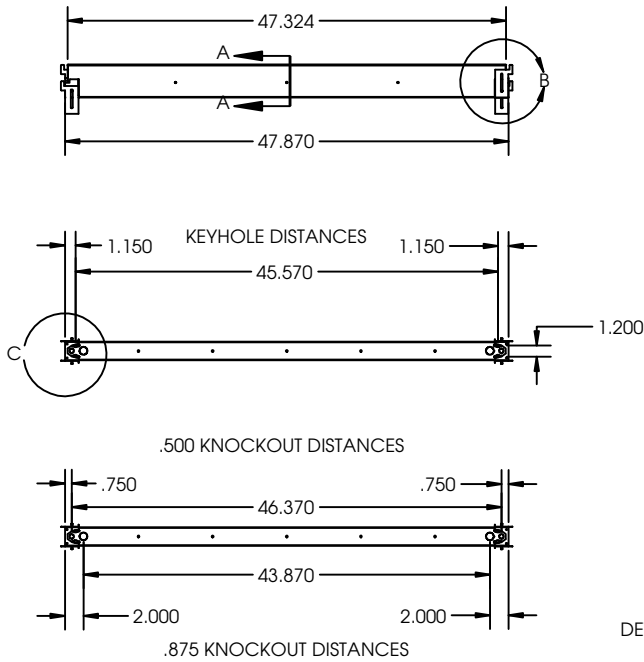
### RECESS FOR DRY WALL Recessed Mount (RR)

\*consult factory for custom flange depth

Catalog Number:
Notes:

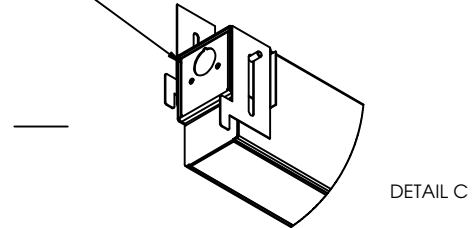
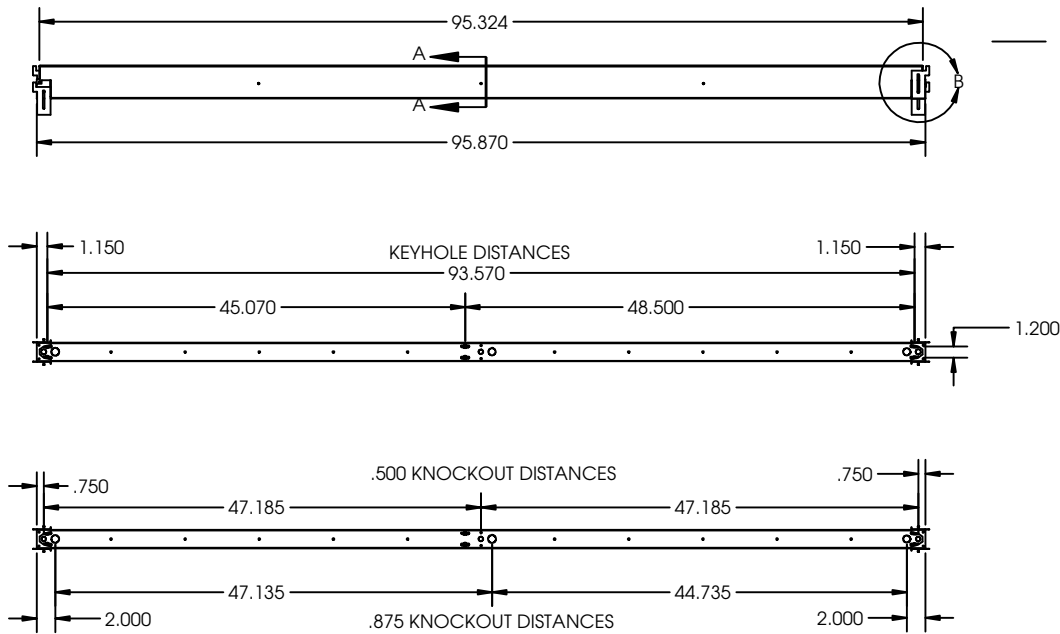
## Recessed Mount for T-Bar Ceiling

### RECESSED MOUNT (R) 48L Drawing



END BRACKET DESIGNED TO SIT OVER VARIOUS SIZED GRID

### RECESSED MOUNT (R) 96L Drawing



Catalog Number:
Notes:

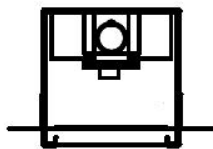
## Dimensions

All dimensions are inches. Specifications subject to change without notice



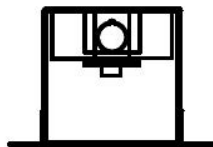
## Flange Details

Type RR  
Recess for Drywall/  
Hard Ceiling  
-RR (1/2 inch)  
-RR650 (5/8 inch)  
-RRxxx (custom depth)



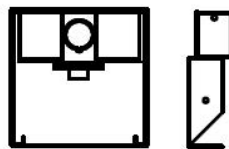
Flangeless  
Appearance

Type RF  
Flush for Drywall



Flanged  
Appearance

Type R  
For 1" T-bar



Flangeless

\*23R-Designed for standard 1" grid. Consult factory for custom made grid size.

Catalog Number:

Notes: