



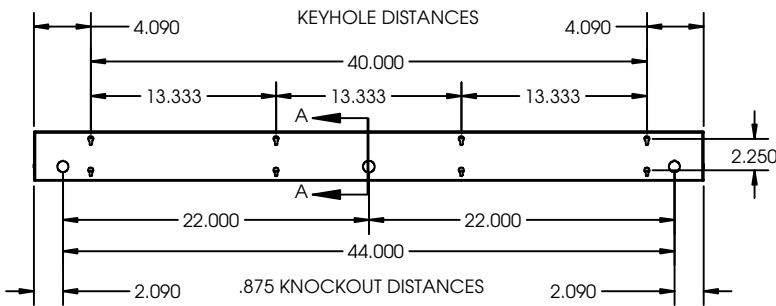


## Dimensions

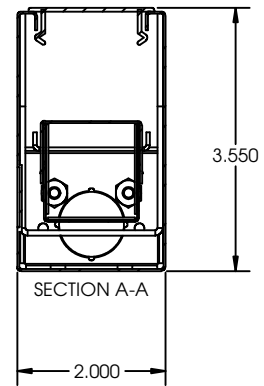
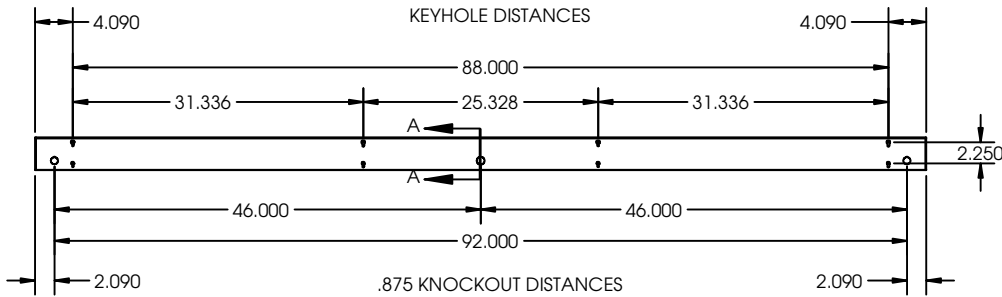
All dimensions are inches. Specifications subject to change without notice



### WALL MOUNT 48L Drawing



### WALL MOUNT 96L Drawing



\*Consult factory for more options.

**Plug in system Options** - it's for continuous run application by simply plugging in sections together

Part Number	Descriptions
PI1	3 Wires Harness, Including White, Black and Green
PI2	4 Wires Harness, Including White, Black, Green and Blue for Emergency Battery Backup
PI3D	5 Wires Harness, Including White, Black, Green, Violet and Gray

\* Add the accessories part numbers at the end to be factory installed

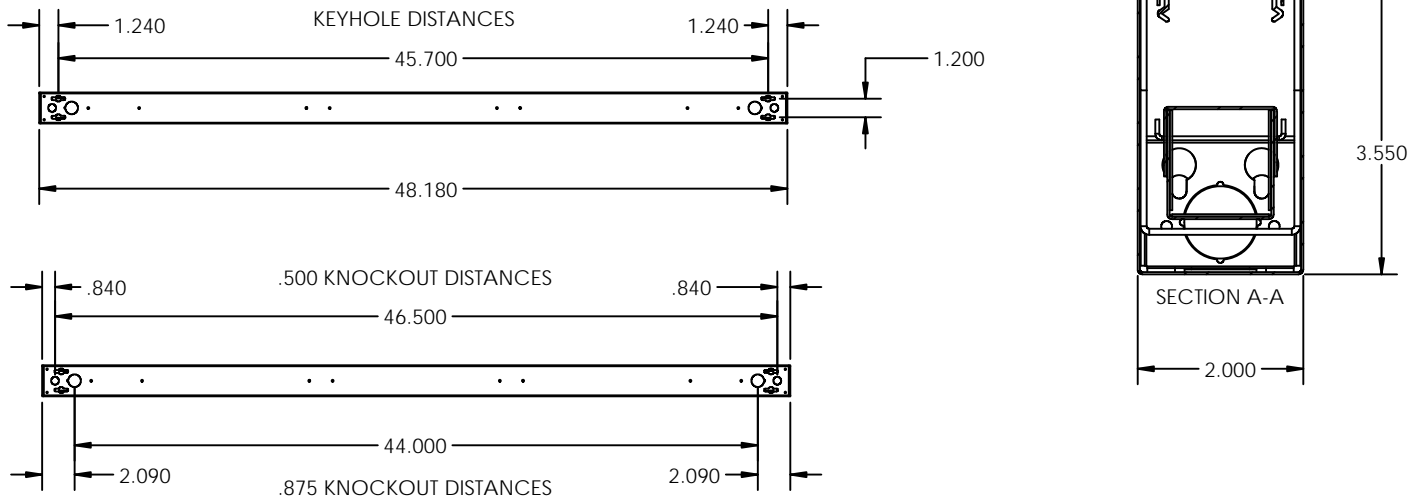
Catalog Number:
Notes:



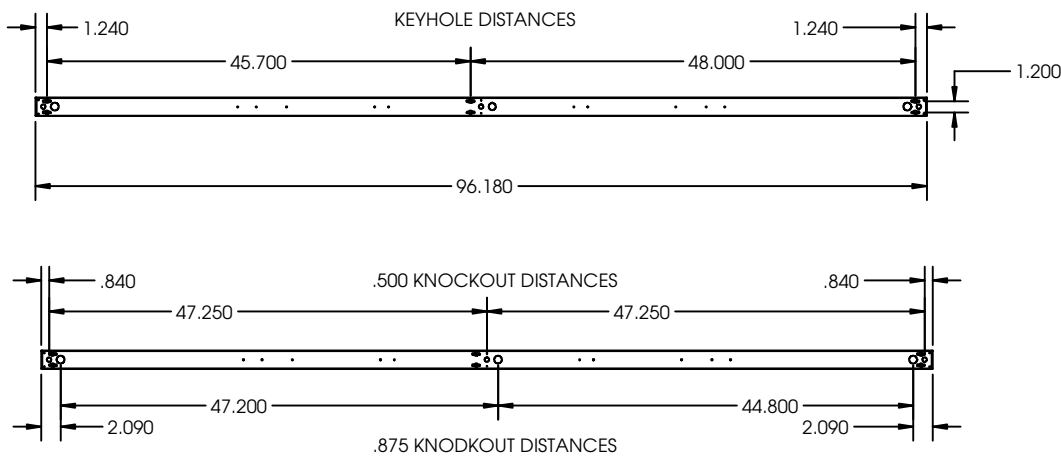
# 23 Series

Direct/Indirect  
Wall Mount/ Surface Mount Linear Fixture

## PENDANT/SURFACE MOUNT 48L Drawing

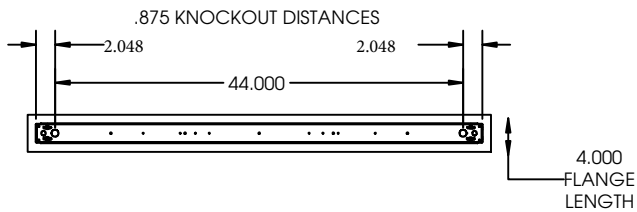
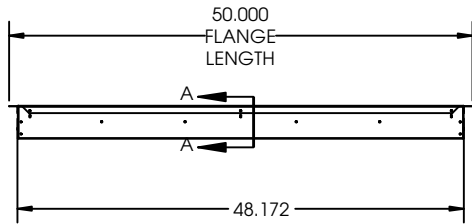


## PENDANT/SURFACE MOUNT 96L Drawing

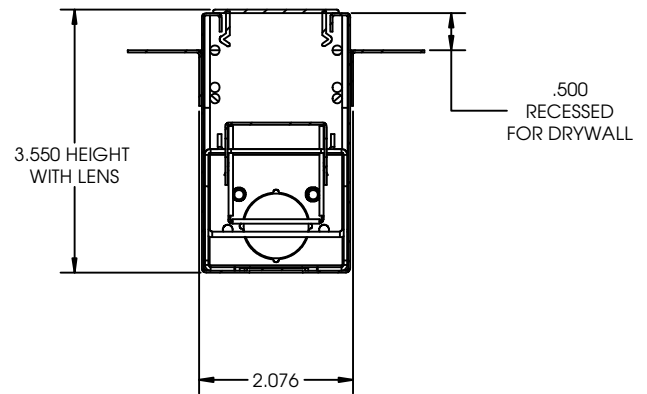


Catalog Number:
Notes:

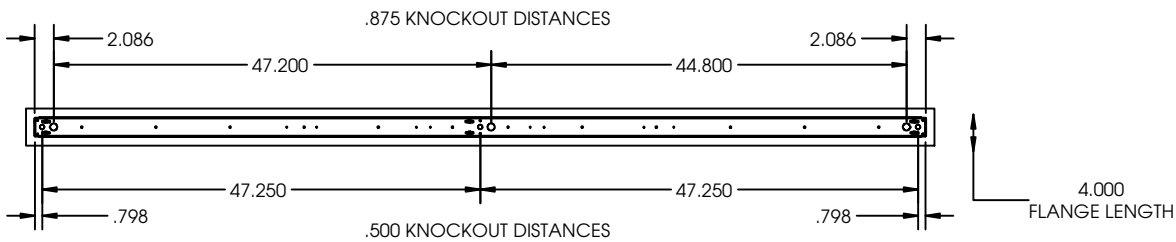
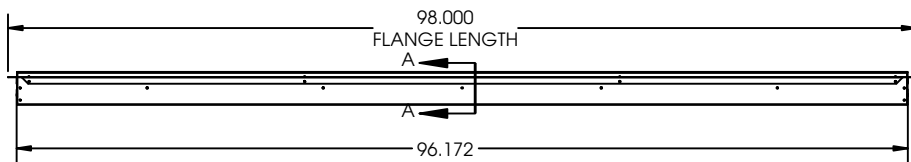
#### RECESSED MOUNT (RF) 48L Drawing



#### FLUSH FLANGE RECESS Recessed Mount (RF)



#### RECESSED MOUNT(RR) 96L Drawing



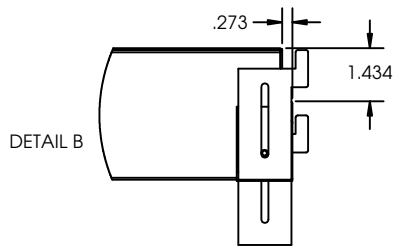
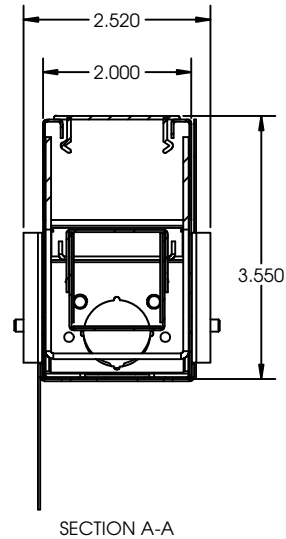
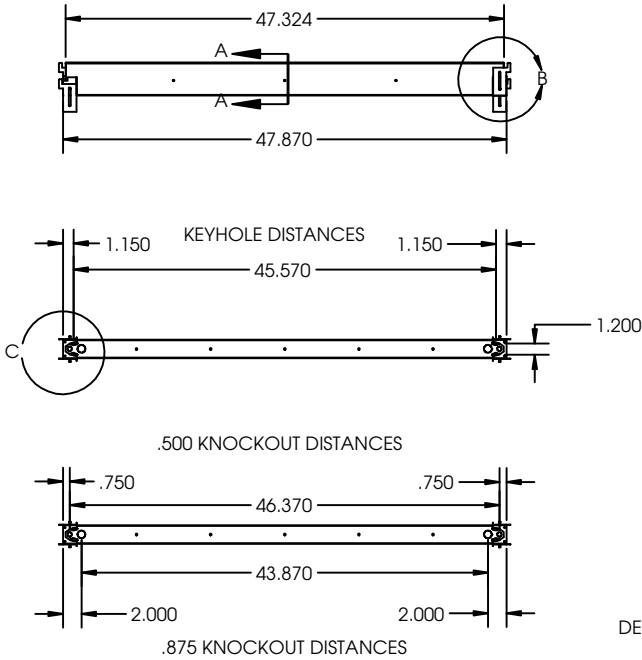
#### RECESS FOR DRY WALL Recessed Mount (RR)

\*consult factory for custom flange depth

Catalog Number:
Notes:

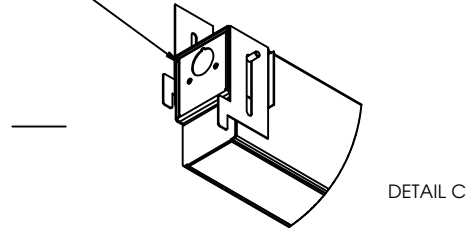
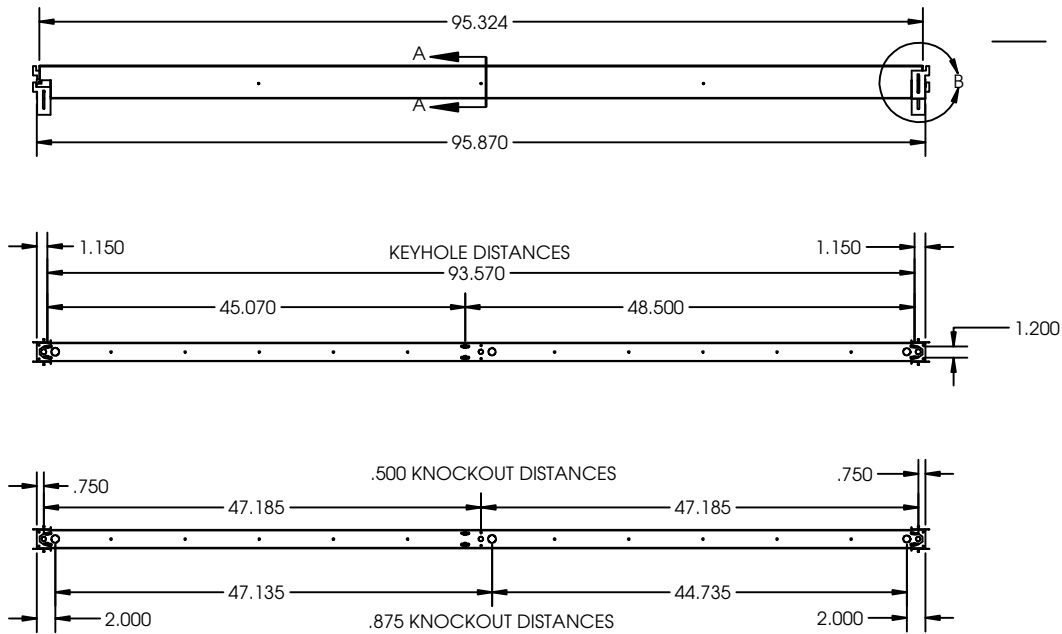
## Recessed Mount for T-Bar Ceiling

### RECESSED MOUNT (R) 48L Drawing



END BRACKET DESIGNED TO SIT OVER VARIOUS SIZED GRID

### RECESSED MOUNT (R) 96L Drawing



Catalog Number:
Notes:

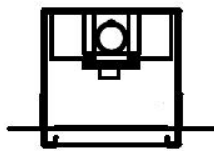
## Dimensions

All dimensions are inches. Specifications subject to change without notice



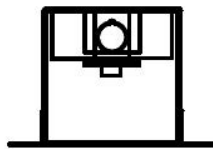
## Flange Details

Type RR  
Recess for Drywall/  
Hard Ceiling  
-RR (1/2 inch)  
-RR650 (5/8 inch)  
-RRxxx (custom depth)



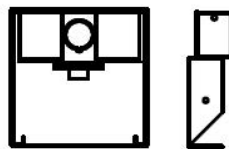
Flangeless  
Appearance

Type RF  
Flush for Drywall



Flanged  
Appearance

Type R  
For 1" T-bar



Flangeless

\*23R-Designed for standard 1" grid. Consult factory for custom made grid size.

Catalog Number:

Notes: