

Series CLLLSG

FIXED LED Linear Lighting Channel

PLT introduces an eye-catching selection of LED Linear Lighting channels that can be surface or pendant mounted individually or with unmatched styling and energy efficiency. Utilizing the latest in LED High Powered Lighting sized exactly to the specific channel provides micro-illumination that will not only highlight the area around it beautifully but say "look here". Ideal for general lighting applications in both commercial and residential applications for circulation spaces, high impact areas and residentially over tables, kitchen islands and home offices. The versatility and clean styling makes this an ideal choice in many applications. Suitable for dry and damp locations.

Our brand new All-In-One LED Linear Channel is new and improved to provide the easiest channel in the industry to specify, order and install. This integral driver channel in two different profiles provides the ideal solution for both individual fixtures (in 4 or 8ft), and to join multiple channels for longer, continuous runs (in 4 or 8ft multiples). This beautifully finished aluminum channel is so easy to install that the "do-it-yourselfer" can install in minutes and professional installers will appreciate not only the reduction in cost, but also the speed in which installation can be completed. A specially designed integral wiring harness (ordered separately) makes joining two channels electronically simple and efficient. A unique, mechanical joiner bracket in conjunction with our special joiner tool allows for joining two or more channels together with no light leak and a clean connection.

CONSTRUCTION

Anodized Aluminum Channel is lightweight, small dimensions and dissipates heat well, designed especially for the flexible LED Tape. Highly tooled plastic end caps screw onto the aluminum channel and protect the channel and LED tape from dust and keep the LED Tape clean and in optimum condition. A raceway in the back of the channel provides both a heat sink for the LED Tape and a holder for screws to pendant mount the channels. The channels can be suspended or flush mounted with optional clips. Snap-in flush frosted lens is specially formulated for smooth illumination of the LED Tape.



DIMENSIONS

CLLLSF

48L - 47.64"L x 2.16"W x 2.75"H

96L - 94.88"L x 2.16"W x 2.75"H

CLLLSG

48L - 47.64"L x 3.54"W x 3.38"H

96L - 94.46"L x 3.54"W x 3.38"H

FEATURES & BENEFITS

- Suspended or flush mounted
- Suitable for individual or continuous run installations
- Max run 48ft with main power supply
- Easy installation
- Innovative anti-lightlead clips in the space between diffuser and end-cap
- Aluminum channel
- Integral driver, snap-fit lens
- Integral wire harness
- Magnetic light leak block
- Life >50,000 hours
- Operating temperature -20°C to 55°C
- 0-10 Volt dimmable 120-277V
- CRI >80
- Suitable for dry and damp locations

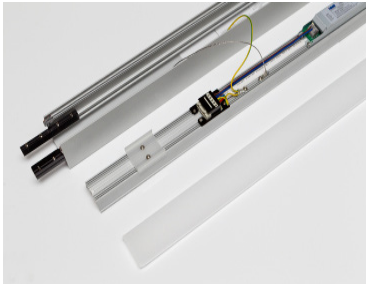


CATALOG#: _____
 PROJECT: _____
 TYPE: _____

Series CLLLSG

Fixed LED Linear
 Lighting Channel

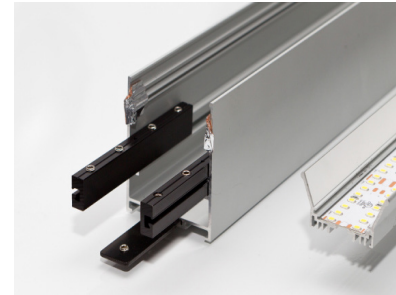
DRAWINGS & IMAGES



Three-part system allows for easy wiring with prewired harnesses and allows for custom finishes on channel

Features Include:

- Aluminum Channel
- Integral Driver
- Snap Fit Lens
- Magnetic Light Leak Block
- Integral Wire Harness



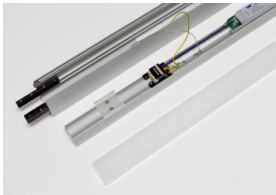
Joins easily with a mechanical spline

Pendant Mounted

Surface Mounted

	Length	Preconfigured Kit Part No.	Description	Preconfigured Kit Part No.
LLLSF-2.2"Wx2.8"H	4'	CLLLSF-48L30W-DMV-30K-SA-HC605WH	2.2"W x 2.8"H x 4'L 30 Watt 3000K	CLLLSF-48L30W-DMV-30K-SA-SURF
	8'	CLLLSF-96L60W-DMV-30K-SA-HC605WH	2.2"W x 2.8"H x 8'L 60 Watt 3000K	CLLLSF-96L60W-DMV-30K-SA-SURF
	12'	CLLLSF-144L90W-DMV-30K-SA-HC605WH	2.2"W x 2.8"H x 12'L 90 Watt 3000K	CLLLSF-144L90W-DMV-30K-SA-SURF
	16'	CLLLSF-192L120W-DMV-30K-SA-HC605WH	2.2"W x 2.8"H x 16'L 120 Watt 3000K	CLLLSF-192L120W-DMV-30K-SA-SURF
LLLSG-3.5"Wx3.5"H	4'	CLLLSG-48L48W-DMV-30K-SA-HC605WH	3.5"W x 3.3"H x 4'L 48 Watt 3000K	CLLLSG-48L48W-DMV-30K-SA-SURF
	8'	CLLLSG-96L96W-DMV-30K-SA-HC605WH	3.5"W x 3.3"H x 8'L 96 Watt 3000K	CLLLSG-96L96W-DMV-30K-SA-SURF
	12'	CLLLSG-144L144W-DMV-30K-SA-HC605WH	3.5"W x 3.3"H x 12'L 144 Watt 3000K	CLLLSG-144L144W-DMV-30K-SA-SURF
	16'	CLLLSG-192L192W-DMV-30K-SA-HC605WH	3.5"W x 3.3"H x 16'L 192 Watt 3000K	CLLLSG-192L192W-DMV-30K-SA-SURF

Mounting Accessories (order separately)



Hanging kit: included canopy and power feed (HC605WH)



Non Power Feed Side (HC605WHNPF)



Joiner Tool (LLLSFJOINERTOOL)



Lens Tool (LLLSFLENSTOOL)



CATALOG# : _____
 PROJECT : _____
 TYPE : _____

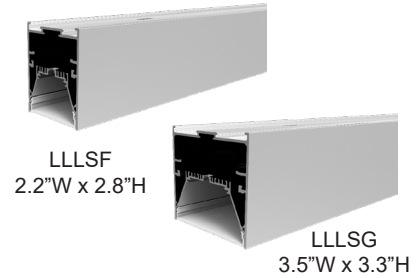
Series CLLLSG

Fixed LED Linear
Lighting Channel

COMPONENT ORDERING INFORMATION

ITEM NO	DESCRIPTION
LLLSF - Aluminum Channel 2.2"W x (48"L or 96"L) x 2,8"H	
LLLSF48L30W3000LDMV40KSA	30W 3000L, 4000K 0-10V Dimming Multi-volt
LLLSF96L60W6000LDMV40KSA	60W 6000L, 4000K 0-10V Dimming Multi-volt
LLLSG - Aluminum Channel 3.5"W x (48"L or 96"L) x 3.3"H	
LLLSG48L48W5040LDMV40KSA	48W 5040L, 4000K 0-10V Dimming Multi-volt
LLLSG96L96W10080LDMV40KSA	96W 10080L, 4000K 0-10V Dimming Multi-volt

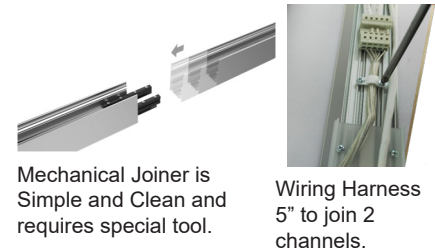
Change 40K to 30K for 3000K



JOIN TWO OR MORE CHANNELS TOGETHER

ITEM NO	DESCRIPTION
LLLSFJOINER	Mechanical Joiner to Join 2 CLLLSF Channels
LLLSGJOINER	Mechanical Joiner to Join 2 CLLLSG Channels
LLLSGJOINERTOOL	Tool Required to Use Mechanical Joiner (1 per installation)
LLLSFLENSTOOL	Tool Required to Remove Lens; 1 per installation needed
LLLSF5WMFH*	Wiring Harness 5" to Join 2 Channels

*Included with Channels only need to purchase for replacements



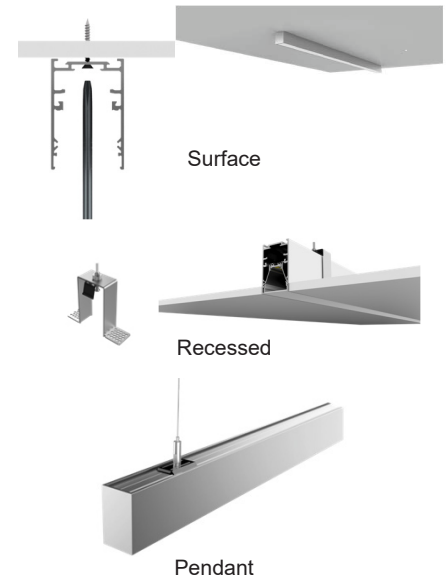
Mechanical Joiner is Simple and Clean and requires special tool.

Wiring Harness 5" to join 2 channels.

JOIN TWO OR MORE CHANNELS TOGETHER

ITEM NO	DESCRIPTION
LLLSFSURFKIT	Surface Mount Screw and Toggle Set of 3 (includes 24" power cord)
LLLSFRECKIT*	Recessed Mounting Brackets for LLLSF (Set of 2) (Includes 24" power cord)
LLLSGRECKIT*	Recessed Mounting Brackets for LLLSG (Set of 2) (Includes 24" power cord)
LLLSFHCPF605WWH**	Pendant Mounting Power Feed Canopy Kit 5 Wire for up to 6FT Drop
LLLSFHCPF6125WWH**	Pendant Mounting Power Feed Canopy Kit 5 Wire for up to 12FT Drop
LLLSFHCPNF605WWH	Pendant Mounting Non-Power Canopy Kit, 6FT Cable w/Canopy
LLLSFHCPNF612WWH	Pendant Mounting Non-Power Canopy Kit, 12FT Cable w/Canopy

**Use one Power Feed Canopy Kit every place mounting to Power.
 Non-power Feed Version Order Separately for mounting where No Power Feed is Required.



We reserve the right to change design, materials, LED's and finish in any way that will not alter installed appearance or reduce function and performance.