

## INSTALLATION INSTRUCTIONS

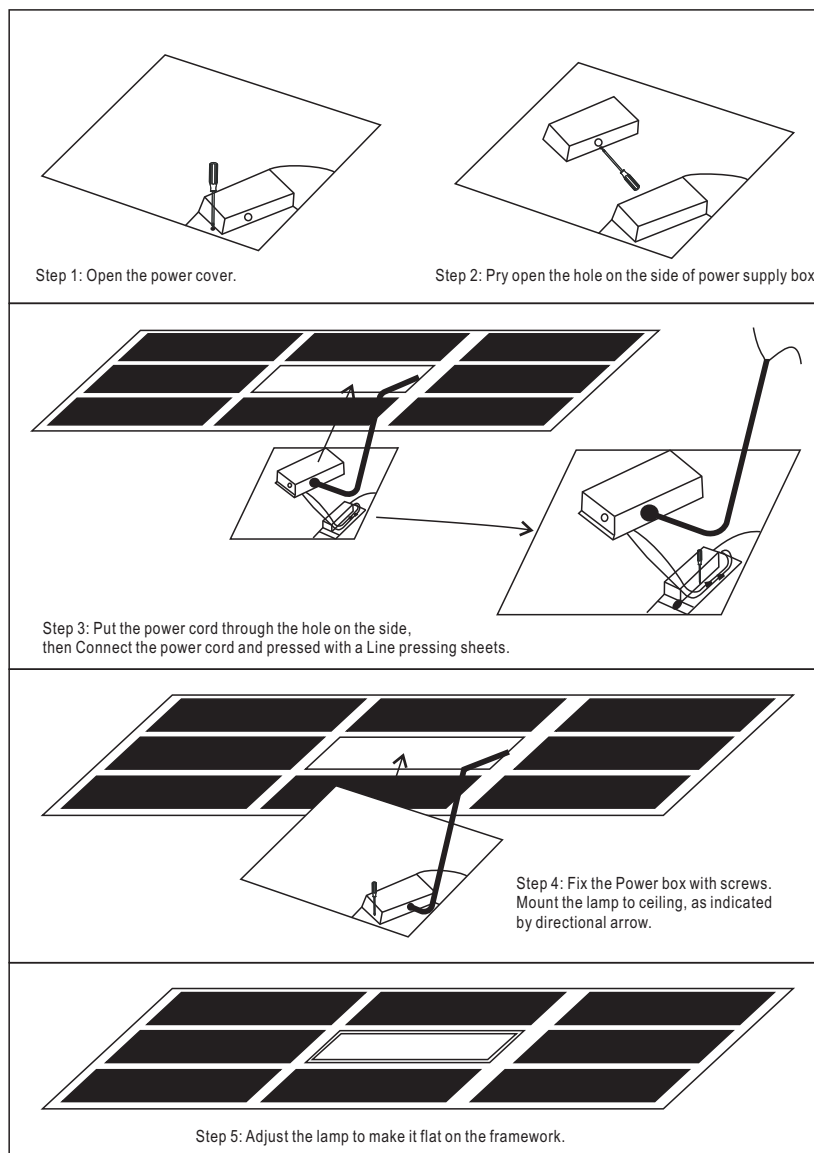
Please read this installation instruction manual carefully to avoid rework complications and safety concerns.

### Technical Glossary:

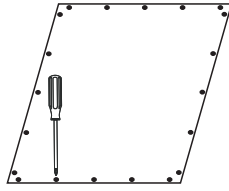
Type	Rated voltage (V)	Current (mA)	Rated wattage(W)
PLT-11231 (2x2FT)	AC 120-277V	Max 420mA	40W

This product is dimmable on an 0-10V dimmer.

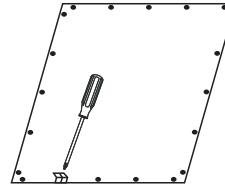
### Embedded installation:



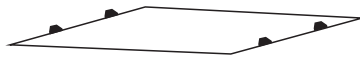
## Fixed Installation:



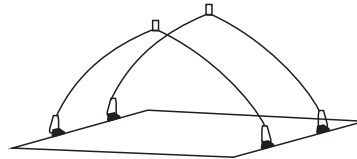
Step 1: Open the screws on the back.



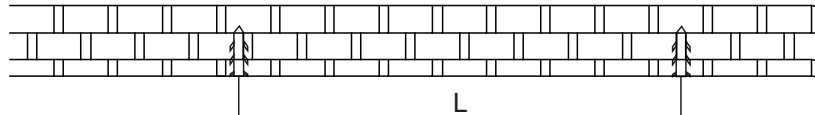
Step 2: Mount Hanging bracket.



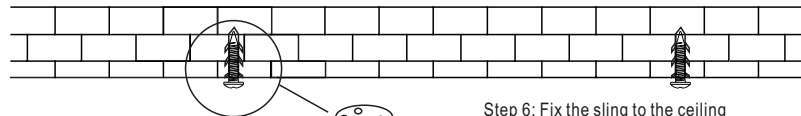
Step 3: Mount Hanging bracket symmetrically on four sides.



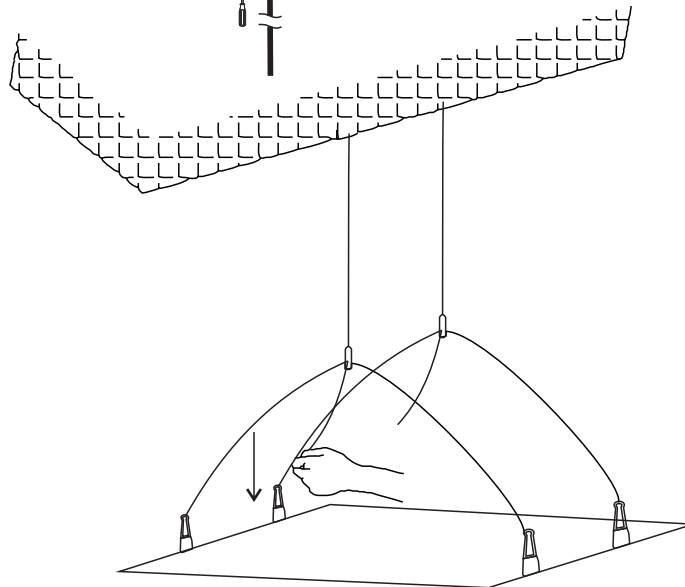
Step 4: Installation sling.



Step 5: Fix a Plastic expansion to the wall, spacing to the panel hanging bracket as a reference.



Step 6: Fix the sling to the ceiling with a self-tapping screws



Step 7: Adjust the sling make the panel parallel to the ceiling.

### Safety Note:

1. Please do not connect the lamp to the mains voltage until installation is completed.
2. Pay attention to the direction of the terminals.
3. If the external flex cable or cord is damaged, it may only be replaced by the manufacturer or an certified service agent or a similarly qualified technician in order to avoid potential hazards.
4. The light source of this luminaire is not replaceable, when the light source reaches its end of life the whole luminaire shall be replaced
5. The light is indoor used only