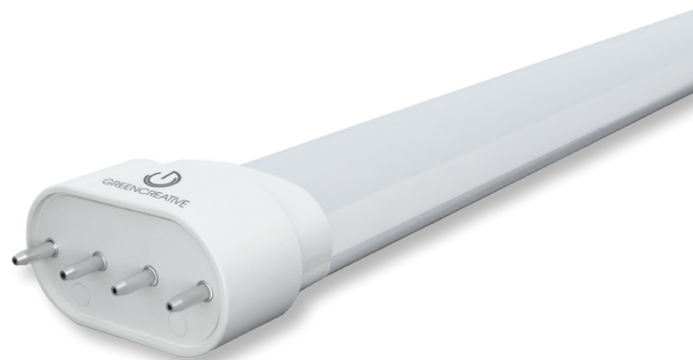


## Model: PLL 17W DIR

Where xxx means 824-965 which indicates CRI and color temperature



### DIMMER COMPATIBILITY 0 - 10V

Brand	Series	Model	Load	Ballast		
				Philips		
				IZT 2S26-M5-BS	IZT-2T42-M5-LD	IZT-2TTS40-SC
Legrand	Harmony	H4FBL3P	1200W	X	X	X
	Adorne	ADPD4FBL3P2	700W	OK	OK	X
Leviton	Illumatech	IP710-DLZ	1200W	X	OK	X
Lutron	Diva	DVTV	960W	X	X	X

\*GREEN CREATIVE has provided this dimmer compatibility chart for guidance when selecting a ballast, dimmer and lamp combination. Lamps were tested for compatibility with the above listed ballasts and dimmers. Ballasts and dimmers that do not appear on the chart might still be compatible but have not been tested. All testing has been performed with a stable main supply. The quality of the local main, existing installation and wiring, as well as different manufacturer versions of the above ballasts may affect lamp performance. Since no assurance can be provided regarding these factors, it is a general recommendation to perform a test on-site prior to installing the LED lamps.