



## FEATURES

- Mounting Height: 20 meters/65 feet
- System Light Efficacy 81 LPW
- Easy Installation & Maintenance
- IP65
- Five Years Warranty
- ETL, DLC(5000K Only)
- Optional Shade Included for Field Installation



**50% ENERGY EFFICIENCY & LONG LIFE**  
60% MORE ENERGY EFFICIENT THAN STANDARD HID LAMPS  
TYPICAL PAYBACK OF 1 - 3 YEARS

SKU #	Kelvin	Lumens	CRI	Wattage	Voltage	DLC?	Mounting	Life Hours	Warranty
PLT-10309	5000	20000	80	200	100-277	YES	CHAIN	70,000	5 years

## ADDITIONAL PHOTOS



## FEATURES

- Easy Installation & Maintenance
- System Light Efficacy 81 LPW
- Linear Design

## TYPICAL APPLICATIONS

- Warehouse, Retail, Gymnasiums
- Convention Centers, Sport Arenas

## WARRANTY

WARRANTY

5 Years

## SPECIFICATIONS

### PERFORMANCE

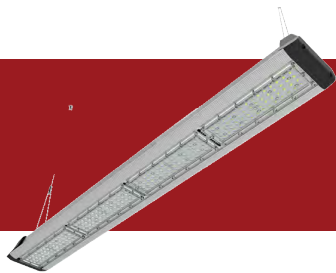
Osram LED Chip  
 20000 Lumen Output (IES)  
 200W Power Consumption  
 >100 lm/W Efficacy (IES)  
 5000K Color Temperature  
 ≥80 CRI  
 L70>70,000 hours Lumen Maintenance  
 100-277 VAC Input Voltage  
 0.95 minimum Power Factor

### ENVIRONMENTAL

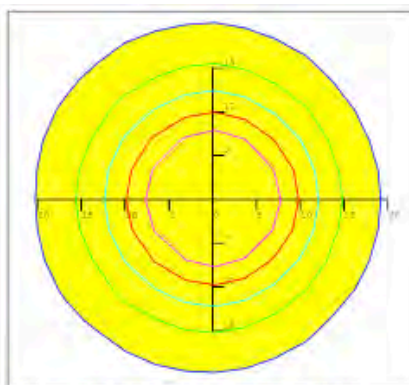
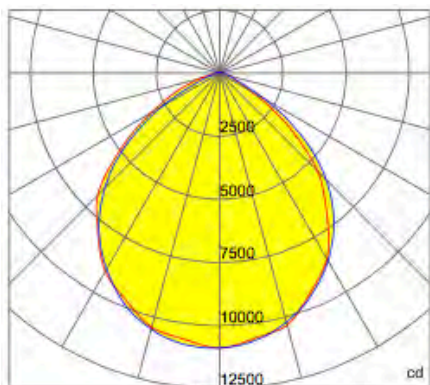
IP65 IP Rating  
 -30 to 45°C Operating Temperature  
 -40 to 80°C Storing Temperature  
 Humidity

### PHYSICAL

Dimensions (1240 x 159 x 160mm)  
 Weight 8.2 kg  
 Chain & Surface Mounting Options  
 Fixture Material Aluminum Alloy



## PHOTOMETRICS



Mounting Height 20m, 0 Tilt,  
50LUX-5LUX

Illumination-90 Degree Beaming Angle		
Height	Beam Diameter	LUX
7m	φ 19m	135LUX
8m	φ 23m	105LUX
9m	φ 24m	84LUX
10m	φ 28m	68LUX
11m	φ 31m	31LUX