



CITY OF CHICAGO APPROVED EXIT LIGHTING & SIGNAGE

When trouble strikes, people don't think about lighting technology — they just want to get to safety. Fulham has developed lighting systems specifically for Chicago to perform reliably when you need them most.

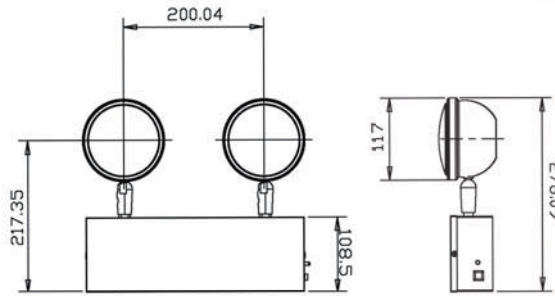
- Damp Location Rated
- Ultra-bright performance
- Designed to strict Chicago specifications
- LED light source for long life & low power consumption



CHICAGO-APPROVED EMERGENCY LIGHT (FHCH10)

Steel emergency light designed for new construction or retrofit applications that must meet all City of Chicago listing requirements. Ideal for wall-mounted applications in stores, offices, hospitals and schools.

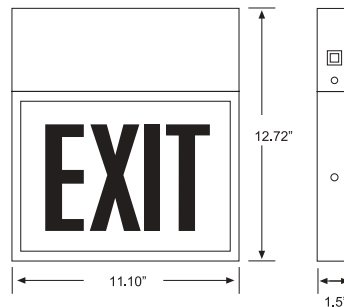
- Heavy-duty steel housing
- Glass lenses on lamp heads
- 12W high intensity tungsten halogen lamps
- Sealed push-to-test switch and ready light
- 6V 24W Maintenance-free sealed lead acid battery
- Dual voltage input 120/277V
- AC lockout -line latching circuit
- Auto-brown-out capability
- 120 minute emergency operations
- UL 924 listed
- Damp location listed
- NEC



CHICAGO-APPROVED EXIT SIGN (FHCH20)

Heavy duty steel exit signs are Chicago approved. Ideal for applications such as schools, offices, retail and hospitals.

- 20 gauge steel housing
- White finish
- Universal mounting (top, end or side) - steel canopy included
- Red silk-screened lettering on white phosphorescent
- Heat tempered, impact resistant glass lens
- Dual-voltage input 120V or 277V AC operation
- Maintenance-free sealed nickel cadmium battery provides 90 minutes of emergency power
- UL 924 listed
- Damp Location listed
- NEC



Faces	Directional	Operation
S = Single	LA = Left Arrow	AC = AC only
D = Dual	RA = Right Arrow	EM = Battery Back Up
	DA = Double Arrow	
	NA = No Arrow	