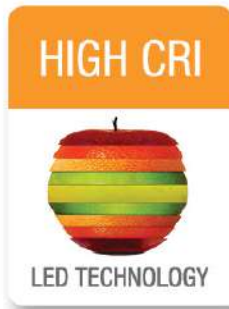


MR16 7W HIGH CRI TITANIUM LED CRI^{SP} SERIES 3.0



7W REPLACES



45W Hal.

80% Energy Savings

CRI^{SP}



\$144 Savings per lamp*

- ⌚ Exceptional color rendering CRI 95
- ⌚ Richer reds and natural skin tones (R9 95, R13 95)
- ⌚ Crisp colors for retail, galleries, museums, and food
- ⌚ High efficacy 66 LPW in Warm White
- ⌚ UL certified Class 1 & 2
- ⌚ Narrow Flood / Flood beam angles



LM 79

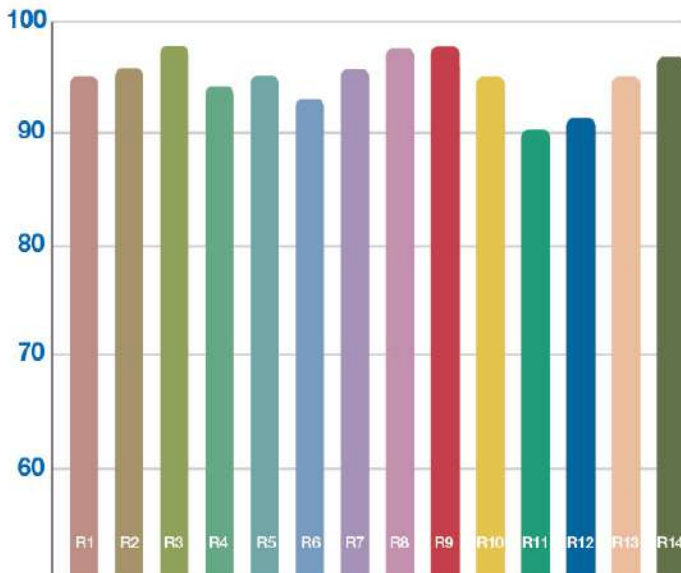
LM 80

TM 21



COLOR RENDERING INDEX

CRI Values R1-R14



The CRI^{SP} SERIES MR16 7W High CRI lamp features the latest in color rendering LED technology. With a typical CRI 95, R9 95, and R13 95, this high-performance lamp provides crisp and vibrant colors across the whole spectrum.

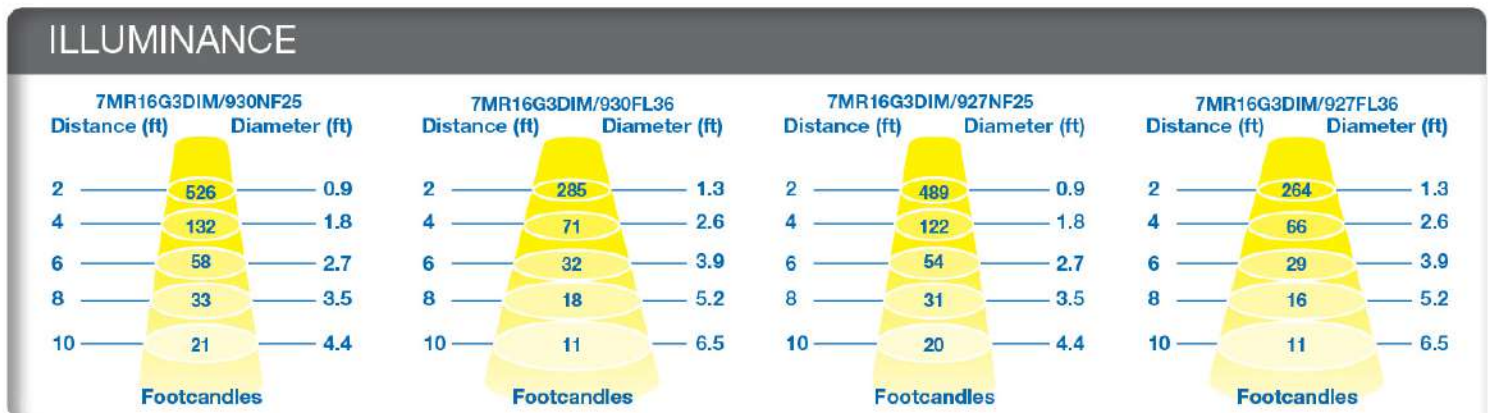
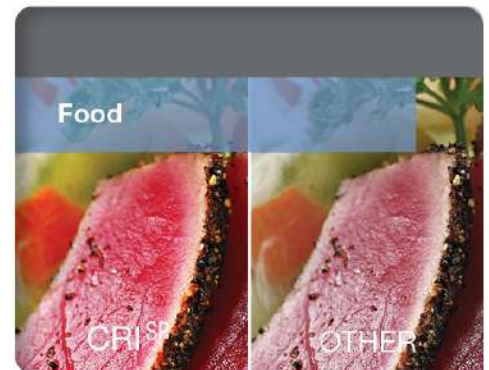
CRI is calculated by taking the average value from colors R1-R8. So while some LEDs may claim to have a high CRI, they may do a poor job portraying other key colors like R9 (reds) and R13 (skin tones).

The CRI^{SP} SERIES MR16's exceptional R9-R14 values provide redder reds, natural looking skin tones, and whiter whites. This lamp is an ideal choice for illuminating merchandise, art, and food. Get the most out of your colors with this energy efficient lighting solution.

Simply install and turn ON the color.

Lighting facts Per Bulb, Brightness 465, 420 lumens
 Estimated Yearly Energy Cost \$0.84
 (Based on 3 hrs/day, 11 ¢/kWh. Cost depends on rates and use)
 Life 27.4 years (Based on 3 hrs/day), Energy Used 7 watts
 Light Appearance 3000K, 2700K

MR16 7W HIGH CRI TITANIUM LED CRI^{SP} SERIES 3.0



SPECIFICATIONS

Product Model	95352 7MR16G3DIM/930NF25 01-721-D/930-25D	95353 7MR16G3DIM/930FL36 01-721-D/930-36D	95350 7MR16G3DIM/927NF25 01-721-D/927-25D	95351 7MR16G3DIM/927FL36 01-721-D/927-36D
Type	MR16	MR16	MR16	MR16
Base	Bi-pin GU5.3	Bi-pin GU5.3	Bi-pin GU5.3	Bi-pin GU5.3
Power (W)	7	7	7	7
Voltage - Frequency	12V 60Hz	12V 60Hz	12V 60Hz	12V 60Hz
Color Temp. (ANSI)	Warm White 3000K	Warm White 3000K	Warm White 2700K	Warm White 2700K
CRI (Ra) (typ.)	95	95	95	95
R9 / R13 (typ.)	95	95	95	95
Typical lumens (lm)	465	465	420	420
Efficacy (LPW)	66	66	60	60
Beam Angle	NF25°	FL36°	NF25°	FL36°
CBCP (cd)	2105	1140	1955	1055
Dimmable	Yes**	Yes**	Yes**	Yes**
Power Factor	0.9	0.9	0.9	0.9
Rated Lifetime - L70 (hrs.)	30,000	30,000	30,000	30,000
Dia. x MOL	1.97"x1.87" (50x48mm)	1.97"x1.87" (50x48mm)	1.97"x1.87" (50x48mm)	1.97"x1.87" (50x48mm)
Weight (lb. / g)	0.12lb. / 55g	0.12lb. / 55g	0.12lb. / 55g	0.12lb. / 55g

* Savings per lamp based on \$0.11 / kw energy cost, 12 hrs / day lamp usage, \$4 halogen with 1000 hr lifetime, \$35 LED with 30,000 hr lifetime - ** List of tested dimmer switches and transformers on our website - *** Not intended for use in totally enclosed fixtures - **** Suitable for damp locations. Not for use where directly exposed to weather or water