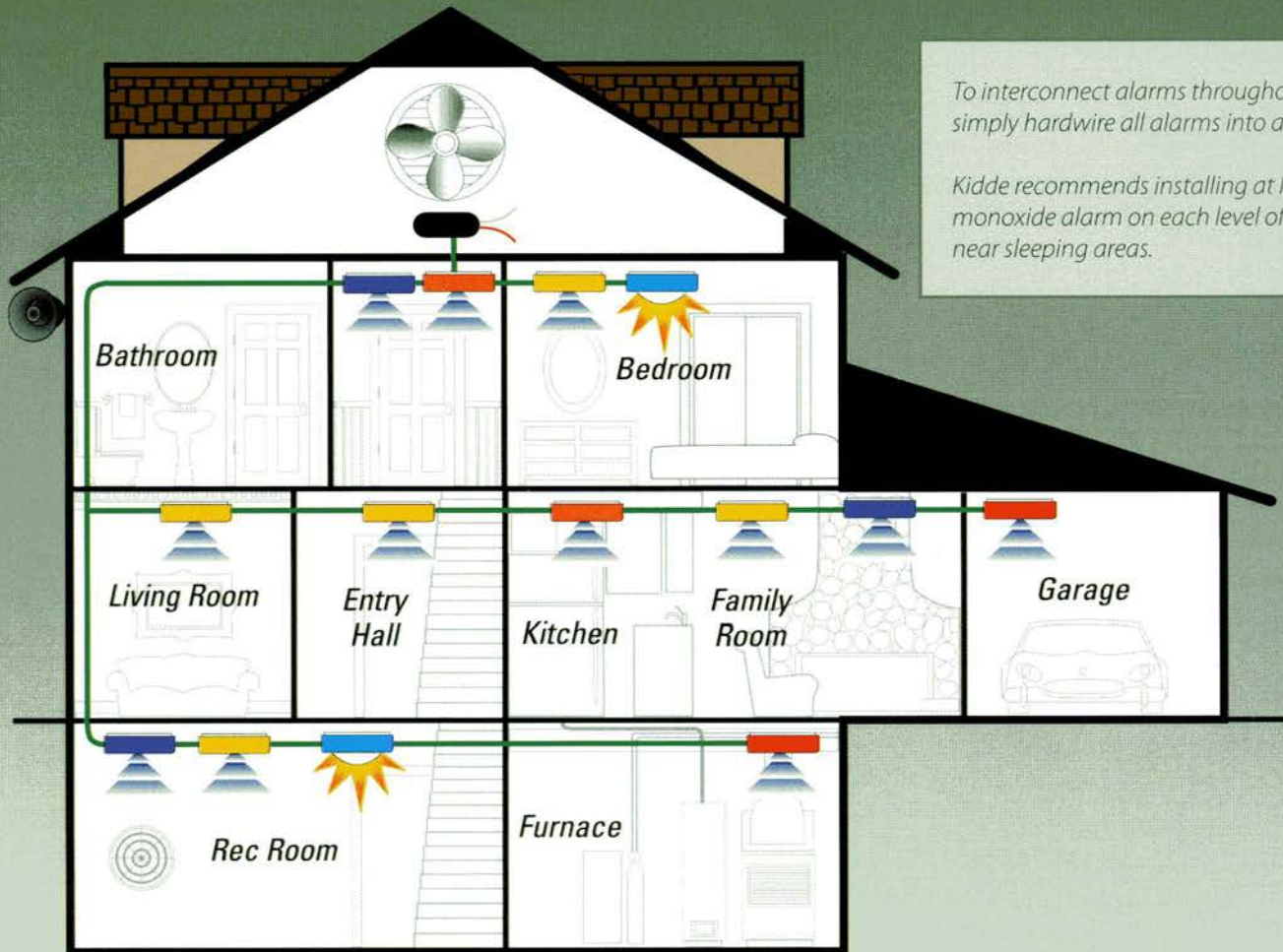


# Product Placement Guidelines

## Interconnected Protection:

*When one alarm is triggered, all connected alarms and devices are immediately activated throughout the home.*



To interconnect alarms throughout the home, simply hardwire all alarms into a single circuit.

Kidde recommends installing at least one carbon monoxide alarm on each level of your home, and near sleeping areas.



### ***Ionization Smoke Alarm:***

Provides early detection against smoke and fire; especially effective against flaming fires.



### ***Photoelectric Smoke Alarm:***

Provides early detection against smoke and fire; especially effective against flaming fires.



### ***Carbon Monoxide Alarm:***

Detects presence of deadly carbon monoxide.



### ***Heat Alarm:***

Alarms when temperatures reach 135°F or greater in areas where smoke alarms can false alarm due to auto exhaust or cooking fumes.



### ***Strobe Light For Hearing Impaired:***

For persons who cannot hear an alarm.



### ***Relay Module:***

Activates or deactivates auxiliary devices such as whole house fans, security lights or sirens.

Placement guidelines for life safety devices as recommended by the National Fire Protection Association and National Home Builders Association.

**Important!** Refer to owner's manual for proper installation and product placement information.