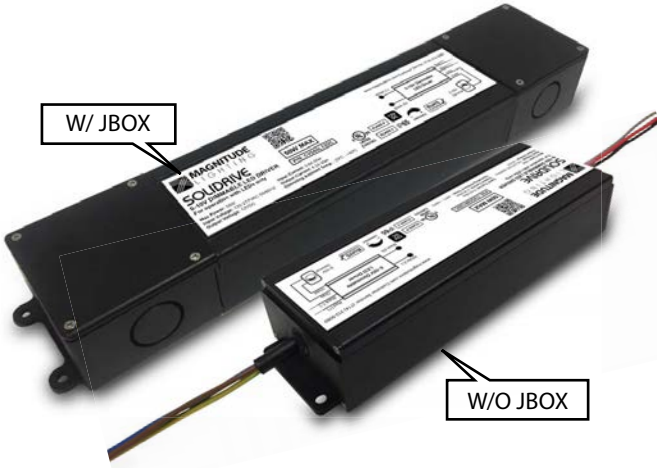


SOLIDRIVE

CONSTANT VOLTAGE 0-10V DIMMABLE LED DRIVER



P/N: CVD50x12DC

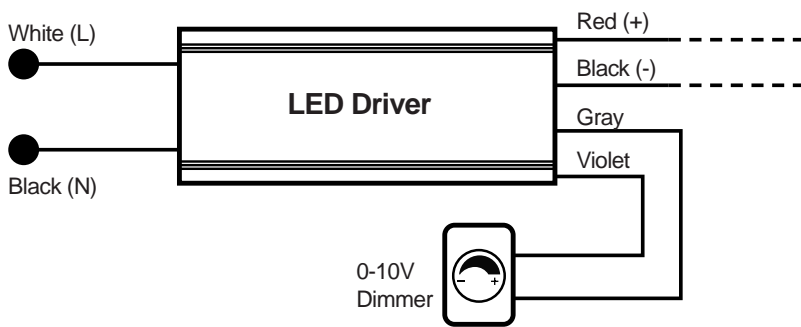


The SoliDrive Series of Constant Voltage Class 2 LED Drivers from Magnitude Lighting offers both UL Listed and UL Recognized style enclosures. The UL Listed type enclosure has a built-in junction box on both the input and output. These drivers are IP65 rated and are suitable for both indoor and outdoor installations. With universal input voltage ranging from 120 to 277VAC, the SoliDrive series of drivers are designed for commercial, industrial and residential applications. Our 0-10V dimming delivers smooth flicker-free linear dimming down to 1% with most LED's and a wide variety of compatible dimmers. As always, 5-year warranty is a standard on all of Magnitude's products.

QUICK SPECS

| Input Voltage | Max Output Power | Output Voltage | Output Current | Efficiency @ Max Load | THD @ Max. Load | Power Factor @ Max. Load | Envir. Protection Rating |
|---------------|------------------|----------------|----------------|-----------------------|-----------------|--------------------------|--------------------------|
| 120-277VAC | 50W | 12VDC | 4200mA | > 80% | < 20% | > 0.95 | IP65 |

WIRING DIAGRAM



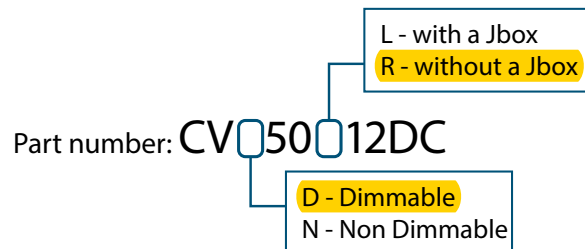
FEATURES

- UL Listed Enclosure – With Built-In Junction Boxes
- Universal Input Voltage
- 0-10V Dimmable - Flicker Free Down to 1%
- Ripple Free
- IP65 – For Both Indoor and Outdoor Use
- UL 8750 Approved
- Class 2, Class P
- Auto-Reset Protection for Short Circuit & Over-Temperature
- Over Load Protection – CC Mode

ENCLOSURE DETAILS In. (mm)

| | L- With a Jbox | R-Without a Jbox |
|-----------------|----------------|------------------|
| Length | 11.4 (290.5) | 6.8 (172) |
| Mounting Length | 12.1 (307.9) | 7.5 (191.6) |
| Width | 2.36 (59.9) | 2.36 (59.9) |
| Height | 1.4 (35) | 1.4 (35) |

| | L- With a Jbox | R-Without a Jbox |
|---------------|-------------------|-------------------|
| Driver Weight | 30.95oz (878gram) | 27.60oz (780gram) |



SPECIFICATIONS

Input

| | |
|---------------------|----------------------------------|
| Input Voltage Range | 120 - 277VAC \pm 10% |
| Input Frequency | 50 / 60Hz |
| Input current | 0.96A Max |
| Inrush Current | 6A Max @ 120V / 23.7A Max @ 277V |
| Efficiency | > 80% Max |
| Power Factor | > 0.95 |
| THD | < 20% |

Output

| | |
|-----------------------|------------|
| Output Voltage | 12VDC |
| Output Current | 4200mA Max |
| Output Current Ripple | > 3% |
| Line Regulation | > 2% |
| Load Regulation | > 5% |
| Turn On Delay Time | > 0.3 Sec |

Environmental

| | |
|-------------------------------|----------------------------|
| Env. Protection Rating | IP65 |
| Operating Ambient temperature | -25°C - +40°C |
| Max Case Temp. (Tcase) | 65°C for a 5 year warranty |
| Storage temperature | -40°C - +85°C |
| Expected life time | 50K Hours (> 65°C) Tc |
| Audible Noise | > 24db Class A |

Dimming

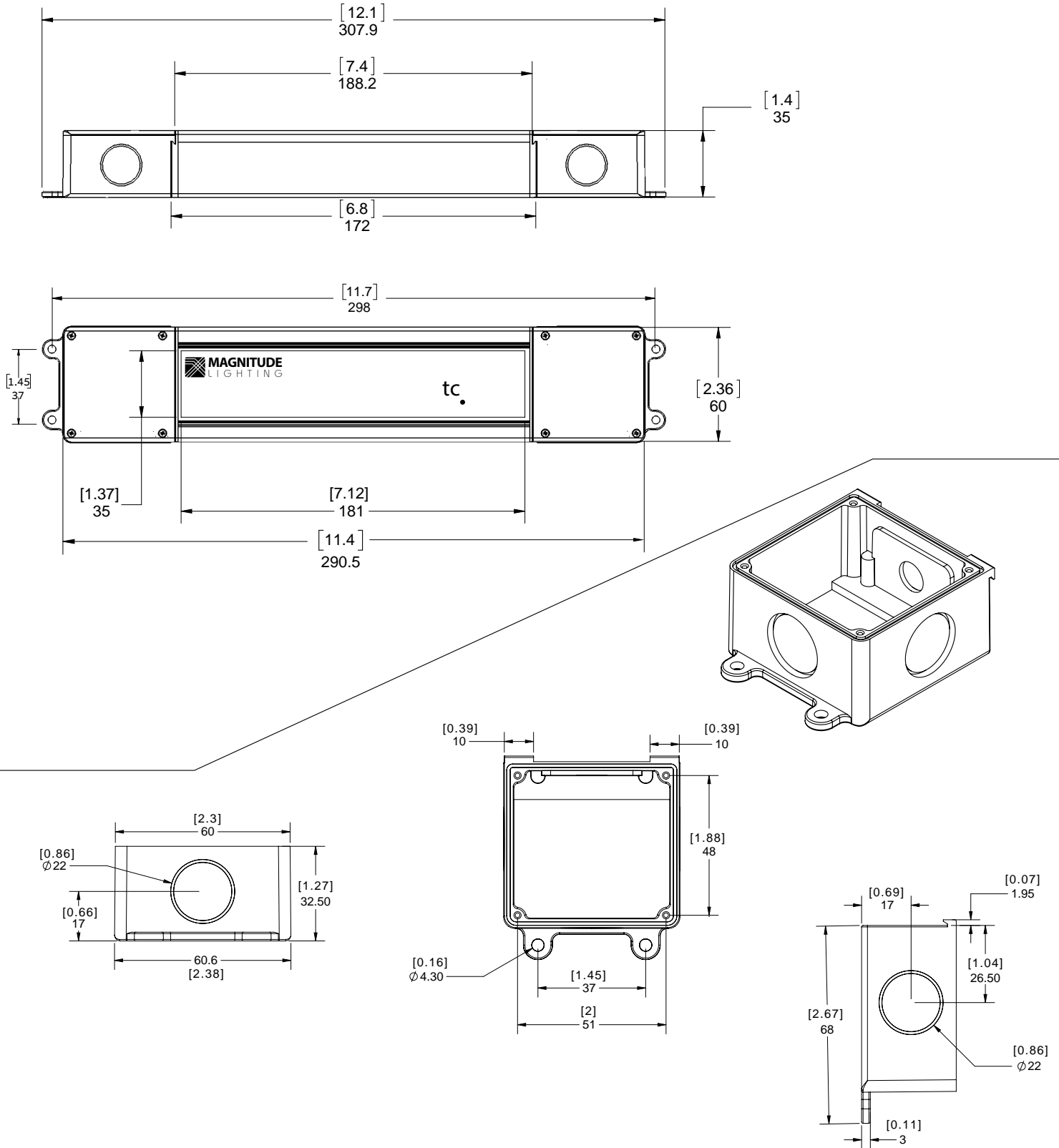
| | |
|---------------------|-----------------|
| Dimming Control | 0-10V |
| Min. Dimming Level | 1% |
| Dimming Curves | Linear |
| Current Consumption | 0.35mA / Source |

Protections

| | |
|-----------------------------|------------------|
| Over Current Protection | Yes |
| Over Voltage Protection | Yes |
| Over Temperature Protection | Yes; Hiccup mode |
| Over Load Protection | Yes; CC mode |
| Short Circuit Protection | Yes; Hiccup mode |

MECHANICAL DIAGRAM

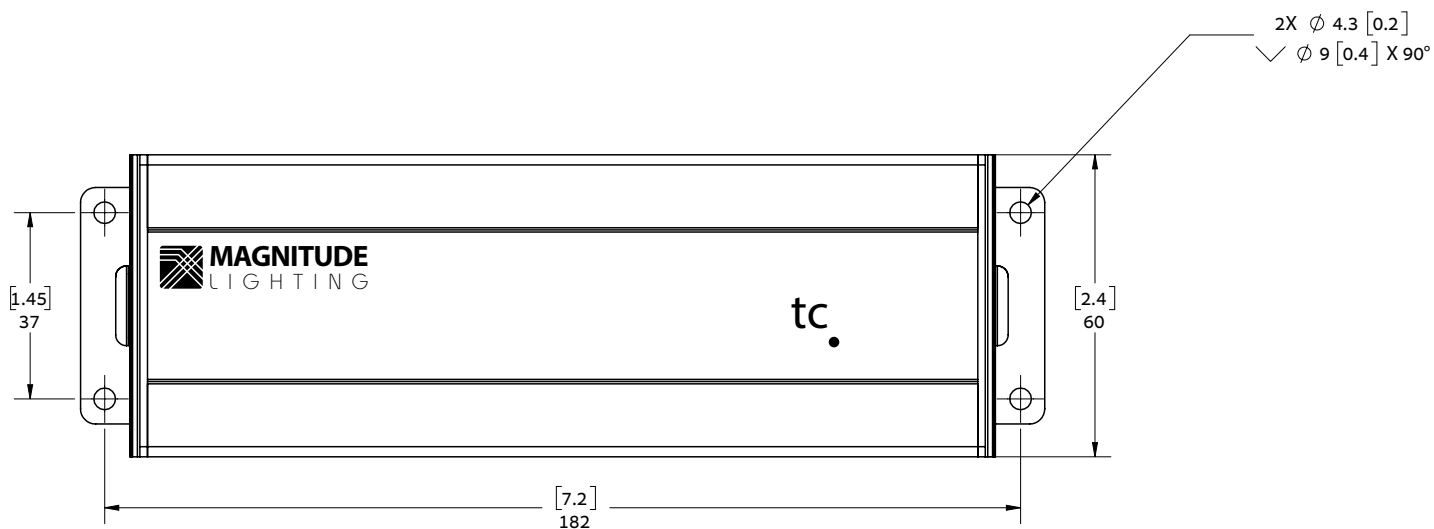
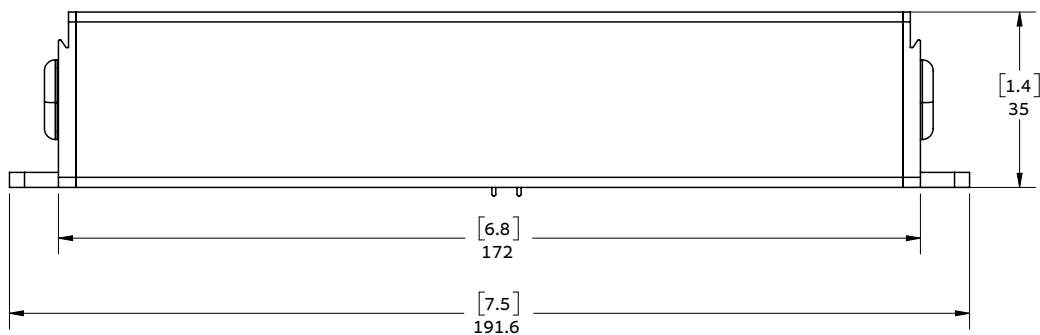
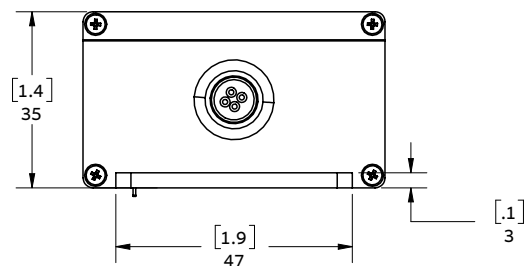
CVD50L12DC - ENCLOSURE WITH JUNCTION BOXES

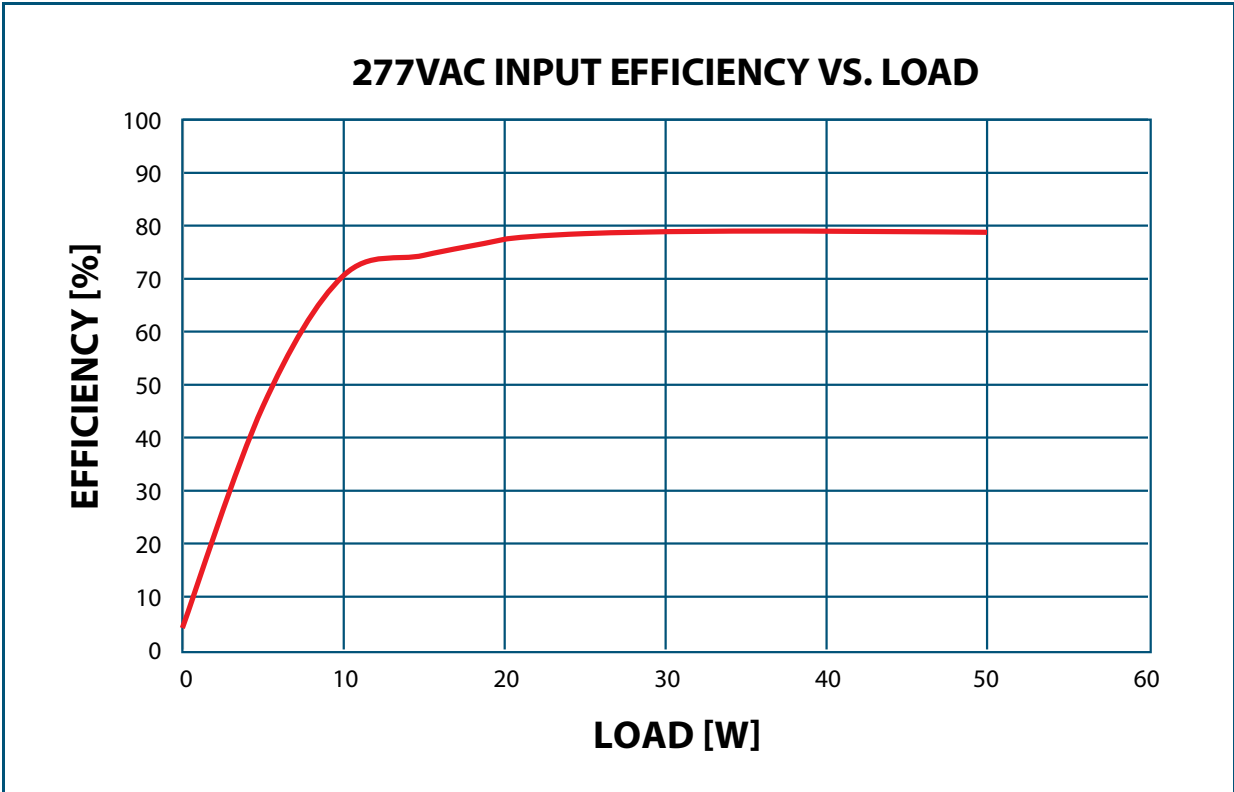
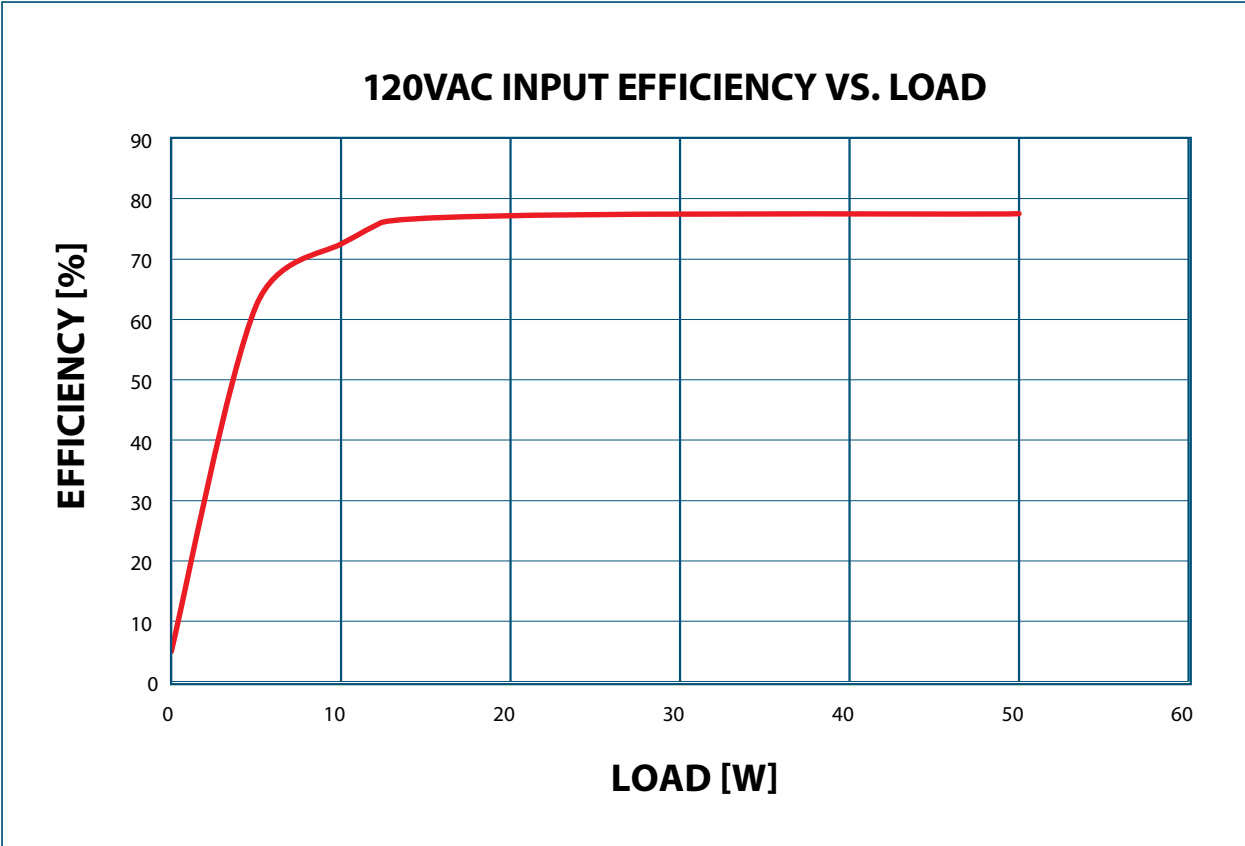


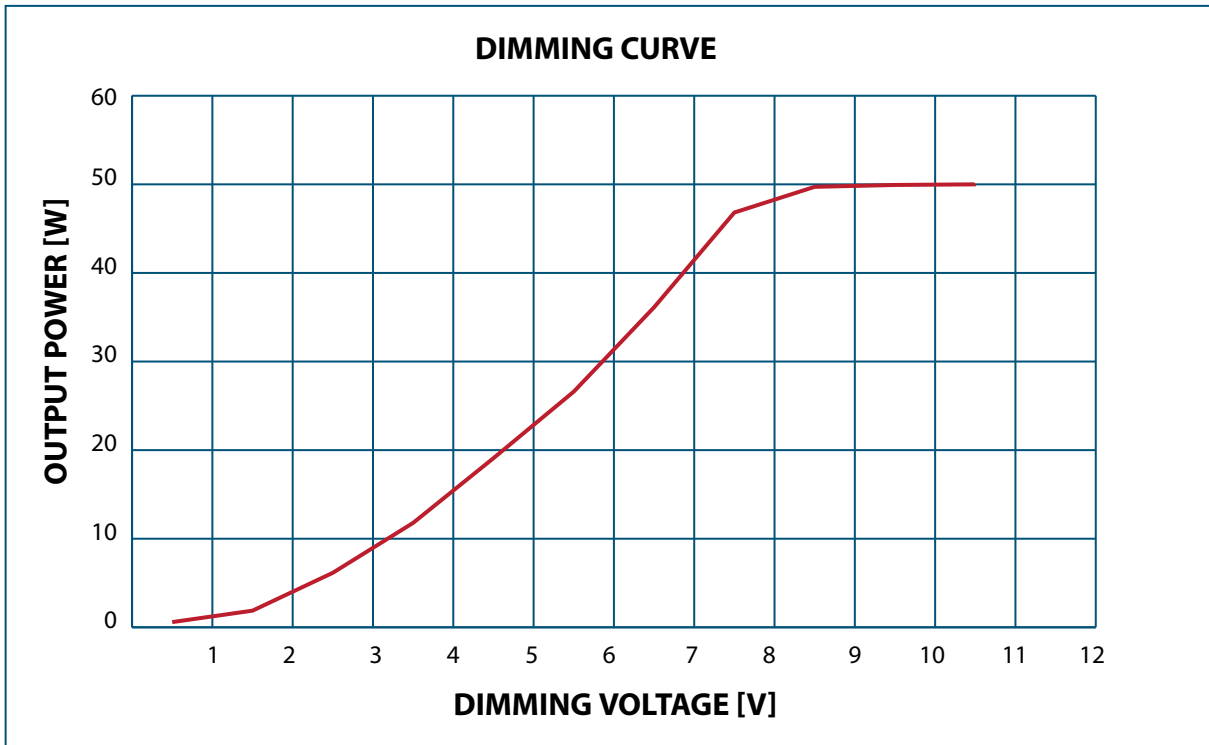
SOLIDRIVE

CONSTANT VOLTAGE 0-10V DIMMABLE LED DRIVER

MECHANICAL DIAGRAM CVD50R12DC - ENCLOSURE







COMPATIBLE 0-10 DIMMER LIST

| Dimming | Part Number |
|---------------------|-----------------------|
| Lutron | Diva - DDTV |
| Lutron | Diva - NFTV |
| Lutron | Nova T - NTFTV |
| Leviton | illumatech - IP7 |
| Watt Stopper | DCLV1 |
| Lightolier Controls | ZP600FAM120 |
| Phillips | Sunrise - SR1200ZTUNV |