

Fan Speed Controls

Features:

- Wide range of products to meet a variety of applications
- Full range speed, slide to off function
- Slide models available for control of fan only
- Tough impact-resistant thermoplastic housing
- Light switch model available
- Dual slide models available for control of fan and light
- Various colors available
- Two years warranty

Testing & Code Compliance:

- UL/CUL Listed
- ISO9001 Registered Manufacturing Facility

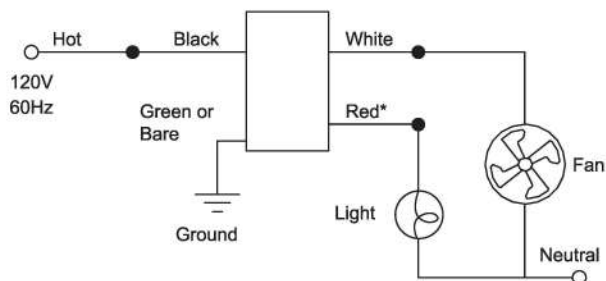
Slide Combination Controls

DESCRIPTION	CAT. NO.	OPERATION	RATING	COLOR
2.5 A FAN, 300 W Light 120 VAC, 60 Hz	17001	Fully Variable Fan* Fully Range Dimmer	2.5 A	Almond, Ivory, Light Almond, White
Single Pole 120 VAC, 60 Hz	17035	Fully Variable Fan*	5 A	Almond, Ivory, White

ENERLITES offers a broad line of residential, commercial, and industrial grade decorator devices. The contemporary style and design generates precise and dependable control, while coordinating with other ENERLITES dimmers and switches all at the same time. These products provide significant energy savings. ENERLITES Rotary Fan Speed Controls provide full-range rotary control of ceiling-fans that is intuitive and surprisingly quiet. With its distinctive styles encompassing the entire line, users are given a true classic feel with these fan speed controls beautiful blend with existing traditional and contemporary interior rooms.

* Note: only works with fully variable fan.

Wiring Diagram



*Cap off Red wire if no light is used.



Fan Speed Controls

Rated at 120VAC, 60Hz

Important Notes

Please read before installing.

- CAUTION:** To avoid overheating and possible damage to other equipment, do not use to control receptacles, fluorescent lighting fixtures, or transformer-supplied appliances.
- Controls require separate wires in the wallbox for fan and light.
- For new installations, wire a test switch before installing the control.
- Set multispeed fans to their highest setting before installing controls.
- Use these controls with a ceiling paddle fan only. Use only one ceiling paddle fan per control.
- Use these controls only with fans marked "Suitable for use with solid state fan-speed controls."
- Do not wire YLFC700-S in circuit with a GFCI breaker/receptacle.
- Controls may feel warm to the touch during normal operation.
- When no "ground means" exists within the wallbox, then NEC 380-9 exception to (b) allows a control without a ground connection, to be installed as a replacement. For this type of installation, cap or remove the green control ground wire. A control installed under this exception (NEC 380-9 exception to (b)) must be provided with a plastic, noncombustible, UL listed wallplate.
- Install in accordance with all national and local electrical codes.
- Clean control with a *soft damp cloth only*. Do not use any chemical cleaners.

TWO-YEAR LIMITED WARRANTY

This warranty gives you specific rights and you may also have other rights, which vary in different states and countries. Our company warrants to the original consumer purchaser that this product is free of defects in materials and workmanship for 2 years from the purchase date. This warranty does not cover labor for removal or reinstallation of the product and is void on any product installed improperly or in an improper environment, overloaded, misused, opened, abused, or altered in any manner. Our company excludes incidental or consequential damages for breach of any warranty on this product. Some jurisdictions may not allow limitations on how long an implied warranty lasts or the exclusion or limitation of incidental or consequential damages, so the above exclusions or limitations may not apply to you.

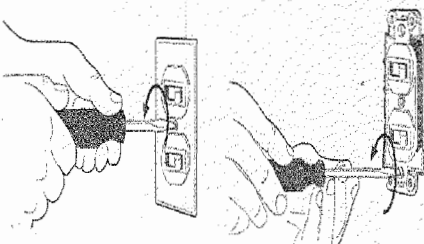
Installation

Turning OFF power.

Step 1 **WARNING:** Turn power OFF at circuit breaker or remove fuse.

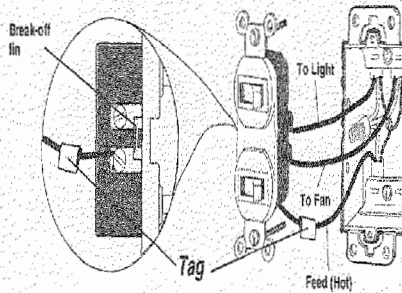


Step 2 Remove switch mounting screws. Pull switch from wall.

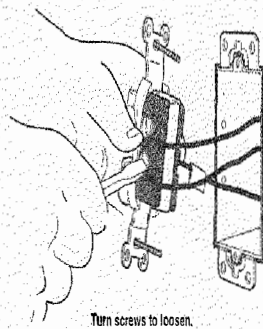


Step 3 Verify application. This dimmer mounts in a single-gang wallbox and independently controls a ceiling paddle fan and a light with each slider. Independent wire must be provided for the fan and light in addition to the feed wire (Hot).

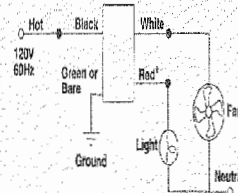
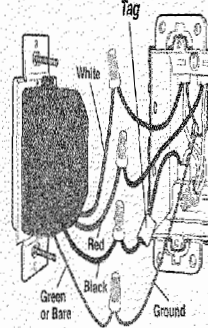
Tag the wire that is connected to the feed side of the switch (the side with the break-off fin).



Step 4 Disconnect switch wires.

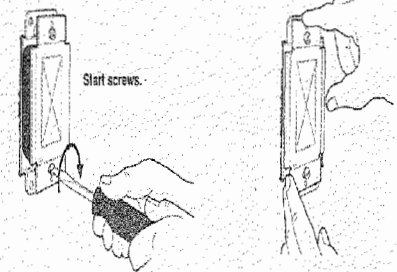


Step 5 Wire the control.



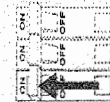
- Connect the green or bare ground wire on the control to the green or bare copper ground wire in the wallbox.
- Connect the black wire on the control to the tagged wallbox wire removed from the switch (feed wire from the circuit breaker or fuse box).
- Connect the white wire on the control to the wire leading to the fan.
- Connect the red wire on the control to the wire leading to the light.

Step 6 Mount and align control. Install wallplate.



Align control and tighten screws.

Step 7 Turn power ON.



Important Wiring Information

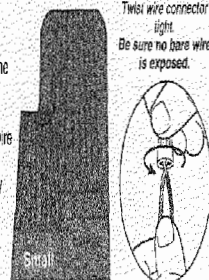
When making wire connections, follow the recommended strip lengths and combinations for the supplied wire connectors. Note: Wire connectors provided are suitable for **copper wire only**. For aluminum wire, consult an electrician.

Small:

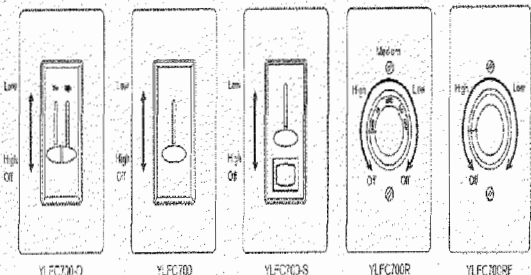
- Strip insulation 3/8" for 14 AWG wire
- Strip insulation 1/2" for 16 or 18 AWG wire
- Use to join one 14 AWG supply wire with one 16 or 18 AWG control wire.

Large:

- Strip insulation 1/2" for 10, 12 or 14 AWG wire
- Strip insulation 5/8" for 16 or 18 AWG wire
- Use to join one or two 12 or 14 AWG supply wires with one 10, 12, 14, 16, or 18 AWG control wire.



Operation



instructions