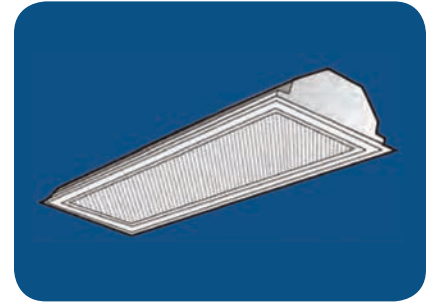


131 1' x 4'

Lensed Static Troffer, Grid Mount



FEATURES & SPECIFICATIONS

INTENDED USE

Specification grade, low profile troffer meets an almost limitless range of applications. Troffer is ideal for all commercial and industrial buildings requiring general illumination with recessed configurations.

SIZE W x L x H in inches (mm)

11.75W x 48.0L x 4.0Dp (300 x 1220 x 100)

LAMP

1 or 2 lamp positions. (Contact factory for 3 lamp availability)

MATERIALS & FEATURES

Housing is die-formed and embossed code 22 gage steel. Finish is high reflectance baked white enamel. Wiring knockouts are provided on back and end of housing. Ballast cover or reflector snaps into place; no tools required for ballast access. Lens is held with a hinged steel door frame; frame hinges downward on either side and is held closed by two positive cam latches. Premium, full specular reflectors are available as an option to increase efficiency or modify lighting distribution.

- POST PAINTED POWDER COAT FINISH
- Shallow design for low clearance plenums
- Clear 0.10thk A12 acrylic lens is standard; many options available.
- Flush steel hinges from either side; field reversible.
- Access plate to simplify installation

MOUNTING

Recessed inverted T-Bar ceilings. Grid mount.

LISTING

Fixture & Ballast: UL Listed

Ballast: Thermally protected, class P, HPF, Non PCB

TYPICAL OPTIONS AND ACCESSORIES

Emergency ballasts, whips, regressed doors, wire guards, frame kits, and lenses. See options page at the end of the T02Grid section, or contact factory for more details.

ORDERING INFORMATION

Example: 131 A 232 12 E120

131	A	2	32	12		E120
Series	Lamp Position		Lamp Type [1]		Reflector [3]	Ballast & Voltage [1]
131 Lensed Static Troffer, Grid Mount	1 or 2 Lamps Not included		40 48 in. T12 [7] 32 48 in. T8 28 46 in. T5 54 46 in. T5HO		(blank) no reflector [3] M20 Mirrored reflector	E120 Electronic, 120V E277 Electronic, 277V MV Electronic, Multivolt (120-277) H120 [4] Electronic, 120V, Hi-Lume H277 [4] Electronic, 277V, Hi-Lume H MV [4] Electronic, Multivolt, Hi-Lume L120 [4] Electronic, 120V, Lo-Lume L277 [4] Electronic, 277V, Lo-Lume LMV [4] Electronic, Multivolt, Lo-Lume G120 [5] Line Dimming, 120 Volt G277 [5] Line Dimming, 277 Volt GMV [5] Line or 0-10V dimming, Multivolt
Lens Material [2]			1x4 Size Code			Options [1]
A Prismatic Acrylic #12 Pattern A125 Prismatic Acrylic #12 Pattern 1/8" MW Matte White Acrylic SP1 Specular Parabolic Louver 1/2" x 1/2" x 3/8" SP4 Specular Parabolic Louver 3/4" x 3/4" x 1/2" SP2 Specular Parabolic Louver 1 1/2" x 1 1/2" x 1" PLA White Cubed Acrylic Louver 1/2" x 1/2" x 3/8"			12 The 12 size code must appear in all 1x4 items.			RA Regressed aluminum door, white RAB Regressed aluminum door, black WP 6 ft. 3 wire 18 gauge whip WP10 6 ft. 4 wire 18 gauge whip EM Emergency ballast, 500 lumens EM14 Emergency ballast, 1400 lumens

Notes

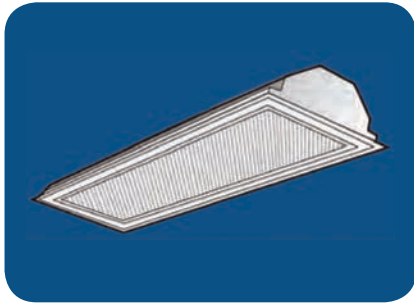
- [1] See end of T02Grid for many additional lamps, ballasts, finishes, and options.
- [2] Custom louvers available in any cell configuration. Contact factory for additional information.
- [3] Custom reflectors available to create any light distribution.
- [4] HiLume and LoLume ballasts available for T8 lamps only.
- [5] Dimming ballasts available for T8 & T5HO lamps only.
- [6] Magnetic ballasts available for T8 & T12 only.
- [7] Magnetic & electronic T12 ballasts drive a 34W energy saver lamp.

EM14 ballast required for T5 & T5HO lamps

Catalog Number:
Notes:

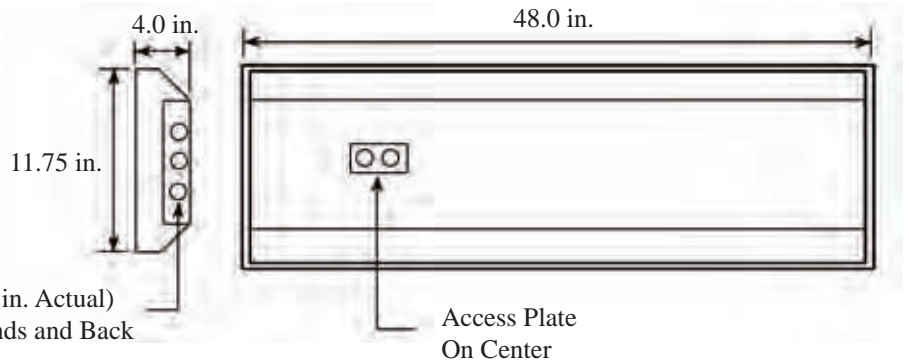
131 1' x 4'

Lensed Static Troffer, Grid Mount



DIMENSIONS

All dimensions are inches. Specifications subject to change without notice.



PHOTOMETRICS

Calculated using the zonal cavity method in accordance with IESNA LM41 procedure. Lamp configurations shown are typical. Photometric data on these and other configurations available upon request.

Floor	20%	20%	20%	20%	20%	20%	20%	20%	20%
Ceiling	80%	80%	80%	70%	70%	70%	50%	50%	50%
Wall	70%	50%	30%	70%	50%	30%	50%	30%	10%
RCR	Zonal cavity coefficients			131A232-12		Spacing ratio. Along 1.2 Across 1.3			
0	0.68	0.67	0.67	0.65	0.66	0.65	0.63	0.63	0.62
1	0.62	0.60	0.57	0.61	0.58	0.56	0.56	0.54	0.53
2	0.57	0.53	0.49	0.56	0.52	0.48	0.50	0.47	0.44
3	0.53	0.47	0.42	0.51	0.46	0.42	0.44	0.41	0.38
4	0.49	0.42	0.37	0.48	0.41	0.37	0.40	0.36	0.33
5	0.45	0.38	0.33	0.44	0.37	0.33	0.36	0.32	0.29
6	0.42	0.34	0.29	0.41	0.34	0.29	0.33	0.29	0.26
7	0.39	0.31	0.27	0.38	0.31	0.26	0.30	0.26	0.23
8	0.36	0.29	0.24	0.36	0.28	0.24	0.28	0.24	0.21
9	0.34	0.27	0.22	0.33	0.26	0.22	0.26	0.22	0.19
10	0.32	0.25	0.20	0.31	0.24	0.20	0.24	0.20	0.17

Floor	20%	20%	20%	20%	20%	20%	20%	20%	20%
Ceiling	80%	80%	80%	70%	70%	70%	50%	50%	50%
Wall	70%	50%	30%	70%	50%	30%	50%	30%	10%
RCR	Zonal cavity coefficients			131A332-12		Spacing ratio. Along 1.2 Across 1.3			
0	0.70	0.71	0.71	0.70	0.69	0.66	0.66	0.66	0.66
1	0.66	0.63	0.60	0.64	0.61	0.59	0.59	0.57	0.55
2	0.60	0.56	0.52	0.59	0.55	0.51	0.52	0.49	0.47
3	0.56	0.49	0.45	0.54	0.49	0.44	0.47	0.43	0.40
4	0.52	0.44	0.39	0.50	0.44	0.39	0.42	0.38	0.35
5	0.48	0.40	0.35	0.46	0.39	0.35	0.38	0.34	0.31
6	0.44	0.36	0.31	0.43	0.36	0.31	0.35	0.30	0.27
7	0.41	0.33	0.28	0.40	0.33	0.28	0.32	0.27	0.24
8	0.39	0.30	0.26	0.38	0.30	0.25	0.29	0.25	0.22
9	0.36	0.28	0.23	0.35	0.28	0.23	0.27	0.23	0.20
10	0.34	0.26	0.21	0.33	0.26	0.21	0.25	0.21	0.18

Floor	20%	20%	20%	20%	20%	20%	20%	20%	20%
Ceiling	80%	80%	80%	70%	70%	70%	50%	50%	50%
Wall	70%	50%	30%	70%	50%	30%	50%	30%	10%
RCR	Zonal cavity coefficients			131A132M20-12		Spacing ratio. Along 1.2 Across 1.3			
0	0.93	0.93	0.92	0.91	0.90	0.90	0.87	0.86	0.86
1	0.86	0.82	0.78	0.84	0.80	0.77	0.77	0.74	0.72
2	0.78	0.72	0.67	0.76	0.70	0.66	0.68	0.64	0.60
3	0.72	0.63	0.57	0.70	0.62	0.56	0.60	0.55	0.51
4	0.66	0.56	0.50	0.64	0.55	0.49	0.53	0.48	0.44
5	0.61	0.50	0.43	0.59	0.49	0.43	0.48	0.42	0.38
6	0.56	0.45	0.38	0.54	0.44	0.38	0.43	0.37	0.33
7	0.52	0.41	0.34	0.50	0.40	0.34	0.39	0.33	0.29
8	0.48	0.37	0.30	0.47	0.37	0.30	0.36	0.30	0.26
9	0.45	0.34	0.27	0.44	0.33	0.27	0.32	0.27	0.23
10	0.42	0.31	0.25	0.41	0.31	0.25	0.30	0.24	0.21

131 2' x 2'

Lensed Static Troffer, Grid Mount



FEATURES & SPECIFICATIONS

INTENDED USE

Specification grade, low profile troffer meets an almost limitless range of applications. Troffer is ideal for all commercial and industrial buildings requiring general illumination with recessed configurations.

SIZE W x L x H in inches (mm)

23.75W x 24.0L x 4.0Dp (600 x 610 x 100)

LAMP

2, 3, or 4 lamp positions.

MATERIALS & FEATURES

Housing is die-formed and embossed code 22 gage steel. Finish is high reflectance baked white enamel. Wiring knockouts are provided on back and end of housing. Ballast cover or reflector snaps into place; no tools required for ballast access. Lens is held with a hinged steel door frame; frame hinges downward on either side and is held closed by two positive cam latches. Premium, full specular reflectors are available as an option to increase efficiency or modify lighting distribution.

- POST PAINTED POWDER COAT FINISH
- Shallow design for low clearance plenums
- Clear 0.10thk A12 acrylic lens is standard; many options available.
- Flush steel hinges from either side; field reversible.
- Access plate to simplify installation

MOUNTING

Recessed inverted T-Bar ceilings. Grid mount.

LISTING

Fixture & Ballast: UL Listed

Ballast: Thermally protected, class P, HPF, Non PCB

TYPICAL OPTIONS AND ACCESSORIES

Emergency ballasts, whips, regressed doors, wire guards, frame kits, and lenses. See options page at the end of the T02Grid section, or contact factory for more details.

ORDERING INFORMATION

Example: 131 A 232U E120

131	A	2	32U		E120	
Series	Lamp Count		Lamp Type [1]		Ballast & Voltage [1]	
131 Lensed Static Troffer, Grid Mount	2, 3, or 4 Lamps Not included		20 24 in. T12 17 24 in. T8 14 23 in. T5 24 23 in. T5HO 32U T8 Ubend 6 in. leg 31U T8 Ubend 1.62 in. leg 40BX Biaxial (TT5) 2G11 4-Pin 40W		E120 Electronic, 120V E277 Electronic, 277V MV Electronic, Multivolt (120-277) H120 [4] Electronic, 120V, Hi-Lume H277 [4] Electronic, 277V, Hi-Lume H MV [4] Electronic, Multivolt, Hi-Lume L120 [4] Electronic, 120V, Lo-Lume L277 [4] Electronic, 277V, Lo-Lume L MV [4] Electronic, Multivolt, Lo-Lume G120 [5] Line Dimming, 120 Volt G277 [5] Line Dimming, 277 Volt GMV [5] Line or 0-10V dimming, Multivolt	
	Lens Material [2]			Reflector [3]		Options [1]
	A Prismatic Acrylic #12 Pattern A125 Prismatic Acrylic #12 Pattern 1/8" MW Matte White Acrylic SP1 Specular Parabolic Louver 1/2" x 1/2" x 3/8" SP4 Specular Parabolic Louver 3/4" x 3/4" x 1/2" SP2 Specular Parabolic Louver 1 1/2" x 1 1/2" x 1" PLA White Cubed Acrylic Louver 1/2" x 1/2" x 3/8"			(blank) no reflector [3] M20 Mirrored reflector		RA Regressed aluminum door, white RAB Regressed aluminum door, black WP 6 ft. 3 wire 18 gauge whip WP10 6 ft. 4 wire 18 gauge whip EM Emergency ballast, 500 lumens EM14 Emergency ballast, 1400 lumens

Notes

- [1] See end of T02Grid for many additional lamps, ballasts, finishes, and options.
- [2] Many additional lens materials are available. Contact factory for additional information.
- [3] Custom reflectors available to create any light distribution.
- [4] HiLume and LoLume ballasts available for T8 lamps only.
- [5] Line dimming ballasts available for T8 & T5HO lamps only.
- [6] Magnetic ballasts available for T8 & T12 only.

EM14 ballast required for T5 & T5HO lamps

Catalog Number:
Notes:

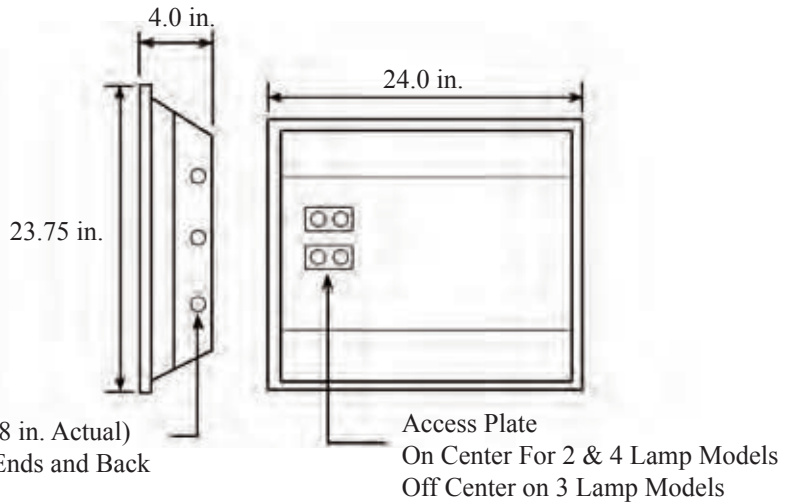
131 2' x 2'

Lensed Static Troffer, Grid Mount



DIMENSIONS

All dimensions are inches. Specifications subject to change without notice.



PHOTOMETRICS

Calculated using the zonal cavity method in accordance with IESNA LM41 procedure. Lamp configurations shown are typical. Photometric data on these and other configurations available upon request.

Floor	20%	20%	20%	20%	20%	20%	20%	20%	20%
Ceiling	80%	80%	80%	70%	70%	70%	50%	50%	50%
Wall	70%	50%	30%	70%	50%	30%	50%	30%	10%
RCR	Zonal cavity coefficients			131A317	Spacing ratio.		Along 1.2	Across 1.3	
0	0.89	0.89	0.88	0.87	0.87	0.86	0.83	0.82	0.82
1	0.82	0.78	0.75	0.80	0.77	0.74	0.74	0.71	0.69
2	0.76	0.69	0.64	0.74	0.68	0.63	0.65	0.62	0.58
3	0.69	0.62	0.56	0.68	0.60	0.55	0.58	0.54	0.50
4	0.64	0.55	0.49	0.63	0.54	0.48	0.53	0.47	0.43
5	0.59	0.50	0.43	0.58	0.49	0.43	0.47	0.42	0.38
6	0.55	0.45	0.38	0.53	0.44	0.38	0.43	0.37	0.33
7	0.51	0.41	0.35	0.50	0.40	0.34	0.39	0.34	0.30
8	0.48	0.38	0.31	0.47	0.37	0.31	0.36	0.31	0.27
9	0.45	0.35	0.29	0.44	0.34	0.28	0.33	0.28	0.24
10	0.42	0.32	0.26	0.41	0.32	0.26	0.31	0.26	0.22

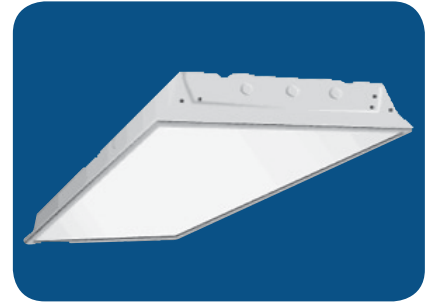
Floor	20%	20%	20%	20%	20%	20%	20%	20%	20%
Ceiling	80%	80%	80%	70%	70%	70%	50%	50%	50%
Wall	70%	50%	30%	70%	50%	30%	50%	30%	10%
RCR	Zonal cavity coefficients			131A217M20	Spacing ratio.		Along 1.2	Across 1.3	
0	1.04	1.03	1.02	1.01	1.01	1	0.96	0.96	0.95
1	0.96	0.92	0.88	0.93	0.9	0.86	0.86	0.83	0.81
2	0.88	0.81	0.76	0.86	0.8	0.75	0.77	0.73	0.69
3	0.81	0.73	0.66	0.79	0.71	0.65	0.69	0.64	0.59
4	0.76	0.65	0.58	0.74	0.64	0.58	0.62	0.57	0.52
5	0.7	0.59	0.52	0.68	0.58	0.51	0.56	0.5	0.46
6	0.65	0.53	0.46	0.63	0.53	0.46	0.51	0.45	0.4
7	0.61	0.49	0.42	0.59	0.48	0.41	0.47	0.41	0.36
8	0.57	0.45	0.38	0.55	0.45	0.38	0.43	0.37	0.33
9	0.53	0.42	0.35	0.52	0.41	0.34	0.4	0.34	0.3
10	0.5	0.38	0.32	0.49	0.38	0.32	0.37	0.31	0.27

Floor	20%	20%	20%	20%	20%	20%	20%	20%	20%
Ceiling	80%	80%	80%	70%	70%	70%	50%	50%	50%
Wall	70%	50%	30%	70%	50%	30%	50%	30%	10%
RCR	Zonal cavity coefficients			131A417	Spacing ratio.		Along 1.2	Across 1.3	
0	0.85	0.85	0.84	0.83	0.83	0.82	0.79	0.79	0.78
1	0.79	0.75	0.72	0.77	0.73	0.71	0.7	0.68	0.66
2	0.72	0.66	0.62	0.7	0.65	0.61	0.63	0.59	0.56
3	0.66	0.59	0.53	0.65	0.58	0.53	0.56	0.51	0.48
4	0.61	0.53	0.47	0.6	0.52	0.46	0.5	0.45	0.42
5	0.57	0.48	0.41	0.55	0.47	0.41	0.45	0.4	0.36
6	0.52	0.43	0.37	0.51	0.42	0.36	0.41	0.36	0.32
7	0.49	0.39	0.33	0.48	0.39	0.33	0.38	0.32	0.29
8	0.46	0.36	0.3	0.45	0.36	0.3	0.35	0.3	0.26
9	0.43	0.33	0.27	0.42	0.33	0.27	0.32	0.27	0.23
10	0.4	0.31	0.25	0.39	0.3	0.25	0.3	0.25	0.21

Floor	20%	20%	20%	20%	20%	20%	20%	20%	20%
Ceiling	80%	80%	80%	70%	70%	70%	50%	50%	50%
Wall	70%	50%	30%	70%	50%	30%	50%	30%	10%
RCR	Zonal cavity coefficients			131A232U	Spacing ratio.		Along 1.2	Across 1.3	
0	0.84	0.83	0.83	0.82	0.81	0.81	0.78	0.78	0.77
1	0.77	0.74	0.71	0.75	0.72	0.70	0.69	0.67	0.65
2	0.71	0.65	0.61	0.64	0.64	0.60	0.62	0.58	0.55
3	0.66	0.58	0.53	0.57	0.57	0.52	0.55	0.51	0.47
4	0.61	0.52	0.46	0.51	0.51	0.46	0.50	0.45	0.41
5	0.56	0.47	0.41	0.46	0.46	0.41	0.45	0.40	0.36
6	0.52	0.43	0.36	0.42	0.42	0.36	0.41	0.36	0.32
7	0.48	0.39	0.33	0.38	0.38	0.33	0.37	0.32	0.29
8	0.45	0.36	0.30	0.35	0.35	0.30	0.34	0.29	0.26
9	0.42	0.33	0.27	0.32	0.32	0.27	0.32	0.27	0.23
10	0.40	0.30	0.25	0.30	0.30	0.25	0.29	0.25	0.21

131 2' x 4'

Lensed Static Troffer, Grid Mount



FEATURES & SPECIFICATIONS

INTENDED USE

Specification grade, low profile troffer meets an almost limitless range of applications. Troffer is ideal for all commercial and industrial buildings requiring general illumination with recessed configurations.

SIZE W x L x H in inches (mm)

23.75W x 48.0L x 4.0Dp (600 x 610 x 100)

LAMP

2, 3, or 4 lamp positions.

MATERIALS & FEATURES

Housing is die-formed and embossed code 22 gage steel. Finish is high reflectance baked white enamel. Wiring knockouts are provided on back and end of housing. Ballast cover or reflector snaps into place; no tools required for ballast access. Lens is held with a hinged steel door frame; frame hinges downward on either side and is held closed by two positive cam latches. Premium, full specular reflectors are available as an option to increase efficiency or modify lighting distribution.

- POST PAINTED POWDER COAT FINISH
- Shallow design for low clearance plenums
- Clear 0.10thk A12 acrylic lens is standard; many options available.
- Flush steel hinges from either side; field reversible.
- Access plate to simplify installation

MOUNTING

Recessed inverted T-Bar ceilings. Grid mount.

LISTING

Fixture & Ballast: UL Listed Ballast: Thermally protected, class P, HPF, Non PCB

TYPICAL OPTIONS AND ACCESSORIES

Emergency ballasts, whips, regressed doors, wire guards, frame kits, and lenses. See options page at the end of the T02Grid section, or contact factory for more details.

***See HB131 Series for 6 lamp conversion**

ORDERING INFORMATION

Example: 131 A 432 E120

131	A	4	32	E120
Series	Lamp Count	Lamp Type [1]		Ballast & Voltage [1]
131 Lensed Static Troffer, Grid Mount	2, 3, or 4 Lamps Not included	40	48 in. T12 [7]	E120 Electronic, 120V
		32	48 in. T8	E277 Electronic, 277V
		28	46 in. T5	MV Electronic, Multivolt (120-277)
		54	46 in. T5HO	H120 [4] Electronic, 120V, Hi-Lume
				H277 [4] Electronic, 277V, Hi-Lume
				H120 [4] Electronic, 120V, Lo-Lume
				H277 [4] Electronic, 277V, Lo-Lume
				LMV [4] Electronic, Multivolt, Lo-Lume
				G120 [5] Line Dimming, 120 Volt
				G277 [5] Line Dimming, 277 Volt
				GMV [5] Line or 0-10V dimming, Multivolt
				Reflector [3]
				(blank) no reflector [3]
				M20 Mirrored reflector
				Options [1]
				RA Regressed aluminum door, white
				RAB Regressed aluminum door, black
				WP 6 ft. 3 wire 18 gauge whip
				WP10 6 ft. 4 wire 18 gauge whip
				EM Emergency ballast, 500 lumens
				EM14 Emergency ballast, 1400 lumens

Notes

- [1] See end of T02Grid for many additional lamps, ballasts, finishes, and options.
- [2] Many additional lens materials are available. Contact factory for additional information.
- [3] Custom reflectors available to create any light distribution.
- [4] HiLume and LoLume ballasts available for T8 lamps only.
- [5] Line dimming ballasts available for T8 & T5HO lamps only.
- [6] Magnetic ballasts available for T8 & T12 only.
- [7] Magnetic & electronic T12 ballasts drive a 34W energy saver lamp.

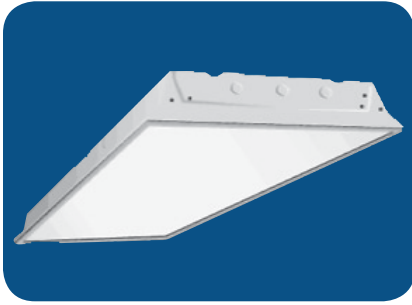
EM14 ballast required for T5 & T5HO lamps

Catalog Number:

Notes:

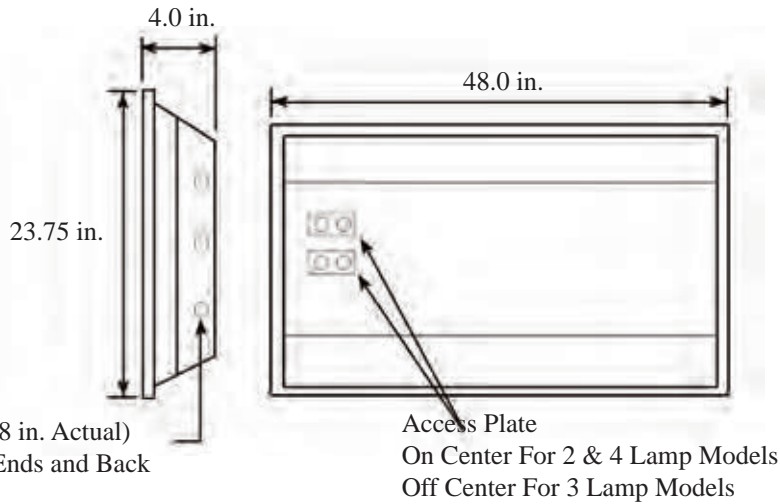
131 2' x 4'

Lensed Static Troffer, Grid Mount



DIMENSIONS

All dimensions are inches. Specifications subject to change without notice.



PHOTOMETRICS

Lamping: 3 light F28T5
Efficiency: 84.0%

Lamping: 2 light F28T5
Efficiency: 82.8%

		Coefficients of Utilization									
		80%			70%			50%			
RCR	f p	% 0 2									
	pc pw	70%	50%	30%	10%	50%	30%	10%	50%	30%	10%
0		100	100	100	98	98	98	93	93	93	
1		92	88	85	82	86	83	81	83	80	78
2		84	78	73	68	76	72	67	73	69	66
3		77	69	63	58	68	62	57	65	60	56
4		71	62	55	49	61	54	49	59	53	48
5		66	55	48	43	55	48	43	53	47	42
6		61	50	43	38	49	43	38	48	42	37
7		57	46	39	34	45	38	33	44	38	33
8		53	42	35	30	41	35	30	40	34	30
9		49	38	32	27	38	31	27	37	31	27
10		46	35	29	25	35	29	25	34	28	25

		Coefficients of Utilization									
		80%			70%			50%			
RCR	f p	% 0 2									
	pc pw	70%	50%	30%	10%	50%	30%	10%	50%	30%	10%
0		99	99	99	99	96	96	96	92	92	92
1		91	87	84	81	85	82	80	82	79	77
2		83	77	72	67	75	71	66	72	68	65
3		76	68	62	57	67	61	56	64	59	55
4		70	61	54	49	60	53	48	58	52	48
5		65	55	48	42	54	47	42	52	46	42
6		60	49	42	37	49	42	37	47	41	37
7		56	45	38	33	44	38	33	43	37	33
8		52	41	34	30	40	34	29	39	33	29
9		49	38	31	27	37	31	27	36	30	26
10		45	35	28	24	34	28	24	34	28	24

Zonal Lumen Summary

Zone	Lumens	% Lamp	% Fixture
0° - 30°	2146.2	26.2	31.2
0° - 40°	3524.8	43.0	51.2
0° - 60°	5852.8	71.5	85.1
0° - 90°	6878.8	84.0	100.0
90° - 180°	0.0	0.0	0.0
0° - 180°	6878.8	84.0	100.0

Zonal Lumen Summary

Zone	Lumens	% Lamp	% Fixture
0° - 30°	1392.0	25.5	30.8
0° - 40°	2307.0	42.3	51.0
0° - 60°	3852.1	70.6	85.2
0° - 90°	4523.1	82.8	100.0
90° - 180°	0.0	0.0	0.0
0° - 180°	4523.1	82.8	100.0

131 4' x 4'

Lensed Static Troffer Grid Mount



FEATURES & SPECIFICATIONS

HOUSING - 22 gauge die formed C.R.S.

DOOR FRAME – 22 gauge C.R.S. or .050” extruded aluminum, flat or regress, with mitered corners. T-slot steel hinge allows reversible hinging and latching

SHIELDING – #12 pattern, .125” acrylic overlay standard – other patterns and thicknesses available

FINISH – 92% minimum average reflective white powder coat with multi-stage iron/phosphate prepared metal

ELECTRICAL – Electronic ballast standard, instant start T8, programmed start T5, rated Class P

LABELS – UL/CUL listed as recessed fluorescent luminaire suitable for dry or damp locations

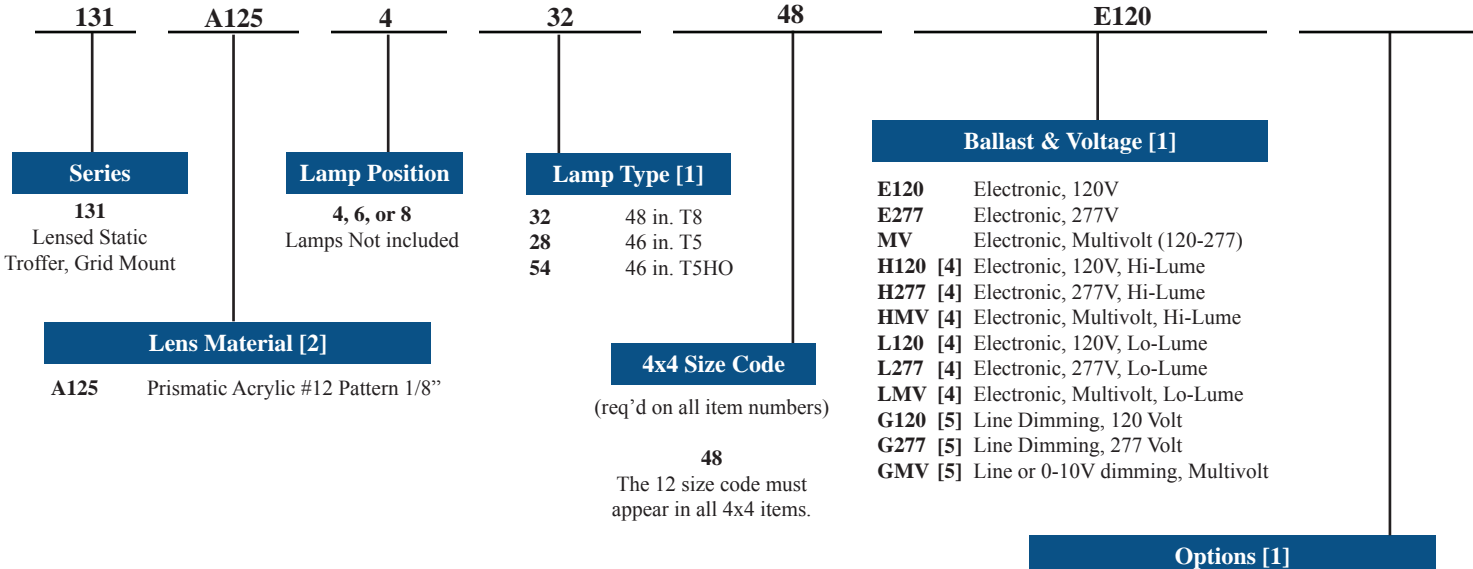
MOUNTING – NEMA Type “G” standard.

FEATURES:

- T-slot steel hinge ensures positive retention when door is opened
- 5.50” deep housing eliminates lens shadowing
- Deep reinforcement ribs provide added strength
- Rolled-edge channel adds superior strength
- All parts painted after fabrication to facilitate installation, increase efficiency, and inhibit corrosion

ORDERING INFORMATION

Example: 131A12543248E120



Notes

- [1] See end of T02Grid for many additional lamps, ballasts, finishes, and options.
- [2] Custom louvers available in any cell configuration. Contact factory for additional information.
- [3] Custom reflectors available to create any light distribution.
- [4] HiLume and LoLume ballasts available for T8 lamps only.
- [5] Dimming ballasts available for T8 & T5HO lamps only.
- [6] Magnetic ballasts available for T8 & T12 only.
- [7] Magnetic & electronic T12 ballasts drive a 34W energy saver lamp.

Catalog Number:
Notes:

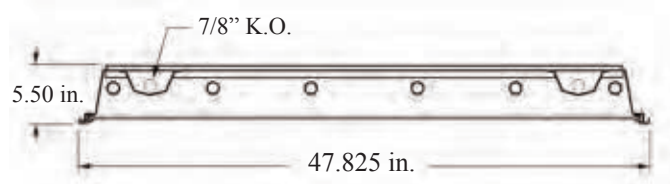
131 4' x 4'

Lensed Static Troffer Grid Mount



DIMENSIONS

All dimensions are inches. Specifications subject to change without notice.



PHOTOMETRICS

Calculated using the zonal cavity method in accordance with IESNA LM41 procedure. Lamp configurations shown are typical. Photometric data on these and other configurations available upon request.

Floor	20%	20%	20%	20%	20%	20%	20%	20%	20%
Ceiling	80%	80%	80%	70%	70%	70%	50%	50%	50%
Wall	70%	50%	30%	70%	50%	30%	50%	30%	10%
RCR	Zonal cavity coefficients			131A12543248	Spacing ratio. Along 1.2 Across 1..3				
0	1.05	1.05	1.05	1.03	1.03	1.03	.98	.98	.98
1	.97	.94	.91	.95	.92	.89	.88	.86	.84
2	.90	.84	.79	.88	.82	.78	.79	.75	.72
3	.83	.75	.69	.81	.74	.68	.71	.67	.62
4	.77	.68	.61	.75	.67	.60	.64	.59	.55
5	.71	.61	.53	.69	.60	.53	.58	.52	.47
6	.66	.55	.48	.64	.54	.47	.52	.46	.42
7	.61	.49	.42	.59	.49	.42	.47	.41	.37
8	.56	.44	.37	.54	.44	.37	.43	.36	.32
9	.51	.40	.33	.50	.39	.33	.38	.32	.28
10	.48	.36	.29	.47	.36	.29	.35	.29	.25

