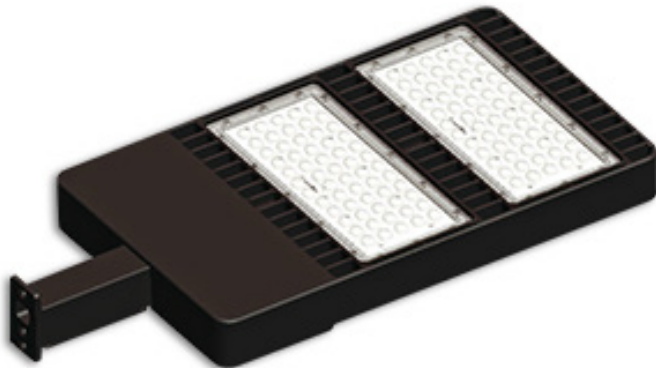


83522

LED SHOE BOX FIXTURE

TECHNICAL DATA SHEET

FEATURES



OUTDOOR POLE/ARM-MOUNTED AREA AND ROADWAY LUMINAIRES

- Elegant and modern appearance
- Hollow heat sink design, fixture is lighter with excellent heat dissipation.
- High quality Samsung Chips
- Meanwell Driver
- Lifespan of 50,000 hours or more
- IP65

APPLICATION

Parking lot, street and building perimeter lighting.

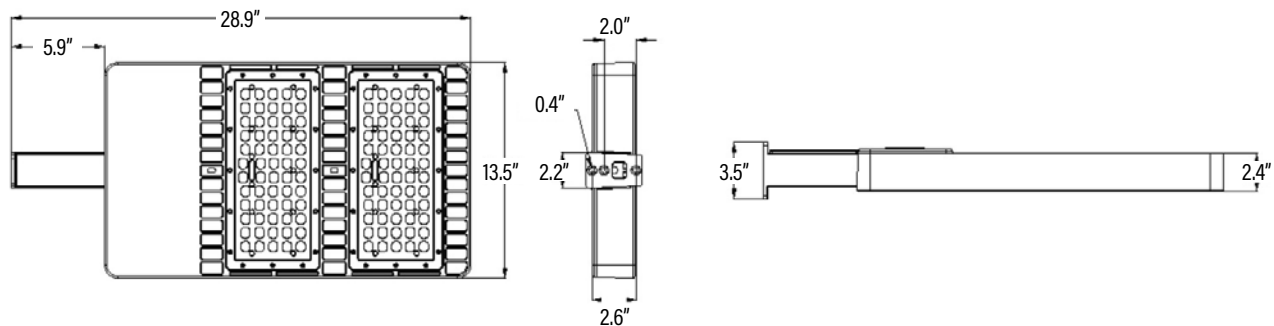


SPECIFICATIONS

Power Consumption	285W
Input Voltage	90-295V
Power Factor	0.9
THD	13.8
Lumens	30520
Luminous Efficiency	107 Lm/W
Color Temperature	5000K
CRI	87
Beam Angle	120°
Light Distribution	Type III
Finish	Bronze
Dimensions (Inches)	23"(L) x 13.5"(W) x 2.4"(H)
Weight	10kg / 22 lbs
LED	
LED Driver	Meanwell HLG-320H-42A
LED Type	Samsung
LED Quantity	120
LIFESPAN & ENVIRONMENT	
Average Life	50,000
Storage Temperature	-40°C ~ 50°C

DIMENSIONS

Adjustable bracket image with dimensions are on page 2.



ORDERING

ITEM#	DESCRIPTION	WATTS	COLOR	LUMENS	CRI	VOLT	HOUSING	HOURS	CASE
83522	LED SHOE BOX FIXTURE 285W/50K/90-295V/POLE/WALL MOUNT/BRONZE -	285	5000K	30520	87	90-295V	BRONZE	50,000	1
BRACKET OPTIONS									
83530	LED SHOE BOX FIXTURE FITTING - ADJUSTABLE SLIP FITTER/BRONZE								1
83610	ADAPTER FROM ROUND TO FLAT POLE/BRONZE								1
83612	ADAPTER TO MOUNT A SLIP FITTER ON A FLAT POLE OR WALL/BRONZE								1

Published lumens on LED products are approximate and may vary slightly.

83522

LED SHOE BOX FIXTURE

TECHNICAL DATA SHEET

ADJUSTABLE BRACKET

Item#: 83530

LED SHOE BOX FIXTURE FITTING- ADJUSTABLE SLIP FITTER

