

LED EC14-2000e

Part #: EFCL14DM/L/22W/1650/120D/30K/E/ETL Class: LED Ceiling Light



Product Description

LED EC14-2000e delivers superior brightness, valuable energy savings and long lasting performance. This LED Ceiling Light is ideal for ambient lighting due to its uniform ***Halogen White** light (3000K). Enjoy features such as: instant on, dimming options, shatter resistance, and mercury free.



Estimated Energy Cost: \$2.64 per year

*Note: Design, features and specifications subject to change without notice. Some features may not be available on all models.

Specifications

Input Power	Input Voltage	Lumen Output	Beam Angle	Center Beam	CCT
22 W	120V/60Hz	1650 lm	120°	N/A	3000 K
CRI	Luminous Efficacy	Power Factor	Input Current	Base/Cap	Lamp Lifespan
80	75 lm/W	0.9	0.01 A	NA	50,000 Hrs.

Product Features



Dimmable



Instant-On/Off

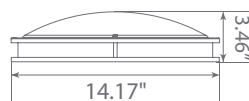
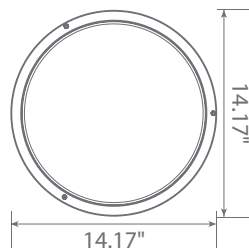


Mercury Free

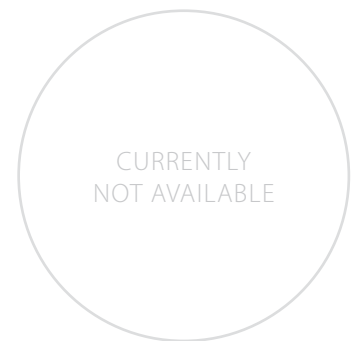


Damp Rated

Product Dimensions



Product Photometric Data



UNIT: cd
 — C0/180, 55.7, 58.3
 — C90/270, 54.7, 56.4