

## Fan Speed/Light Switch

**DVFSQ-LF**

120 V~ 60 Hz

P/N 0301852 REV A

120 W (1 A) CFL/LED

1.5 A Fan

240 W (2 A) Incand./Hal.

## Important Notes

### Please read before installing.

- Use DVFSQ-LF control with only one ceiling paddle fan per control. Not for use with DC motor fans.
- Do not wire an DVFSQ-LF in circuit with a GFCI or AFCI breaker/receptacle.
- CAUTION:** Use only with permanently installed ceiling fan fixtures with screw-in compact fluorescent, screw-in LED, halogen, or incandescent lamps. To avoid overheating and possible damage to other equipment, do not use to control receptacles, motor-driven appliances, or low-voltage transformer-supplied appliances.
- Install in accordance with all national and local electrical codes.
- When no "grounding means" exists in wallbox, the 2011 National Electrical Code® (NEC®) allows a control to be installed as a replacement if 1) a nonmetallic, noncombustible faceplate is used with non-metallic attachment screws or 2) the circuit is protected by a ground fault circuit interrupter (GFCI). When installing a control according to these methods, cap or remove green wire before screwing control into wallbox and use an appropriate faceplate such as Claro or Satin Colors series wallplates by Lutron.
- For indoor use only between 32 °F and 104 °F (0 °C and 40 °C).
- Clean dimmers with a soft damp cloth only. Do not use any chemical cleaners.

# For a fan with light(s) switched from one location

## 1 Before installing

Identify which switch controls the fan and which one controls the lights (only for lights and fans controlled from one location).

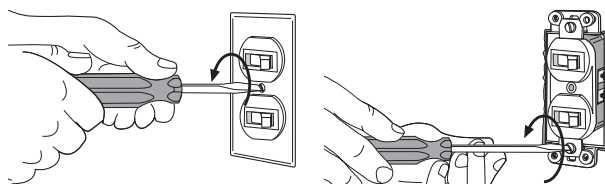
Set multispeed fans to their highest setting before installing controls.

## 2 Turn power OFF at circuit breaker



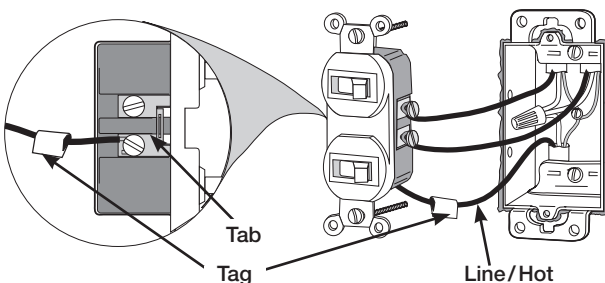
**WARNING: SHOCK HAZARD.** May result in serious injury or death. Turn off power at circuit breaker or fuse before installing.

## 3 Remove existing device



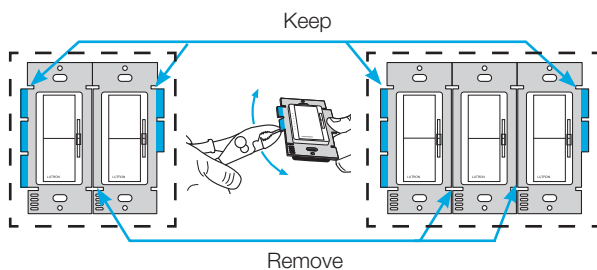
Tag the wire that is connected to the Line/Hot side of the switch (the side with the tab).

Disconnect the wires.

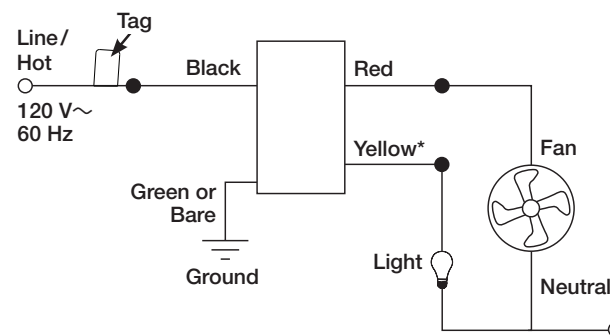
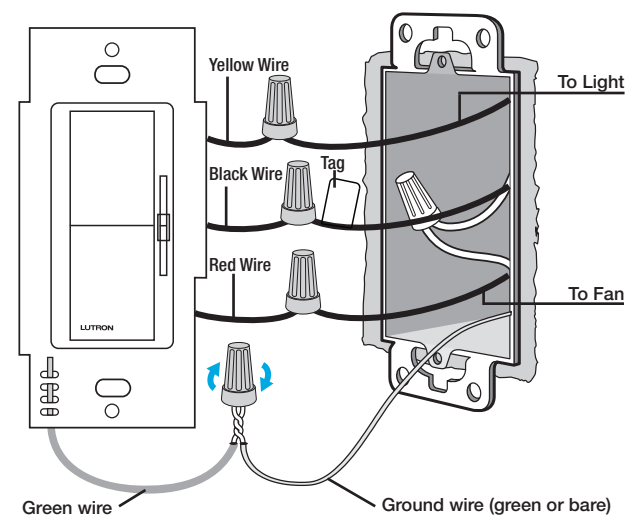


## 4 Remove middle sections (if ganging devices)

Remove middle sections if mounting 2 or more devices side by side. No derating is required when ganging this product.

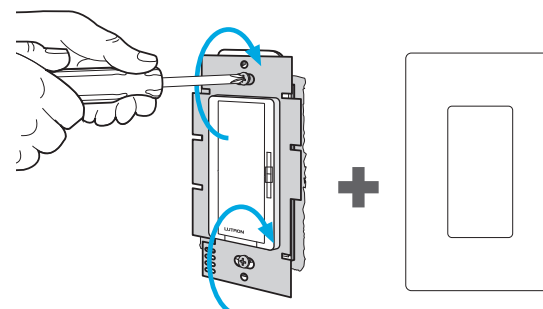


## 5 Connect the new control

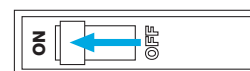


\* Cap the Yellow wire if it is a fan-only fixture (no lights).

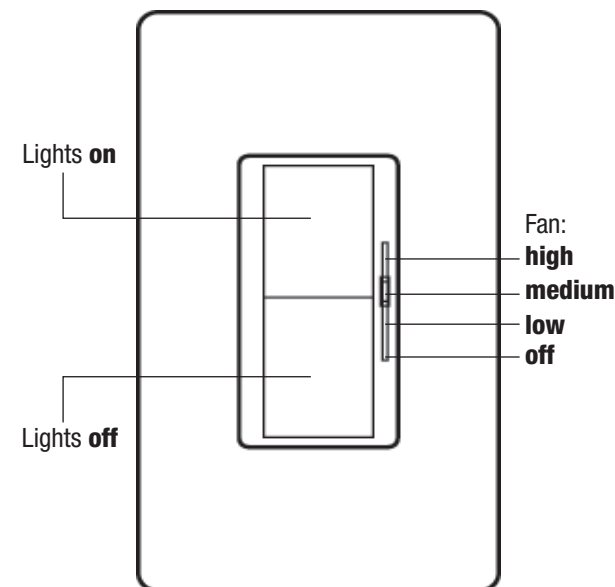
## 6 Mount the control using the provided screws



## 7 Turn power ON at circuit breaker



## OPERATION



©2016–2017 Lutron Electronics Co., Inc.

Lutron, Lutron, Claro, Satin Colors, and Diva, are trademarks of Lutron Electronics Co., Inc., registered in the U.S. and other countries.

## TROUBLESHOOTING

Problem	Solution
If the lights aren't working	Check the pull chain
If the fan is running too slow	Check the pull chain
If the switch turns the fan on	Swap the red and yellow wires