

LUTRON

Nova T[☆] 250 W

Reverse-Phase
(Electronic Low-Voltage)
Dimmer

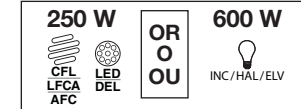
Model | Modelo | Modèle :
NTRP-250

LED/Compact Fluorescent/
Halogen/Incandescent/Electronic
Low-Voltage Dimmer

Atenuador para lâmpara fluorescente
compacta autobalastada/LED/halógeno/
incandescente/electrónico de bajo voltaje

Gradateur pour ampoules fluorescentes
compactes/à DEL/ampoules
incandescentes/halogènes/électronique
basse tension

120 V ~ 60 Hz



P/N 0301841 Rev. A
05/2017

Important Notes:

Please read before installing.

- CAUTION:** Use only with permanently installed fixtures with dimmable screw-in LED, dimmable screw-in compact fluorescent, halogen, incandescent lamps or electronic low-voltage transformers. To avoid overheating and possible damage to other equipment, do not use to control magnetic low-voltage transformers, receptacles, fluorescent lighting fixtures, motor-driven appliances, or transformer-supplied appliances.
- Install in accordance with all national and local electrical codes.
- When no "grounding means" exist in wallbox, National Electrical Code® (NEC®) allows a control to be installed as a replacement if 1) a nonmetallic, noncombustible faceplate is used with nonmetallic attachment screws or 2) the circuit is protected by a ground fault circuit interrupter (GFCI). When installing a control according to these methods, cap or remove green wire before screwing control into wallbox.
- This product requires a neutral wire in the wallbox. If a neutral wire is not present, contact a licensed electrician for installation.
- Use only to control the primary side of electronic transformer-supplied, low-voltage lighting, or in combination with incandescent lamps.
- For new installations, install a test switch before installing the Dimmer.
- Protect Dimmer from dust and dirt when painting or spackling.
- It is normal for the Dimmer to feel warm to the touch during operation.
- Clean dimmer with a soft damp cloth only. Do not use any chemical cleaners.
- For indoor use only.
- Controls must be mounted vertically. See stamp on control for correct positioning.
- DO NOT** swap the black and yellow wires or the LED dimming performance may be adversely affected.

English

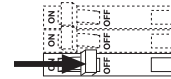
English

IMPORTANT

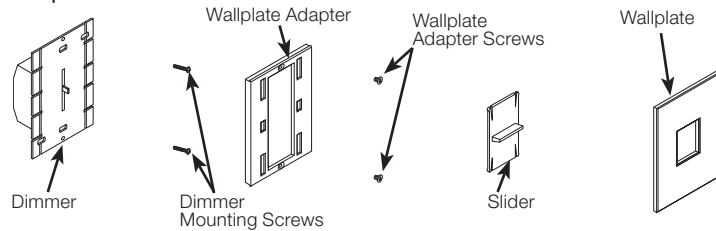
When using LEDs or CFLs with this dimmer, only bulbs marked or rated as DIMMABLE with Universal or Reverse-Phase Dimmers and on the [Lutron LED Report Card Tool \(www.lutron.com/ledtool\)](http://www.lutron.com/ledtool) can be used. For FAQs and a list of recommended DIMMABLE LEDs and CFLs please visit www.lutron.com/led. For further questions, please call our LED Center of Excellence at 1.877.DIM.LED8.

- Turn OFF power.

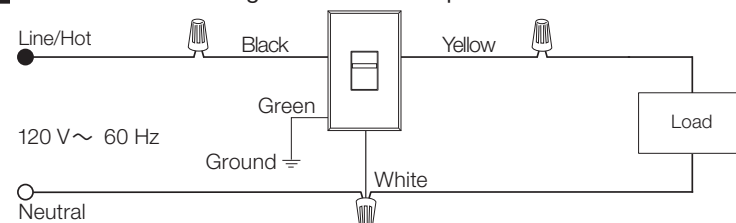
WARNING: Shock Hazard. May result in serious injury or death. Turn power OFF at circuit breakers before installing the unit.



- Remove the wallplate and slider and unscrew the wallplate adapter from the dimmer.



- Wire the dimmer using wire connectors provided.



Note: DO NOT swap the black and yellow wires or the LED dimming performance may be adversely affected.

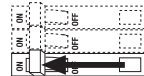
- Push wires into wallbox, allowing room for the dimmer to be inserted. Do not pinch wires between the wallbox and dimmer.

- Mount dimmer to wallbox using dimmer mounting screws provided. Dimmer must be mounted vertically. See arrow on dimmer for correct positioning.

- Mount wallplate adapter using wallplate adapter screws provided.

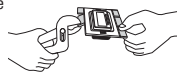
- Install Slider and Wallplate

- Turn ON Power.

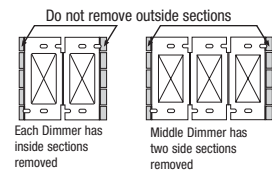


Multigang and Mixed-Bulb-Type Installation and Maximum Allowable Wattage

When installing more than one Dimmer in the same wallbox, it may be necessary to remove all inner side sections prior to wiring (see diagram). Removal of side sections may reduce maximum wattage, as shown in the chart below.



Mixing bulb types (*using a combination of LED/CFL, and Incandescent/Halogen bulbs) and removal of Dimmer side sections may reduce maximum wattage as shown in the chart below.



Total LED/CFL Wattage Installed (Wattage per bulb x # of bulbs)	+	Maximum Allowable Incandescent/Halogen Wattage*		
		A	B	C
0 W		600 W	500 W	400 W
1 W – 40 W		500 W	400 W	300 W
41 W – 80 W		400 W	300 W	200 W
81 W – 120 W		300 W	200 W	100 W
121 W – 160 W		200 W	100 W	50 W
161 W – 200 W		100 W	50 W	0 W
201 W – 250 W		0 W	0 W	0 W

Dimming Range Adjustment

IMPORTANT NOTES ABOUT YOUR DIMMER

When using LEDs or CFLs with this dimmer, ONLY bulbs marked or rated as DIMMABLE with Universal or Reverse-Phase Dimmers and on the Lutron LED Report Card Tool can be used.

- Most dimmable LEDs and CFLs will not achieve as low a light level as incandescent or halogen bulbs.
- The time to turn on and dimming range of dimmable LEDs and CFLs can vary from bulb to bulb and from manufacturer to manufacturer.
- For more information and FAQ's about dimmable LEDs and CFLs please visit www.lutron.com/led. You can also visit our Lutron Support Community at forums.lutron.com
- Electronic low-voltage dimmers: These dimmers are overload protected. If more than the rated load is applied, power to the circuit will shut off until the dimmer cools. If this happens, remove the excess load from the circuit.

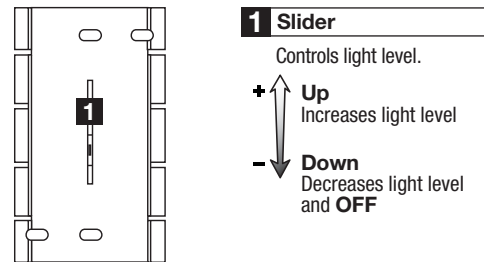
Visit www.lutron.com/led for:

- Recommended bulb list
- Videos
- FAQ
- Troubleshooting

Dimming Range Adjustment

1. Turn **ON** dimmer. Move **down** slider **1** to lowest light level and to **OFF**.

Figure 1: Dimmer Features



Troubleshooting

Symptom:

- Bulbs turn off while being dimmed.
- Bulbs turn on at high light level but do not turn on at a low light level, or take too long to turn on at low end.
- Bulbs flicker or flash when dimmed to a low light level.

Solution:

- Verify all bulbs are marked dimmable, and are on the LED Report Card Tool (www.lutron.com/ledtool).

Note: For more troubleshooting tips visit www.lutron.com/led

Limited Warranty

(Valid only in the U.S.A., Canada, Puerto Rico, and the Caribbean.)

Lutron will, at its option, repair or replace any unit that is defective in materials or manufacture within one year after purchase. For warranty service, return unit to place of purchase or mail to Lutron at 7200 Suter Rd., Coopersburg, PA 18036-1299, postage pre-paid.

This warranty is in lieu of all other express warranties, and the implied warranty of merchantability is limited to one year from purchase. This warranty does not cover the cost of installation, removal or reinstallation, or damage resulting from misuse, abuse, or damage from improper wiring or installation. This warranty does not cover incidental or consequential damages.

LUTRON'S LIABILITY ON ANY CLAIM FOR DAMAGES ARISING OUT OF OR IN CONNECTION WITH THE MANUFACTURE, SALE, INSTALLATION, DELIVERY, OR USE OF THE UNIT SHALL NEVER EXCEED THE PURCHASE PRICE OF THE UNIT.

This warranty gives you specific legal rights, and you may have other rights which vary from state to state. Some states do not allow the exclusion or limitation of incidental or consequential damages, or limitation on how long an implied warranty may last, so the above limitations may not apply to you.

Lutron and Nova T☆ are trademarks of Lutron Electronics Co., Inc., registered in the U.S. and other countries.

NEC is a registered trademark of the National Fire Protection Association, Quincy, Massachusetts.

© 2017 Lutron Electronics Co., Inc.