



# FlexTool User Guide

Programing the AFlex Driver Line with the FlexTool



## TABLE OF CONTENTS

<b>Introduction</b>	Page 1
<b>Installing the Flextool Software</b>	Page 2
<b>Operating the Flextool Programming Device</b>	Page 4
<b>Preventions &amp; Caution</b>	Page 5
<b>Creating New Profile</b>	Page 6
<b>Loading Saved Profile</b>	Page 8
<b>Profile List Screen</b>	Page 10
<b>Programming The Driver</b>	Page 11
<b>Reading the Profile from an AFlex Driver</b>	Page 14

# 1. Introduction

This user guide will assist in programming the AFlex Driver Line.  
To start please have the following ready:

## FlexTool Software



## FlexTool Programming Device / NFC PAD



## USB-A to USB-B cable to connect the PC to the FlexTool Programming Device



## AFlex LED Driver



## 2. Installing the FlexTool Software

### 2.1. Minimum requirements for the FlexTool Software

- Windows PC or laptop
- Microsoft Windows 7 / 10
- One USB 2.0 port
- At least 20 MB of free disk space
- Microsoft .NET Framework 4.0 SP1

### 2.2 Options to download the FlexTool Software from the link:

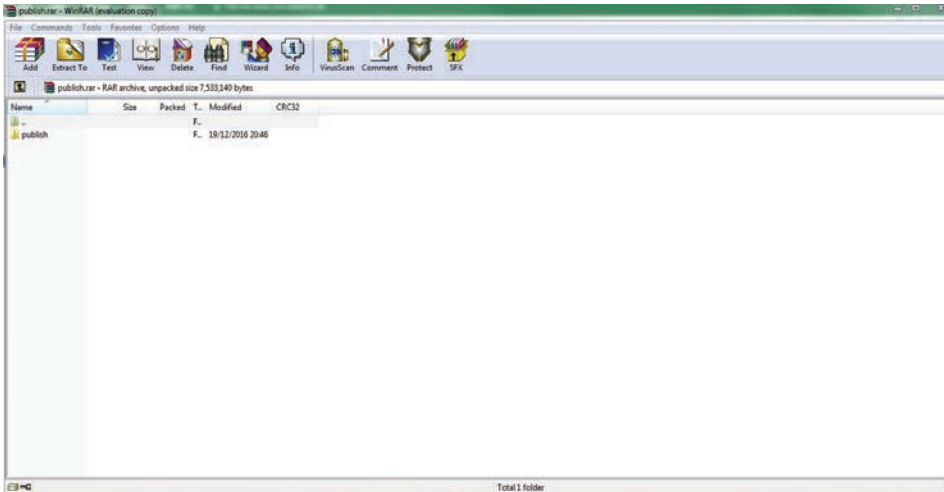
[www.magnitudeinc.com/media/Flextool\\_aflex\\_programming\\_tool.zip](http://www.magnitudeinc.com/media/Flextool_aflex_programming_tool.zip)

### 2.3 Installing the FlexTool Software

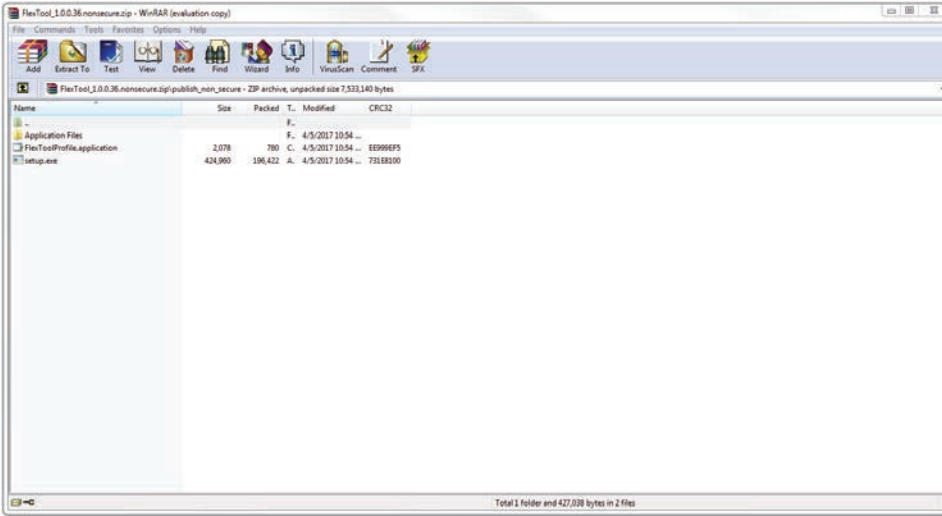
To Install the FlexTool Software, please follow the instructions below.

The wizard will guide through the installation process and will automatically create a shortcut on your desktop.

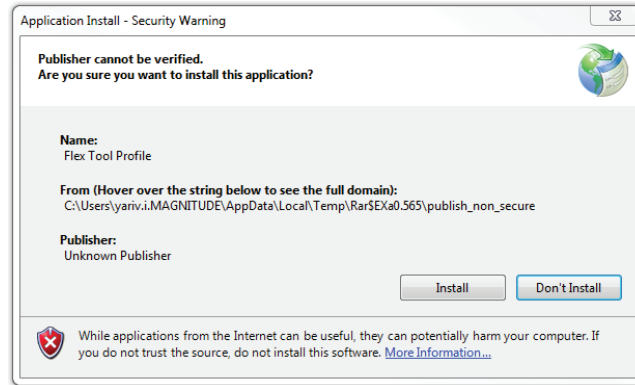
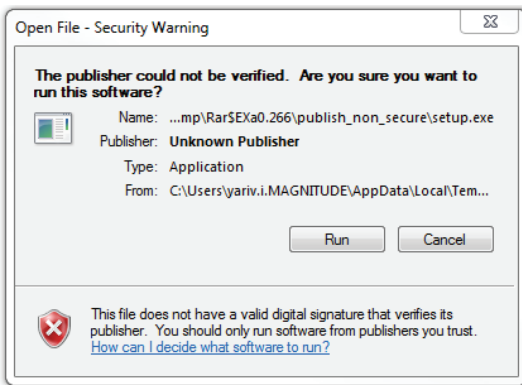
a) Open the .rar file.



b) Double click on the publish file.



c) Open the setup.exe file, press “Run” and then “Install”.



d) A Shortcut is created on the desktop.



## 3. Operating the FlexTool Programming Device

a) Connect the FlexTool Programming Device to your PC via the USB cable.



b) Open the FlexTool Software and follow the instructions.

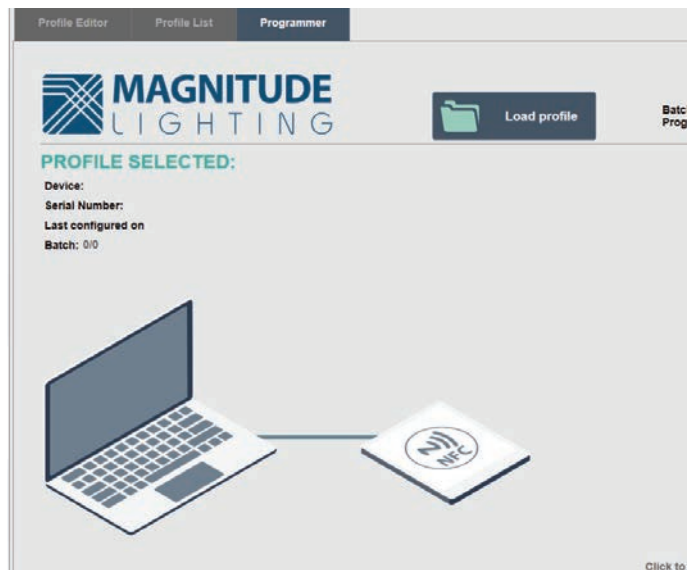
## 4. Preventions & Caution

- DO NOT connect the AFlex LED Driver to power during programming.
- The FlexTool Software must be restarted if the FlexTool Programming Device disconnects from the computer or the NFC itself.
- Reconnect the FlexTool Programming Device to the USB cable to ensure all of connections are securely in place.
- The FlexTool Software will indicate when disconnection occurs by showing a grey line connected from the NFC Pad (FlexTool Programming Device) to the computer.
- The indication that the NFC Pad (FlexTool Programming Device) and computer are connected and are in working order is by showing a green line connected from the NFC Pad (FlexTool Programming Device) to the computer.

The FlexTool Programming Device is **Connected**

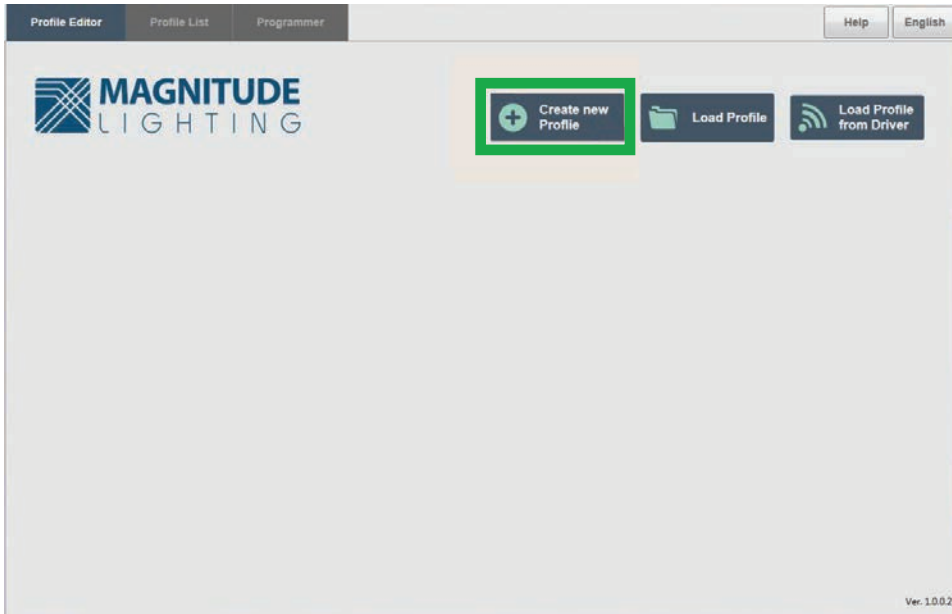


The FlexTool Programming Device is **Disconnected**

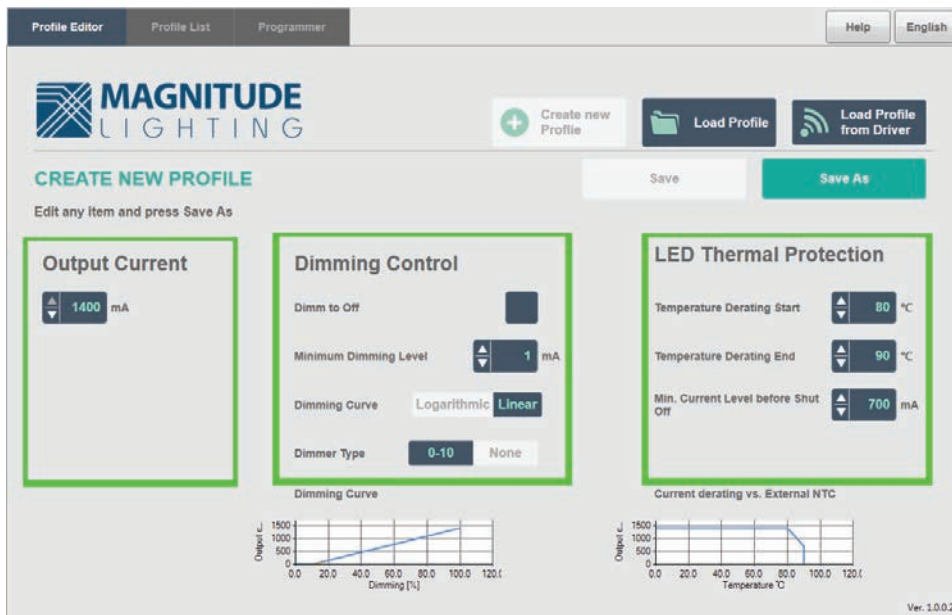


## 5. Creating New Profile

- a) Open the FlexTool Software from the shortcut created on your desktop.
- b) Select the "Profile Editor" tab and press "Create New Profile".

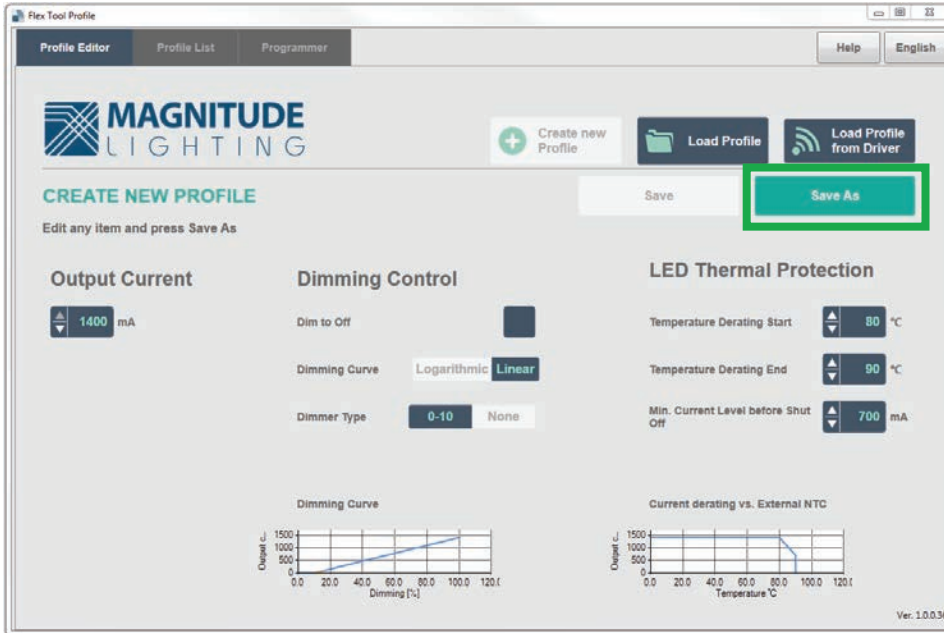


- c) Adjust the parameters accordingly.

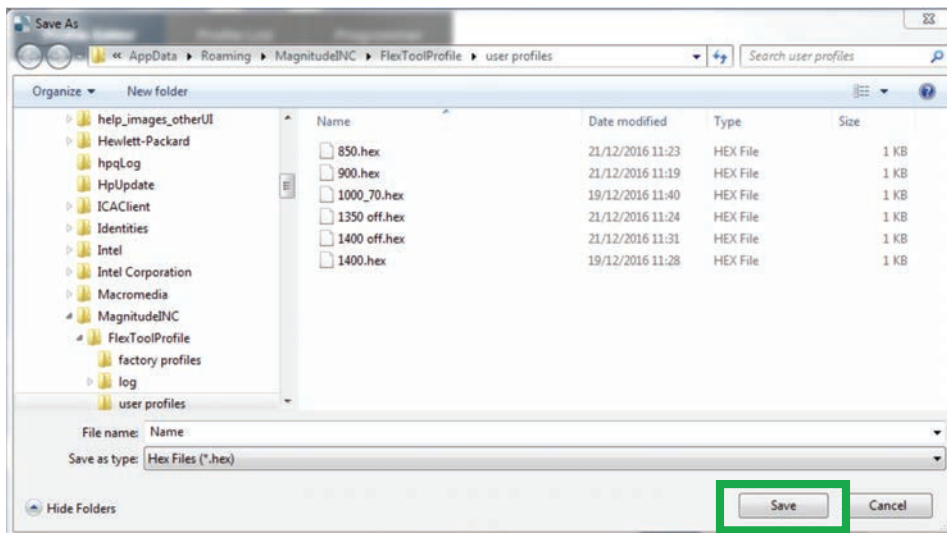




d) Press "Save As".

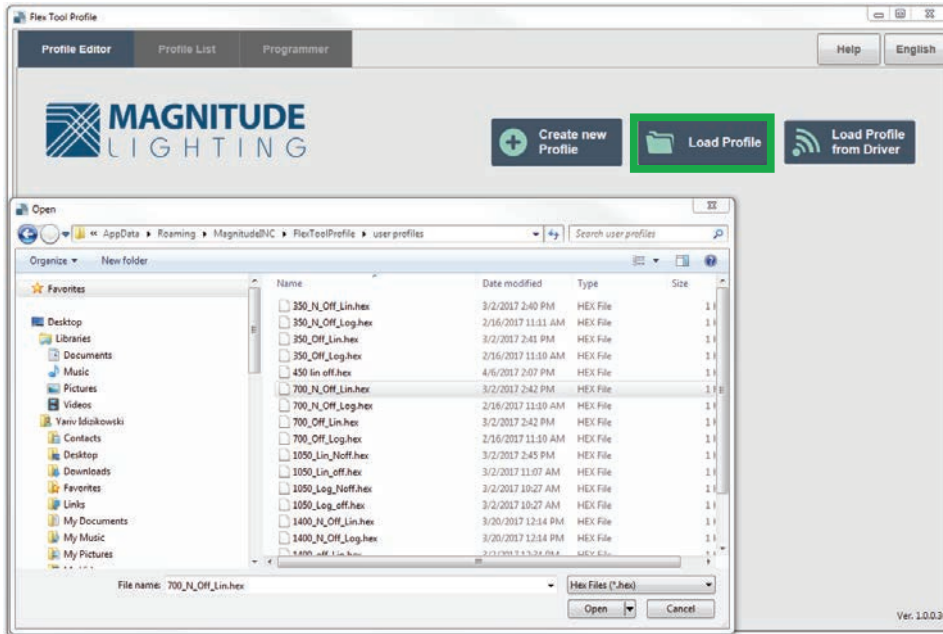


e) Create a new profile name and Press "Save".

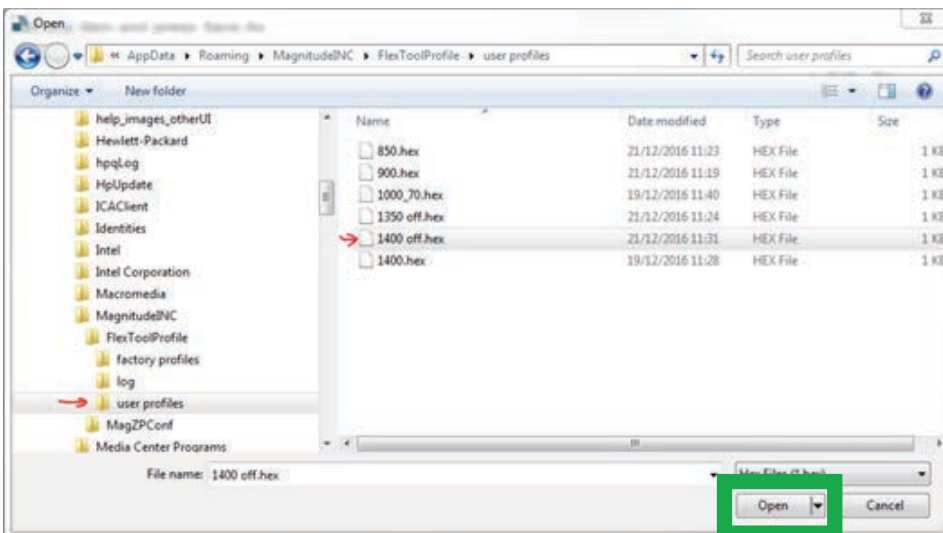


## 6. Loading Saved Profile

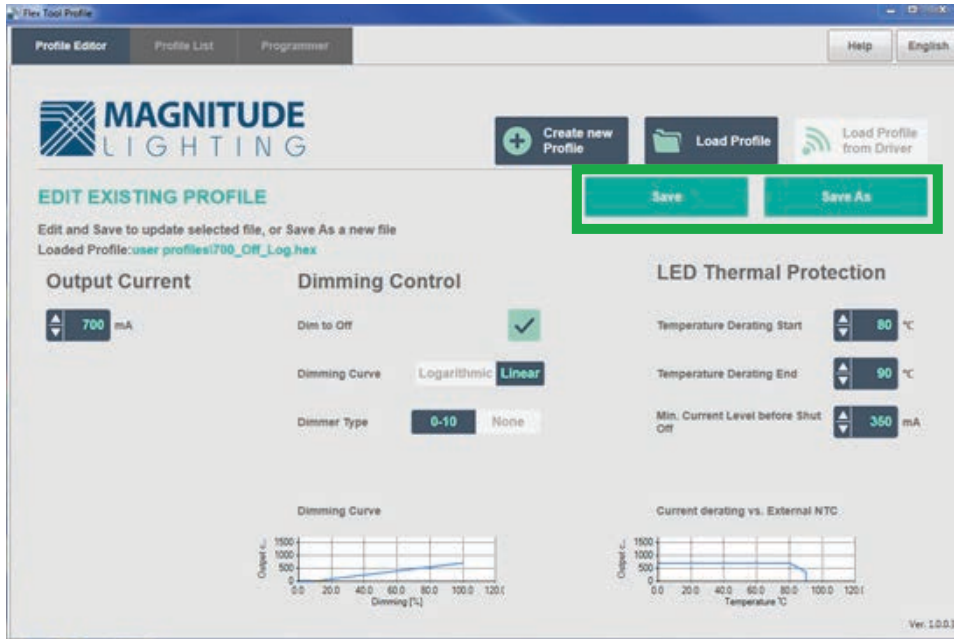
a) Press "Load Profile".



b) Select a profile and press open.



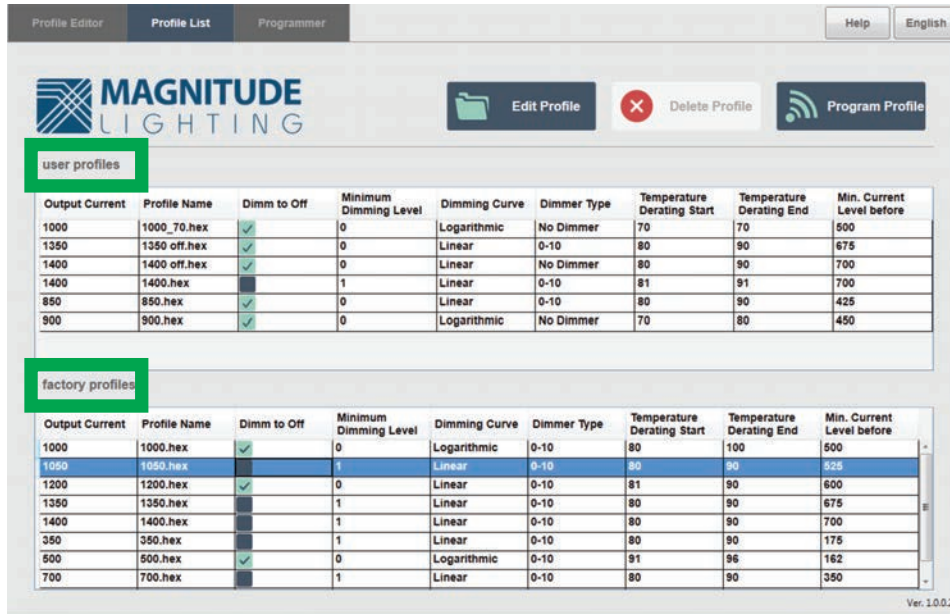
c) Make any necessary changes to the parameters (the “Save” button will turn green if any changes are made).



## 7. Profile List Screen

The Profile List screen contains all factory preset profiles along with the user saved profile files. In the Profile List screen, you can delete or change profiles according to your specifications. Thereafter selecting a profile, it will lead directly to the programming screen to finalize the programming stage.

a) Select a profile from the user profile list or a factory preset profiles.



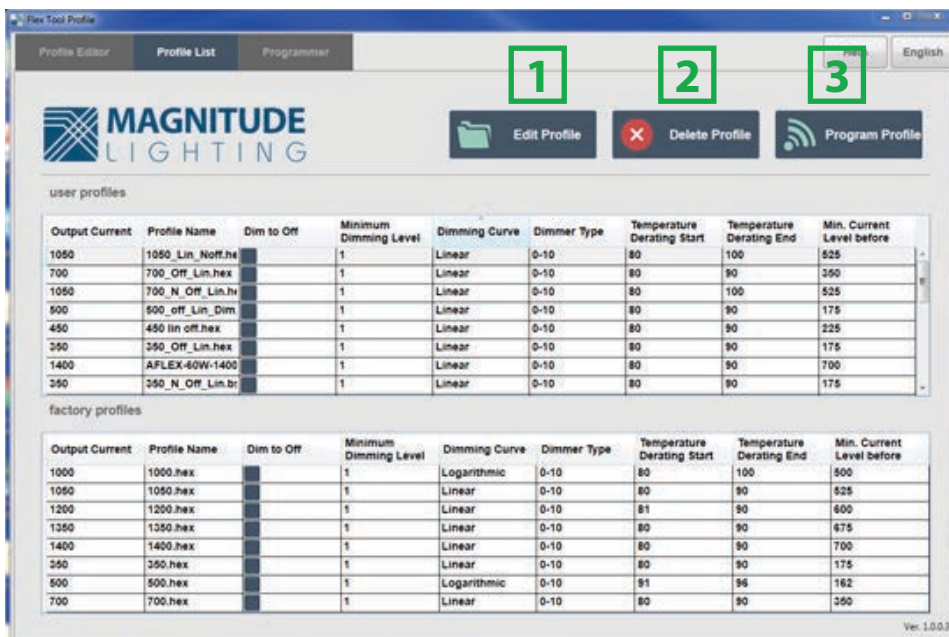
The screenshot shows the Profile List screen with two sections: 'user profiles' and 'factory profiles'. Each section contains a table with columns: Output Current, Profile Name, Dimm to Off, Minimum Dimming Level, Dimming Curve, Dimmer Type, Temperature Derating Start, Temperature Derating End, and Min. Current Level before.

Output Current	Profile Name	Dimm to Off	Minimum Dimming Level	Dimming Curve	Dimmer Type	Temperature Derating Start	Temperature Derating End	Min. Current Level before
1000	1000_70.hex	<input checked="" type="checkbox"/>	0	Logarithmic	No Dimmer	70	70	500
1350	1350 off.hex	<input checked="" type="checkbox"/>	0	Linear	0-10	80	90	675
1400	1400 off.hex	<input checked="" type="checkbox"/>	0	Linear	No Dimmer	80	90	700
1400	1400.hex	<input checked="" type="checkbox"/>	1	Linear	0-10	81	91	700
850	850.hex	<input checked="" type="checkbox"/>	0	Linear	0-10	80	90	425
900	900.hex	<input checked="" type="checkbox"/>	0	Logarithmic	No Dimmer	70	80	450

Output Current	Profile Name	Dimm to Off	Minimum Dimming Level	Dimming Curve	Dimmer Type	Temperature Derating Start	Temperature Derating End	Min. Current Level before
1000	1000.hex	<input checked="" type="checkbox"/>	0	Logarithmic	0-10	80	100	500
1050	1050.hex	<input checked="" type="checkbox"/>	1	Linear	0-10	80	90	525
1200	1200.hex	<input checked="" type="checkbox"/>	0	Linear	0-10	81	90	600
1350	1350.hex	<input checked="" type="checkbox"/>	1	Linear	0-10	80	90	675
1400	1400.hex	<input checked="" type="checkbox"/>	1	Linear	0-10	80	90	700
350	350.hex	<input checked="" type="checkbox"/>	1	Linear	0-10	80	90	175
500	500.hex	<input checked="" type="checkbox"/>	0	Logarithmic	0-10	91	96	162
700	700.hex	<input checked="" type="checkbox"/>	1	Linear	0-10	80	90	350

1. Press the Edit Profile icon key to change the parameters – this will lead you to the Profile Editor screen.
2. Delete the Profile.
3. Program profile – this will transfer you to programming screen.



The screenshot shows the Profile List screen with three numbered callouts: 1 points to the 'Edit Profile' button, 2 points to the 'Delete Profile' button, and 3 points to the 'Program Profile' button.

Output Current	Profile Name	Dim to Off	Minimum Dimming Level	Dimming Curve	Dimmer Type	Temperature Derating Start	Temperature Derating End	Min. Current Level before
1050	1050_Lin_NoFF.he	<input checked="" type="checkbox"/>	1	Linear	0-10	80	100	525
700	700_Off_Lin.hex	<input checked="" type="checkbox"/>	1	Linear	0-10	80	90	350
1050	700_N_Off_Lin.hi	<input checked="" type="checkbox"/>	1	Linear	0-10	80	100	525
500	500_off_Lin_Dim	<input checked="" type="checkbox"/>	1	Linear	0-10	80	90	175
450	450 lin off.hex	<input checked="" type="checkbox"/>	1	Linear	0-10	80	90	225
350	350_Off_Lin.hex	<input checked="" type="checkbox"/>	1	Linear	0-10	80	90	175
1400	AFLEX-40W-1400	<input checked="" type="checkbox"/>	1	Linear	0-10	80	90	700
350	350_N_Off_Lin.br	<input checked="" type="checkbox"/>	1	Linear	0-10	80	90	175

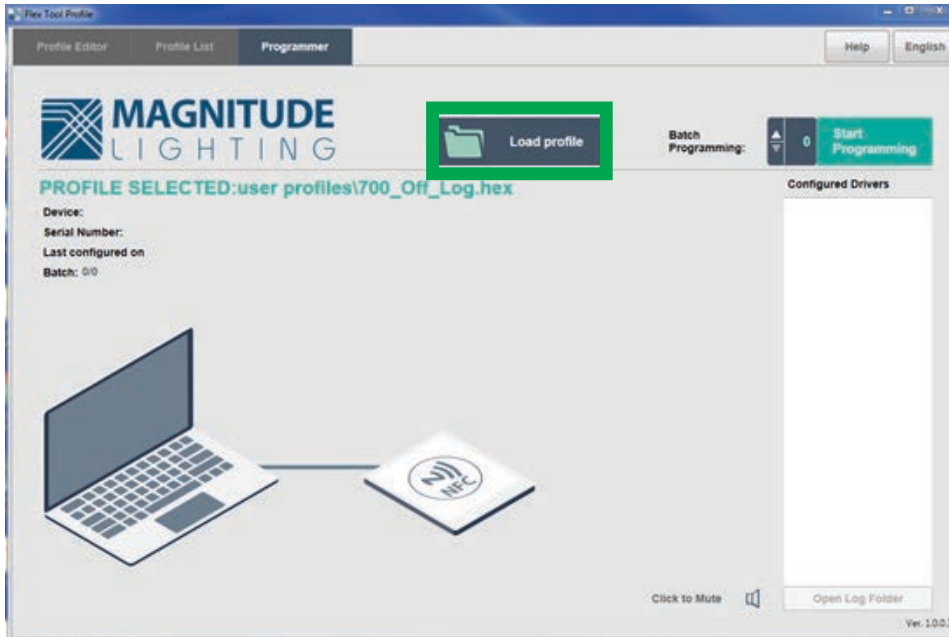
  

Output Current	Profile Name	Dim to Off	Minimum Dimming Level	Dimming Curve	Dimmer Type	Temperature Derating Start	Temperature Derating End	Min. Current Level before
1000	1000.hex	<input checked="" type="checkbox"/>	1	Logarithmic	0-10	80	100	500
1050	1050.hex	<input checked="" type="checkbox"/>	1	Linear	0-10	80	90	525
1200	1200.hex	<input checked="" type="checkbox"/>	1	Linear	0-10	81	90	600
1350	1350.hex	<input checked="" type="checkbox"/>	1	Linear	0-10	80	90	675
1400	1400.hex	<input checked="" type="checkbox"/>	1	Linear	0-10	80	90	700
350	350.hex	<input checked="" type="checkbox"/>	1	Linear	0-10	80	90	175
500	500.hex	<input checked="" type="checkbox"/>	1	Logarithmic	0-10	91	96	162
700	700.hex	<input checked="" type="checkbox"/>	1	Linear	0-10	80	90	350

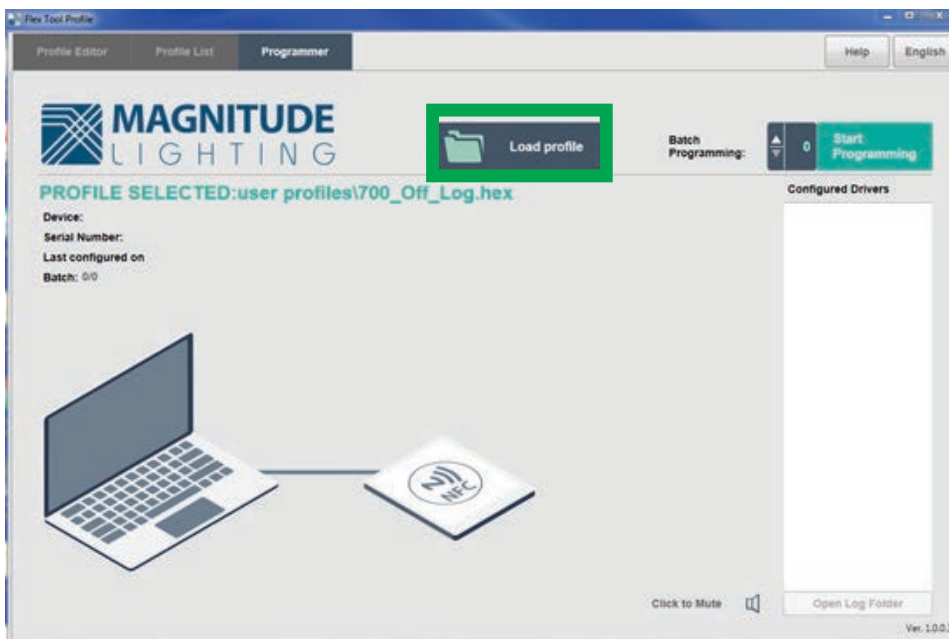
## 8. Programming the Driver

The following instructions will show you how to program the AFlex LED Driver:

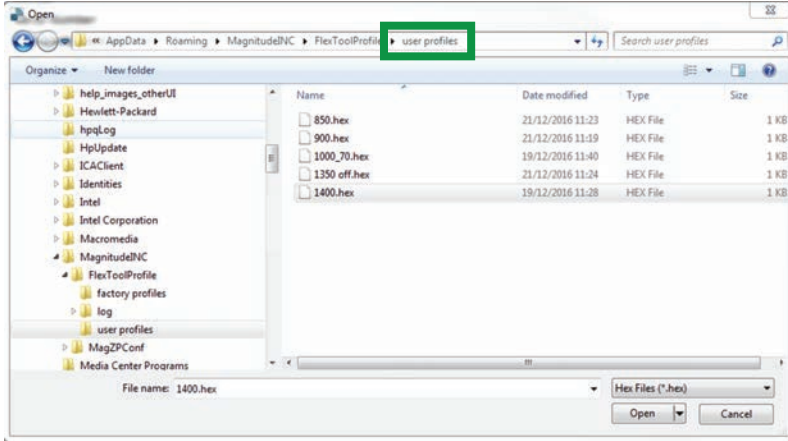
a) Press on "Programmer Tab" located at the top left of the screen and then press "Load Profile".



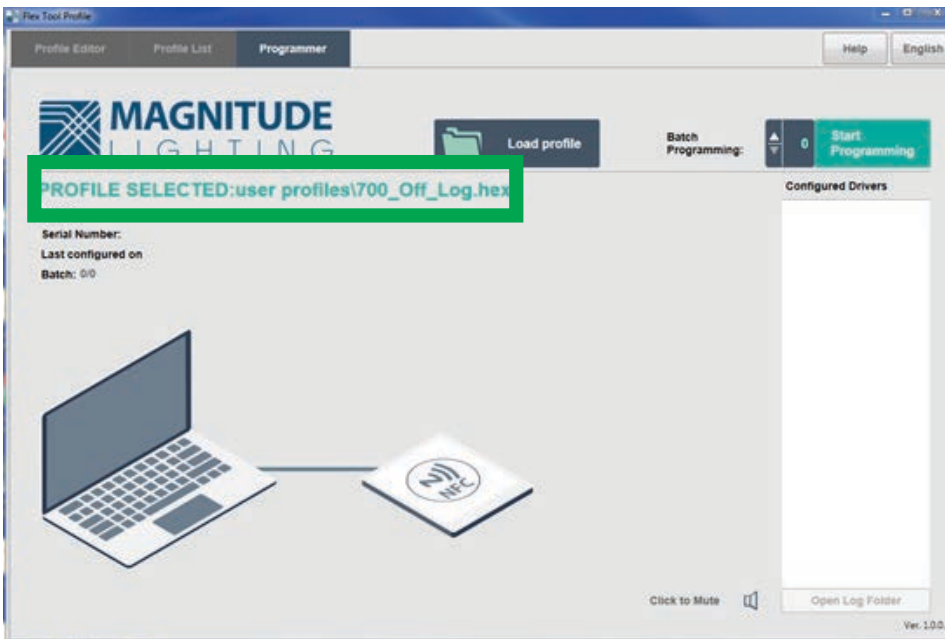
b) To load a profile from the directory press on the "Load Profile" button ->Which will open the 'FlexTool Profile' directory -> Then press User Profiles.



c) Select the required Profile by double clicking the profile or you may select the profile and press "Open".

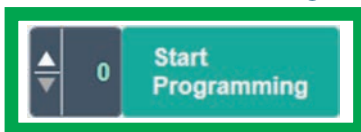


d) Please notice that there will be an indication for the profile you selected as you can see per the diagram below.



e) You may set the unit amount of drivers being programmed in the Batch Programming field. or by pressing the arrows buttons on the left side of the "Start Programming" Field.

f) Press the "Start Programming" Button.



**Now the driver is ready to configure.**

**Note: Disconnect the AFlex LED Driver from power before programming.**

Touch and hold the AFlex LED Driver to the FlexTool Programming Device (General information of the AFlex LED Driver appears on the upper left side of the screen).

The FlexTool Software has two successful programming indications:

1. Beep sound.
2. Programing done pop-up.

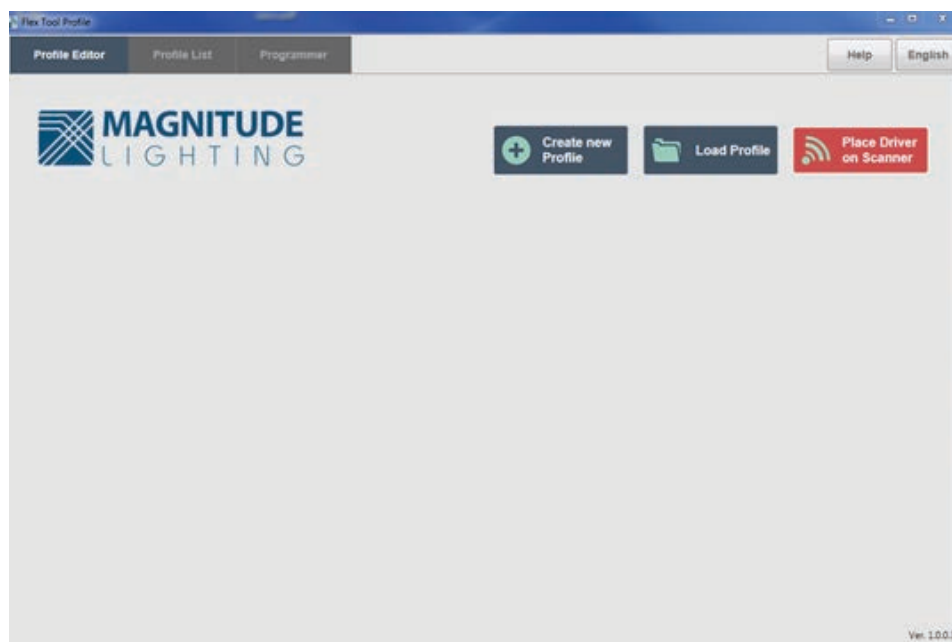
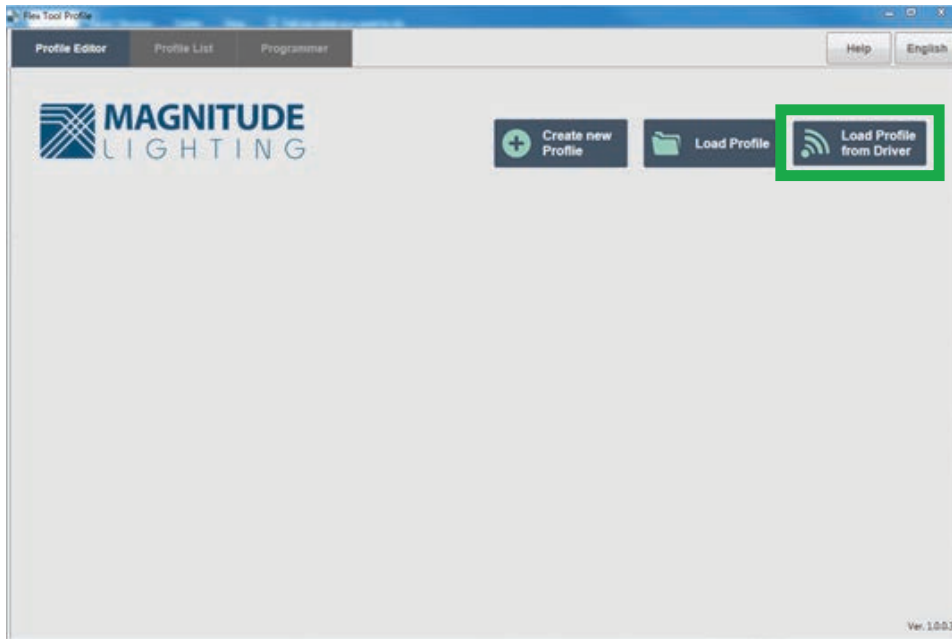
Please notice that you can stop programming at any time by pressing the “Stop Programming button”



## 9. Reading the Profile from an AFlex Driver

If you would like to read the parameters of an AFlex LED Driver, you can do so only one driver at a time.

a) Press "Load Profile from Driver" button, the icon will turn to red which indicates that the program is ready to upload the parameters from the driver.





b) Simply tap the AFlex LED Driver to the FlexTool Programming Device and parameters will upload automatically. Once completed the color of the “Load Profile from Driver” icon button will change to dark gray, the parameters then can be adjusted per your needs. Directions for programming a new profile can be found on section 9.

