



# Surge Protection



# Power Disturbances

Lightning and fluctuations in utility power (caused by grid switching, for example) are often assumed to be the main sources of power disturbances. However, the overwhelming cause is actually equipment, such as motors and appliances, turning on and off. Even simply switching lights on and off will cause electrical surges. In fact, it is estimated that 65% of all transient voltage surges are generated from inside sources, while only 35% come from outside.

As of September 30, 2009 ANSI/UL 1449 3rd Edition replaced UL1449 2.5. Surge Protection Devices (SPDs) manufactured after September 30, 2009 need to meet ANSI/UL 1449 3rd Edition 3.0. Any products manufactured before this date may still be sold as a UL 1449 2.5 compliant product. Due to increased use of electrical devices in residential, commercial and industrial markets, ANSI/UL 1449 3rd Edition was adopted. Electrical components in devices such as computers, security systems, home theater systems and factory equipment are susceptible to transient over voltage and can create significant downtime, equipment replacement and costly repairs. As a result, "Surge Protectors" will now be known as "Surge Protection Devices" (SPD) and are reclassified into Type 1, Type 2 and Type 3 SPDs.

## Key Causes of Transients

- Variable Frequency Drives
- Utility Accidents
- AC Chillers
- Utility Switching
- Pumps & Motors
- Lightning

## Applications

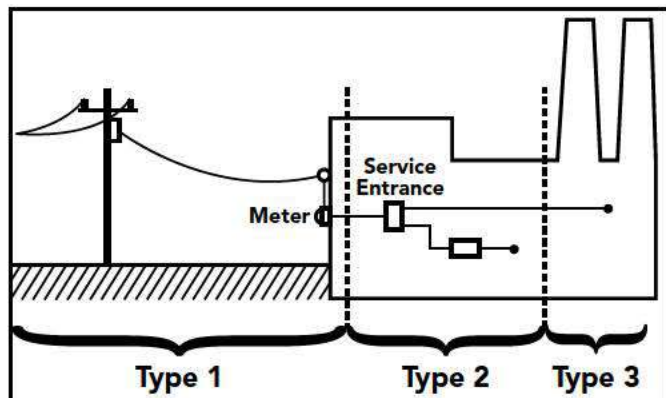
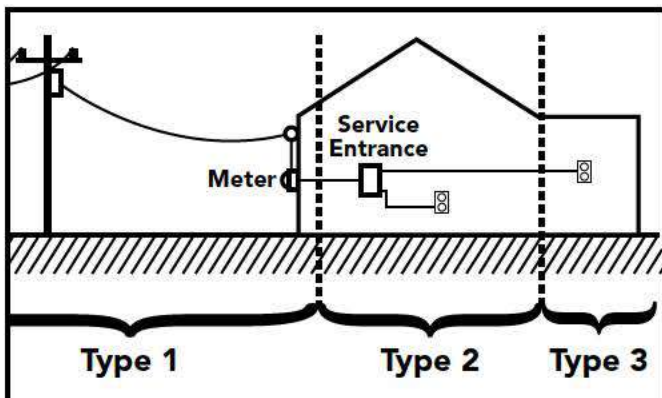
- Manufacturing
- Education/ University
- Utility
- Residential
- Financial Institutions
- Restaurants
- Retail

## Protection For

- HVAC/R Controls
- Security Systems
- Lighting Ballasts
- Computer / Peripherals
- Pumps & Motors
- Network Servers / Routers / Modems
- Fire Alarms Systems

## Location Variables That Increase the Risk of External Transients

- At the end of a utility line
- On a transmission line downstream of industrial facilities
- At a higher elevation than surrounding structures
- An open rural location
- High lightning activity



### TYPE 1:

Permanently connected SPD which is intended to be installed between the secondary transformer and the line side of the service equipment.

### TYPE 2:

Permanently connected SPD which is intended to be installed on the load side of the service equipment overcurrent device.

### TYPE 3:

Cord connected SPD which is intended to be installed at the point of use.

# Surge Protection Devices- Panel Guard®

## Features

- Hardwired models provide greater capacity to handle surge energy (based on their close location to the service ground) compared to standard plug-in strips
- Designed for 120/240 volt single or split-phase panels
- Green LED indicator provides surge protection status
  - ON: Energized and providing protection
  - OFF: May still be energized but protection has been diminished and the unit should be replaced
- 6 Modes of Surge Protection (L1-N, L2-N, L1-G, L2-G, N-G, L1-L2)



### IG1300-2T-1C3

- Provides protection for 2 Telephone Lines (Analog Phone Line, Modem, or DSL) and 1 Coax Line (Cable TV, Cable Internet or Satellite TV)
- CSA Listed to ANSI/UL 1449 3rd Edition
- Type 2 applications
- NEMA 3R Outdoor Raintight Enclosure for indoor or outdoor installations (9.38"H x 5.25"W x 4.0"D)
- 5 year warranty
- Connected Equipment coverage \$10,000 for 5 years



### IG1300-4T-2C3

- Provides protection for 4 Telephone Lines (Analog Phone Line, Modem, or DSL) and 2 Coax Lines (Cable TV, Cable Internet or Satellite TV)
- CSA Listed to ANSI/UL 1449 3rd Edition
- Type 2 applications
- Type 3R Outdoor Raintight Enclosure for indoor or outdoor installations (9.38"H x 5.25"W x 4.0"D)
- 5 year warranty
- Connected Equipment coverage \$10,000 for 5 years



### IG1240RC3

- NEMA 3R Outdoor Raintight Enclosure for indoor or outdoor applications
- Plastic housing (5.65"H x 4.18"W x 3.33"D)
- 5 year product warranty
- CSA Listed to ANSI/UL 1449 3rd Edition
- Type 1 or 2 applications
- 5 year warranty
- Connected Equipment coverage \$10,000 for 5 years



### IG3240RC3

- NEMA 3R Outdoor Raintight Enclosure for indoor or outdoor applications
- Metal housing (6.28"H x 4.4"W x 3.25"D)
- CSA Listed to ANSI/UL 1449 3rd Edition
- Type 1 or 2 applications
- 10 year warranty
- Connected Equipment coverage \$25,000 for 5 years



### IG3240FMP3

- Includes faceplate, screws and mounting bracket for IG3240RC
- 4" x 30" 12-gauge color coded leads for the IG1240RC3 or IG3240RC3
- 4" x 24" 12-gauge color coded leads for the IG1300-2T-1C3 or IG1300-4R-2C3



### IG1240FMP3

- Includes faceplate, screws and mounting bracket for IG1240RC3

# Surge Protection Devices-Arrester Guard®

## Features:

- Designed for outdoor installations on service entrances and utility meter cabinets
- Approved for outdoor applications such as irrigation equipment, pumps, lighting fixtures, traffic signaling devices, farm equipment, HVAC controls and motors
- Parallel metal oxide varistors (MOV) from each line to grounded neutral provide increased product capability
- Molded polycarbonate housing with 1/2" x 20 threaded nipple is weatherproof and UV resistant
- Epoxy encapsulation protects components from moisture, dirt and corrosion
- Color coded 18" leads; AG6503L3 – 36" leads
- 1 year product warranty



## Wye Configuration:

### AG2401C3, AG24013

- 120/240 single phase, 2 pole 3 wire device
- 18" 12 gauge leads

### AG2083C3

- 120/208 VAC, 3 pole 4 wire device
- 18" 12 gauge leads

### AG48013

- 277/480 VAC single phase, 2 pole 3 wire device
- 18" 10 gauge leads
- 18" 6 gauge green ground lead
- 18" 12 gauge leads

### AG4803C3

- 277/480 VAC or 480 VAC, 3 pole 4 wire device
- 18" 12 gauge leads

### AG6503C3, AG6503L3, AG65033

- Up to 600 V three phase, 3 pole 4 wire device
- 18" 12 gauge leads (AG65033, AG6503C3)
- 36" 10 gauge leads (AG6503L3)

## Delta Configuration:

### AG2403D3

- 240 VAC, three phase, 3 pole 3 wire device

### AG4803D3

- 277/480 VAC, three phase, 3 pole 3 wire device

## High-Leg Delta Configuration:

### AG2403C3

- 240 VAC, 3 pole 4 wire device
- 18" 12 gauge leads



# Type 3 Surge Protection Devices

## Features

- Type 3 SPD (Surge Protection Device)
- Designed for heavy industrial use
- 14 gauge SJT power cord with molded plug
- 3-mode Surge Protection (L-N, L-G, N-G)
- Protection monitoring circuitry with LED light indicator
- CSA Listed to ANSI/UL1449 3rd Edition
- 15 amp resettable breaker
- Ivory metal housing (except 1G112663BLK10)



### IG112463

- Lighted On/Off switch
- 5 year warranty
- Connected Equipment coverage \$10,000 for 5 years



### IG112663

- Lighted On/Off switch
- 5 year warranty
- Connected Equipment coverage \$10,000 for 5 years



### IG112663BLK10

- Black metal housing
- Lighted On/Off switch
- 5 year warranty
- Connected Equipment coverage \$10,000 for 5 years



### IG20663 & IG206153

- 6 specification-grade outlets
- EMI/RFI noise filtration
- Master On/Off switch
- 5 year warranty
- Connected Equipment coverage \$25,000 for 5 years



### IG20B123 & IG2012B153

- 6 specification-grade outlets
- Master On/Off switch
- EMI/RFI noise filtration
- 5 year warranty
- Connected Equipment coverage \$5,000 for 5 years



### IG20863

- 8 specification-grade outlets
- Master On/Off switch
- EMI/RFI noise filtration
- 5 year warranty
- Connected Equipment coverage \$25,000 for 5 years



### Mounting Bracket Plate 24EG5133

- Secures mounting bracket for all IG strips

NOTE: Cord Lengths can be modified up to 25 feet. Consult Sales Representatives for pricing and availability.

CSA Listed to ANSI/UL 1449 3rd Edition

# Surge Protection Devices

## Stand Alone Telephone / Modem / DSL Internet Lines



### IG2TM

- Provides protection for 2 lines
- Tip to Ground, Tip to Ring and Ring to Ground Modes
- 40 kA surge protection per line
- Gas Tube Protection 350 Volt DC Breakdown
- UL497A
- NEMA 1 Enclosure



### IG4TM

- Protection same as IG2TM
- Protects 4 Lines



### IG2T3R

- Protection same as IG2TM
- Provides protection for 2 lines (expandable to 12 Lines)
- NEMA 3R Enclosure

## Stand Alone Local Antenna/Cable - Satellite/Cable Internet Protection



### IG1CM

- Provides Protection for 1 Line (Expandable to 2 Lines)
- 10 kA surge protection per line
- Gas Tube Protection 90 Volt DC Breakdown



### IG1C3R

- Protection same as IG1CM
- Provides Protection for 1 Line (Expandable to up to 6 Coax Lines)
- NEMA 3R Enclosure



### IG2T

- Spare Telephone / Modem / DSL Internet Protection Module
- 2 Lines
- For use in IG2TM, IG1CM, IG2T3R, IG1C3G, IG1300-2T-1C



### IG1C

- Spare Coax Cable Protection Module
- 1 line
- For use in IG1CM, IG1C3R, IG2TM, IG4TM, IG2T3R



### IG Flush Mount Kit

- Flush mount kit for IG2TM, IG4TM, and IG1CM

Cable TV / Internet / Satellite				
Model #	Lines	Thread Type	DC Breakdown	Location
IG1CM	1	F	90 VDC	Indoor
IG1C3R	1 Standard (up to 6)	F	90 VDC	Indoor / Outdoor

CSA Listed to ANSI/UL 1449 3rd Edition



SCCR = Short Circuit Current Rating  
VPR = Voltage Protection Rating

Surge Protection Devices-Panel Guard®										
Old Model #	New Model #	Service Voltage	Phase	Leads#/Length	Gauge	Wire Config.	(SCCR)	Voltage Protection Rating (VPR) L-N   L-L   L-G   N-G	Prod. Warr. (yrs)	Connected Equipment Coverage
<b>Type 2</b>										
IG1300-2T-1C	IG1300-2T-1C3	120/240	2	4/24	14	L1, L2, N, GND	20 kA	700 1200 1200 700	5	\$ 10,000 for 5 yrs
IG1300-4T-2C	IG1300-4T-2C3	120/240	2	4/24	14	L1, L2, N, GND	20 kA	700 1200 1200 700	5	\$ 10,000 for 5 yrs
<b>Type 1 or 2</b>										
IG1240RC	IG1240RC3	120/240	2	4/30	14	L1, L2, N, GND	20 kA	700 1200 1200 700	5	\$ 10,000 for 5 yrs
IG3240RC	IG3240RC3	120/240	2	4/30	14	L1, L2, N, GND	60 kA	700 1200 1200 700	10	\$ 25,000 for 5 yrs

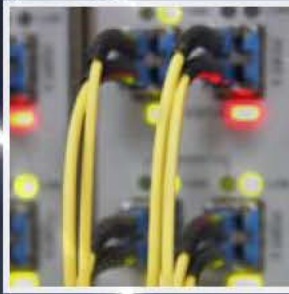
Surge Protection Devices-Arrester Guard®						
Old Model #	New Model #	Service Voltage	Poles	Wire Configuration	Voltage Protection Ratings (VPR)	
					L-N/G	L-L
<b>Type 1 US Type 2 Canada</b>						
AG2401C	AG2401C3	120/240V	1 or 2	L1, L2, GND/N	700	1200
AG2083C	AG2083C3	208V	3	L1, L2, L3, GND/N	700	1200
AG4801	AG48013	277V or 480V	1 or 2	L1, L2, GND	1200	2000
AG4803C	AG4803C3	480V	3	L1, L2, L3, GND/N	1200	2000
AG6503C	AG6503C3	Up to 600V	3	L1, L2, L3, GND/N	1500	2500
AG6503L	AG6503L3	Up to 600V	3	L1, L2, L3, GND/N	1500	2500

Old Model #	New Model #	Service Voltage	Poles	Wire Configuration	Voltage Protection Ratings (VRP)			
					L1 or L14 to N/G	L2 to N/G	L1 to L3	L1/L3 to L2
AG2403C	AG2403C3	240V	3	L1, L2, L3, GND/N	700	1000	1200	1500

Type 3 Surge Protection Devices									
Old Model #	New Model #	Number of Outlets	Cord Length	Electrical Rating	Max Joule. Rating	Max. Surge Amperage	VPR L-N/L-G/N-G	Prod. Warr. (yrs)	Connected Equipment \$ Coverage
IG11246	IG112463	4	6	120 V/15 A	480	24kA	400/400/400	5	\$10,000
IG11266	IG112663	6	6	120 V/15 A	480	24kA	400/400/400	5	\$10,000
IG11266BLK10	IG112663BLK10	6	10	120 V/15 A	480	24kA	400/400/400	5	\$10,000
IG2066	IG20663	6	6	120 V/15 A	960	24kA	330/330/330	5	\$25,000
IG20615	IG206153	6	15	120 V/15 A	960	24kA	330/330/330	5	\$25,000
IG20B12	IG20B123	6	6	120 V/15 A	480	24kA	400/400/400	5	\$5,000
IG2012B15	IG2012B153	6	15	120 V/15 A	480	24kA	400/400/400	5	\$5,000
IG2086	IG20863	8	6	120 V/15 A	960	24kA	330/330/330	5	\$25,000

NOTE: Cord Lengths can be modified up to 25 feet. Consult Sales Representatives for pricing and availability.

Surge Protection Devices					
Phone / Modem /DSL					
Model #	Lines	Gauge	Wire	DC Breakdown Voltage	Location
IG2TM	up to 2	#24 – #16 AWG	4 wire	350 VDC	Indoor
IG4TM	up to 4	#24 – #16 AWG	8 wire	350 VDC	Indoor
IG2T3R	2 standard up to 12	#24 – #16 AWG	4 wire (up to 24 wire)	350 VDC	Indoor / Outdoor



**INTERMATIC®**  
 Providing a brighter solution.™

©2010 Intermatic  
 7777 Winn Road Spring Grove, IL 60081  
 www.intermatic.com  
 (P) 815.675.2321 (F) 815.675.7105  
 300AG10031



To find a distributor near you visit  
[www.intermatic.com](http://www.intermatic.com)