

# ProLED® ECO 4" Downlight Installation Instructions



## IMPORTANT

READ INSTRUCTIONS CAREFULLY BEFORE INSTALLING. KEEP THESE INSTRUCTIONS FOR FUTURE REFERENCE.

ProLED luminaires must be wired in accordance with the National Electrical Code and all applicable local codes. Proper grounding is required for safety. THIS PRODUCT MUST BE INSTALLED IN ACCORDANCE WITH THE APPLICABLE INSTALLATION CODE BY A QUALIFIED ELECTRICIAN WHO IS FAMILIAR WITH THE CONSTRUCTION AND OPERATION OF THE PRODUCT AND THE HAZARDS INVOLVED.

**WARNING** - Risk of fire or electric shock. ProLED Downlight Series installation requires knowledge of the luminaires' electrical systems. If not qualified, DO NOT attempt installation. Contact a qualified electrician.

**WARNING** - Risk of fire or electric shock. Install this kit only in the luminaires that have the construction features and dimensions shown in the photographs and/or drawings. DO NOT make or alter any open holes in an enclosure of wiring or electrical components during kit installation.

**WARNING** - To prevent wiring damage or abrasion, DO NOT expose wiring to edges of sheet metal or other sharp objects.

**WARNING** - Risk of fire or electric shock. DO NOT alter, relocate, or remove wiring, lampholders, power supply, or any other electrical component.

**WARNING** - This device is not intended for use with emergency exits.

**DANGER** - RISK OF SHOCK-DISCONNECT POWER BEFORE INSTALLATION

**CAUTION:** To avoid possible electrical shock, be sure that power supply is turned off at fuse box or circuit breaker before installing or servicing luminaire. For your safety, read and understand instructions completely before beginning installation.

## WARRANTY INFORMATION:

This product is warranted for 5 years from the date of purchase. If this product does not perform to the specifications supplied on this package, send an email or write to the address below for product return and replacement. This replacement is the sole remedy available. Liability for incidental or consequential damage is expressly excluded. Visit [www.halcolighting.com](http://www.halcolighting.com) for full warranty details and dimmer compatibility information.

## INSTALLATION INSTRUCTIONS:

1. TURN OFF THE POWER AT CIRCUIT BREAKER PRIOR TO INSTALLATION. Remove the diffuser and existing bulb if necessary. Remove the existing trim.

2. As shown in Fig 1, twist the lamp base into the lamp holder.

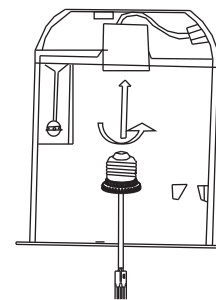


Fig 1

3. As shown in Fig 2, connect the quick disconnect between the retrofit kit and the medium base umbilical socket.

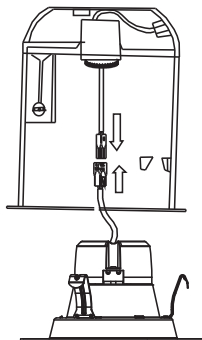


Fig 2

4. Push the LED retrofit with the spring clips into the recessed housing until the edge is flushed with the ceiling surface.

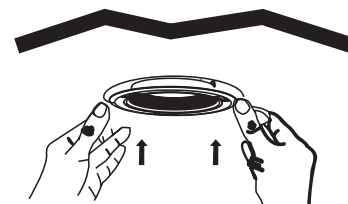


Fig 3