

# TECHNICAL SPECIFICATION SHEET

100 WATT, HPS S54, HX-HPF  
BALLAST E-SZAXXX100, 60Hz

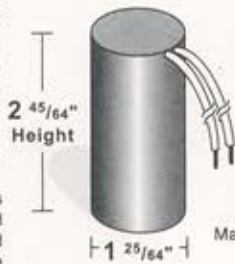
## CAPACITOR

RATING 10 MFD±3%  
280 VAC, MIN

Dry Film Capacitors  
Thermal Plastic Case

Dry film capacitor contains  
no oil; are furnished  
with 12" leads and  
includes discharge  
resistor.

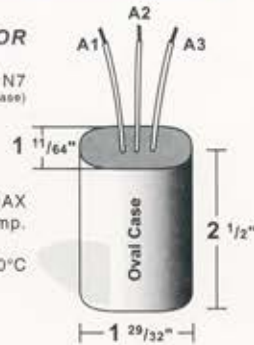
Max. case temp. 110°C



## IGNITOR

37-63-AS-9.1 N7  
(Thermal Plastic Case)

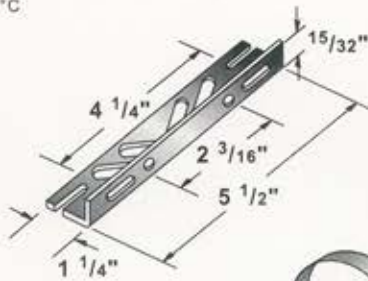
2 F.T. MAX  
Distance to lamp.  
Max. case temp. 110°C



## BRACKET

CORE & COIL  
MOUNTING BRACKET

KB39  
Mounting bracket for  
Core & Coil Ballasts  
(1 bracket with thru bolts)



C-01

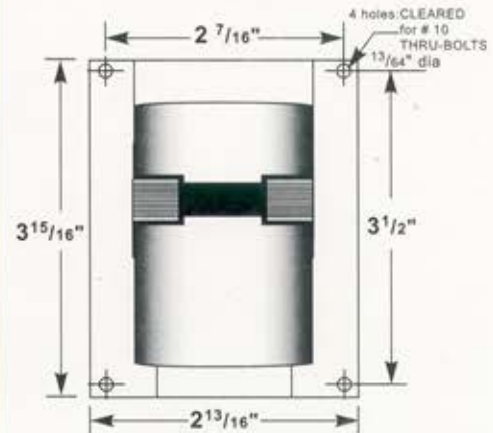
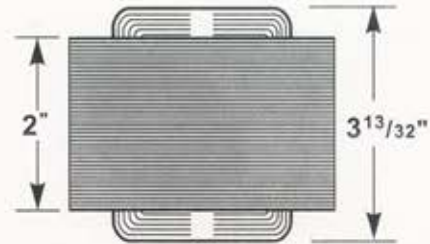
I-01

MOUNTING CLIP for round  
case (Furnished as standard  
with B suffix ballasts)

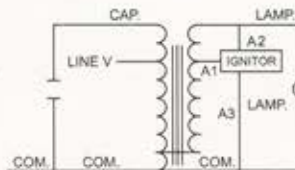
MOUNTING CLIP for oval case  
(Furnished as standard with B  
suffix ballasts)

## CORE AND COIL

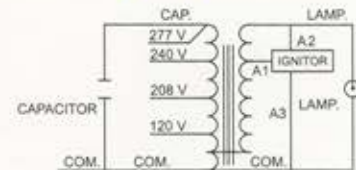
(3" x 4" CORE)



SOLA ballast leads wires are properly identified indicating  
on their surfaces the input voltages. ALL LEAD LENGTHS:  
12 INCHES



SINGLE VOLTAGE



MULTI VOLTAGE  
120/208/240/277  
VOLT CONNECTION

## ELECTRICAL CHARACTERISTICS

INPUT VOLTAGE RANGE ±5%  
POWER FACTOR HIGH  
LAMP POWER REG. WITHIN TRAPEZOID  
MIN. STARTING TEMP. -40°C



| Line Voltage | Catalog Number | Circuit Type | Input Watts | Line Current (AMPS) |              |           | Open Circuit Voltage | Drop Out Voltage | Fuse | Ballast Net Weight (lbs) | UL Bench Top Rise Code 1029 |
|--------------|----------------|--------------|-------------|---------------------|--------------|-----------|----------------------|------------------|------|--------------------------|-----------------------------|
|              |                |              |             | Operating           | Open Circuit | Starting  |                      |                  |      |                          |                             |
| 120/277      | E-SZA0FT100    | HX-HPF       | 128         | 1.14/0.49           | 2.0/0.87     | 1.09/0.46 | 120                  | 96/222           | 8/3  | 6.5                      | A                           |
| 208          | E-SZA00R100    | HX-HPF       | 128         | 0.66                | 1.16         | 0.62      | 120                  | 166              | 5    | 6.5                      | A                           |
| 240          | E-SZA00M100    | HX-HPF       | 128         | 0.57                | 1.0          | 0.55      | 120                  | 192              | 5    | 6.5                      | A                           |
| 277          | E-SZA00T100    | HX-HPF       | 128         | 0.49                | 0.87         | 0.46      | 120                  | 222              | 3    | 6.5                      | A                           |
| 120 or       | E-SZA00W100    | HX-HPF       | 128         | 1.14                | 2.0          | 1.09      | 120                  | 96               | 8    | 6.5                      | A                           |
| 208 or       |                | HX-HPF       | 128         | 0.66                | 1.16         | 0.62      | 120                  | 166              | 5    | 6.5                      |                             |
| 240 or       |                | HX-HPF       | 128         | 0.57                | 1.0          | 0.55      | 120                  | 192              | 3    | 6.5                      |                             |
| 277          |                | HX-HPF       | 128         | 0.49                | 0.87         | 0.46      | 120                  | 222              | 3    | 6.5                      |                             |

## ORDERING INFORMATION

\*\*\*Add proper suffix to catalog number when  
ordering as indicated below:

No suffix= Core and Coil and Ignitor Only

B= Core and Coil, Ignitor and Bracket

C= Core and Coil, Ignitor and Capacitor

BC= Core and Coil, Ignitor, Capacitor and Bracket

Lighting & Power Source  
2707 Realty Road, Suite 110  
Carrollton, TX 75006  
(888) 385-4448 Fax: (972) 418-5858  
www.ballastsource.com  
ISB@solaballast.com

**ISB SOLA BASIC**  
BALLASTS