

24C Troffer Retrofit Kit

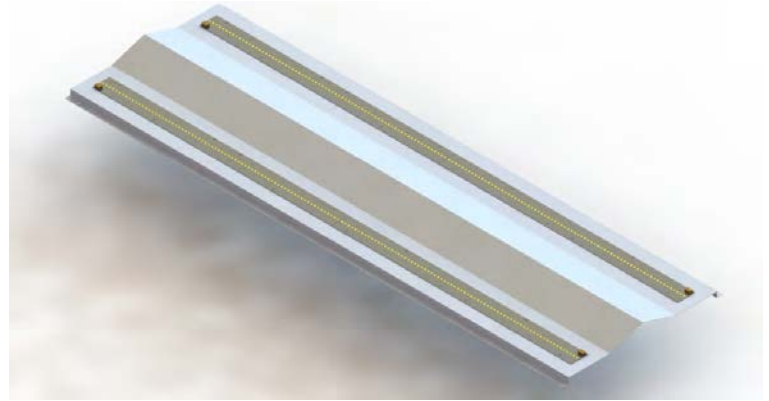
LED Reflector Kit for Troffer Body

FEATURES & SPECIFICATIONS

- Maximum Efficiency
- Fast, simple installation
- Remove reflectors without tools

MATERIALS

Reflectors are a premium and standard full specular enhanced white. Code gage steel.



Side View



ORDERING INFORMATION

Example: 24CF35W3650LW10DMV40K

24C - STANDARD

24C	F35W3650L	W10	DMV	40K
Series	Wattage and Lumen	Reflector	Driver	Kelvin Temperature
24C - 2x4	F35W3650L 35 System Watts, 3650 Delivered Lumens F48W5650L 48 System Watts, 5650 Delivered Lumens F56W6050L 56 System Watts, 6050 Delivered Lumens	W10 Precoated Steel - White	DMV 0-10V MV Multi - Volt 120V-277V	30K 3000K 35K 3500K 40K 4000K 50K 5000K

* Consult Factory for more options