

## FEATURES & SPECIFICATIONS

**INTENDED USE** — The OLWCM provides years of maintenance-free general illumination for indoor and covered outdoor applications. Ideal for outdoor applications such as parking areas, garages, carports, loading areas and covered walkways. Ideal for indoor applications such as factories and warehouses.

**CONSTRUCTION** — Rugged cast-aluminum, corrosion-resistant bronze housing.

MVOLT driver operates on any line voltage from 120-277V.

Rated for -40°C to 40°C ambient.

**OPTICS** — High-performance LEDs maintain 70% of light output at 50,000 hours of service.

Lenses are engineered for superior lighting distribution, uniformity and fixture spacing.

OLWCM 36 provides a **tight, round distribution** for maximum lighting of smaller area.

OLWCM 46 and 57 provide **wider distribution** to illuminate larger areas.

See Lighting Facts Labels for specific fixture performance.

**INSTALLATION** — Designed for ceiling mounting between 8 and 15 feet or pendant mounting to enable custom mounting heights. Downlight only.

Mounting hardware for surface mount is included. Pendant mounting requires 3/4" NPT pendant stem, by others.

**LISTINGS** — UL Listed to U.S. and Canadian safety standards for wet locations.

Tested in accordance with IESNA LM-79 and LM-80 standards.

**WARRANTY** — 5-year limited warranty. Complete warranty terms located at [www.acuitybrands.com/CustomerResources/Terms\\_and\\_conditions.aspx](http://www.acuitybrands.com/CustomerResources/Terms_and_conditions.aspx)

Actual performance may differ as a result of end-user environment and application.

Note: Specifications subject to change without notice.

Outdoor General Purpose

# OLWCM

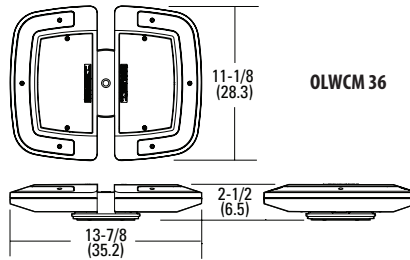
LED CEILING MOUNT



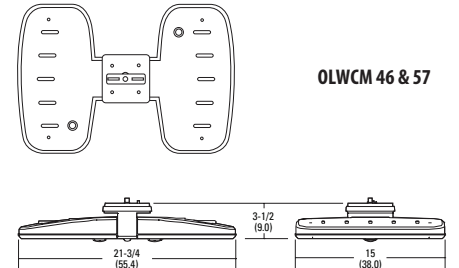
OLWCM 36



OLWCM 46 & 57



OLWCM 36



OLWCM 46 & 57

All dimensions are in inches (centimeters) unless otherwise indicated.

### ORDERING INFORMATION

Lead times will vary depending on options selected. Consult with your sales representative.

Example: OLWCM 36

OLWCM Series	Lumens / Color temperature (CCT)	Voltage	Finish
OLWCM LED ceiling / pendant	<b>960 mA options:</b> 36 3600 lumens / 5700K <sup>1</sup> 46 4600 lumens / 5000K <sup>1</sup> 57 5700 lumens / 5000K <sup>1</sup>	(blank) MVOLT (120V-277V)	(blank) DDB dark bronze

<b>Accessories:</b> Order as separate catalog number.
FCOS M24 Full cutoff shield, OLWCM 36 only

**Notes**

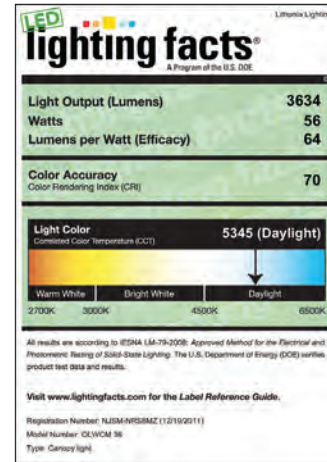
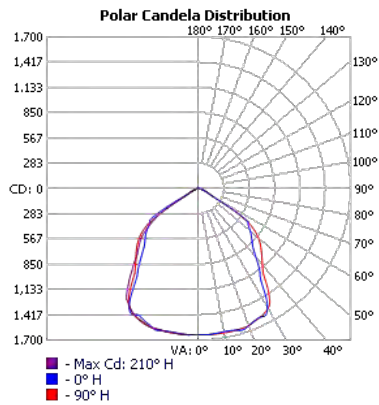
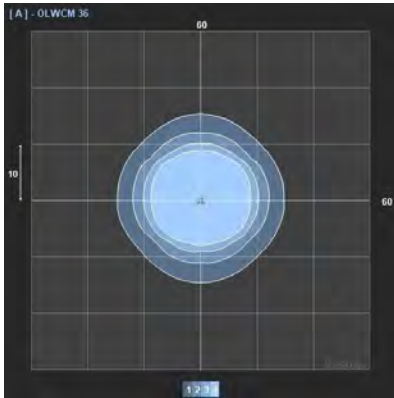
1 Correlated Color Temperature (CCT) shown is nominal per ANSI C78,377-2008.

# OLWCM LED Ceiling Light

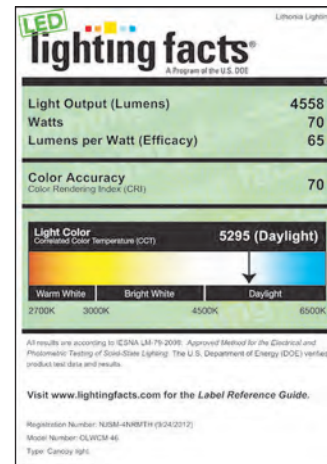
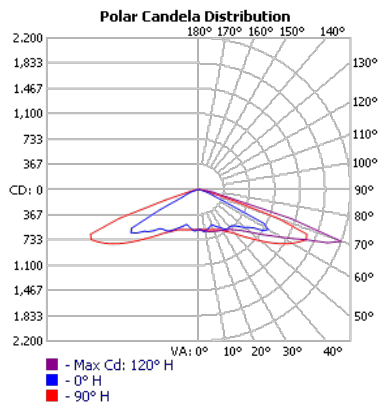
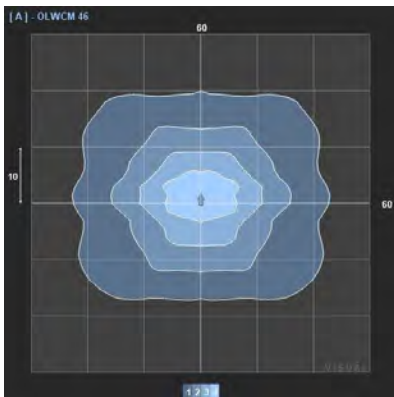
## PHOTOMETRIC DIAGRAMS

To see complete photometric reports or download .ies files for this product, visit the [OLWCM page](#) on Lithonia.com. Tested in accordance with IESNA LM-79 and LM-80 standards.

**OLWCM 36** 10' mounting height, .90 LLF



**OLWCM 46** 10' mounting height, .90 LLF



**OLWCM 57** 10' mounting height, .90 LLF

