



General Specification

Residential/Commercial Occupancy/Vacancy Sensor



Model #: HMOS

Description: The passive infrared sensors work by detecting the difference between heat emitted from the human body in motion and the background space. The sensor switch can turn a load on and hold it as long as the sensor detects occupancy. After no motion is detected for the set time delay, the load turned off automatically. This product has one relay (equal to Single Pole Switch), also includes adjustable Ambient Light Level.

Features:

- Turn lights ON/OFF automatically (Occupancy Mode)
- Manual ON / automatically OFF (Vacancy Mode)
- Time delay is adjustable from 15 seconds (test mode) to 30 minutes
- Neutral wire required
- Zero Crossing for long relay life
- Adjustable sensitivity settings

Specifications:

Voltage	120 Vac, 60 Hz
Incandescent	500W
Fluorescent	500 VA
LED Fixture.....	150W
Motor	1/8 HP
Time delay	15 Sec to 30 Mins
Operation temperating	32 F to 131 F

*Coverage Area

- Best: 180 sq.ft.
- Regular: 450 sq.ft.
- Maximum: 700 sq.ft.

As illustrated in Figure 1, The HMOS has a 180° detection range with a maximum distance of 30' detection in front of the sensor and 12' on the sides providing 700 sq. ft. of coverage. For maximum results, the sensor must be properly installed between the height of 4' to 5' and away from obstructions such as walls, furniture and transparent barriers like Low-E glass.

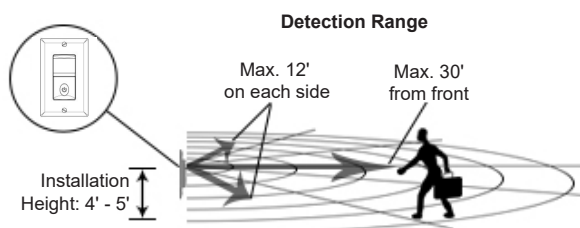


Figure 1

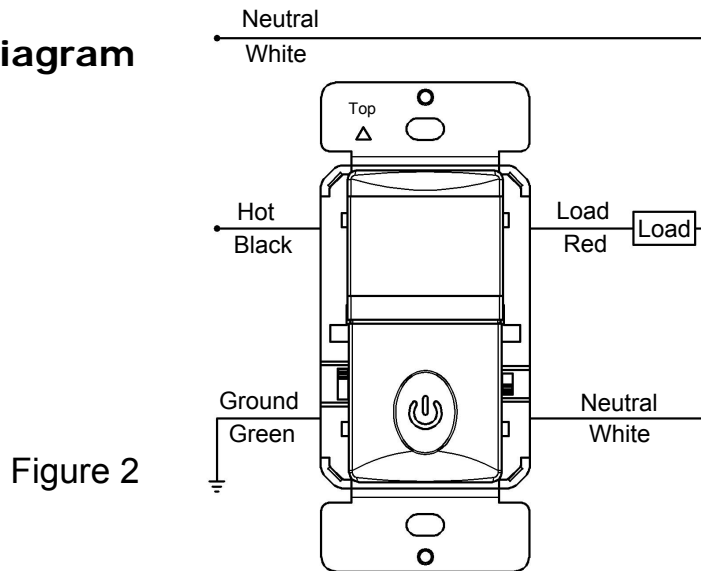
Testing & Code Compliance



Installation & wiring

1. Connect lead wires as wiring diagram (see Figure 2): Black lead to hot wire, red lead to load wire, white lead to neutral wire, green lead to ground wire.

Wiring diagram



2. Device "TOP" upward.
3. Gently position wires in wall box, attach sensor switch to the box.
4. Restore power at circuit breaker or fuse, wait one minute.
5. Locate the toggle switch on both sides of the top cover to perform test and adjustment.

Changing the color of your switch

Your switch ships with top cover attached. It is convenient for users to change the top cover. Please proceed as follows:

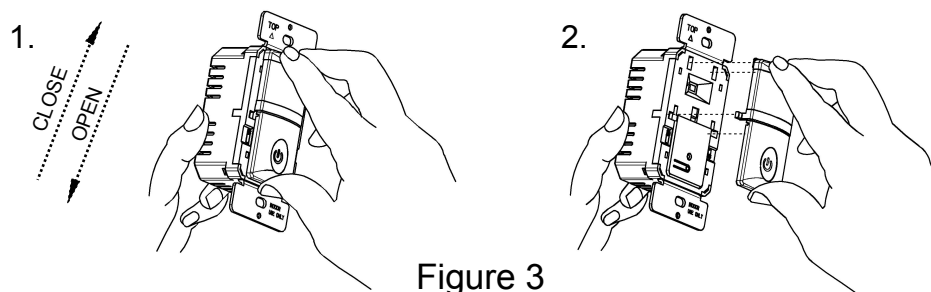


Figure 3

Push down top cover to release

Line up tabs and push up to attach

Adjustment

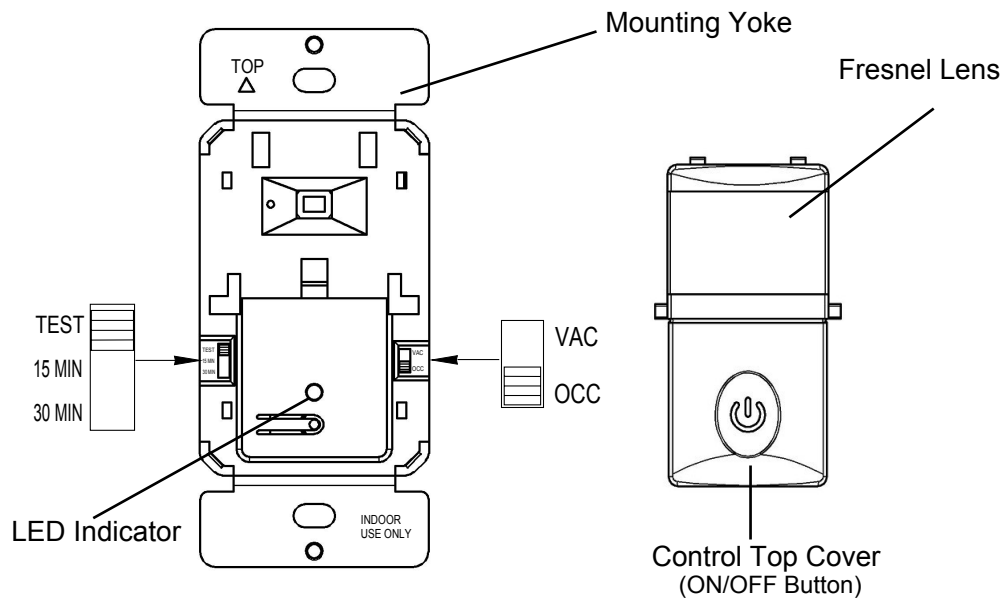


Figure 4

Band switch prescription

Mode	Position	Description	Function of ON/OFF button
VAC	Upper side	Vacancy Mode: Manual On only, Automatic Off after set time delay.	Manually push On/Off the load.
OCC	Lower side	Occupancy Mode: Automatic On, Automatic Off after set time delay.	Manually push On/Off the load.

Time delay setting

Default position	15 Seconds (Test mode)		
Adjustable	15 Seconds	15 Minutes	30 Minutes

Ambient light(Default setting)

Notice: If the ambient light level is too high, more than the default setting the load may not automatic turned ON. If turning ON is desired, cover the sensor lens with one hand for 2 seconds, the light is going to turn ON.