

3-Way Preset Dimmer

Incandescent
 Three-Way: AY-603P, AY-603PG, AY-603PNL
 TG-603P, TG-603PG, TG-603PNL
 Rated at: 120 V~ 60 Hz 600 W

Magnetic Low-Voltage
 Three-Way: AYLV-603P
 Rated at: 120 V~ 60 Hz 600 VA / 450 W

Important Notes

Please read before installing.

- Use "AY-" or "TG-" models only with permanently-installed 120 V~ incandescent or halogen fixtures. To avoid overheating and possible damage to other equipment, do not use to control receptacles, fluorescent lighting fixtures, motor-driven appliances, or transformer-supplied appliances. Use "AYLV-" models only with core and coil (magnetic) low-voltage transformers. To control solid state (electronic) low-voltage transformers, use Lutron® electronic low-voltage dimmers.
- Operating magnetic low-voltage fixtures with all lamps inoperative or removed may result in current flow in excess of normal levels. To avoid possible transformer overheating and premature failure, Lutron strongly recommends the following:
 - Do not operate magnetic low-voltage fixtures without operative lamps in place.
 - Replace burned-out lamps immediately.
 - Use magnetic low-voltage fixtures with thermal protection or fused primary windings to prevent transformer failure due to excess current.
- When no "grounding means" exist within the wallbox then the NEC® 2008, Article 404.9 allows a dimmer without a grounding connection to be installed as a replacement, as long as a plastic, noncombustible wallplate is used. For this type of installation, cap or remove the green ground wire on the dimmer and use an appropriate wallplate such as Fassada® series wallplates by Lutron.
- Recommended minimum load is 40 W.
- Protect dimmer from dust and dirt when painting or spackling.
- Dimmer may feel warm to the touch during normal operation.
- Only one dimmer can be used in a 3-way circuit.
- For new installations, install a test switch before installing the dimmer.
- Install in accordance with all national and local electrical codes.
- Clean dimmer with a *soft damp cloth only*. Do not use any chemical cleaners.
- Do not use with compact fluorescent lamps.

- Easy-to-follow Instructions.
- Instrucciones Fáciles de Seguir.



030-521

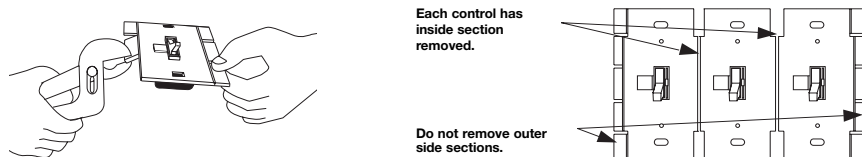
- Easy-to-follow Instructions.
- Instrucciones Fáciles de Seguir.



030-521

Multigang Installations

When installing more than one control in the same wallbox, it may be necessary to remove all inner side sections prior to wiring (see below). Using pliers, bend side sections up and down until they break off. Repeat for each side section to be removed. Removal of dimmer side sections reduces maximum load capacity. Refer to chart below for maximum dimmer capacity.



Model Number Rating	No Sides Removed	One Side Removed	Two Sides Removed
600 W	600 W	500 W	400 W
600 VA / 450 W	600 VA / 450 W	500 VA / 400 W	400 VA / 300 W

Technical Assistance

If you have questions concerning the installation or operation of this product, call the **Lutron Technical Support Center**. Please provide exact model number when calling.



U.S.A., Canada, and the Caribbean (24 hrs/7days)
 1.800.523.9466



Fax +1.610.282.3090



<http://www.lutron.com>

Limited Warranty (Valid only in U.S.A., Canada, Puerto Rico, and the Caribbean.)

Lutron will, at its option, repair or replace any unit that is defective in materials or manufacture within one year after purchase. For warranty service, return unit to place of purchase or mail to Lutron at 7200 Suter Rd., Coopersburg, PA 18036-1299, postage pre-paid.

THIS WARRANTY IS IN LIEU OF ALL OTHER EXPRESS WARRANTIES, AND THE IMPLIED WARRANTY OF MERCHANTABILITY IS LIMITED TO ONE YEAR FROM PURCHASE. THIS WARRANTY DOES NOT COVER THE COST OF INSTALLATION, REMOVAL OR REINSTALLATION, OR DAMAGE RESULTING FROM MISUSE, ABUSE, OR DAMAGE FROM IMPROPER WIRING OR INSTALLATION. THIS WARRANTY DOES NOT COVER INCIDENTAL OR CONSEQUENTIAL DAMAGES. LUTRON'S LIABILITY ON ANY CLAIM FOR DAMAGES ARISING OUT OF OR IN CONNECTION WITH THE MANUFACTURE, SALE, INSTALLATION, DELIVERY, OR USE OF THE UNIT SHALL NEVER EXCEED THE PURCHASE PRICE OF THE UNIT.

This warranty gives you specific legal rights, and you may have other rights which vary from state to state. Some states do not allow the exclusion or limitation of incidental or consequential damages, or limitation on how long an implied warranty may last, so the above limitations may not apply to you.

This product may be covered by one or more of the following U.S. patents: 4,954,768; 5,262,678; 5,359,231; 5,637,930; DES 342,234; and corresponding foreign patents. Lutron and Fassada are registered trademarks of Lutron Electronics Co., Inc. NEC is a registered trademark of National Fire Protection Association, Quincy, Massachusetts.

© 2008 Lutron Electronics Co., Inc.

LUTRON®

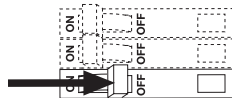
Lutron Electronics Co., Inc.
 7200 Suter Road
 Coopersburg, PA 18036-1299, U.S.A.
 Made and printed in U.S.A. 6/08 P/N 030-521 Rev. H

Installation

For installations involving more than one control in a wallbox, refer to Multigang Installations before beginning.

1 Turning Power OFF

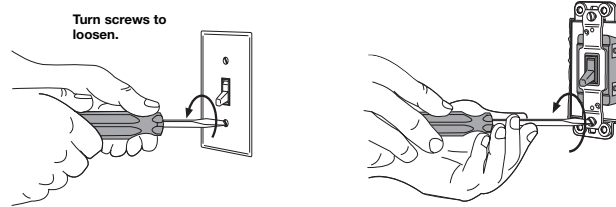
Turn power OFF at circuit breaker (or remove fuse).



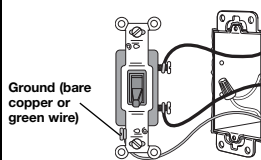
WARNING: Before proceeding, verify that power to the switch is OFF. Otherwise, death or serious injury could result.

2 Removing Wallplate and Switch

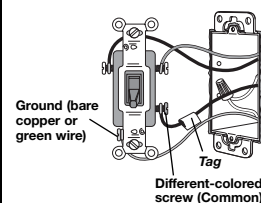
Remove the wallplate and switch mounting screws. Carefully remove switch from wall (do not remove screws).



3 Identifying Type of Circuit

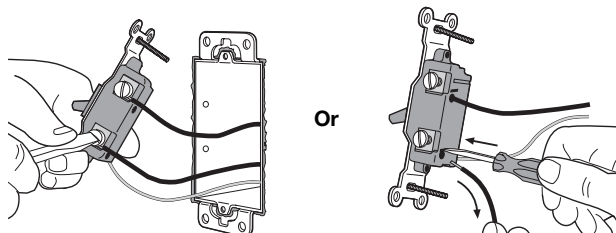


Single-Pole Circuit: Insulated wires connected to two screws of the same color: Replace with a single-pole or 3-way dimmer. Follow: **Single-Pole Wiring** when completing step 6.



3-Way Circuit: Insulated wires connected to three screws: One of these wires is connected to a screw of a different-color. **TAG** this wire to identify it when wiring. Follow: **3-Way Wiring** when completing step 6.

4 Disconnecting Switch Wires



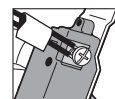
Screw Terminals: Turn screws counterclockwise to loosen.

Push-In Terminal: Insert screwdriver and pull wire out.

Important Note: Your wall switch may have two wires attached to the same screw (see illustrations below for examples). Tape these two wires together before disconnecting. When wiring, connect wires to dimmer the same way they were connected to the switch.



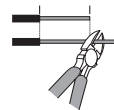
One wire in the back-wired hole and one to the screw.



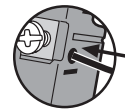
One continuous wire to the screw.

5 Prepare Wires

Trim or strip wallbox wires to the length indicated by the strip gauge on the back of the dimmer. Use the same procedure to wire your new dimmer as was used with the old switch.



Push-In Terminals: Insert wires fully. **Note:** Backwire holes are for use with 14 AWG (1.5 mm²) solid copper wire only. For aluminum wire, consult an electrician. DO NOT use stranded or twisted wire.

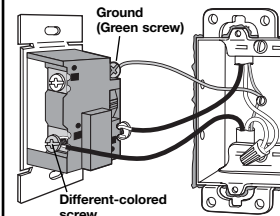


Or

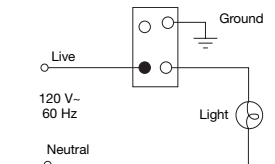
Screw Terminals: Tighten securely. Screw terminals are for use with solid copper wire only. For aluminum wire, consult an electrician. DO NOT use stranded or twisted wire.



6 Wiring the Dimmer



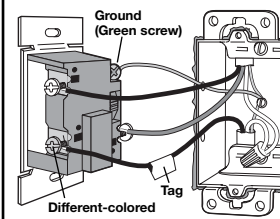
Helpful Hint: If you are replacing a single-pole switch with a 3-way or single-pole/3-way dimmer, the screw on the same side as the different-colored screw is not used. Tighten the screw securely.



Single-Pole Wiring

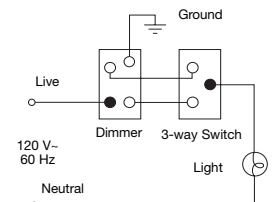
- Connect the bare copper or green ground wire to the green ground screw on the dimmer (see Important Note 3).
- Connect one of the remaining wires removed from the switch to the different-colored screw (or backwire hole) on the dimmer.
- Connect the remaining wire removed from the switch to the screw (or backwire hole) opposite the different-colored screw on the dimmer.

Or



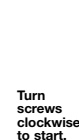
3-Way Wiring

- Connect the bare copper or green ground wire to the green ground screw on the dimmer (see Important Note 3).
- Connect the tagged wire removed from the switch to the different-colored (COMMON) screw (or backwire hole) on the dimmer. If two wires were taped together, connect one wire to the screw and insert the other wire into the backwire hole near the screw.
- Connect one of the remaining wires removed from the switch to either of the remaining screws (or backwire holes) on the dimmer.
- Connect the last wire removed from the switch to the remaining screw (or backwire hole) on the dimmer.

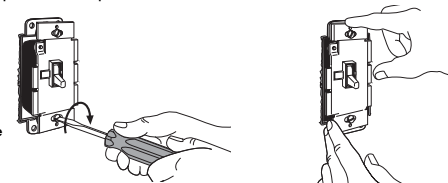


7 Mounting Dimmer to Wallbox

Form wires carefully into the wallbox, mount and align dimmer. Replace the wallplate.



Turn screws clockwise to start.



Align dimmer and tighten screws clockwise.

8 Turning Power ON

Turn power ON at circuit breaker (or replace fuse).

