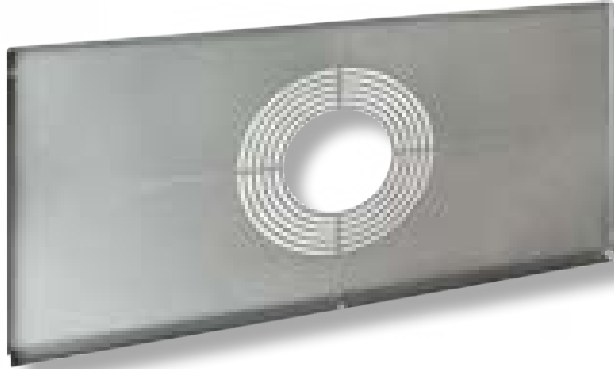
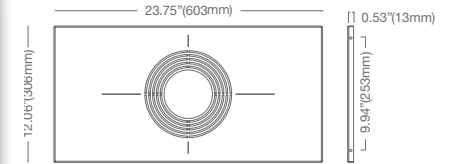


T-GRID NEW CONSTRUCTION PLATE

PRO



DIMENSIONS

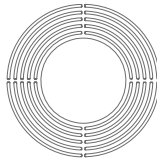
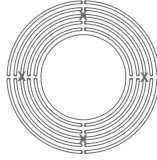
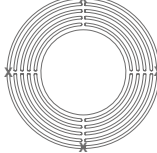


Ref.:#DS236-NOPLATE/T

- 🕒 **New construction or remodel plate for T-Grid ceilings**
- 🕒 **Removable circular knockouts**
- 🕒 **Fits standard 2x2' & 2x4' T-Grids**
- 🕒 **Flanges feature pre-drilled holes for easy T-Grid installation**

RECOMMENDED USE

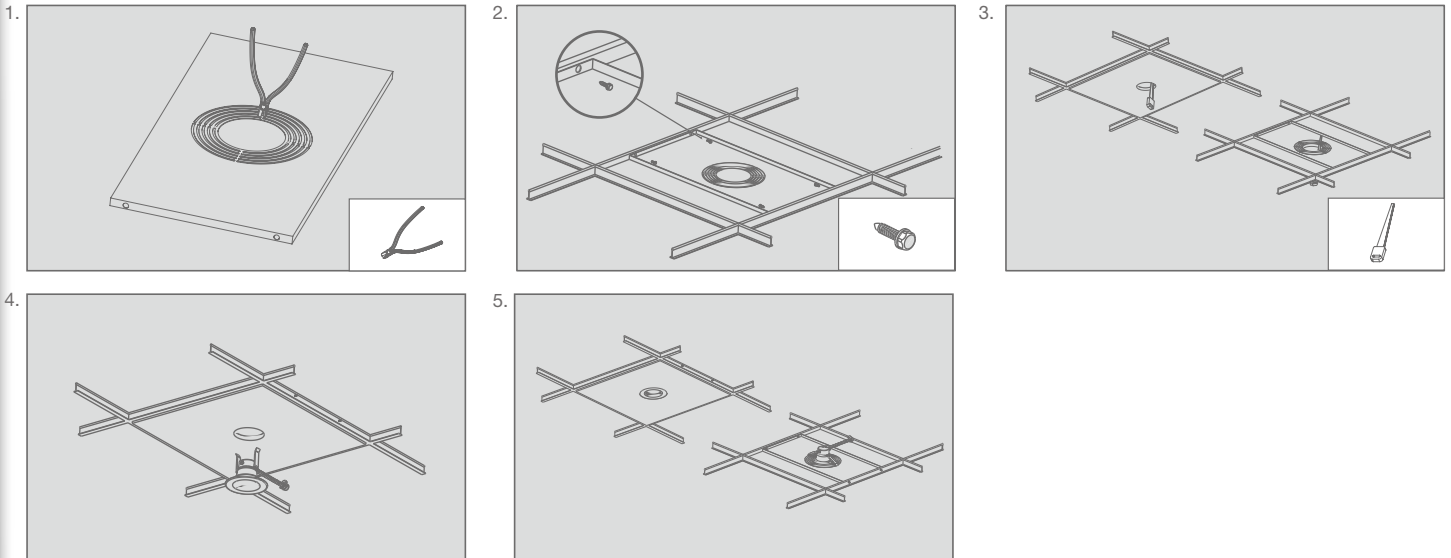
THINFIT & INNOFIT series

Compatible Products	Circular Knockout (CKO) Instructions
THINFIT 4" 8.5DLNC4DIM/xxx INNOFIT 4" 14CDLA4/xxx/277V	 <p>Keep all CKOs</p>
THINFIT 6" 11.6DLNC6DIM/xxx INNOFIT 6" 21CDLA6/xxx/277V	 <p>Remove CKOs #1, #2 & #3</p>
INNOFIT 8" 27CDLA8/xxx/277V	 <p>Remove all CKOs</p>

Where xxx means 818-965 which indicates CRI and color Temperature

T-GRID NEW CONSTRUCTION PLATE

INSTALLATION GUIDE



Step 1. Using cutting pliers, remove any CKO sections necessary to install the downlight. (fig. 1)

Step 2. Place the NCPLATE/T on top of the T-Grid tile where the downlight will be installed. Screw the NCPLATE/T to the sides of the T-Grid through the plate's flange holes. (fig. 2)

Step 3. Once the plate is attached to the T-Grid, cut a hole in the tile following the inside of the selected CKO. (fig. 3)

Step 4. Follow appropriate downlight installation instruction to complete the installation. (fig. 4 & 5)

SPECIFICATIONS

Product
Model

97983
NCPLATE/T

Type

New Construction Plate for T-Grid ceilings