

## CLICK DOWNLIGHT INSTALLATION GUIDE – WARNING

**WARNING** – Read all product labels and instructions before installing fixture.

**WARNING** – Turn off power before installation or servicing.

**WARNING** – Selected fixture voltage must match supply line voltage. Fixture must be grounded.

**WARNING** – Risk of fire or electric shock. LED Retrofit Kit installation requires knowledge of luminaires electrical systems. Installation should be performed only by a qualified electrician in accordance with the National Electrical Code and relevant local code.

**WARNING** – Risk of fire or electric shock. Install this kit only in the luminaires that have the construction features and dimensions shown in the photographs and/or drawings.

**WARNING** – To prevent wiring damage or abrasion, do not expose wiring to edges of sheet metal or other sharp objects.

**WARNING** – Protect all wiring connections with approved insulators (not supplied).

**WARNING** – Do not make or alter any open holes in an enclosure of wiring or electrical components during kit installation.

**WARNING** – INSTALLATION SHOULD ONLY BE PERFORMED AFTER POWER TO THE FIXTURE HAS BEEN DISCONNECTED.

### 4" J-BOX INSTALLATION

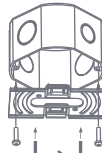
1. Make sure the POWER IS TURNED OFF at the source to the J-box in which you are installing the product.
2. Insert the existing wire ends from the J-box into the LED adapter (fig. 1). Insert the black wire into the side marked (+) and the white wire into the side marked (-). Make sure both wires are tightly secured in the LED adapter.\*
3. Attach the mounting bracket to the J-box using two of the provided screws (fig. 2). Note the flat side of the mounting bracket should be facing down once installed.
4. Attach the safety clip to one of the holes in the mounting bracket (fig. 3).
5. Connect the end of the LED adapter coming out of the J-box to the downlight and wire the grounds together using the provided wire nut (fig. 4).
6. Push downlight up into the mounting bracket until it clicks into place (fig. 5). Make sure all wires are carefully tucked inside the J-box and downlight is flush with ceiling surface.
7. Restore power at the source and installation is complete.

\*If existing J-box wiring does not allow for the use of the LED adapter, remove the adapter from the downlight and wire directly to the J-box using the provided wire nuts.

fig. 1



fig. 2



J-box Screws

fig. 3



fig. 4

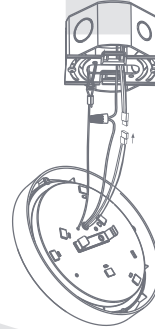
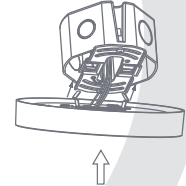


fig. 5



### 4" J-BOX COMPATIBILITY

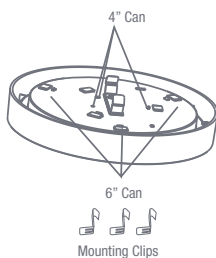
Compatible with most standard 4" J-boxes with minimum height measuring 1.5". Not all existing J-boxes meeting these requirements will be compatible. A test installation should always be performed.

### 4" & 6" RECESSED HOUSING INSTALLATION (ACCESSORIES SOLD SEPARATELY)

Note: Suitable for 4" recessed housing: 15SMPS7DIM/xxx, 15SMPR7DIM/xxx, 10SMPS5.5DIM/xxx, 10SMPR5.5DIM/xxx. Suitable for 6" recessed housing: 15SMPS7DIM/xxx, 15SMPR7DIM/xxx

1. Make sure the POWER IS TURNED OFF at the source to the recessed housing in which you are installing the product.
2. Insert 3 mounting clips according to can size (fig. 1 & fig. 2).
3. Screw the E26 adapter into the recessed can socket. Attached ground wire to recessed housing using attached ground screw or use existing bolt inside housing and provided nut (fig. 3).
4. Carefully tuck all of the wire inside the housing and gently push the downlight up until flush with ceiling surface (fig. 4).
5. Restore power at the source and installation is complete.

fig. 1



Mounting Clips

fig. 2

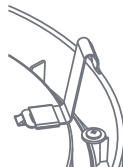


fig. 3

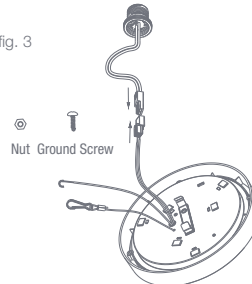
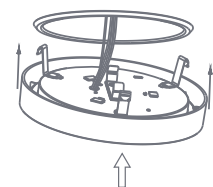


fig. 4



### GU24 INSTALLATION

For installation with a GU24 line-voltage base, use the GU24 adapter (sold separately). Proceed to Step 3 of 4" & 6" RECESSED HOUSING INSTALLATION and substitute the E26 adapter with the GU24 adapter.

### 4" & 6" HOUSING COMPATIBILITY

Compatible with most standard IC and Non-IC housings. 4" housing aperture: 3.82-4.07". 6" housing aperture: 5.91-6.18". Not all existing housing meeting these requirements will be compatible. A test installation should always be performed.