



# GREENCREATIVE

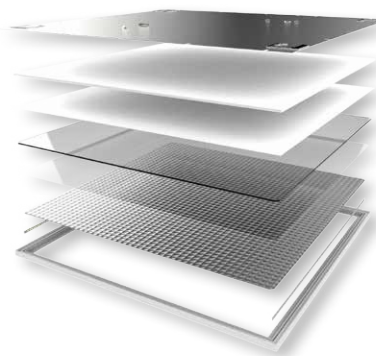
Bringing You the Latest in LED Technology



**PANEL ELEVATE SERIES**

# PANEL PRODUCT FEATURES

## Edge Lighting Technology



- BACK PLATE
- FOAM ALIGNING PLATE
- REFLECTOR
- LIGHT GUIDE PLATE
- DIFFUSER
- SootheOptic LOW GLARE
- EDGE LIGHTING
- TRIM

The PANEL ELEVATE Series uses the latest in edge lighting technology to produce a smooth uniform lighting effect. These sleek, low glare panels create a comfortable environment and install easily in all ceiling applications.

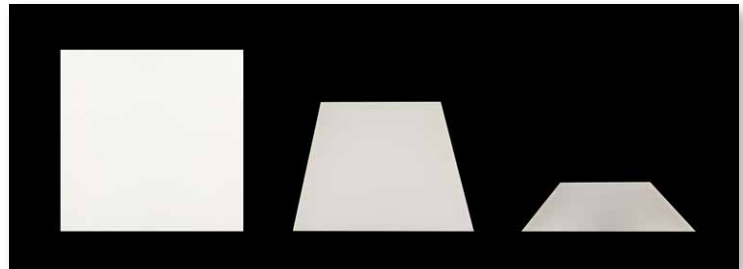
## SootheOptic Low Glare Technology



Glare Control Diffuser



Viewing Angle



0°

45°

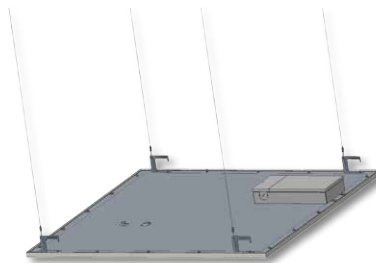
>65°

These PANELS all feature SootheOptic technology that reduces high-angle light and minimizes visual glare. The smooth low glare diffuser gives each luminaire a soft cutoff without visible color separation.

## Versatile Installation



Ceiling T-grid



Suspended Mount

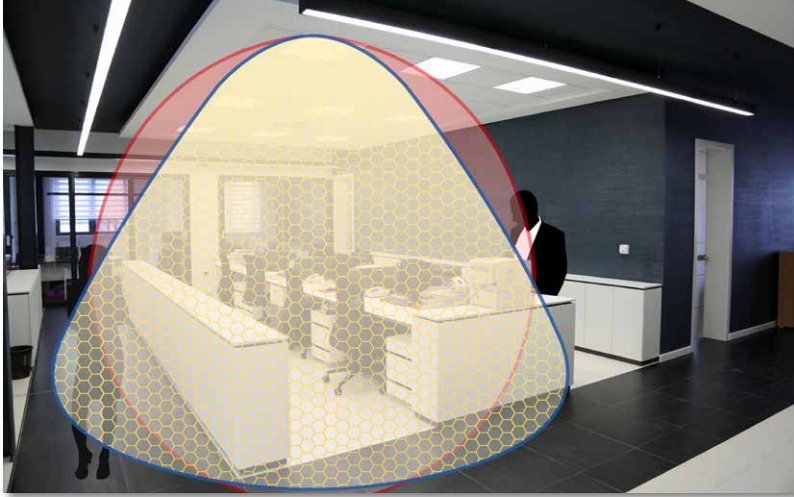


Surface Mount

The PANELS install easily and quickly and come standard for T-grid installation. Accessories are also available for suspended and surface mounting. All wiring takes place inside the integrated driver box.

# PANEL PRODUCT FEATURES

Unified Glare Rating (UGR) <19



**GREEN CREATIVE Panel**  
UGR <19

- Comfortable light at all viewing angles
- More useful light
- No perceptible discomfort

**Standard LED Panel**  
UGR >23

- Harsh glare at viewing angles >65°
- More wasted light
- Perceptible discomfort



Healthcare



Education



Retail

## Options & Accessories

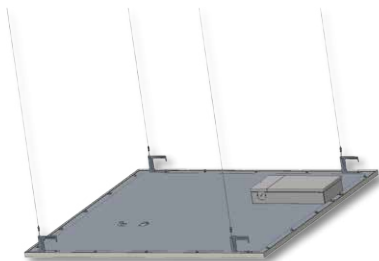
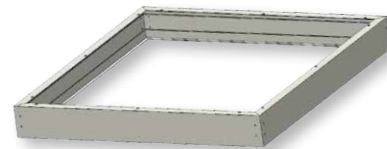
### EMERGENCY BACKUP

- 10W emergency backup for 90 minutes of illumination
- Option available for all PANELS (factory installation)



### SURFACE MOUNT FRAME

- For surface mounting
- Accessory sold separately for all PANELS

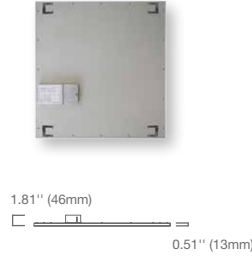
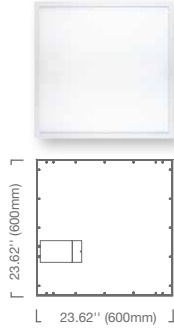


### SUSPENSION CABLES

- For suspended mounting
- Accessory sold separately for all PANELS

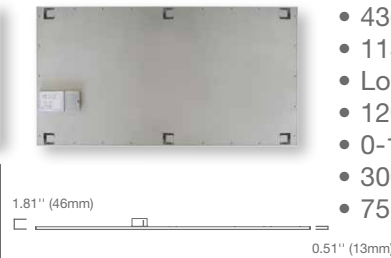
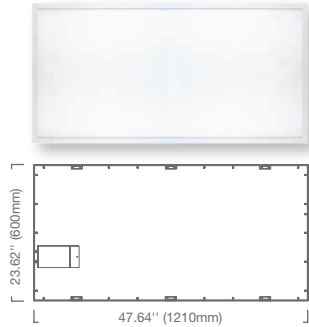
# PANEL SERIES

## PANEL 2X2' 30W



- 3450lm
- 115 LPW
- Low glare UGR <19
- 120-277V universal voltage
- 0-10V dimming
- 3000K, 3500K & 4000K CCT
- 75,000-hr lifetime 10-yr warranty

## PANEL 2X4' 38W



- 4300lm
- 113 LPW
- Low glare UGR <19
- 120-277V universal voltage
- 0-10V dimming
- 3000K, 3500K & 4000K CCT
- 75,000-hr lifetime 10-yr warranty



### Specifications

	Model	Product	CCT	Power (W)	Lumens (lm)	LPW	Beam Angle	CRI (typ.)	Dim	Life (hrs)	Voltage	DLC
<b>PANEL 2X2' 30W</b>	30PAN22DIM/830/277V	28345	3000K	30	3350	112	95°	82	Yes	75,000	120-277V	Standard
	30PAN22DIM/835/277V	28346	3500K	30	3350	112	95°	82	Yes	75,000	120-277V	Standard
	30PAN22DIM/840/277V	28347	4000K	30	3450	115	95°	82	Yes	75,000	120-277V	Standard
<b>PANEL 2X4' 38W</b>	38PAN24DIM/830/277V	28349	3000K	38	4150	109	95°	82	Yes	75,000	120-277V	Standard
	38PAN24DIM/835/277V	28350	3500K	38	4150	109	95°	82	Yes	75,000	120-277V	Standard
	38PAN24DIM/840/277V	28351	4000K	38	4300	113	95°	82	Yes	75,000	120-277V	Standard

Note: To order the EMERGENCY BACKUP add /EM to the model number

Ex. 38PAN24DIM/840/277V/EM

\* Suitable for damp locations only

### Accessory Ordering Information

Model	Product	Description
MOUNTFRAME22	28390	2X2' Surface Mount Frame
MOUNTFRAME24	28391	2X4' Surface Mount Frame
SUSPCABLE22	28392	70.9" (1.8m) Aircraft Suspension Cable (Set of 4 Cables for 1 2X2' Fixture)
SUSPCABLE24	28393	70.9" (1.8m) Aircraft Suspension Cable (Set of 6 Cables for 1 2X4' Fixture)