

DATA SHEET

DES KPL. LED extrusion – article number 18030ANODA

Product characteristics

The extrusion is made of high quality, double anodized aluminum and has 3 chambers for the light source. The lower chamber allows a maximum of 4 rows of LED tape up to 12mm. The upper chambers allow a total of 2 rows of LED tape. The central part of the extrusion is dedicated for electrical devices such as power supplies and controllers. Diodes in the lower chamber are covered with the HSP47 cover (frosted, clear). The LEDs in the upper chamber are covered with any of the following covers: KA-BIS, HS (frosted, clear) or LIGER (frosted matte). All of the covers are made of polycarbonate. HSP47 and HS covers are certified – UV rated and fire rated.

The extrusion consists of 2 elements: ODES (main part dedicated for LED tape and electrical devices) and TEDES (upper part dedicated to be mounted to the surface or used for suspension with the 2 rows of LEDs). The two parts are put combined by snapping them together. Special plastic rods add additional protection (they are included in the extrusion set or can be sold separately).

The fixture can be applied in interior applications with the use of the DESIN MET end caps as well as exterior applications with the use of the DES-KPL end caps. Additional accessories for the extrusion are special elements that enable the fixture's suspension and power.

All the optional accessories are listed on our website, www.KlusDesign.com

Applications

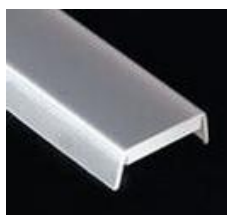
The extrusion is dedicated for production of surface mount and suspended fixtures. The Upper chamber with the mounted LED tape provides the additional effect of illuminating objects or surfaces located above the fixture.

The design of the extrusion allows electrical devices to be concealed inside the extrusion's body. This feature expands application possibilities: illumination of halls in hotels or offices etc. Fixtures assembled with the DES-KPL end caps can be mounted outdoors. The fixture is sealed so that there is no risk of water getting into the area dedicated for electrical devices or the LED tape.

Products related to the Extrusion



cover KA-BIS
frosted (17071)
clear (17072)
cover type LIGER
frosted matte (17031)



cover type HS
frosted (1369)
clear (1370)



cover type S
clear (00220)
satin (17111)



cover type HSP47
frosted (17051)
clear (17062)



end cap
DESIN MET (24151)



DATA SHEET

DES KPL. LED extrusion – article number 18030ANODA

Technical specification

Ingress Protection Rating	IP 20 (standard), IP67 (optional)
Product Number	18030ANODA_1 (39.4") 18030ANODA_2 (78.7")
Material	body – aluminum, cover K, KA-BIS, HS, LIGER, S – polycarbonate (PC) end cap – polypropylene

