

# STRIP LIGHT-SINGLE TUBE

## Description

These fixtures are designed with a concise approach to create a light unit that can be installed in locations with limited space. Linkable up to 8 fixtures and low-profile design allows it to be tucked away not obviously, bringing light to areas that normal bulky fixtures cannot reach. 0-10V dimmability provides a continuous strip of light.



## Performance Summary

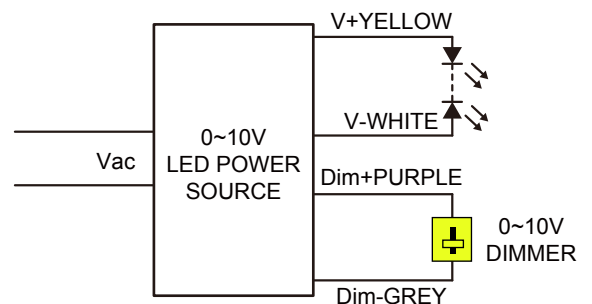
Efficacy: > 105LPW
Chip: 2835
CRI: Ra ≥ 80
CCT: 4000K
Dimmable : 0-10V
THD: < 20%
PF: > 0.9
Driver efficiency: 83%
Standard Lifetime: Designed minimum 50,000 hours
Suitable for Damp Location
Ambient Operating Range: -25°C to 45°C



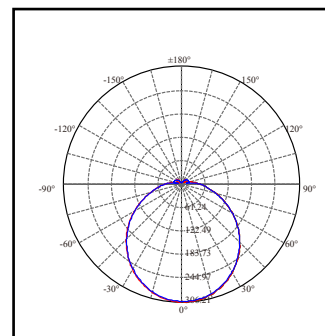
## Dimension

Model	Lenth	Width	Depth
MXL2017-LED10W/12	24.02"	2.20"	1.77"
MXL2017-LED20W/14	48.03"	2.20"	1.77"

## Wiring Diagram



## Light Distribution:



1 piece package

MXL2017-LED10W/12  
25.2"(w)×2.76"(d)×3.15"(h)



6 pieces in a box

MXL2017-LED20W/12  
25.98"(w)×9.06"(d)×7.09"(h)



MXL2017-LED20W/12  
19632 pieces in a 40HQ container  
17352 pieces in a 40GP container  
8424 pieces in a 20GP container

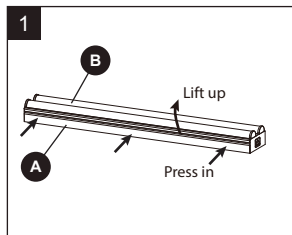
MXL2017-LED20W/14  
49.21"(w)×2.76"(d)×3.15"(h)

MXL2017-LED20W/14  
50"(w)×9.06"(d)×7.09"(h)

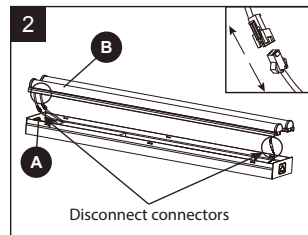
MXL2017-LED20W/14  
10212 pieces in a 40HQ container  
8988 pieces in a 40GP container  
4284 pieces in a 20GP container

## Certification and Performance Information

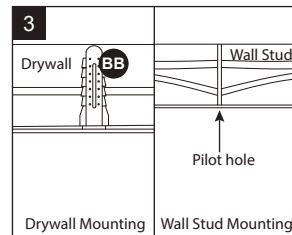
Item	Voltage(V)	Power	Lumen Output	Ra	Dim	CCT	Life time
MXL2017-LED10W/12	120-277V	10W	1050lm	≥80	0-10V	4000K	> 50,000
MXL2017-LED20W/14	120-277V	20W	2100lm	≥80	0-10V	4000K	> 50,000



1. Press the bottom frame of the fixture plate (A) inward, in the direction of the arrows, and lift the fixture lens cover (B) with the other hand in the direction indicated.



2. Lift the fixture lens cover (B) off the fixture plate (A) and unplug the connectors to release the fixture lens cover (B). Set the fixture lens cover (B) aside.

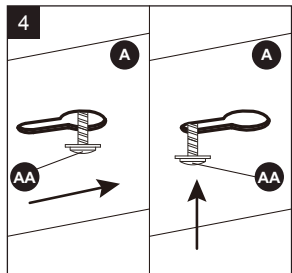


### Hardware Used

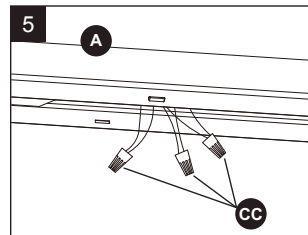
- BB Drywall Anchor x 2
- AA Wood Screw x 2

3. **DRYWALL MOUNTING:** If the mounting holes go through drywall without a stud, drill two small pilot holes using a 1/8-in. drill bit (not included), and install drywall anchors (BB) into the holes with a hammer (not included). Install the two wood screws (AA) into the mounting surface but leave about a 3/8-in. gap between the screw head and mounting surface.

**WALL STUD MOUNTING:** If the mounting holes go through wall studs, drill two small pilot holes using a 5/32-in. drill bit (not included) for the wood screws (AA). Install the two wood screws (AA) into the mounting surface but leave about a 3/8-in. gap between the screw head and mounting surface.



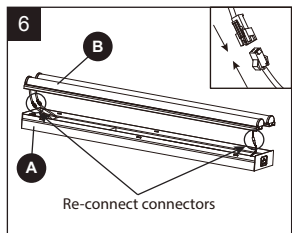
4. Align knockout hole with the supply wire location on the mounting surface and hold the fixture up in its intended location with one hand while marking the location of the two keyhole slots at each end of the fixture plate.



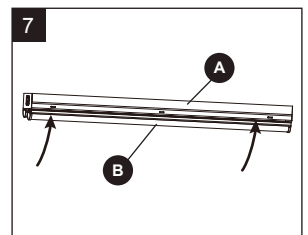
5. Connect the fixture wires to the supply wires -- black to black, white to white, and green to copper/bare.

**WARNING:** If there is no ground supply wire, stop installation and consult a qualified electrician. Once wire connections are made, secure each with a wire nut (CC).

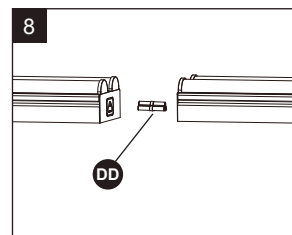
- Hardware Used
- CC Wire Nut x 3



6. Re-connect the connectors between the fixture plate (A) and fixture lens cover (B).



7. Snap the fixture lens cover (B) back onto the fixture plate (A) to complete the installation.



### Hardware Used

- DD Linking Connector x 1

8. **OPTIONAL:** If linking two or more fixtures together, power to each subsequent fixture can be made by using the linking connector (DD) where only the first fixture needs to be electrically hardwired and all linked fixtures only need to be mechanically secured to the mounting surface. **CAUTION:** The maximum number of fixtures allowed to be linked together is indicated in the following table below.