

FEATURES & SPECIFICATIONS

INTENDED USE

Provides an LED lighting platform to deliver general or task lighting for residential and light commercial applications. Light engine delivers long life and excellent color to ensure a quality, low-maintenance light installation. Ideal for use in bathrooms, lavatories, hallways, corridors, stairways, utility areas and more.

CONSTRUCTION

The Contemporary Cylinder is constructed of an acrylic diffuser with housings available in either a brushed nickel or chrome finish. The included canopy/junction box cover is removable for a more low-profile look (2'-4' lengths only). The white acrylic diffuser provides even illumination and softens the appearance of the LEDs for improved aesthetics.

OPTICS

1' produces 650 lumens, 2' produces 1300 lumens, 3' produces 1900 lumens, and 4' produces 2500 lumens at 3000K with 50,000 hours of life.

Extruded acrylic diffuser is of highly transmissive material to minimize LED image and provides high-angle brightness control.

ELECTRICAL

Long-life LEDs, coupled with a multivolt driver, provide extended service life. Standard input = 9.5 watts, (1'); 18 watts, (2'); 26 watts, (3'); 34 watts, (4'). Fixture is rated to deliver L70 performance at 50,000 hours and operates at 120-277 volts.

Use with non-dimmable switches only.

LISTINGS

UL Listed to US and Canadian safety standards. Listed for damp locations. ENERGY STAR® certified.

WARRANTY

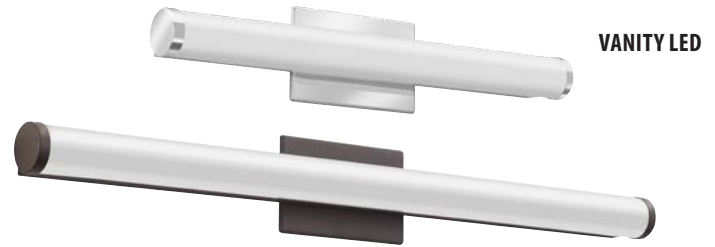
5-year limited warranty. Complete warranty terms located at www.acuitybrands.com/CustomerResources/Terms_and_conditions.aspx

NOTE: Actual performance may differ as a result of end-user environment and application. All values are design or typical values, measured under laboratory conditions at 25 °C. Specifications subject to change without notice.

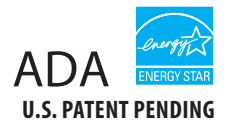
Catalog Number
Notes
Type

Decorative Indoor

Contemporary Cylinder Vanity

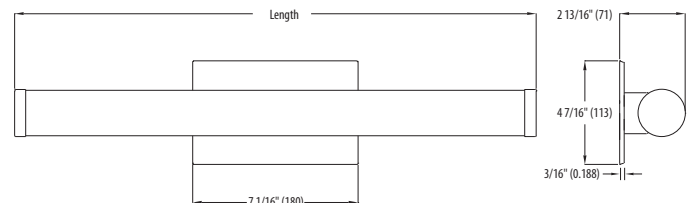


VANITY LED



SPECIFICATIONS	1FT	2FT	3FT	4FT
Length:	13-1/2 (343)	22-3/8 (568)	34-3/16 (868)	46 (1168)
Weight:	1.5 (.68)	2.1 (.95)	2.5 (1.13)	3.1 (1.41)
3000K Lumens (LPW)	710 (74)	1391 (77)	2050 (78)	2725 (80)
4000K Lumens (LPW)	749 (78)	1467 (81)	2062 (79)	2872 (84)

All dimensions are inches (millimeters) unless otherwise indicated. Weights are pounds (kilograms).



ORDERING INFORMATION

For shortest lead times, configure product using **bolded options**.

Example: FMVCL 12IN MVOLT 30K 90CRI BN

Series	Length	Voltage	Color temperature	CRI	Finish
FMVCL Contemporary Cylinder Vanity	12IN 1' Nominal 24IN 2' Nominal 36IN 3' Nominal 48IN 4' Nominal	MVOLT MVOLT (120V-277V)	40K 4000 K ¹ 35K 3500 K ² 30K 3000 K 27K 2700 K ²	90CRI >90	BN Brushed Nickel KR Chrome BZ Bronze ³

Replacement parts: Order as separate catalog number.	
DFMVCL 12IN	1' Contemporary Cylinder replacement diffuser
DFMVCL 24IN	2' Contemporary Cylinder replacement diffuser
DFMVCL 36IN	3' Contemporary Cylinder replacement diffuser
DFMVCL 48IN	4' Contemporary Cylinder replacement diffuser

Notes

- 4000K stocked in Chrome finish only, 60-day lead time on non-stock finishes; minimum 50 order quantity.
- 90-day lead time for non-standard color temperatures; minimum 50 order quantity.
- 60-day lead time for non-stock finishes; minimum 50 order quantity.

LED Vanity Contemporary Cylinder

PHOTOMETRICS

Distribution Curve

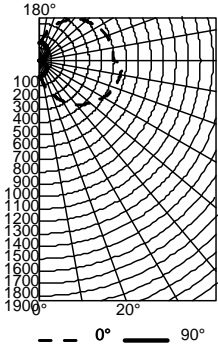
Distribution Data

Output Data

Coefficient of Utilization

Illuminance Data at 30" Above Floor for a Single Luminaire

FMVCL 48IN, 3000K LEDs, input watts: 33.8, delivered lumens: 2,725, LM/W=81, test no. LTL29646M, tested in accordance with IESNA LM 79-80.



CP Summary

	0°	90°
0°	130	130
5°	151	130
15°	239	123
25°	334	112
35°	423	99
45°	502	84
55°	568	65
65°	621	44
75°	654	22
85°	667	3
90°	599	7

Coefficients of Utilization

ROR	pw	20%			50%			10%		
		70%	50%	30%	50%	30%	10%	50%	30%	10%
0	107	107	107	99	99	99	83	83	83	
1	93	87	82	80	75	71	66	63	59	
2	83	74	66	67	60	55	56	50	46	
3	75	63	54	58	50	44	48	42	36	
4	68	55	46	50	42	36	42	35	30	
5	62	49	39	44	36	30	37	30	25	
6	57	43	34	40	31	25	33	26	21	
7	52	39	30	35	27	22	29	23	18	
8	48	35	26	32	24	19	26	20	16	
9	45	32	23	29	22	17	24	18	14	
10	42	29	21	27	19	15	22	16	12	

Zonal Lumen Summary

Zone	Lumens	% Lamp	% Fixture
0° - 30°	139	5.4	5.4
0° - 40°	260	10.2	10.2
0° - 60°	608	23.8	23.8
0° - 90°	1255	49.1	49.1
90° - 120°	662	25.9	25.9
90° - 130°	858	33.6	33.6
90° - 150°	1152	45.1	45.1
90° - 180°	1299	50.9	50.9
0° - 180°	2554	100.0	100.0

LIGHTING FACTS

Lithonia Lighting

LED lighting facts®
A Program of the U.S. DOE

Light Output (Lumens) **710**
Watts **9.09**
Lumens per Watt (Efficacy) **78.11**

Color Accuracy
Color Rendering Index (CRI) **94**

Light Color
Correlated Color Temperature (CCT) **3000 (Bright White)**

Warm White | Bright White | Daylight
2700K | 3000K | 4500K | 6500K

All results are according to IESNA LM-79-2008: Approved Method for the Electrical and Photometric Testing of Solid-State Lighting. The U.S. Department of Energy (DOE) verifies product test data and results.

Visit www.lightingfacts.com for the Label Reference Guide.

Registration Number: NJSM-P7727V (2/10/2018)
Model Number: FMVCL 12IN 30K 90CRI
Type: Luminaire - Industrial

Lithonia Lighting

LED lighting facts®
A Program of the U.S. DOE

Light Output (Lumens) **1391**
Watts **17.68**
Lumens per Watt (Efficacy) **78.68**

Color Accuracy
Color Rendering Index (CRI) **94**

Light Color
Correlated Color Temperature (CCT) **3000 (Bright White)**

Warm White | Bright White | Daylight
2700K | 3000K | 4500K | 6500K

All results are according to IESNA LM-79-2008: Approved Method for the Electrical and Photometric Testing of Solid-State Lighting. The U.S. Department of Energy (DOE) verifies product test data and results.

Visit www.lightingfacts.com for the Label Reference Guide.

Registration Number: NJSM-DN5C2I (2/10/2018)
Model Number: FMVCL 24IN 30K 90CRI
Type: Luminaire - Industrial

Lithonia Lighting

LED lighting facts®
A Program of the U.S. DOE

Light Output (Lumens) **2050**
Watts **25.27**
Lumens per Watt (Efficacy) **81.12**

Color Accuracy
Color Rendering Index (CRI) **94**

Light Color
Correlated Color Temperature (CCT) **3000 (Bright White)**

Warm White | Bright White | Daylight
2700K | 3000K | 4500K | 6500K

All results are according to IESNA LM-79-2008: Approved Method for the Electrical and Photometric Testing of Solid-State Lighting. The U.S. Department of Energy (DOE) verifies product test data and results.

Visit www.lightingfacts.com for the Label Reference Guide.

Registration Number: NJSM-PU20N8 (2/10/2016)
Model Number: FMVCL 36IN 30K 90CRI
Type: Luminaire - Industrial

Lithonia Lighting

LED lighting facts®
A Program of the U.S. DOE

Light Output (Lumens) **2710**
Watts **33.66**
Lumens per Watt (Efficacy) **80.51**

Color Accuracy
Color Rendering Index (CRI) **94**

Light Color
Correlated Color Temperature (CCT) **3000 (Bright White)**

Warm White | Bright White | Daylight
2700K | 3000K | 4500K | 6500K

All results are according to IESNA LM-79-2008: Approved Method for the Electrical and Photometric Testing of Solid-State Lighting. The U.S. Department of Energy (DOE) verifies product test data and results.

Visit www.lightingfacts.com for the Label Reference Guide.

Registration Number: NJSM-ND47E1 (2/10/2016)
Model Number: FMVCL 48IN 30K 90CRI
Type: Luminaire - Industrial