

Catalog Number
Notes
Type

FEATURES & SPECIFICATIONS

INTENDED USE

This fresh and innovative track head combines aesthetics with superior functionality for applications such as specialty retail, grocery, galleries, museums, hospitality, residential and educational environments.

CONSTRUCTION

Lamp holder: The "Spotlight" lamp holder with integral electronic driver is made of steel. Kit includes (1) 44" oil-rubbed bronze track (120V), (1) floating feed, and (3) LTIHSPLT integrated dimmable LED adjustable track heads.

Tilt: 60 degrees

Pan: 350 degrees

Adaptor: Low-profile injection-molded track mounting adaptor compatible with Lithonia Lighting track series (LTS), Cooper Lighting Halo® "H" L641 and L651 Track.

Note: Lithonia Decorative Track Lighting components are not compatible with Lithonia Commercial Track Lighting components. Installation of mixed components will result in risk of shock hazard or fire, damage of fixture, failure to illuminate, and it does not meet UL standards.

Expected life: 35,000 hours - L70 lumens depreciation design criteria.

Lumen output: 500 lumens, 40° beam angle

Color temperature (CCT): 2700 K

CRI: 80

ELECTRICAL

120 VAC 60Hz, 8.6 watts

LISTINGS

ETL_{US} listed to UL1574 Track Lighting Standard.

ENERGY STAR® certified.

Dry location.

WARRANTY

5-year limited warranty.

NOTE: Actual performance may differ as a result of end-user environment and application.

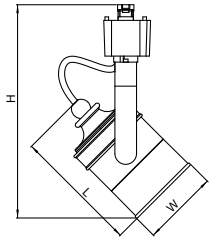
All values are design or typical values, measured under laboratory conditions at 25°C.

Specifications subject to change without notice.

Decorative Track Lighting

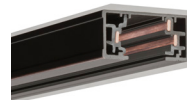
LTIKSPLT SERIES

Integrated LED Track Kit

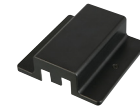


Specifications		
Width	Length	Maximum height
2-1/2	4-1/8	7

All dimensions are inches (centimeters) unless otherwise indicated.



44" oil-rubbed bronze track (120V)
(included)



LTFC - floating feed
(included)



LTIHSPLT ORB (qty 3) -
integrated dimmable LED
adjustable track heads
(included)

ORDERING INFORMATION

All configurations of this product are considered "standard" and have short lead times.

Example: LTIKSPLT LED 27K ORB

Series	LED, lumen output	Color	Finish
LTIKSPLT Integrated LED "Spotlight" track kit	LED 8.6W, 500 lumens	27K 2700 K	ORB Oil-rubbed bronze

LTIKSPLT LED Integrated Track Kit

PHOTOMETRICS

Distribution Curve

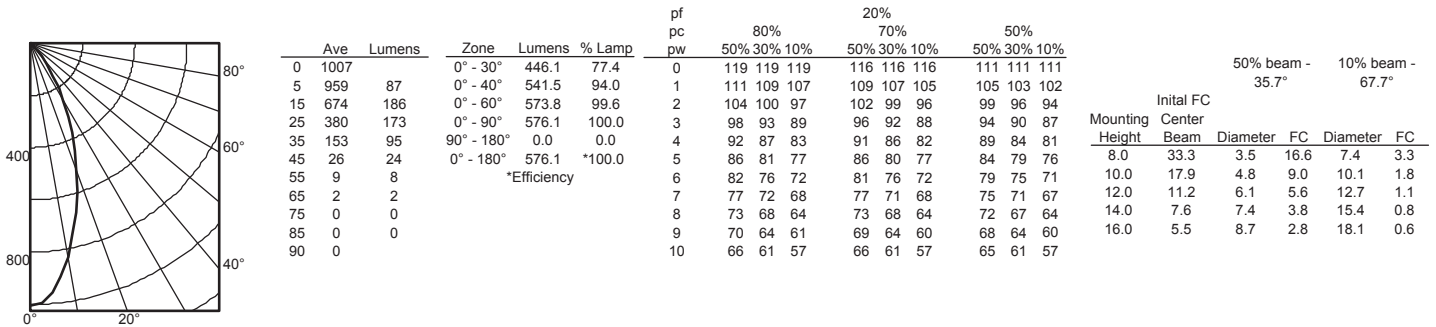
Distribution Data

Output Data

Coefficient of Utilization

Illuminance Data at 30" Above Floor for a Single Luminaire

LTIHSPLT ORB, 2700 K LEDs, input watts: 8.8, delivered lumens: 576, LM/W = 65, test no. LTL28687, tested in accordance with IESNA LM 79-80



ADDITIONAL DATA

Lithonia Lighting

Light Output (Lumens) **489**

Watts **8.64**

Lumens per Watt (Efficacy) **56.64**

Color Accuracy **80**

Color Rendering Index (CRI)

Light Color **2700 (Warm White)**

Correlated Color Temperature (CCT)

2700K 3000K 4500K 6500K

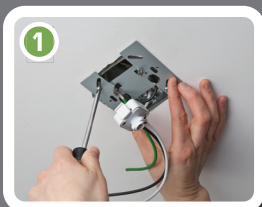
All results are according to IESNA LM-79-2008: Approved Method for the Electrical and Photometric Testing of Solid-State Lighting. The U.S. Department of Energy (DOE) verifies product test data and results.

Visit www.lightingfacts.com for the Label Reference Guide.

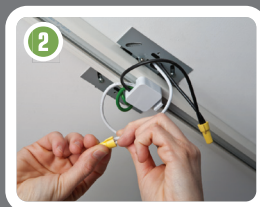
Registration Number: JB22-QG8PM4 (4/15/2015)
Model Number: LTIHSPLT 27K ORB
Type: Luminaire - Decorative

INSTALLATION INSTRUCTIONS

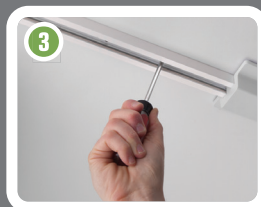
Easy to Install in 4 Steps



Install mounting plate to ceiling.



Connect track to mounting plate and wire.



Attach track to ceiling.



Simply twist heads onto track.