

FEATURES & SPECIFICATIONS

INTENDED USE

Provides an LED lighting platform to deliver general or task lighting for residential and light commercial applications. Light engine delivers long life and excellent color to ensure a quality, low-maintenance light installation. Ideal for use in bathrooms, lavatories, hallways, corridors, stairways, utility areas and more.

CONSTRUCTION

The Contemporary Square Vanity is constructed of an acrylic diffuser with housings available in either a brushed nickel, bronze, or chrome finish. The included canopy/junction box cover is removable for a more low-profile look (2'-4' lengths only). The white acrylic diffuser provides even illumination and softens the appearance of the LEDs for improved aesthetics.

OPTICS

1' produces 650 lumens, 2' produces 1300 lumens, 3' produces 1900 lumens, and 4' produces 2500 lumens at 3000K with 50,000 hours of life.

Extruded acrylic diffuser is of highly transmissive material to minimize LED image and provides high-angle brightness control.

ELECTRICAL

Long-life LEDs, coupled with a multivolt driver, provide extended service life. Standard input = 9.5 watts, (1'); 18 watts, (2'); 26 watts, (3'); 34 watts, (4'). Fixture is rated to deliver L70 performance at 50,000 hours and operates at 120-277 volts.

Use with non-dimmable switches only.

LISTINGS

UL Listed to US and Canadian safety standards. Listed for damp locations. ENERGY STAR® certified.

WARRANTY

5-year limited warranty.

NOTE: Actual performance may differ as a result of end-user environment and application.

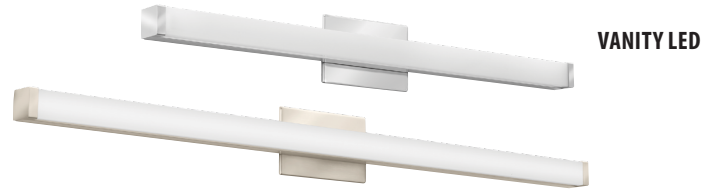
All values are design or typical values, measured under laboratory conditions at 25 °C.

Specifications subject to change without notice.

| |
|----------------|
| Catalog Number |
| Notes |
| Type |

Decorative Indoor

Contemporary Square Vanity



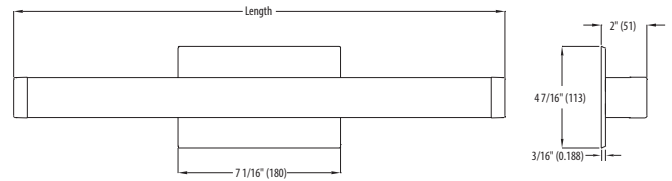
VANITY LED



ADA
U.S. PATENT PENDING

| SPECIFICATIONS | 1FT | 2FT | 3FT | 4FT |
|---------------------------|---------------|---------------|--------------|----------------|
| Length: | 12-9/16 (320) | 21-7/16 (545) | 33-1/4 (845) | 45-1/16 (1145) |
| Weight: | 1.55 (.70) | 2.15 (.98) | 2.55 (1.16) | 3.15 (1.43) |
| 3000K Lumens (LPW) | 665 (70) | 1304 (72) | 1922 (73) | 2554 (75) |
| 4000K Lumens (LPW) | 702 (73) | 1375 (76) | 2026 (77) | 2692 (79) |

All dimensions are inches (millimeters) unless otherwise indicated. Weights are pounds (kilograms).



ORDERING INFORMATION

For shortest lead times, configure product using **bolded options**.

Example: FMVCSL 24IN MVOLT 30K 90CRI BZ

| Series | Length | Voltage | Color temperature | CRI | Finish |
|--|--|--------------------------------|--|------------------|--|
| FMVCSL Contemporary Square Vanity | 12IN 1' Nominal 24IN 2' Nominal 36IN 3' Nominal 48IN 4' Nominal | MVOLT MVOLT (120V-277V) | 40K 4000 K ¹ 35K 3500 K ² 30K 3000 K 27K 2700 K ² | 90CRI >90 | BN Brushed Nickel KR Chrome BZ Bronze |

Replacement parts: Order as separate catalog number.

| | |
|---------------------|---|
| DFMVCSL 12IN | 1' Contemporary Square replacement diffuser |
| DFMVCSL 24IN | 2' Contemporary Square replacement diffuser |
| DFMVCSL 36IN | 3' Contemporary Square replacement diffuser |
| DFMVCSL 48IN | 4' Contemporary Square replacement diffuser |

Notes

- 60-day lead time for non-stock color temperatures; minimum 50 order quantity.
- 90-day lead time for non-standard color temperatures; minimum 50 order quantity.

LED Vanity Contemporary Square

PHOTOMETRICS

Distribution Curve

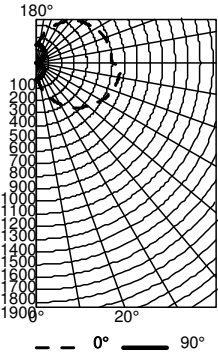
Distribution Data

Output Data

Coefficient of Utilization

Illuminance Data at 30" Above Floor for a Single Luminaire

FMVCSL 48IN, 3000K LEDs, input watts: 31.9, delivered lumens: 2,554, LM/W=80, test no. LTL29697M, tested in accordance with IESNA LM 79-80.



CP Summary

| Beam Angle | Beam Diameter (mm) | Illuminance (lx) |
|------------|--------------------|------------------|
| 0° | 130 | 130 |
| 5° | 151 | 130 |
| 15° | 239 | 123 |
| 25° | 334 | 112 |
| 35° | 423 | 99 |
| 45° | 502 | 84 |
| 55° | 568 | 65 |
| 65° | 621 | 44 |
| 75° | 654 | 22 |
| 85° | 667 | 3 |
| 90° | 599 | 7 |

Coefficients of Utilization

| RCP | pw | 20% | | | 50% | | | | |
|-----|-----|-----|-----|-----|-----|-----|-----|----|----|
| | | 70% | 50% | 30% | 70% | 50% | 30% | | |
| 0 | 107 | 107 | 107 | 99 | 99 | 99 | 83 | 83 | 83 |
| 1 | 93 | 87 | 82 | 80 | 75 | 71 | 66 | 63 | 59 |
| 2 | 83 | 74 | 66 | 67 | 60 | 55 | 56 | 50 | 46 |
| 3 | 75 | 63 | 54 | 58 | 50 | 44 | 48 | 42 | 36 |
| 4 | 68 | 55 | 46 | 50 | 42 | 36 | 42 | 35 | 30 |
| 5 | 62 | 49 | 39 | 44 | 36 | 30 | 37 | 30 | 25 |
| 6 | 57 | 43 | 34 | 40 | 31 | 25 | 33 | 26 | 21 |
| 7 | 52 | 39 | 30 | 35 | 27 | 22 | 29 | 23 | 18 |
| 8 | 48 | 35 | 26 | 32 | 24 | 19 | 26 | 20 | 16 |
| 9 | 45 | 32 | 23 | 29 | 22 | 17 | 24 | 18 | 14 |
| 10 | 42 | 29 | 21 | 27 | 19 | 15 | 22 | 16 | 12 |

Zonal Lumen Summary

| Zone | Lumens | % Lamp | % Fixture |
|------------|--------|--------|-----------|
| 0° - 30° | 139 | 5.4 | 5.4 |
| 0° - 40° | 260 | 10.2 | 10.2 |
| 0° - 60° | 608 | 23.8 | 23.8 |
| 0° - 90° | 1255 | 49.1 | 49.1 |
| 90° - 120° | 662 | 25.9 | 25.9 |
| 90° - 130° | 858 | 33.6 | 33.6 |
| 90° - 150° | 1152 | 45.1 | 45.1 |
| 90° - 180° | 1299 | 50.9 | 50.9 |
| 0° - 180° | 2554 | 100.0 | 100.0 |

LIGHTING FACTS

LED lighting facts
A Program of the U.S. DOE

Light Output (Lumens) 665
Watts 9.09
Lumens per Watt (Efficacy) 73.16

Color Accuracy
Color Rendering Index (CRI) 94

Light Color
Correlated Color Temperature (CCT) 3000 (Bright White)

Warm White | Bright White | Daylight
2700K | 3000K | 4500K | 6500K

All results are according to IESNA LM-79-2008: Approved Method for the Electrical and Photometric Testing of Solid-State Lighting. The U.S. Department of Energy (DOE) verifies product test data and results.

Visit www.lightingfacts.com for the Label Reference Guide.

Registration Number: NJSM-85UQ2P (2/10/2016)
Model Number: FMVCSL 12IN 30K 90CRI
Type: Luminaire - Industrial

LED lighting facts
A Program of the U.S. DOE

Light Output (Lumens) 1304
Watts 17.68
Lumens per Watt (Efficacy) 73.76

Color Accuracy
Color Rendering Index (CRI) 94

Light Color
Correlated Color Temperature (CCT) 3000 (Bright White)

Warm White | Bright White | Daylight
2700K | 3000K | 4500K | 6500K

All results are according to IESNA LM-79-2008: Approved Method for the Electrical and Photometric Testing of Solid-State Lighting. The U.S. Department of Energy (DOE) verifies product test data and results.

Visit www.lightingfacts.com for the Label Reference Guide.

Registration Number: NJSM-ERBP2S (2/10/2016)
Model Number: FMVCSL 24IN 30K 90CRI
Type: Luminaire - Industrial

LED lighting facts
A Program of the U.S. DOE

Light Output (Lumens) 1922
Watts 25.27
Lumens per Watt (Efficacy) 76.06

Color Accuracy
Color Rendering Index (CRI) 94

Light Color
Correlated Color Temperature (CCT) 3000 (Bright White)

Warm White | Bright White | Daylight
2700K | 3000K | 4500K | 6500K

All results are according to IESNA LM-79-2008: Approved Method for the Electrical and Photometric Testing of Solid-State Lighting. The U.S. Department of Energy (DOE) verifies product test data and results.

Visit www.lightingfacts.com for the Label Reference Guide.

Registration Number: NJSM-82IDBL (2/10/2016)
Model Number: FMVCSL 36IN 30K 90CRI
Type: Luminaire - Industrial

LED lighting facts
A Program of the U.S. DOE

Light Output (Lumens) 2512
Watts 31.92
Lumens per Watt (Efficacy) 78.7

Color Accuracy
Color Rendering Index (CRI) 93

Light Color
Correlated Color Temperature (CCT) 3000 (Bright White)

Warm White | Bright White | Daylight
2700K | 3000K | 4500K | 6500K

All results are according to IESNA LM-79-2008: Approved Method for the Electrical and Photometric Testing of Solid-State Lighting. The U.S. Department of Energy (DOE) verifies product test data and results.

Visit www.lightingfacts.com for the Label Reference Guide.

Registration Number: NJSM-PG33IA (2/10/2016)
Model Number: FMVCSL 48IN 30K 90CRI
Type: Luminaire - Industrial