

## FEATURES & SPECIFICATIONS

### INTENDED USE

Provides an LED lighting platform to deliver general or task lighting for residential and light commercial applications. Light engine delivers long life and excellent color to ensure a quality, low-maintenance light installation. Ideal for use in bathrooms, lavatories, hallways, corridors, stairways, utility areas and more.

### CONSTRUCTION

The Contemporary Cylinder is constructed of an acrylic diffuser with housings available in either a brushed nickel or chrome finish. The included canopy/junction box cover is removable for a more low-profile look (2'-4' lengths only). The white acrylic diffuser provides even illumination and softens the appearance of the LEDs for improved aesthetics.

### OPTICS

1' produces 650 lumens, 2' produces 1300 lumens, 3' produces **2050** lumens, and 4' produces 2500 lumens at 3000K with 50,000 hours of life.

Extruded acrylic diffuser is of highly transmissive material to minimize LED image and provides high-angle brightness control.

### ELECTRICAL

Long-life LEDs, coupled with a multivolt driver, provide extended service life. Standard input = 9.5 watts, (1'); 18 watts, (2'); 26 watts, (3'); 34 watts, (4'). Fixture is rated to deliver L70 performance at 50,000 hours and operates at 120-277 volts.

Use with non-dimmable switches only.

### LISTINGS

UL Listed to US and Canadian safety standards. Listed for damp locations. ENERGY STAR® certified.

### WARRANTY

5-year limited warranty.

NOTE: Actual performance may differ as a result of end-user environment and application.

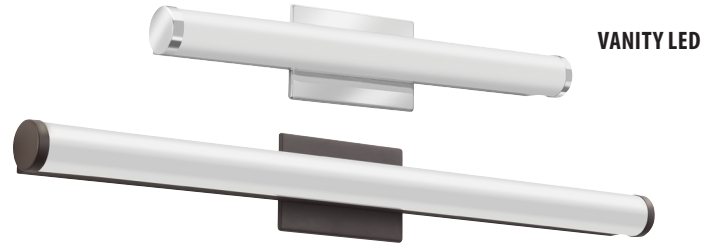
All values are design or typical values, measured under laboratory conditions at 25 °C.

Specifications subject to change without notice.

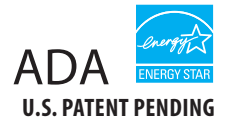
Catalog Number
Notes
Type

Decorative Indoor

# Contemporary Cylinder Vanity

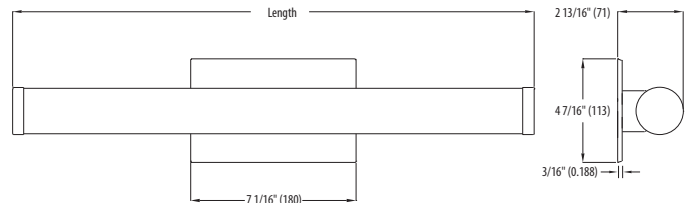


VANITY LED



SPECIFICATIONS	1FT	2FT	3FT	4FT
<b>Length:</b>	13-1/2 (343)	22-3/8 (568)	34-3/16 (868)	46 (1168)
<b>Weight:</b>	1.5 (.68)	2.1 (.95)	2.5 (1.13)	3.1 (1.41)
<b>3000K Lumens (LPW)</b>	710 (74)	1391 (77)	<b>2050 (78)</b>	2725 (80)
<b>4000K Lumens (LPW)</b>	749 (78)	1467 (81)	2062 (79)	2872 (84)

All dimensions are inches (millimeters) unless otherwise indicated. Weights are pounds (kilograms).



### ORDERING INFORMATION

For shortest lead times, configure product using **bolded options**.

**Example: FMVCL 12IN MVOLT 30K 90CRI BN**

Series	Length	Voltage	Color temperature	CRI	Finish
<b>FMVCL</b> Contemporary Cylinder Vanity	<b>12IN</b> 1' Nominal <b>24IN</b> 2' Nominal <b>36IN</b> 3' Nominal <b>48IN</b> 4' Nominal	<b>MVOLT</b> MVOLT (120V-277V)	<b>40K</b> 4000 K <sup>1</sup> 35K 3500 K <sup>2</sup> <b>30K</b> 3000 K 27K 2700 K <sup>2</sup>	<b>90CRI</b> >90	<b>BN</b> Brushed Nickel <b>KR</b> Chrome BZ Bronze <sup>3</sup>

### Replacement parts: Order as separate catalog number.

<b>DFMVCL 12IN</b>	1' Contemporary Cylinder replacement diffuser
<b>DFMVCL 24IN</b>	2' Contemporary Cylinder replacement diffuser
<b>DFMVCL 36IN</b>	3' Contemporary Cylinder replacement diffuser
<b>DFMVCL 48IN</b>	4' Contemporary Cylinder replacement diffuser

### Notes

- 4000K stocked in Chrome finish only, 60-day lead time on non-stock finishes; minimum 50 order quantity.
- 90-day lead time for non-standard color temperatures; minimum 50 order quantity.
- 60-day lead time for non-stock finishes; minimum 50 order quantity.

# LED Vanity Contemporary Cylinder

## PHOTOMETRICS

### Distribution Curve

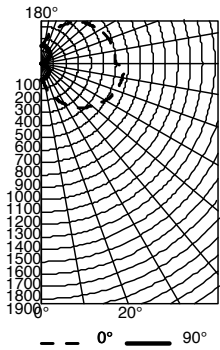
### Distribution Data

### Output Data

### Coefficient of Utilization

### Illuminance Data at 30" Above Floor for a Single Luminaire

FMVCL 48IN, 3000K LEDs, input watts: 33.8, delivered lumens: 2,725, LM/W=81, test no. LTL29646M, tested in accordance with IESNA LM 79-80.



#### CP Summary

	0°	90°
0°	130	130
5°	151	130
15°	239	123
25°	334	112
35°	423	99
45°	502	84
55°	568	65
65°	621	44
75°	654	22
85°	667	3
90°	599	7

#### Coefficients of Utilization

ROR	pf	20%						50%						
		80%		70%		50%		80%		70%		50%		
	pc	70%	50%	30%	10%	50%	30%	10%	50%	30%	10%	50%	30%	10%
0	107	107	107	99	99	99	83	83	83					
1	93	87	82	80	75	71	66	63	59					
2	83	74	66	67	60	55	56	50	46					
3	75	63	54	58	50	44	48	42	36					
4	68	55	46	50	42	36	42	35	30					
5	62	49	39	44	36	30	37	30	25					
6	57	43	34	40	31	25	33	26	21					
7	52	39	30	35	27	22	29	23	18					
8	48	35	26	32	24	19	26	20	16					
9	45	32	23	29	22	17	24	18	14					
10	42	29	21	27	19	15	22	16	12					

#### Zonal Lumen Summary

Zone	Lumens	% Lamp	% Fixture
0° - 30°	139	5.4	5.4
0° - 40°	260	10.2	10.2
0° - 60°	608	23.8	23.8
0° - 90°	1255	49.1	49.1
90° - 120°	662	25.9	25.9
90° - 130°	858	33.6	33.6
90° - 150°	1152	45.1	45.1
90° - 180°	1299	50.9	50.9
0° - 180°	2554	100.0	100.0

## LIGHTING FACTS

Lithonia Lighting

**LED lighting facts**  
A Program of the U.S. DOE

Light Output (Lumens) **710**  
Watts **9.09**  
Lumens per Watt (Efficacy) **78.11**

Color Accuracy  
Color Rendering Index (CRI) **94**

Light Color  
Correlated Color Temperature (CCT) **3000 (Bright White)**

Warm White | Bright White | Daylight  
2700K | 3000K | 4500K | 6500K

All results are according to IESNA LM-79-2008: Approved Method for the Electrical and Photometric Testing of Solid-State Lighting. The U.S. Department of Energy (DOE) verifies product test data and results.

Visit [www.lightingfacts.com](http://www.lightingfacts.com) for the Label Reference Guide.

Registration Number: NJSM-P7727V (2/10/2016)  
Model Number: FMVCL 12IN 30K 90CRI  
Type: Luminaire - Industrial

Lithonia Lighting

**LED lighting facts**  
A Program of the U.S. DOE

Light Output (Lumens) **1391**  
Watts **17.68**  
Lumens per Watt (Efficacy) **78.68**

Color Accuracy  
Color Rendering Index (CRI) **94**

Light Color  
Correlated Color Temperature (CCT) **3000 (Bright White)**

Warm White | Bright White | Daylight  
2700K | 3000K | 4500K | 6500K

All results are according to IESNA LM-79-2008: Approved Method for the Electrical and Photometric Testing of Solid-State Lighting. The U.S. Department of Energy (DOE) verifies product test data and results.

Visit [www.lightingfacts.com](http://www.lightingfacts.com) for the Label Reference Guide.

Registration Number: NJSM-DN5C21 (2/10/2016)  
Model Number: FMVCL 24IN 30K 90CRI  
Type: Luminaire - Industrial

Lithonia Lighting

**LED lighting facts**  
A Program of the U.S. DOE

Light Output (Lumens) **2050**  
Watts **25.27**  
Lumens per Watt (Efficacy) **81.12**

Color Accuracy  
Color Rendering Index (CRI) **94**

Light Color  
Correlated Color Temperature (CCT) **3000 (Bright White)**

Warm White | Bright White | Daylight  
2700K | 3000K | 4500K | 6500K

All results are according to IESNA LM-79-2008: Approved Method for the Electrical and Photometric Testing of Solid-State Lighting. The U.S. Department of Energy (DOE) verifies product test data and results.

Visit [www.lightingfacts.com](http://www.lightingfacts.com) for the Label Reference Guide.

Registration Number: NJSM-PU20N8 (2/10/2016)  
Model Number: FMVCL 36IN 30K 90CRI  
Type: Luminaire - Industrial

Lithonia Lighting

**LED lighting facts**  
A Program of the U.S. DOE

Light Output (Lumens) **2710**  
Watts **33.66**  
Lumens per Watt (Efficacy) **80.51**

Color Accuracy  
Color Rendering Index (CRI) **94**

Light Color  
Correlated Color Temperature (CCT) **3000 (Bright White)**

Warm White | Bright White | Daylight  
2700K | 3000K | 4500K | 6500K

All results are according to IESNA LM-79-2008: Approved Method for the Electrical and Photometric Testing of Solid-State Lighting. The U.S. Department of Energy (DOE) verifies product test data and results.

Visit [www.lightingfacts.com](http://www.lightingfacts.com) for the Label Reference Guide.

Registration Number: NJSM-ND47E1 (2/10/2016)  
Model Number: FMVCL 48IN 30K 90CRI  
Type: Luminaire - Industrial