

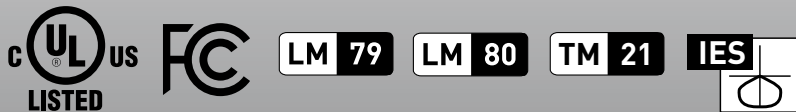
A21 17W DIM. TITANIUM LED SERIES



PRO



- Ⓞ Omnidirectional: 330° beam angle
- Ⓞ Exceptional efficacy 97 LPW in Warm White
- Ⓞ Suitable for use in totally enclosed fixtures
- Ⓞ 40% more energy savings than CFL
- Ⓞ Comfortable warm diffused light
- Ⓞ Natural A-lamp shape fits all applications



17W REPLACES



100W
Inc.

80% Energy Savings

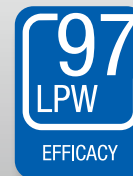
\$220 Savings
per lamp*



25,000 H



DIMMABLE



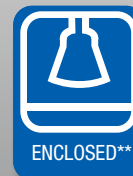
EFFICACY



WARRANTY



CRI (Ra)

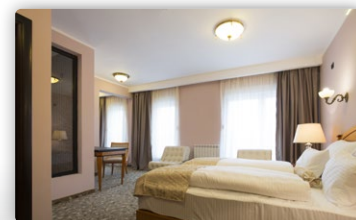


ENCLOSED**

A21 PRODUCT FEATURES

Suitable for Enclosed Fixtures

This A19 is suitable for use in totally enclosed fixtures and capable of operating in a broad range of applications. Whether it is installed in fully enclosed flushmounts or sconces, this lamp's advanced thermal design ensures optimal performance over the course of its lifetime.



Omnidirectional Lighting



This A21 emits 330° of uniform light and meets ENERGY STAR requirements. Its omnidirectional output provides a fuller distribution than other LED A-lamps.

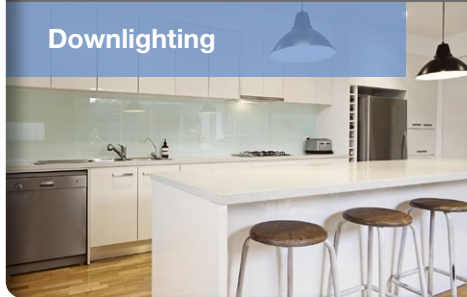
A21 17W DIM. TITANIUM LED SERIES

APPLICATIONS

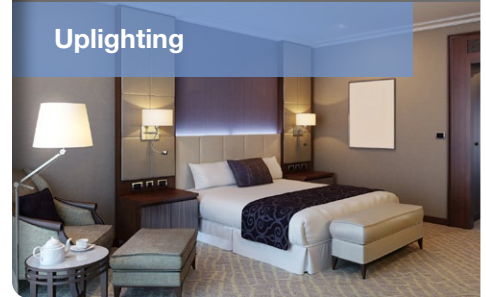
General Lighting



Downlighting



Uplighting



SPECIFICATIONS

Product Model	16179R 17A21G4DIM/827/R	16180R 17A21G4DIM/830/R	16181R 17A21G4DIM/840/R
Type	A21	A21	A21
Base	E26	E26	E26
Power (W)	17	17	17
Voltage - Frequency	120V 60Hz	120V 60Hz	120V 60Hz
Color Temp. (ANSI)	Warm White 2700K	Halogen White 3000K	Cool White 4000K
CRI (Ra) (typ.)	80	80	80
Typical lumens (lm)	1600	1650	1700
Efficacy (LPW)	94	97	100
Beam Angle	330°	330°	330°
Dimmable	Yes***	Yes***	Yes***
Power Factor	0.9	0.9	0.9
Rated Lifetime - L70 (hrs.)	25,000	25,000	25,000
Dia. x MOL	2.6"x4.96" (65x126mm)	2.6"x4.96" (65x126mm)	2.6"x4.96" (65x126mm)
Weight (lb. / g)	0.44lb. / 199g	0.44lb. / 199g	0.44lb. / 199g

* Savings per lamp based on \$0.11 / kw energy cost, 12 hrs / day lamp usage, \$2 incandescent with 1000-hr lifetime, \$24 LED with 25,000-hr lifetime

** Suitable for use in totally enclosed fixtures

*** List of tested dimmer switches available on website

**** Suitable for damp locations. Not for use where directly exposed to weather or water