

FIXT-10005

INDUSTRIAL STRIP HIGH BAY™ 4/F54

TECHNICAL DATA SHEET

FEATURES



- Maximum light output and uniform light distribution
- Energy savings alternative to standard HID fixtures
- A high performance reflector maximizes light output from four T5 fluorescent lamps.

HOUSING

22 gauge cold rolled steel. All steel surfaces are painted after fabrication with high gloss baked enamel applied over iron phosphate pre-treatment for maximum adhesion and rust resistance.

REFLECTOR

86% total reflectance, segmented optics utilizing specular aluminum.

ELECTRONICS

Electronic ballast is standard and available in numerous configurations. Sufficient knockouts are available for electrical and sensor connection.

MOUNTING

Versatile mounting options available


ACCESSORIES

Occupancy sensors, emergency back-up ballasts.

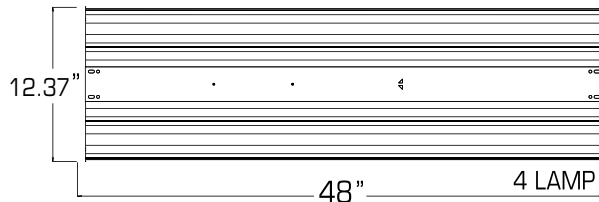
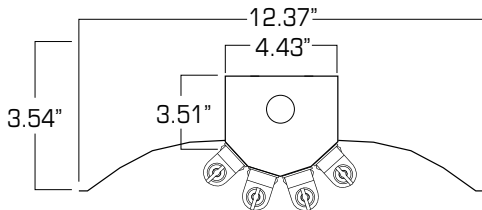
APPLICATION

Larger warehouses, retail applications, commercial buildings and work areas.

SPECIFICATIONS

| | |
|-----------------------|---|
| BALLAST BRAND | SUPERIOR LIFE® |
| Ballast Configuration | (1) 454 |
| Lamp Type | (4) F54T5 |
| Input Voltage | 120-277V |
| Construction | 22 Gauge C.R.S |
| Finish | High Gloss Baked Enamel |
| Reflector | 86% MIRO Aluminum |
| Dimension (Inches) | 48"(L) x 12.4"(W) x 3.5"(H) |
| Safety Approval |  |

DIMENSIONS



ORDERING

| ITEM# | DESCRIPTION | LAMP | NO. OF LAMPS | LUMEN PACKAGE | VOLTS | CASE |
|------------|--|------|--------------|---------------|----------|------|
| FIXT-10005 | INDUSTRIAL STRIP HIGH BAY ALUMINUM RFL 4/54-120-277V | T5 | 4 | 20,000 | 120-277V | 1 |