



DATA SHEET

PDS ZM LED extrusion – article number B7696ANODA

Product characteristics

The extrusion is made from high quality, double-anodized aluminum, designed for flexible or rigid LED strips that are 8 – 10.8mm wide. The available covers for the extrusion are: cover K, HS (frosted or clear), LIGER (frosted matte) or focusing cover- S (clear, satin), thanks to which we obtain a 10 degree light beam angle. Covers are made of polycarbonate, and additionally, HS covers are certified for excellent resistance to all weather conditions, UV radiation and are flame retardant.

Standard polypropylene end caps are used for the extrusion as supplementary accessories. End caps protect the extrusion from dust and other undesirable elements, which can make LED strips dirty and consequently deteriorate the lighting parameters.

The extrusion can be mounted to surfaces with the use of double-sided adhesive tape, mounting glue or screws which guarantee easy and secure mounting of the extrusion to a desired surface. Installation of the profile in drywall is performed using special GP mounting springs. If you would like to mount a profile in an Armstrong drop ceiling with the use of GP springs, you should additionally apply special safety washers (42712).

ZM connectors are used for straight (ZM-180) and angle connections of (in a plane parallel to the cover, at an angle of 90° and 135° - ZM-90 and ZM-135, as well as in a plane perpendicular to the cover at the angle of 90° and 135° - ZMPION-90 and ZMPION-135) KLUŚ profiles fitted with a small fastener and to stabilize the ends of the profiles mounted in lines.

Integrated, straight line of light can be achieved by assembling the extrusion, densely spaced LEDs and frosted HS (minimum 140 LED per meter) cover or frosted matte LIGER (minimum 120 LED per meter) cover. The LED fixture can also be assembled to be waterproof equal to IP67. For mounting and power supply of extrusions the elements from the mounting system presented on www.KlusDesign.com can be used.

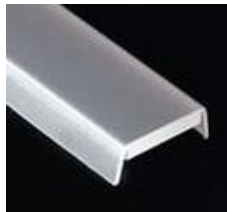
Applications

The extrusion with LED light source is mostly used as interior lighting, especially to light cabinets, stairs, glass-cases, or as a decorative light for a niche in drywall ceilings. The IP67 version can be also used as outdoor lighting for elevations or architectural elements of gardens.

Products related to the Extrusion



cover type K
frosted (1547)
clear (1548)
cover type LIGER
frosted matte (17031)



cover type HS
frosted (1369)
clear (1370)



cover type S
satin (17111)



end cap PDS-ZM
24145



spring GP (00293)





DATA SHEET

PDS ZM LED extrusion – article number B7696ANODA

Technical specification

Ingress Protection Rating	IP 20 (standard), IP 67 (optional)
Product Number	B7696ANODA_1 (39.4") B7696ANODA_2 (78.7")
Material	extrusion– aluminum, cover K, HS – polycarbonate (PC) end cap – polypropylene (PP), spring – steel