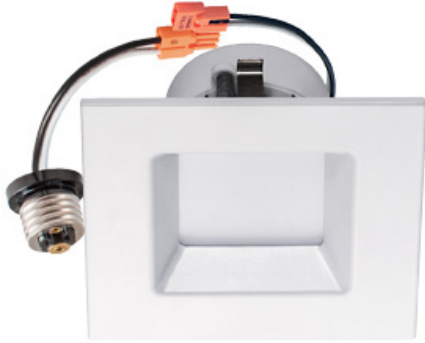


90919

LED 10W 4" SQUARE RETROFIT CAN

TECHNICAL DATA SHEET

FEATURES



- Energy efficient: save up to 80% in energy costs
- High lumen output
- Lamp body is aluminum alloy; anti-corrosion, rust free.
- Anti-high temperature silicone rubber
- Instant-On
- Dimmer range is 10% ~ 100%
- For covered ceilings only
- Dry and damp locations

APPLICATION

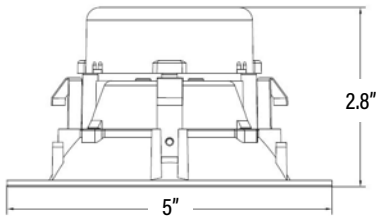
Retrofits are ideal for retrofitting inefficient fixtures in malls, hospitals, airports, offices, lobbies and other commercial applications.

SPECIFICATIONS

Power Consumption	10W
Input Voltage	120V
Power Factor	0.95
Lumens	610
Luminous Efficiency	61 / 65 Lm/W
Color Temperature	3000K
CRI	80
Base	Medium
Housing	Aluminum Alloy
Finish	White
Dimensions (Inches)	5.0"(DIA) x 2.8"(H)
LIFESPAN & ENVIRONMENT	
Average Life	50,000
Operating Temperature	-40°C ~ 40°C



DIMENSIONS



DIMMER COMPATABILITY

LUTRON	LEVITON
MIR-600THW-WH	VP106 600W
MACL-153M-WH	IPL06
S-600PR-WH	6631
SPSLV-600-WH	6633-P
DVLV-603P-IV	IPS02
MALV-600-IV	66T2
SCL-153PR-WH	6683
SLV-600P-WH	6674
CTCL-153PDH-WH	
4X603	

NOT recommended with following LUTRON models:

DVW-603P6H-WH · CT-603PH-WH

CTELV-303PR-WH · DVCL-153P-WH

ORDERING

ITEM#	DESCRIPTION	WATTS	COLOR	LUMENS	VOLT	BASE	HOURS	CASE
90919	LED RETROFIT 4" SQ CAN 10W/30K/MED/DIMMABLE V4 - SL° ES	10	3000K	610	120V	MEDIUM	50,000	12