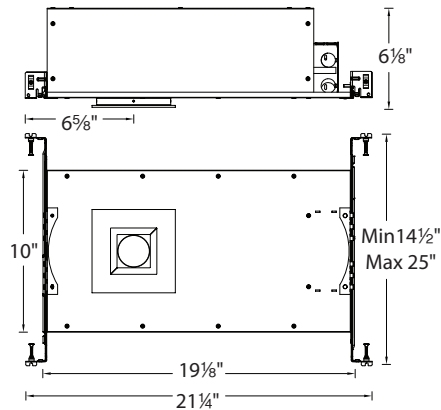
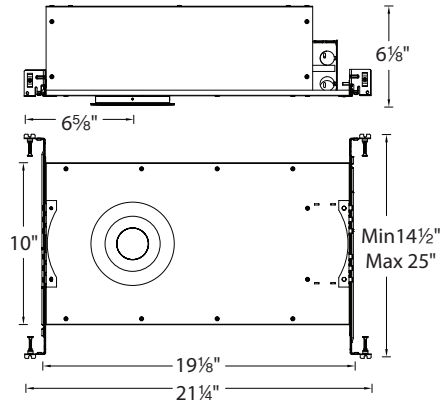


# SUMMIT 2.0 3.5" AC-LED HR3S-IC

## 120V - IC-Rated, Airtight

WAC LIGHTING  
Responsible Lighting®



### SPECIFICATIONS

**Comparable:** 50W MR16

**Input:** 120VAC 50/60HZ

**Rated Life:** Reported Life > 36,000 hrs\*

Calculated Life = 50,000 hrs\*

\*Based on IES Tm21 Report

**Construction:** Die-cast trim Painted White.  
Frame and hanger bars are heavy gauge galvanized steel.

**J-Box:** Seven knockouts. Rated for through branch wiring.  
Wire connectors provides for ease of installation.

**Driver:** Uses AC-LED, no driver needed

**Mounting:** Supplied with hanger bars, adjustable from 14 1/2"-25"  
to accommodate various joist construction and grid sizes. Hanger  
bars include a captive mounting "screw-nail" for ease of installation.  
Accommodates surfaces from 1/2"- 3/4" thick.  
4 5/8" cutout hole.

**Dimming:** 100%-10% ELV Dimming

**Compatible Dimmer:** DVELV-300P, SELV-300P, RRD-6NA

**Rating:** IC-Rated

**Standards:** Energy Star®, ETL & cETL Listed for Wet Locations.

### PRODUCT DESCRIPTION

3.5" AC-LED integral trim and housing

### FEATURES

- Energy Star®
- Title 24 Compliant
- Wet Location Listed
- Frosted lens for glare control and optimal light distribution
- Includes housing and Trim
- Driver-free, 120V line voltage input
- Ceiling thickness: 1/2" - 3/4"

### ORDER NUMBER

Model #	Power	Beam Angle	Color Temp	CRI	Lumen
<b>HR3S-ICR30F-WT</b> Round IC-Rated, Airtight New Construction	14.5W	45°	3000K	90	910
<b>HR3S-ICS30F-WT</b> Square IC-Rated, Airtight New Construction	14.5W	45°	3000K	90	895

**HR3S-IC\_\_30F-WT**

### PHOTOMETRY

