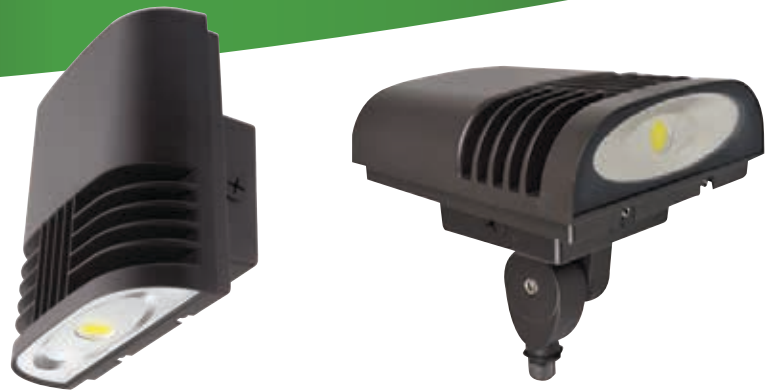




## Value and versatility defined

Three lumen packages to replace up to 250W metal halide while saving up to 87% in energy costs, the OLWX1 combines multiple mounting options with the latest generation of LEDs. Ideal for commercial and residential wall and floodlight applications.



OLWX1 replaces up to **250W MH**



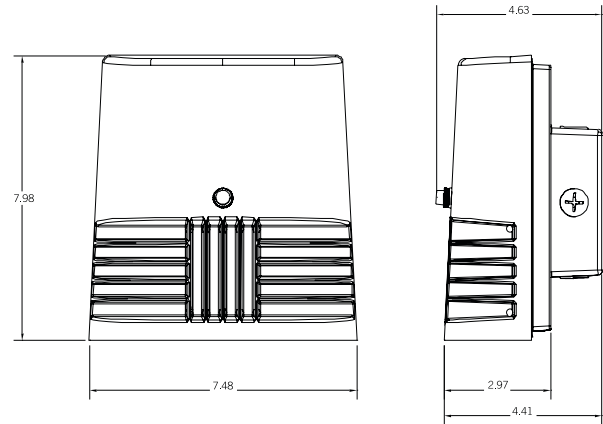
# Value and versatility defined

## Features

- Compact, ADA compliant\*
- Simple, secure installation
- Junction box (included) for conduit through-wiring
- Mounting plate (included) for mounting to 4" recessed junction box
- Downlight or uplight
- Flood mounting accessories (order separately)
- Superior protection against the elements (IP65)
- Minimum starting temperature -40°F

\* When installed using included mounting bracket.

## Product Dimensions



## Wall Mounting Options



Wiring Box for conduit

Mounting Plate

Inverted

## Flood Mounting Options



\*\*Yoke

\*\*Slipfitter

\*\*Knuckle

\*\*Top Visor & Vandal Guard

\*\* Flood mounting accessories sold separately. Top Visor and Vandal Guard included with purchase of any flood mount accessory.

## COMPARISON AND REPLACEMENT CHART

Model #	Replaces up to (MH)	Lumens	Input Wattage	Efficacy	Energy Savings
OLWX1 13W	70W	1,289	14	92 LPW	83%
OLWX1 20W	150W	1,854	22	84 LPW	88%
OLWX1 40W	250W	4,079	37	111 LPW	87%

## ORDERING INFORMATION

Example: OLWX1 LED 20W 50K

### OLWX1 LED

Series	LED Wattage	Color Temperature	Voltage	Control Options	Finish
OLWX1 LED	13W 13 Watts	40K 4000K <sup>1</sup>	(blank) MVOLT <sup>2</sup>	(blank) none	(blank) Dark Bronze
	20W 20 Watts	50K 5000K	120 120V <sup>3</sup>	PE 120V Button Photocell <sup>1,3</sup>	
	40W 40 Watts		347 347V		



Flood Light Accessories:	OLWX1TS	Slipfitter - size 1
	OLWX1YK	Yoke - size 1
	OLWX1THK	Knuckle - size 1

### Notes

- 1 Not available with 347V option
- 2 MVOLT driver operates on any line voltage from 120-277V (50/60Hz)
- 3 Specify 120V when ordering with photocell (PE option)

