

DATA SHEET

TES-16 KPL. Extrusion – article number 18022

Product characteristics

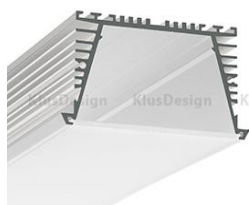
Technical extrusion designed for making precise grooves in the surfaces of drywall and drywall ceilings. Its unique construction allows the mounting of the SEKOMA extrusion which can be achieved with the use of BLOCK springs (include 2 pairs of springs per 1 m of the extrusion). The BLOCK springs are put into special grooves in the TES-16 extrusion. The SEKOMA extrusion is then mounted by snapping it into the TES-16 extrusion.

Additional accessories for the TES-16 mounting base are polypropylene end caps. The TES-16 extrusion is mounted by screwing the collars of the extrusion to the beam structures of walls and ceilings. The distance of the collar from the upper edge is equal to the thickness of 15,9 mm drywall.

Applications

Technical extrusion that enables the recessed mounting of the SEKOMA extrusion.

Products related to the Extrusion



extrusion SEKOMA (B6595)



end cap TESE (24047)



spring BLOK (42731)

Technical specification

Available lengths	1 m / 2 m / 3 m* (can be cut to any size)
	*available by arrangement with the sales department of KLUŚ
Material	body – aluminum, end cap – polypropylene (PP), spring – steel

