

## FEATURES & SPECIFICATIONS

**INTENDED USE** — The industry's next generation in linear direct fluorescent products. This new compact, low-profile design offers our customers unique product features which improve the overall installation process and appearance while reducing labor cost, making it the most versatile solution for commercial, retail, manufacturing, warehouse, and cove and display applications.

**CONSTRUCTION** — Compact designed channel and cover are formed from code-gauge cold-rolled steel. Innovative T8 two-lamp back plate offers compact design and additional socket protection. Locking lamp holder tracks bolsters strength of the overall strip construction while creating improved lamp stability. Design includes T8 socket, features rotating collar and enclosed contacts. Improved easy "snap n' lock" end plates allow for quick attachment.

Designed to accommodate a wide variety of T8 lamp lengths. Channel offers the gripper back feature which strengthens the overall construction and allows for the use of the new Z spring hanger (see back). Newly designed, patent-pending channel cover offers a secure fit design, allowing for easy access and quick attachment without pinching wires.

Finish: High-gloss, baked white enamel finish (white standard). Five-stage iron-phosphate pretreatment ensures superior paint adhesion and rust resistance. Other channel paint finish options: black (MB), smoke gray (SMG) and galvanized (GALV).

**OPTICS** — Reflector options include solid or apertured designs in both symmetric and asymmetric configurations. Consult factory for special-apertured versions.

**ELECTRICAL** — Thermally protected, resetting, Class P, HPF, non-PCB, UL listed. Suitable for damp locations. AWN, TFN or THHN wire used throughout, rated for required temperatures.

**INSTALLATION** — Patented-pending "three-point" row connector locks channel together for straighter and faster row mounting; included as standard. Ideal for surface-mount or suspended.

**LISTINGS** — UL Listed, CUL Listed or CSA Certified to Canadian Standards. Listed for 25° C ambient temperature.

**WARRANTY** — 1-year limited warranty. Complete warranty terms located at [www.acuitybrands.com/CustomerResources/Terms\\_and\\_conditions.aspx](http://www.acuitybrands.com/CustomerResources/Terms_and_conditions.aspx)

Actual performance may differ as a result of end-user environment and application.

Note: Specifications subject to change without notice.

Catalog Number
Notes
Type



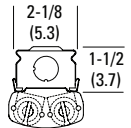
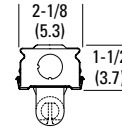
Low-Profile T5/T8 Striplight



Linear Lamps  
1 or 2 Lamps

### Specifications

T8 Length:	24 (61.0), 36 (91.4), 48 (121.9) 72 (182.9) or 96 (243.8)
T5 Length:	22-3/8 (56.8), 34-1/8 (86.7), 46 (116.8) 68-3/8 (173.6) or 92 (233.6)
Width:	2-1/8 (5.4)
Depth:	1-1/2 (3.8)



All dimensions are inches (centimeters) unless otherwise noted.

### ORDERING INFORMATION

For shortest lead times, configure products using **standard options (shown in bold)**.

**Example: Z 1 32 MVOLT GEB10IS**

Series	Reflectors	Number of lamps	Lamp type	Voltage	Ballast	Options	
<b>Z</b> Compact strip For tandem double-length unit, add prefix T. Example: TZ	(see page 3 for ordering nomenclature)	<b>1</b>	17 17W T8 (24")	120	<b>GEB10IS</b> T8 electronic ballast, ≤10% THD, instant start (T8 only) <b>MVOLT</b> GEB10RS T8 electronic ballast, ≤10% THD, rapid start <sup>1</sup> GEB10PS Electronic ballast, ≤10% THD, programmed start BILP High-efficiency .78 bf (low)	GLR Internal fast-blow fuse (add X for external) <sup>2</sup> GMF Internal slow-blow fuse (add X for external) <sup>2</sup> PLR Plug in wiring, specify number of branch circuits and hot wires (A-Black, B-Red, C-Blue, AB or AC) EL55 Emergency battery pack (nominal 390-700 lumens); consult factory for additional battery packs <sup>2,3,4</sup> EL65 Emergency battery pack (nominal 725-1325 lumens) <sup>2,3,4</sup>	
			25 25W T8 (36")	277			
		Not included	32 32W T8 (48")	347			TILW Tandem in-line wiring CSA CSA Certified NOM NOM Certified MSI Aisle motion sensor <sup>2,3</sup> MSI360 360° motion sensor <sup>2,3</sup> MSE360LBZ 360° motion sensor; for mounting within row or at end of row <sup>2,3,4</sup>
			14T5 14W T5 (22")				
			21T5 21W T5 (34")				
			24T5HO 24W T5 HO (22")				
			28T5 28W T5 (46")				
			39T5HO 39W T5 HO (34")				
			54T5HO 54W T5 HO (46")				

### Accessories: Order as separate catalog number.

SQ_	Swivel-stem hanger (specify length in 2" increments)
ZSPRG	Tong and T-grid hanger (for 15/16" T-grid)
HC36	Hanger chain, 36"
ZACVH	Adjustable aircraft cable with hook
WGZ48	48" wireguard, white <sup>5</sup>
WGZ8SMR48	48" wireguard, white, for symmetric reflector <sup>5</sup>
WGZ8ASR48	48" wireguard, white, for asymmetric reflector <sup>5</sup>
WGZ46	46" wireguard, white <sup>5</sup>
WGZ5SMR46	46" wireguard, white, for symmetric reflector <sup>5</sup>
WGZ5ASR46	46" wireguard, white, for asymmetric reflector <sup>5</sup>

### Field Installable Reflectors

For T8 fixtures only		For T5 fixtures only	
Z8SMR48	Symmetric reflector, 48" white <sup>5</sup>	Z5SMR46	Symmetric reflector, 46" white <sup>5</sup>
Z8ASR48	Asymmetric reflector, 48" white <sup>5</sup>	Z5ASR46	Asymmetric reflector, 46" white <sup>5</sup>
Z8SMR36	Symmetric reflector, 36" white <sup>5</sup>	Z5SMR34	Symmetric reflector, 34" white <sup>5</sup>
Z8ASR36	Asymmetric reflector, 36" white <sup>5</sup>	Z5ASR34	Asymmetric reflector, 34" white <sup>5</sup>
Z8SMR24	Symmetric reflector, 24" white	Z5SMR22	Symmetric reflector, 22" white
Z8ASR24	Asymmetric reflector, 24" white	Z5ASR22	Asymmetric reflector, 22" white

<b>Notes</b>	3 Not available with CSA Certified.
1 For 347V.	4 Available with 4' and 8' lengths only.
2 Specify voltage (available 120/277V).	5 Order two for tandem double length fixtures.

# Z T8 / T5 Striplight

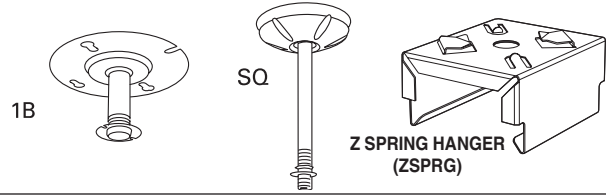
## MOUNTING DATA

For unit or row installation, surface or stem mounting.

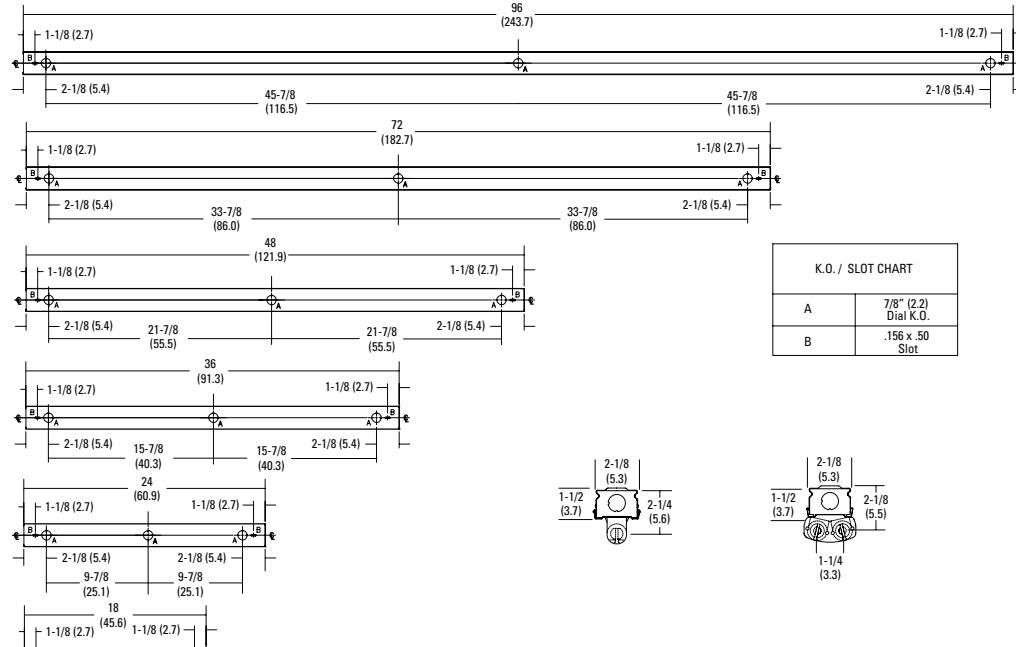
Unit installation — Minimum of two hangers required.

Row installation — One hanger per channel plus one per row required.

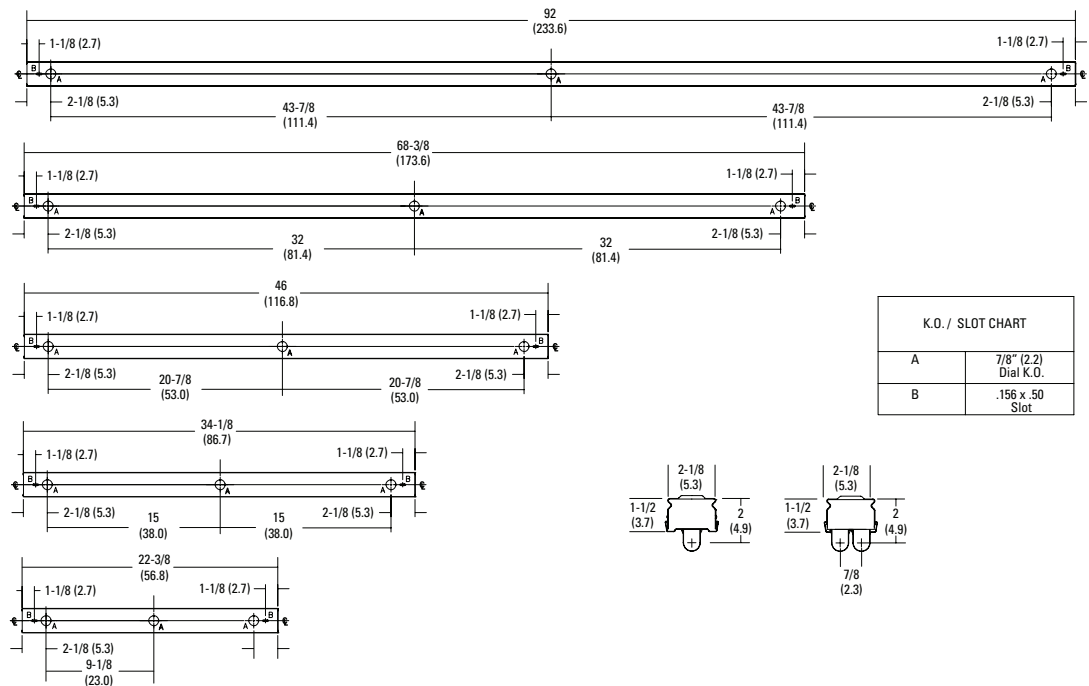
Review local codes when installing any product, as the minimum of 1 hanger per fixture may not satisfy your local building code.



## T8 DIMENSIONS



## T5 DIMENSIONS

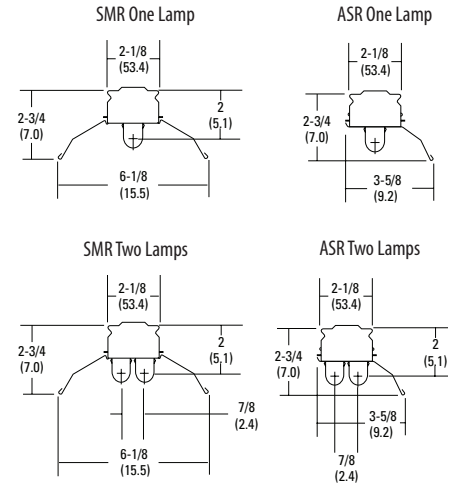
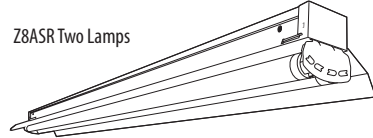
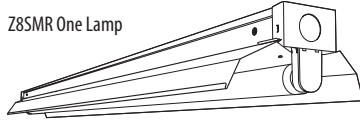
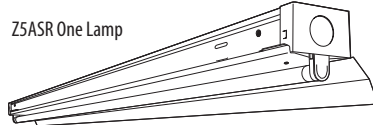
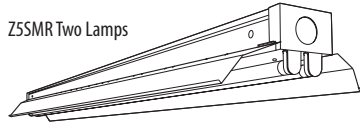


## PHOTOMETRICS

See [www.lithonia.com](http://www.lithonia.com).

# Z T8 / T5 Striplight

## REFLECTORS



### Specifications

All dimensions are inches (centimeters)

### ORDERING INFORMATION

For shortest lead times, configure products using **bolded options**.

**Example: Z5SMR46A8**

Series/Length/Distribution			Finish
<b>Series</b>	<b>Length</b>	<b>Distribution</b>	<b>(blank)</b> White
<b>Z5ASR</b> Asymmetric reflector, T5	<u>Z5ASR/Z5SMR only</u>	<b>(blank)</b> Solid	MB Matte black
<b>Z5SMR</b> Symmetric reflector, T5	22 Nominal 22" length	A2 ASR with 2% uplight	GALV Galvanized
<b>Z8ASR</b> Asymmetric reflector, T8	34 Nominal 34" length	<b>A4</b> ASR with 4% uplight	SKGY Smoke gray
<b>Z8SMR</b> Symmetric reflector, T8	<b>46</b> Nominal 46" length	A5 SMR with 5% uplight	<b>SSR</b> Specular finish aluminum (95% reflectance)
	<u>Z8ASR/Z8SMR only</u>	<b>A8</b> SMR with 8% uplight	
	24 Nominal 24" length	P Perforated	
	36 Nominal 36" length		
	<b>48</b> Nominal 48" length		